

Title:	TB Third-Party Integration – Enabling ONVIF	Version:	v5.5.0+	Date:	12/5/17
Product:	IP Cameras			Page:	1 of 5
Action Required:	Firmware upgrade is recommended.				

Summary

ONVIF protocol has been disabled by default in IP camera firmware versions since v5.5.0. Disabling the ONVIF protocol by default ensures a more secure installation and promotes cybersecurity best practices. It is a cybersecurity best practice to disable all services that are not being used because it reduces the attack surface of the device. Disabling services by default means that the end user can turn on only the services that are needed. Attackers focus on default settings because many end users do not remember to change them. This document explains how to enable ONVIF protocol in these cameras.

NOTE: Cameras updated to firmware v5.5.0 from older versions will have ONVIF disabled by default.

Enabling ONVIF Protocol

■ Using the Web Interface

1. Open a Web browser.
2. Access your camera by using its IP address.
3. Go to CONFIGURATION > NETWORK > ADVANCED SETTINGS > INTEGRATION PROTOCOL.
4. Check the **Enable ONVIF** checkbox.
5. Click the **Add** button to display the Add User window.

NOTE: The maximum number of users is 32.

6. Input a user name into the **User Name** field.
7. Input a password into the **Password** field.
8. Re-input the password in the **Confirm** field.
9. Check the appropriate user level radio button in the **Level** section:
 - **Media User** – Access to the following items:
 - Real-time streaming
 - Device supported functions (Read Only)

Title:	TB Third-Party Integration – Enabling ONVIF	Version:	v5.5.0+	Date:	12/5/17
Product:	IP Cameras			Page:	2 of 5
Action Required:	Firmware upgrade is recommended.				

- Device configuration settings (Read Only): Profile, DNS, Network interface, Endpoint reference, Recordings, Serial port, etc.

Title:	TB Third-Party Integration – Enabling ONVIF	Version:	v5.5.0+	Date:	12/5/17
Product:	IP Cameras	Page:	3 of 5		
Action Required:	Firmware upgrade is recommended.				

- **Operator** – Access to all settings except for the following:
 - Changes to the system configuration such as setting network default gateway
 - Unrecoverable changes to the system such as setting system factory default and upgrading system
 - Reading confidential system configuration information such as the system log
- **Administrator** – Unrestricted access to all settings.

10. Click **OK**.

NOTE: The ONVIF user management system is independent from the device management system.

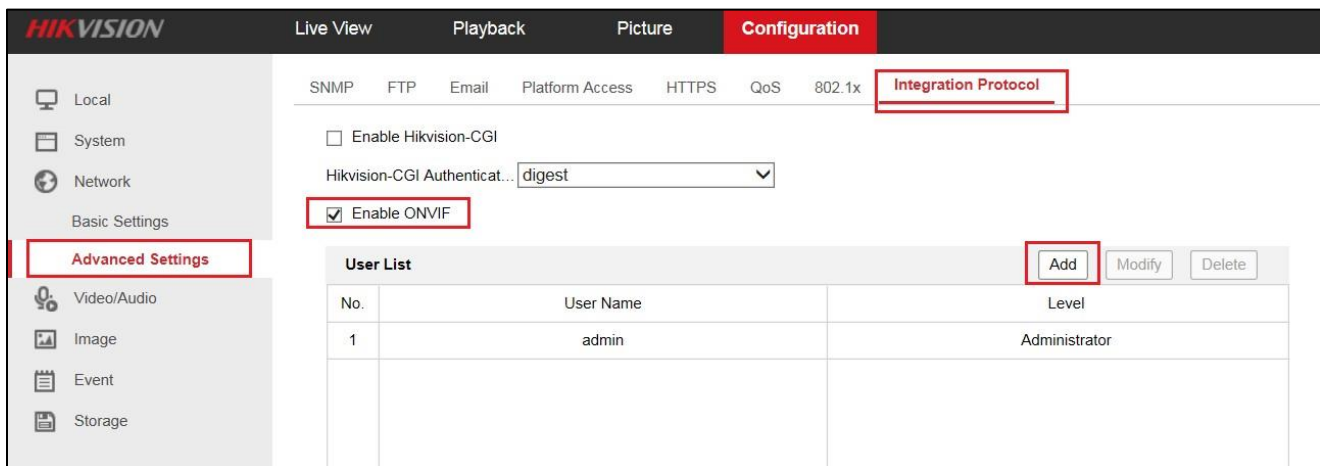


Figure 1, Integration Protocol Page

Title:	TB Third-Party Integration – Enabling ONVIF	Version:	v5.5.0+	Date:	12/5/17
Product:	IP Cameras	Page:	4 of 5		
Action Required:	Firmware upgrade is recommended.				

Figure 2, Add User

■ Using the Batch Configuration Tool Client 2.0.0.6

NOTE: The BatchConfigTool supports batch ONVIF protocol settings.

1. Download the **Batch Configuration Tool** from the following link:
http://www.hikvision.com/us/Tools_82.html
2. Run the BatchConfigTool.
3. Check the checkboxes to the left of the online devices for which to enable ONVIF.
4. Click **+Add** to add the selected online devices to the client.

Title:	TB Third-Party Integration – Enabling ONVIF	Version:	v5.5.0+	Date:	12/5/17
Product:	IP Cameras	Page:	5 of 5		
Action Required:	Firmware upgrade is recommended.				

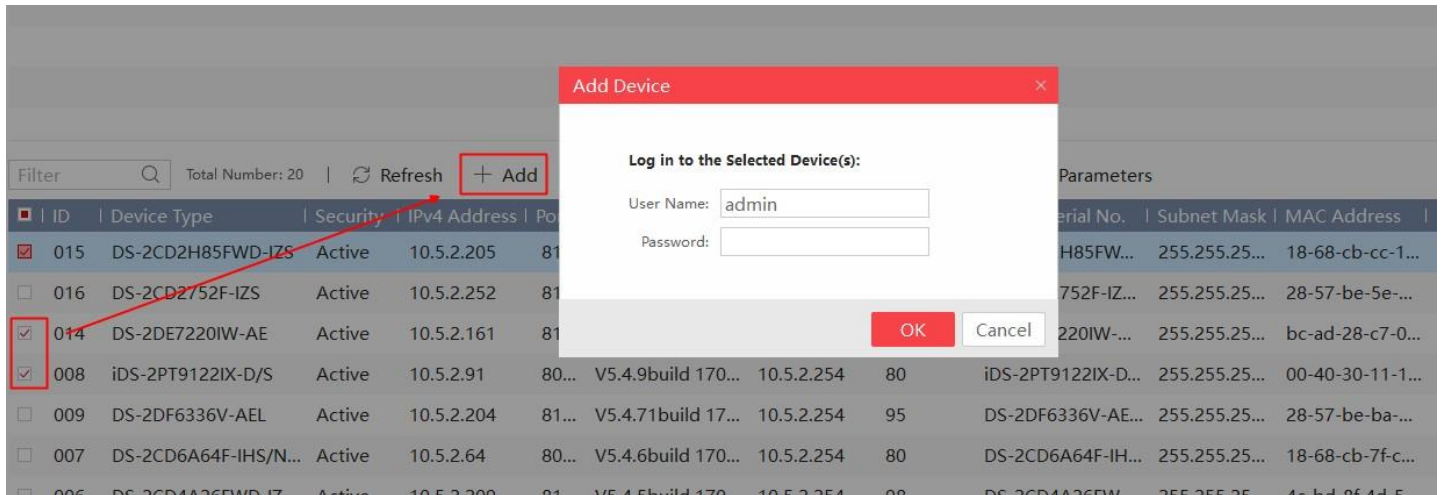


Figure 3. Add Device

5. Input the devices' user name in the **User Name** field.
6. Input the devices' password in the **Password** field.
7. Click **OK** to add the devices to the list at the top of the page.
8. Check the checkboxes to the left of the devices added to the client.
9. Click the **More** pulldown list and select **ONVIF configuration** to display the ONVIF Configuration interface.
10. On the ONVIF configuration interface, check the **Enable ONVIF** checkbox.
11. Check the **Add a User** checkbox.
12. Click the appropriate **User Type** radio button.
 - **Media User** – Has access to the following items:
 - Real-time streaming
 - Device supported functions (Read Only)
 - Device configuration settings (Read Only): Profile, DNS, Network interface, Endpoint reference, Recordings, Serial port, etc.

Title:	TB Third-Party Integration – Enabling ONVIF	Version:	v5.5.0+	Date:	12/5/17
Product:	IP Cameras	Page:	6 of 5		
Action Required:	Firmware upgrade is recommended.				

Title:	TB Third-Party Integration – Enabling ONVIF	Version:	v5.5.0+	Date:	12/5/17
Product:	IP Cameras	Page:	7 of 5		
Action Required:	Firmware upgrade is recommended.				

- **Operator** – Has access to all settings except for the following:
 - Changes to the system configuration such as setting network default gateway
 - Unrecoverable changes to the system such as setting system factory default and upgrading system
 - Reading confidential system configuration information such as the system log
- **Administrator** – Has unrestricted access to all settings.

13. Input a user name into the **User Name** field.

14. Input a password into the **New Password** field.

15. Re-input the password into the **Confirm Password** field.

16. Click **OK**.

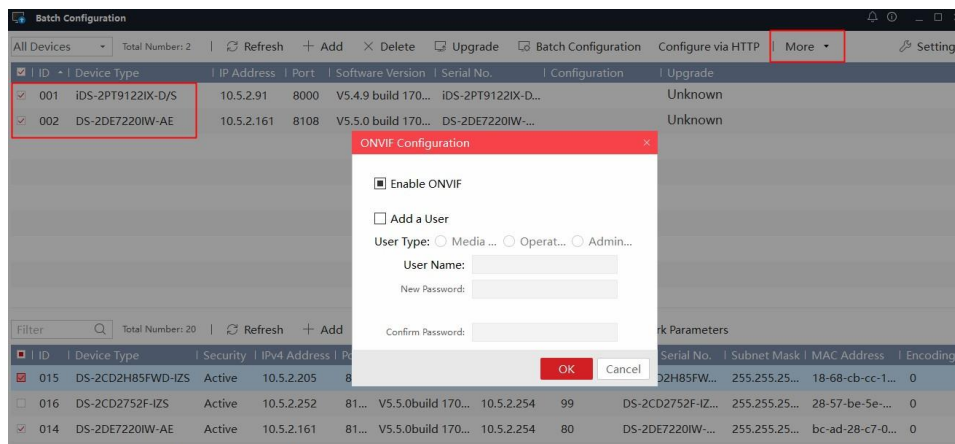


Figure 4. ONVIF Configuration