

Title:	How to configure ONVIF Protocol	Version:	v1.0	Date:	11/3/2017
Product:	IPC	Page:	1 of 5		

Background Introduction

HIKVISION released a new firmware **v5.5.0** for all the IP cameras in Sep, 2017. If you upgrade your camera with this firmware or higher version, the **ONVIF** function would be **DISABLED** as default. If you has enabled this function before, it would be turned into **DISABLED** as well after the upgrade.

This is a guide to instruct you how to enable ONVIF protocol in your camera (one device at a time) as well as in batch configuration tool (many devices at a time).

Influenced Devices

All HIKVISION IP cameras with firmware version v5.5.0 or higher.

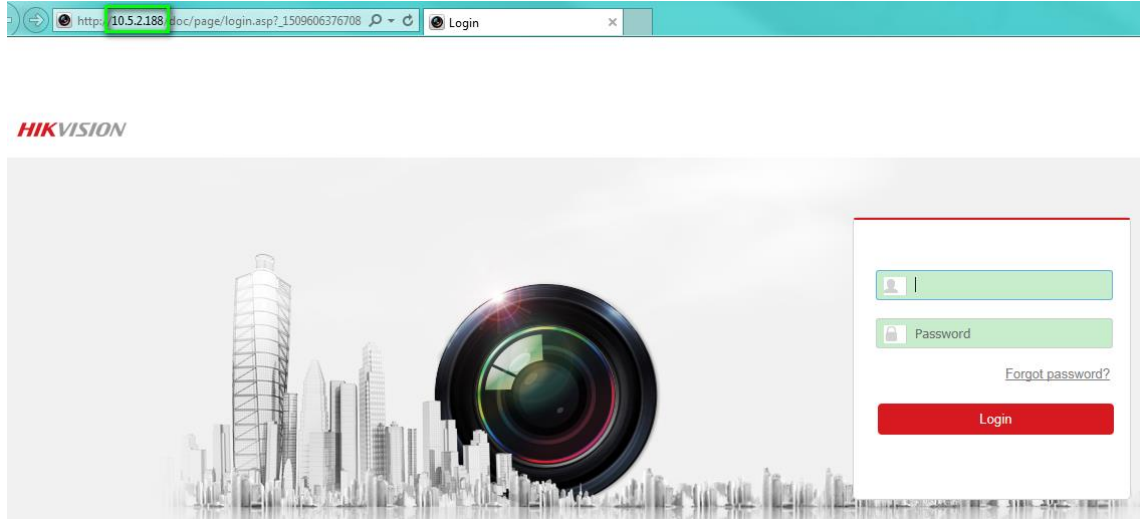
Discretion

User interface may not be identical to the instructions shown below depending on the product and firmware version. However, the information and settings required to enable ONVIF function is similar across all supporting products.

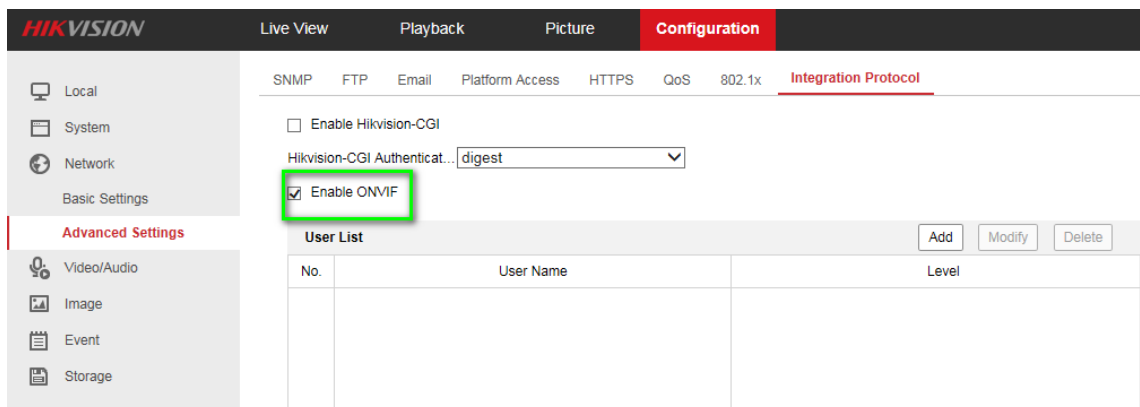
How to enable ONVIF in IPC

Configuration Steps

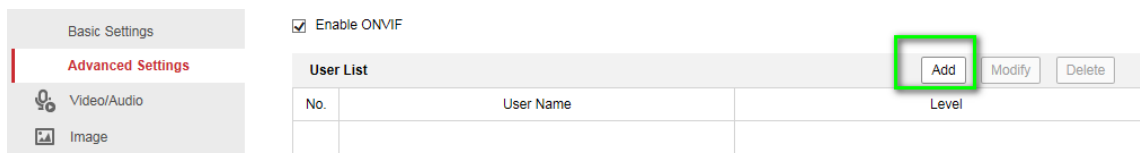
- (1) Go to device login interface by inputting device IP in web browser from PC;



- (2) Input device **administrator** login name and password to login;
- (3) Go to **Configuration->Network->Advanced Settings->Integration Protocol**;
- (4) Click **Enable ONVIF** checkbox to enable this function ;



- (5) Click **Add** to add new users (up to 32 per device), which **Media** user, **Operator** user and **Administrator** user is selectable.



Add user ✕

User Name

Password

Valid password range [8-16]. You can use a combination of numbers, lowercase, uppercase and special character for your password with at least two kinds of them contained.

Confirm

Level

Media user

Operator

Administrator



- Basic Settings
- Advanced Settings
- Video/Audio
- Image

Enable ONVIF

User List			Add	Modify	Delete
No.	User Name	Level			
1	admin	Administrator			

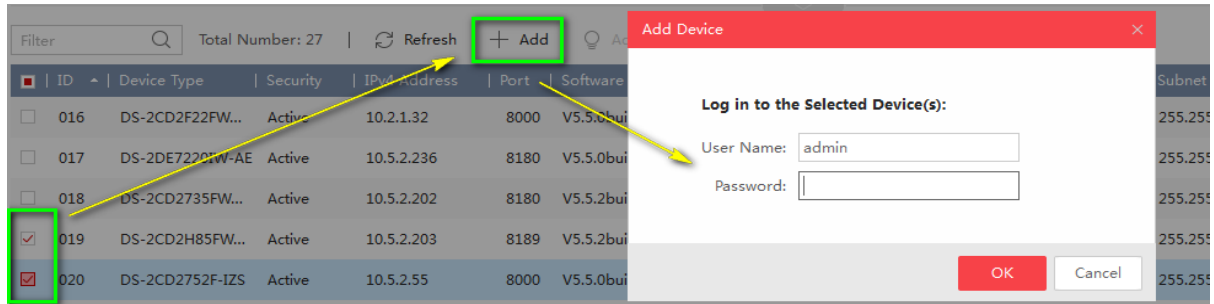
Note:

1. ONVIF user management system is independent from device management system;
2. The user list displays authorized users and access levels:
 - Media:** have access to get the real-time streaming, get a list of device supported functions, and read configurations (Profiles, DNS, network interfaces, endpoint reference, recordings, serial port and etc.) of device.
 - Operators:** have access to all settings except:
 - Causing changes to the system configuration, such as setting network default gateway;
 - Causing unrecoverable changes to the system, such as setting system factory default and upgrading system;
 - Reading confidential system configuration information, such as getting system log;
 - Administrators:** have unrestricted access to all settings.

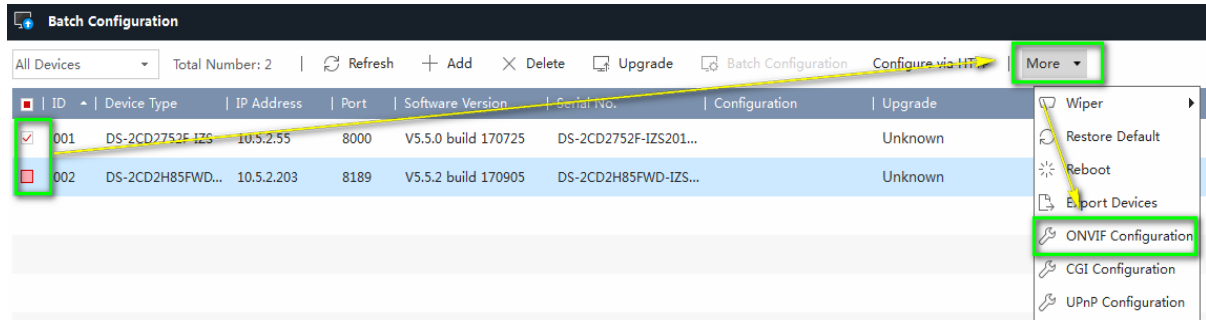
How to enable ONVIF in Batch Configuration Tool 2.0.0.6

Configuration Steps

- (1) Download & install BatchConfigTool from http://overseas.hikvision.com/en/Tools_82.html;
- (2) Install & open BatchConfigTool in your PC;
- (3) Select the online devices-> click **Add**-> login with **admin account**;

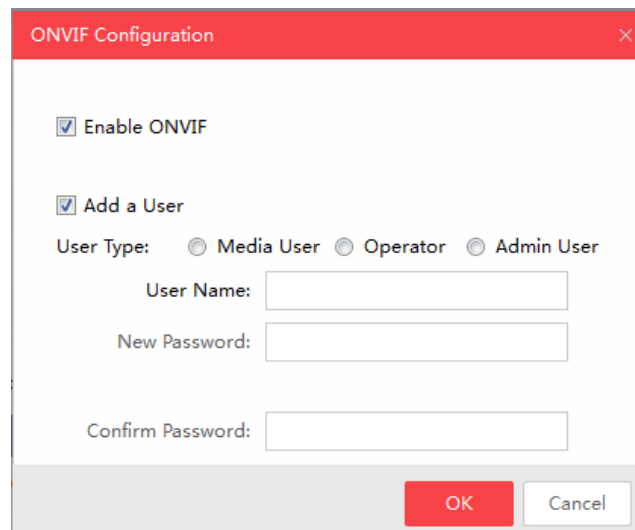


(4) Select the added device->click **More**->**ONVIF Configuration**;



(5) Click **Enable ONVIF** checkbox to enable this function;

(6) Click **Add** to add new users.



Title:	How to configure ONVIF Protocol	Version:	v1.0	Date:	11/3/2017
Product:	IPC	Page:	5 of 5		



First Choice for Security Professionals
***HIK*VISION Technical Support**