

iVMS-4200

Version:V2.6.1.2 build170318

Release Note

(2017-4-6 External)

General Information

Software Version	V2.6.1.2 build20170318
Network SDK Lib	V5.2.7.5 build20170217
Play Lib	V7.3.2.77 build20170316
VCA Config Lib	V3.4.12.1 build20170222
SADP Lib	V4.2.1.5 build20170316

Supported devices:

Front-end, Back-end products, video intercom products, access control products, security control panels- : released before the end of October, 2016.

V2.6.1.2 Key Updates

1. Optimize the device classifications to provide better user experience. Hikvision Device include below device type:
Encoding Device/Door Station/Decoder (64 Series)/Storage Server/Indoor Station/Master Station/Security Control Panel/Access Controller.

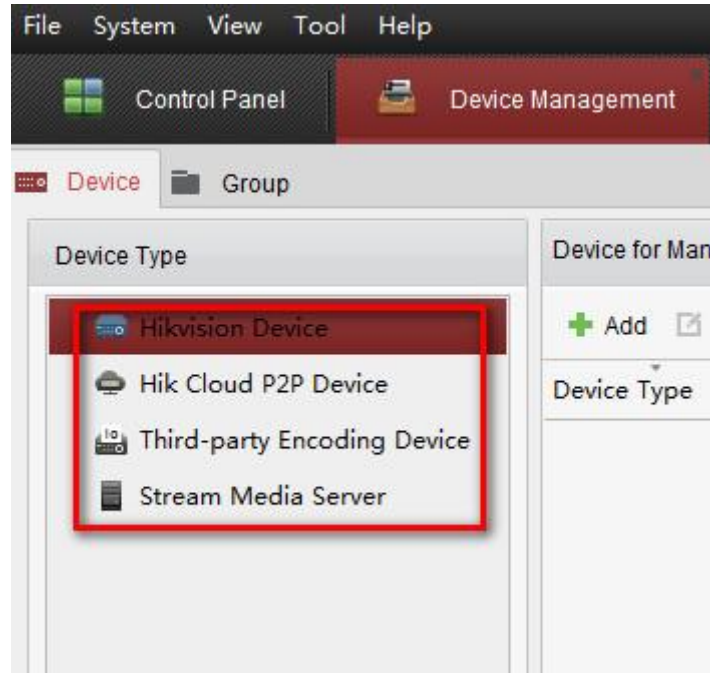


Figure 1

2. New design for module display, select the modules to display on the Operation and Control area of the control panel.

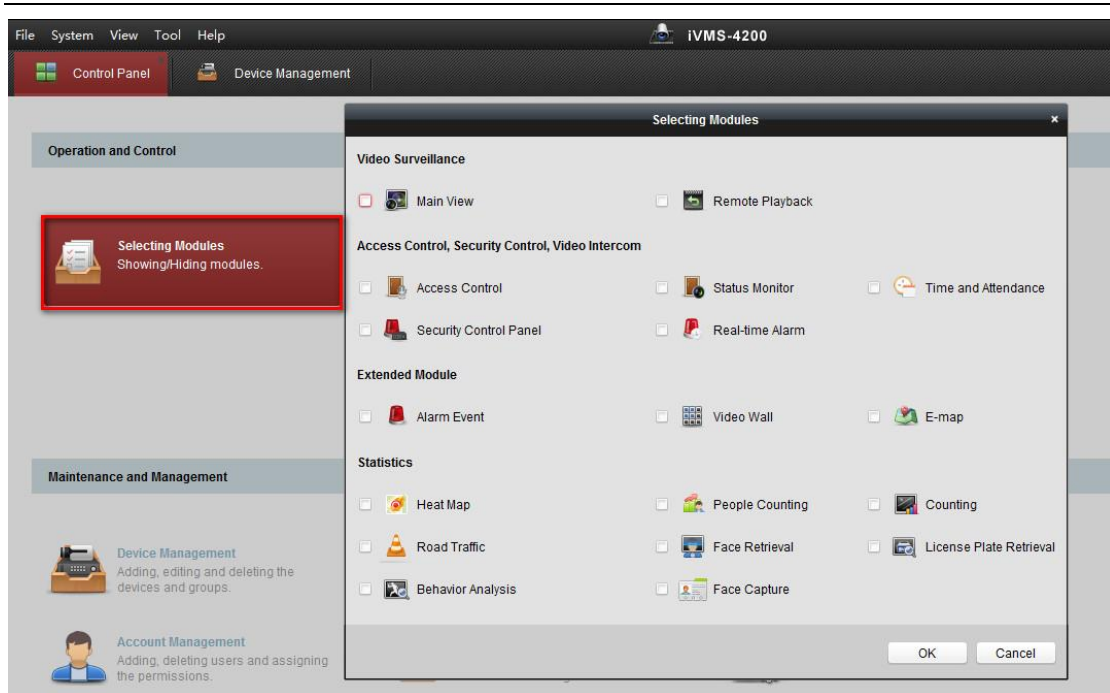


Figure 2

3. Optimize Access Control module (Figure3). And it includes the Video Intercom function (Figure4).

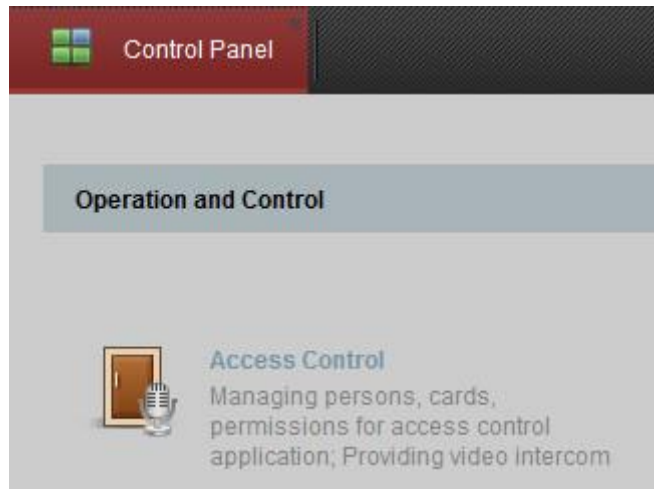


Figure3

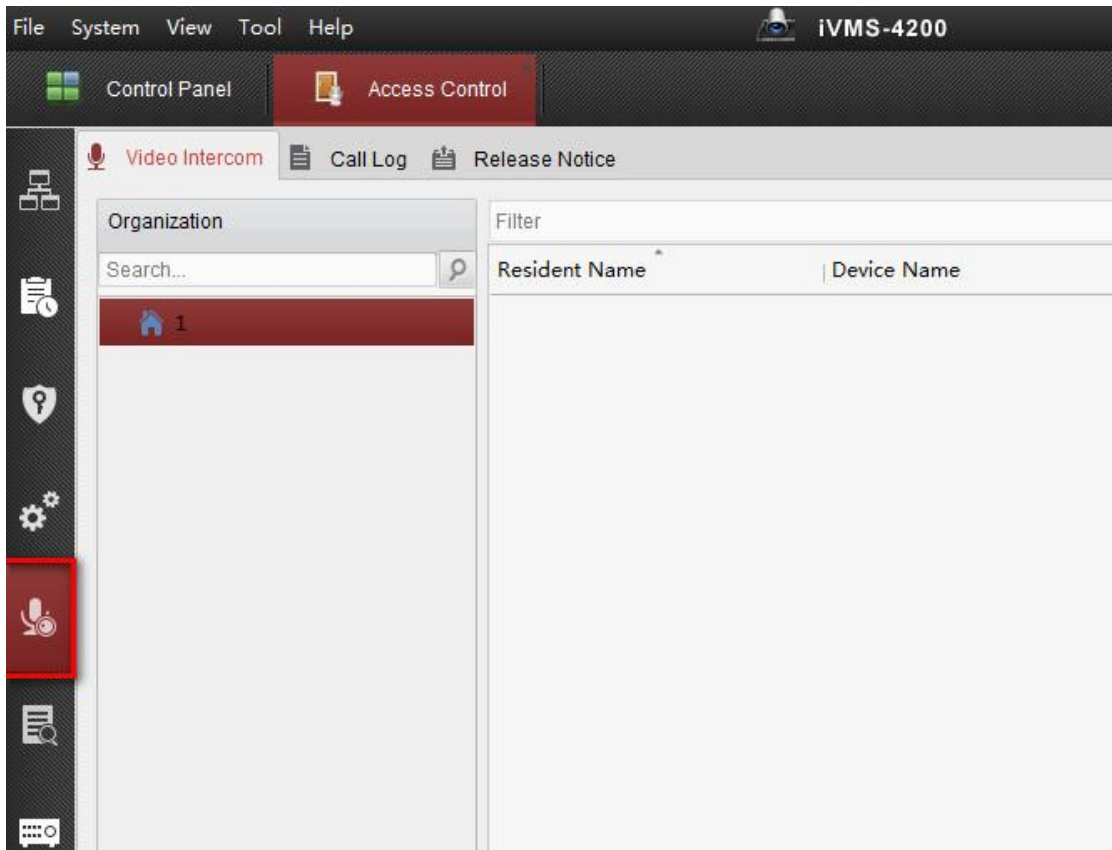


Figure4

4. Add Status Monitor module, it supports monitoring the door status, the card swiping record and the alarm.

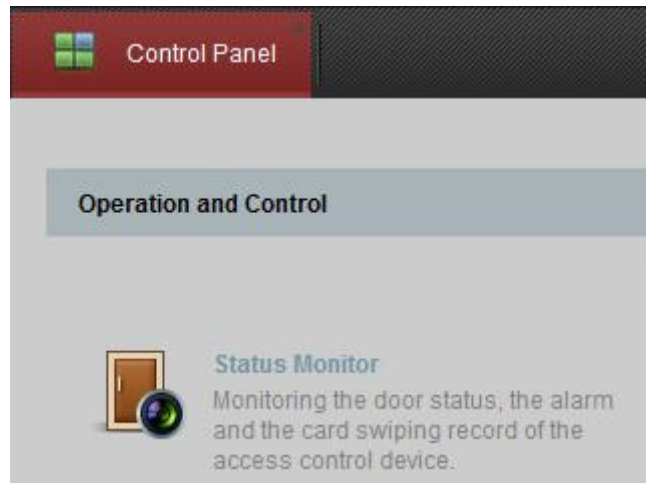


Figure 5

5. Add Time and Attendance module, it provides multiple functionalities, including shift schedule management, attendance handling, attendance statistics and other advanced functions.

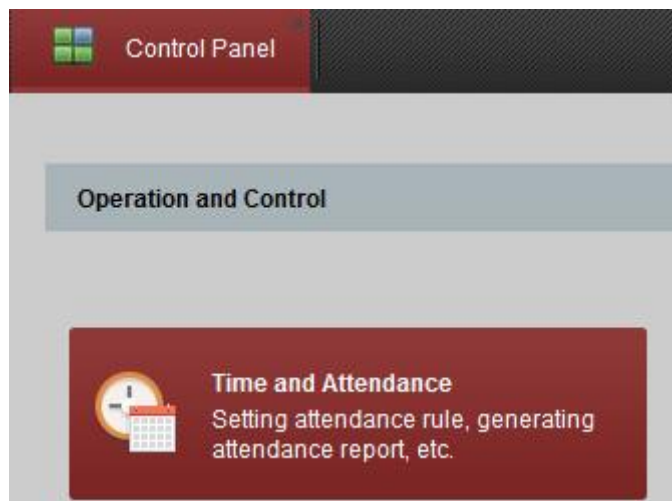


Figure 6

6. Optimize the Security Control Panel function to provide better user experience. And Real-time Alarm module provides displaying the real-time alarm of security control panel, acknowledging alarms, and searching the history alarms.



Figure 7

7. In Event Management module, add Access Control Event, Access Control Alarm Input, Event Card Linkage, and Cross-Device Linkage settings.
8. Counting and Heat map function is supported for back-end products.



Figure 8

9. Add Playback Stream Type for the device which supports dual stream recording.

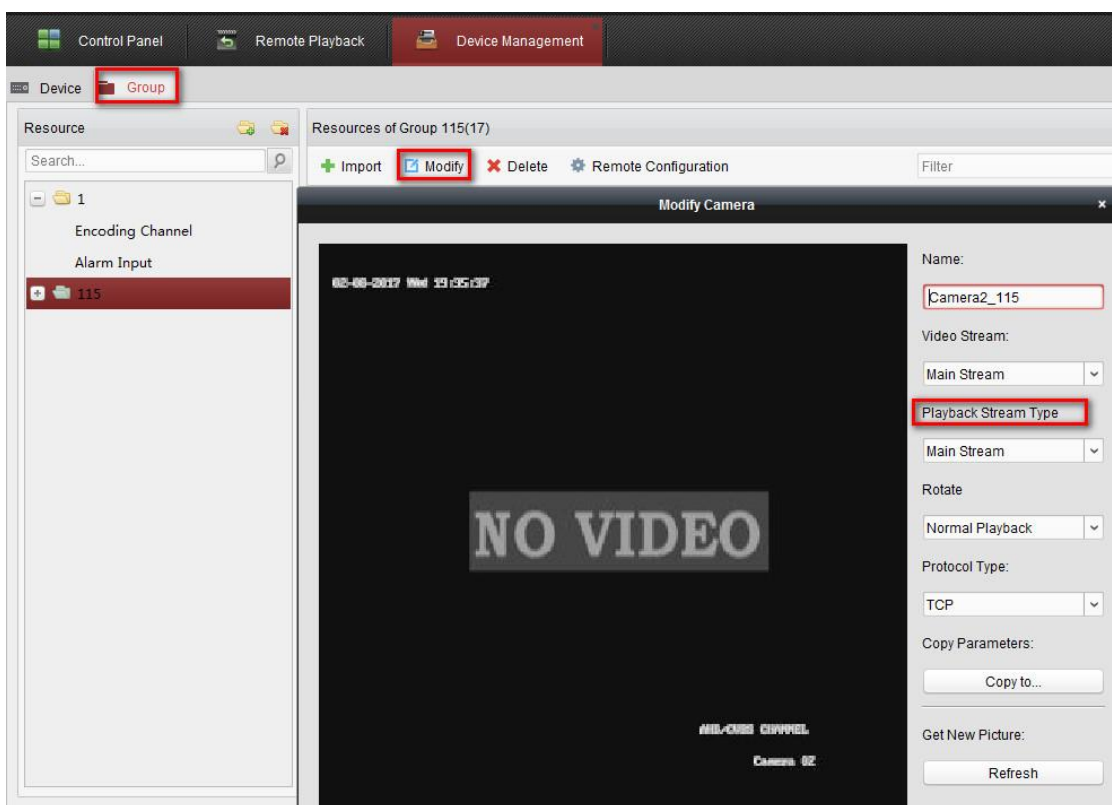


Figure 9

10. Support display temperature information on the live view and playback window and receiving alarm information for thermal device.
11. Support download player to record's saving directory when downloading the record files.

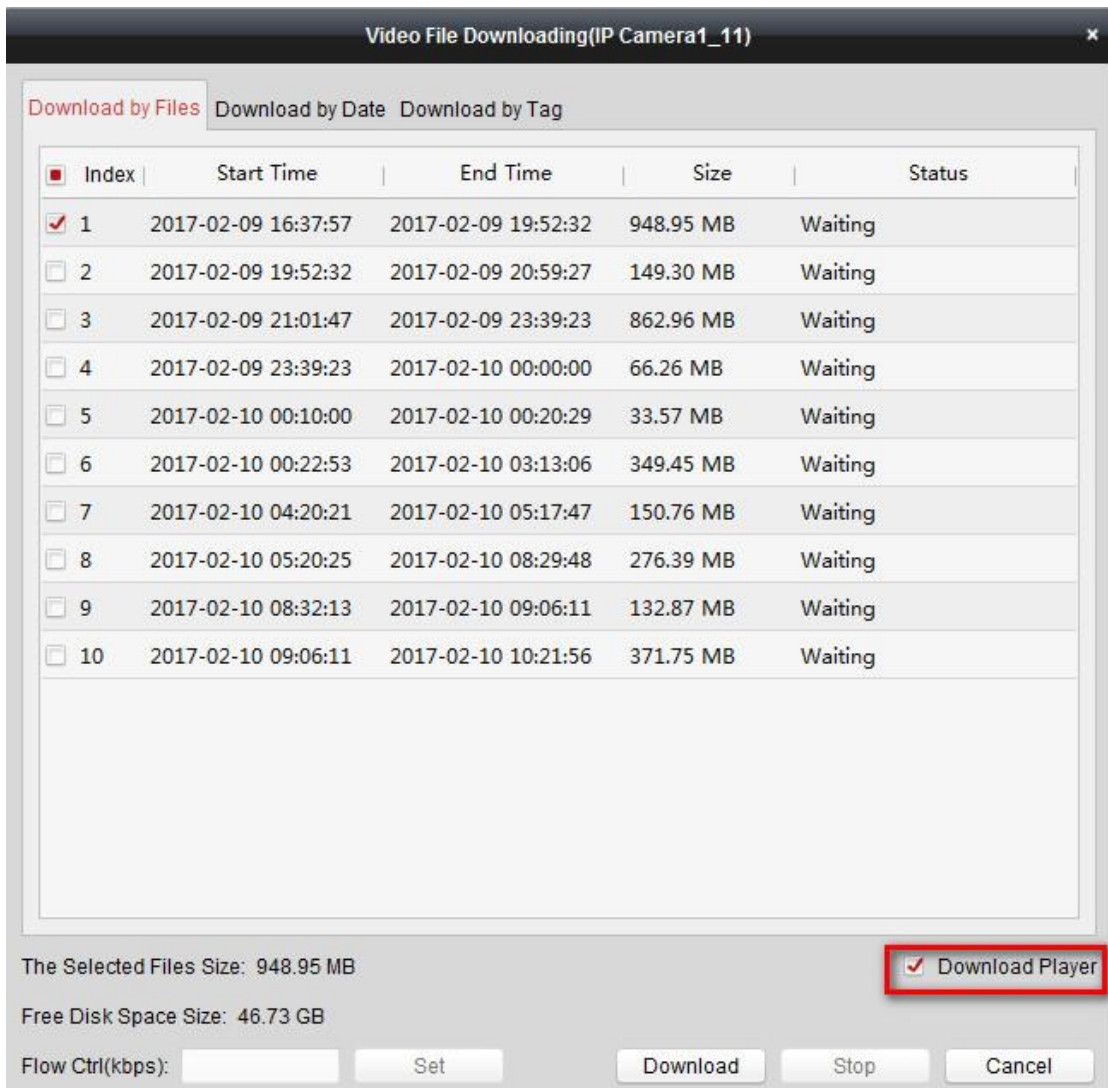


Figure 10

12. Support fisheye expansion in hardware decoding mode.
13. Support live view and playback function for DS-2DP1636-D in hardware decoding mode except the third stream. The number of connection of live view and playback is up to 6.

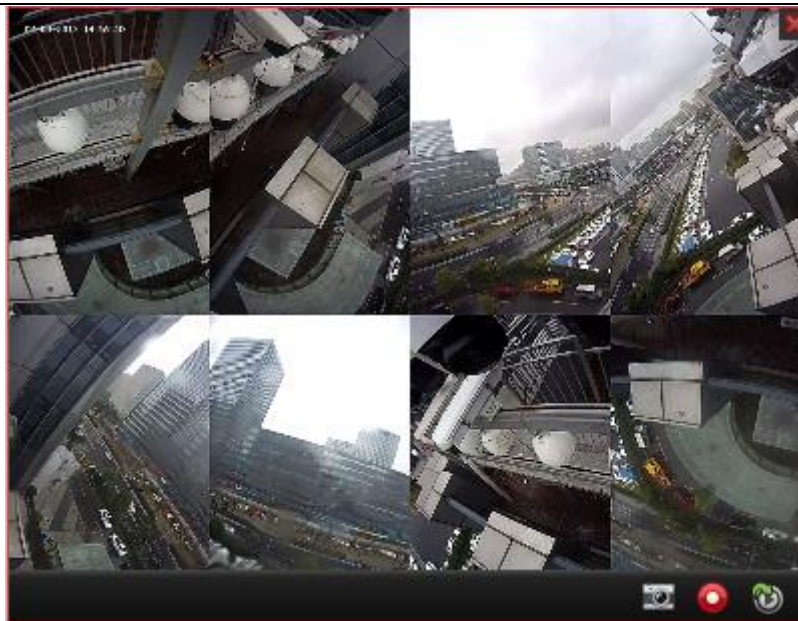


Figure 11



Figure 12

14. Support capturing the original image for DS-2DP1636-D in hardware decoding mode and in live view mode.
15. Add the selection of Enable Keyboard and Joystick.

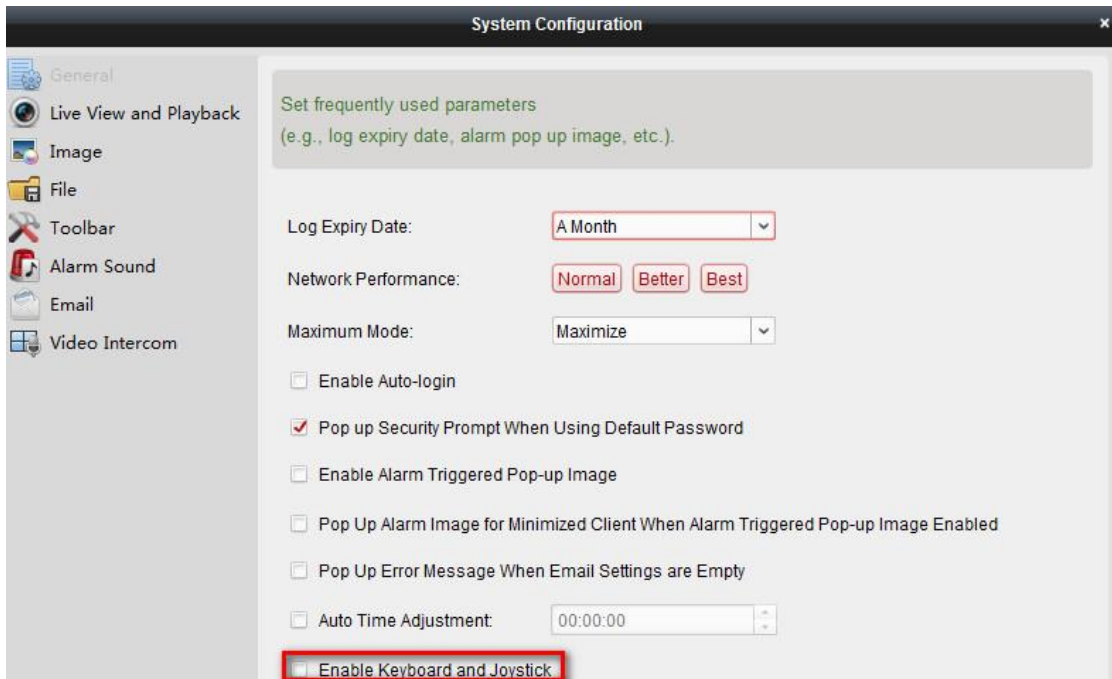


Figure 13

16. Set the schedule for backing up the system config file every week.

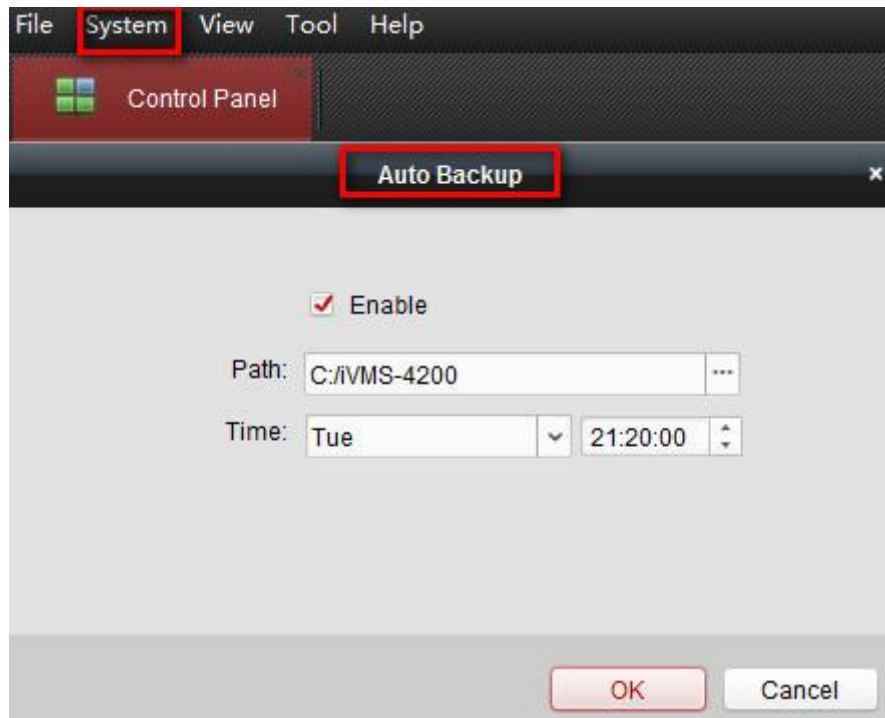


Figure 14

17. Provide adding devices by Hik-Connect Domain.

The image shows a software dialog box titled "Add". It contains several radio button options under "Adding Mode": "IP/Domain", "IP Segment", "Hik-Connect D..." (highlighted with a red box), "EHome", and "Serial Port". Below these are "IP Server", "HiDDNS", and "Batch Import". A second "Adding Mode" section has "Batch Adding" and "Single Adding" options, with "Batch Adding" selected. There are two text input fields: "Hik-Connect Account:" and "Hik-Connect Password:". A "Get Device List" button is positioned below the password field. At the bottom right, there are "Add" and "Cancel" buttons.

Figure 15

Add devices in batch:

Input the Hik-Connect Account and password, click Get Device List button to show the devices added to Hik-Connect account. Then select the devices as desired.

Adding Mode:

IP/Domain IP Segment Hik-Connect D... EHome Serial Port

IP Server HiDDNS Batch Import

Current Account: 11guah [Logout](#) Search...

<input type="checkbox"/> Nickname	IP	Device Serial No.
<input type="checkbox"/> M (... 10	.92	CS- 89588
<input type="checkbox"/> D 0... 1	.8	DS- 46843725
<input type="checkbox"/> D 8... 1	.8	DS- 1891952
<input type="checkbox"/> D ... 1	.8	DS- 2418E
<input type="checkbox"/> M 2... 10	.92	CS-

User Name: Password:

Export to Group
Set the device name as the group name and add all the channels connected to the device to the group.

[Add](#) [Cancel](#)

Figure 16

Add single device:

Input the device's required information and this device will be added to the client.

Add [X]

Adding Mode:

IP/Domain IP Segment Hik-Connect D... EHome Serial Port

IP Server HiDDNS Batch Import

Adding Mode: Batch Adding Single Adding

Nickname:

Device Serial No.:

User Name:

Password:

Hik-Connect Account:

Hik-Connect Password:

Export to Group

Set the device name as the group name and add all the channels connected to the device to the group.

Figure 17

18. 69 series decoder has been supported to use on the Video Wall module.