

Title:	How to Configure Multicast	Version:	v1.0	Date:	3/9/2017
Product:	Cameras, NVRs	Page:	1 of 7		

How to Configure Multicast

Description

Every device has access limit. If the total number of people trying to visit and preview the device via Internet is more than the limit, the rest would be unable to preview. In order to avoid this phenomenon, we can configure the device with a multicast IP and try to access the device through multicast protocol.

Preparation

- 1, Download the plug-in in the web browser.
- 2, Download iVMS-4200 and install it on PC.
- 3, A switch which supports multi-casting function.

Note:

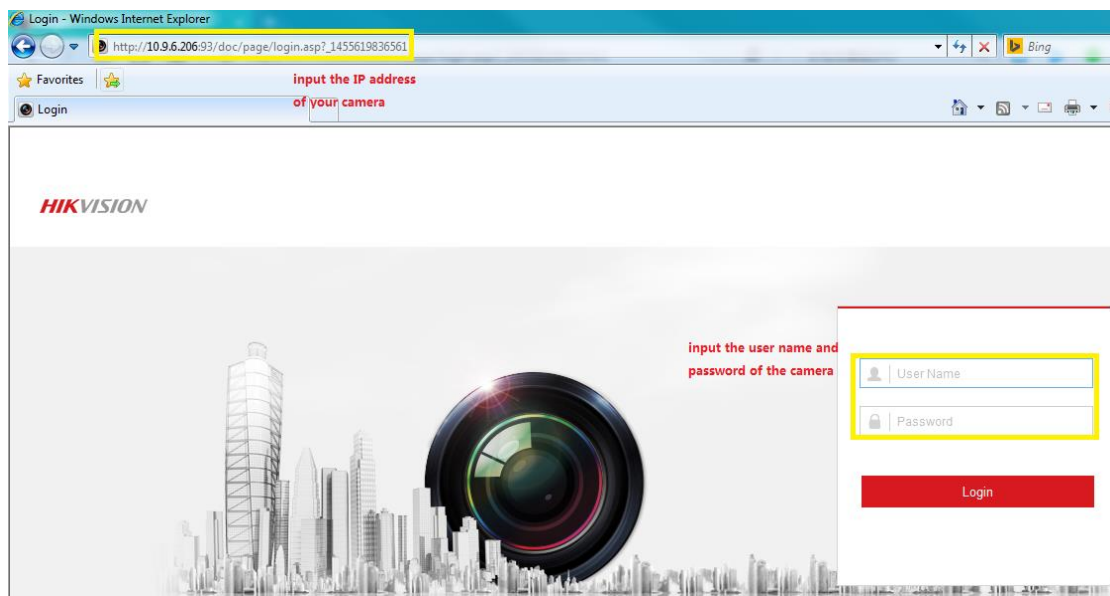
- 1, If a different version of iVMS-4200 has been installed on the PC, please uninstall it first via Install Shield Wizard and delete the file folder which was created during previous installation process.
- 2, Different IPC requires different multicast IP addresses.
- 3, The multicast IP configured in the IP camera belongs to multicast group.

How to configure multicast via IE:

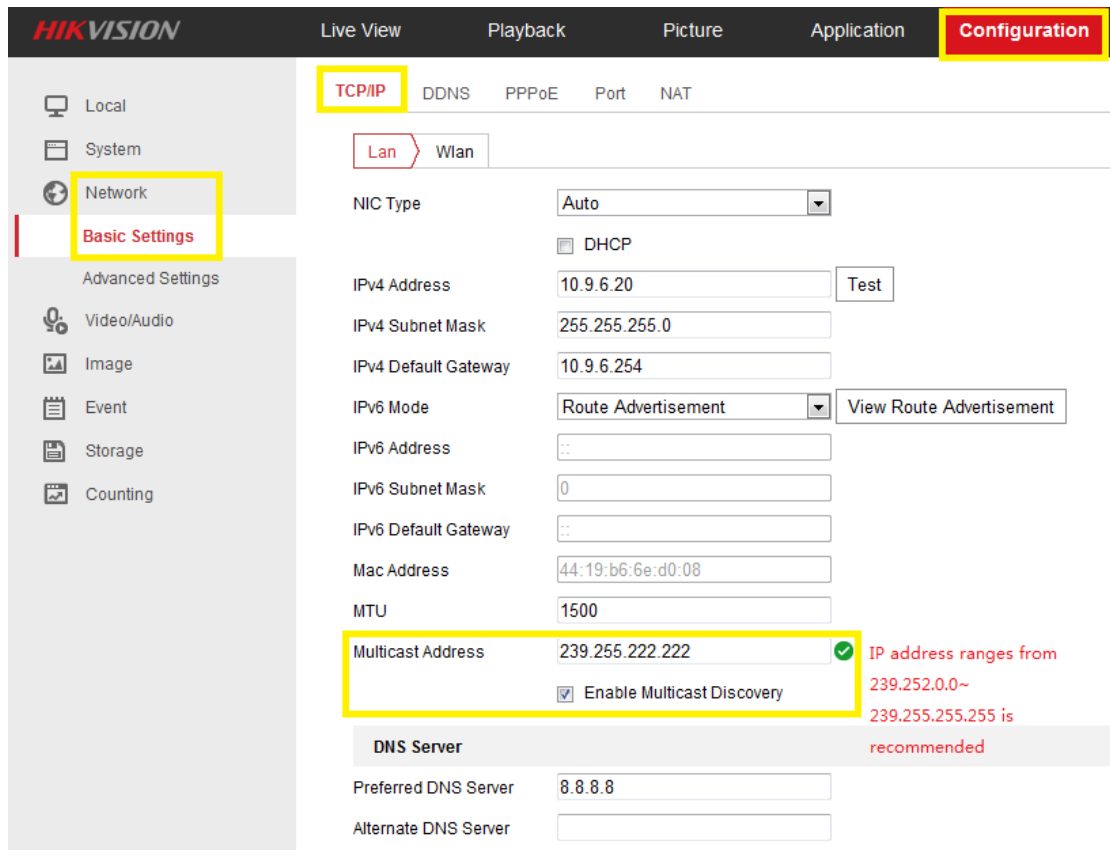
Steps:

1. Access to the device via browser.

Title:	How to Configure Multicast	Version:	v1.0	Date:	3/9/2017
Product:	Cameras, NVRs	Page:	2 of 7		

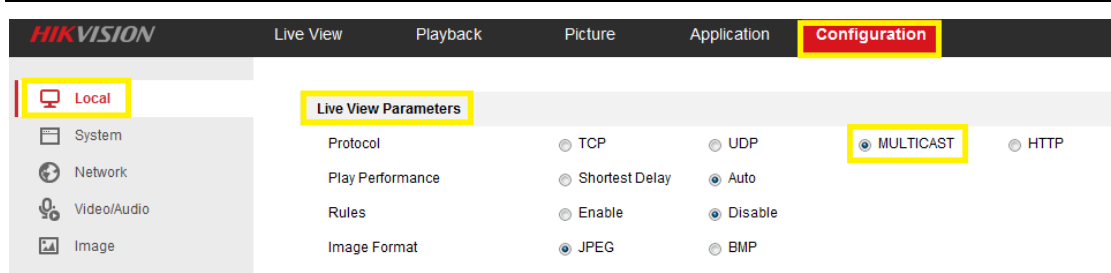


2, Select **Configuration-> Network-> Basic Settings-> TCP/IP-> Lan**, fill in the Multicast Address.



3, Select **Configuration->Local-> Live View Parameters**, select **MULTICAST**

Title:	How to Configure Multicast	Version:	v1.0	Date:	3/9/2017
Product:	Cameras, NVRs	Page:	3 of 7		

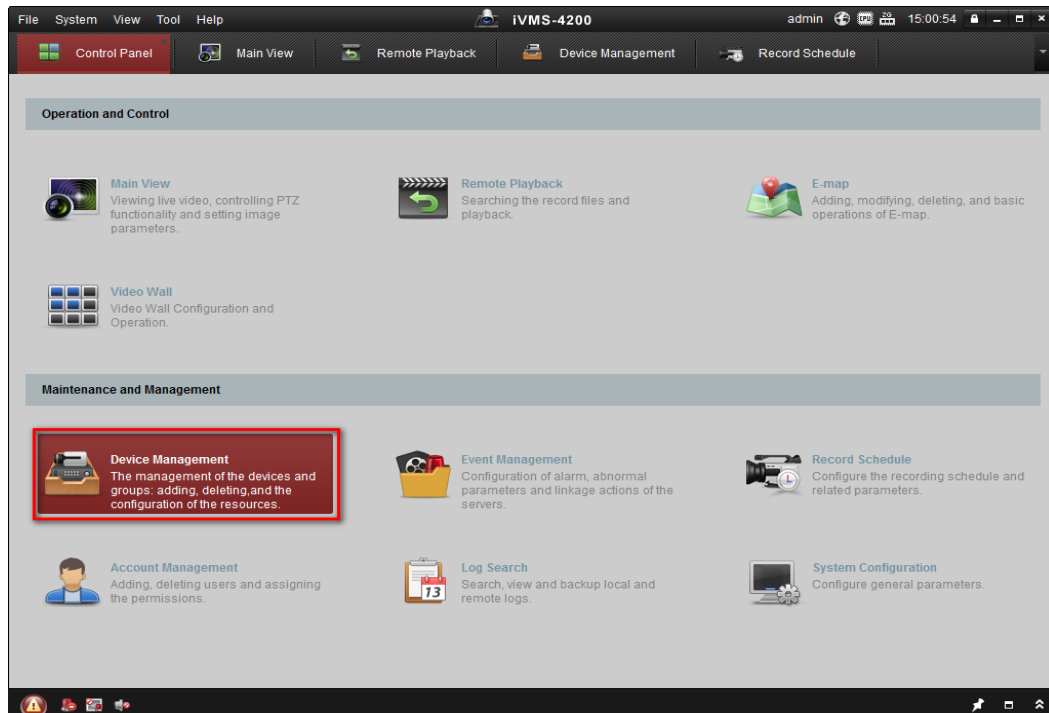


4, If there is someone else from **another PC** trying to view the device via web browser, just repeat step 3.

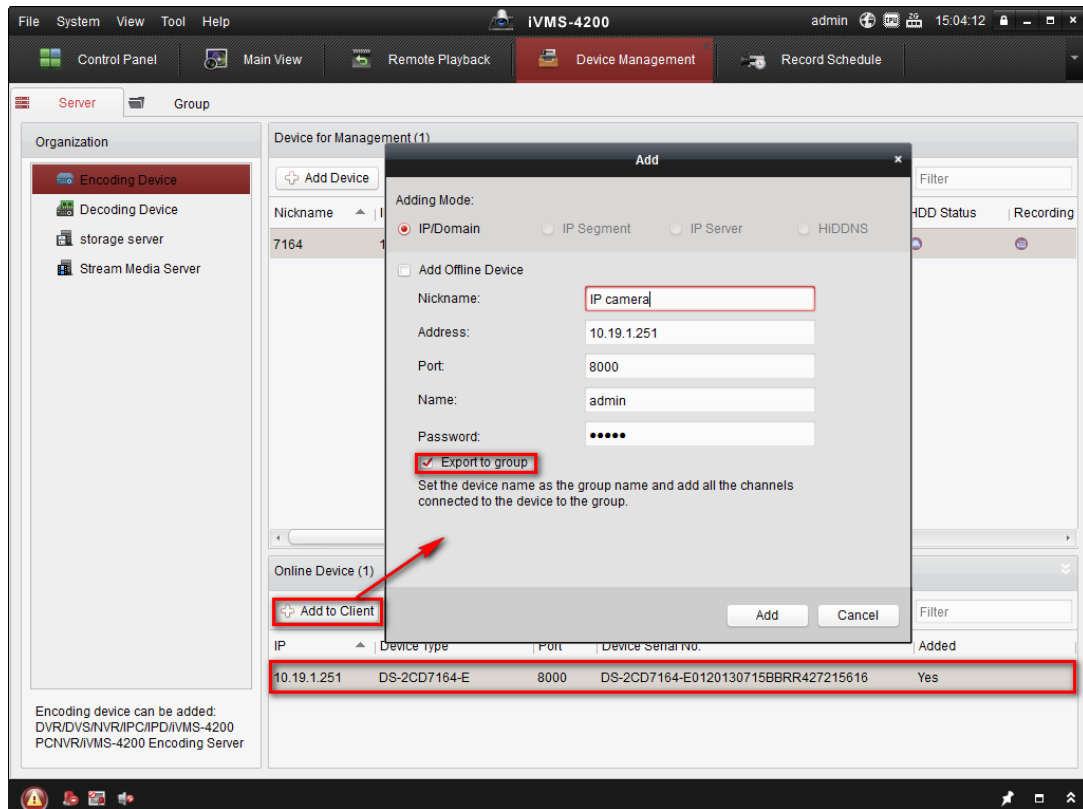
How to configure multicast via iVMS-4200:

Steps:

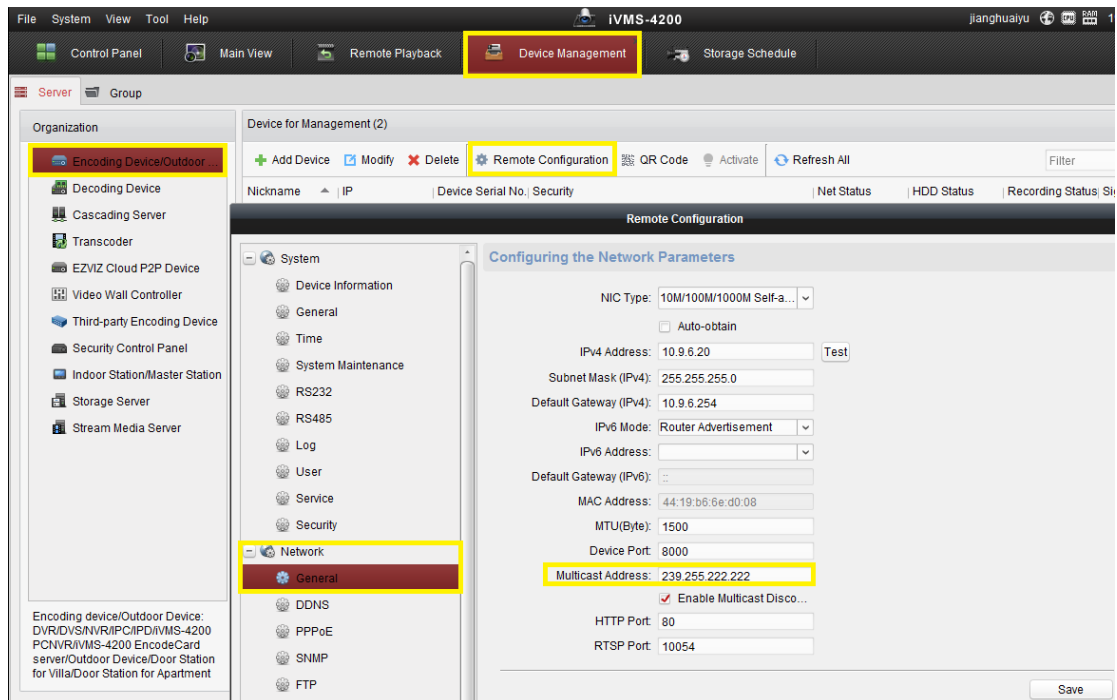
1, Enter **Device Management** interface.



2, Select one online device and click the Add to Client button. Type in the **Nickname, IP address, Port, Username and Password** (if the device is registered with HiDDNS, then the Device Domain Name and Server Name are required, click the checkbox of **Export to group** and click the **Add** button to add the device into iVMS-4200.

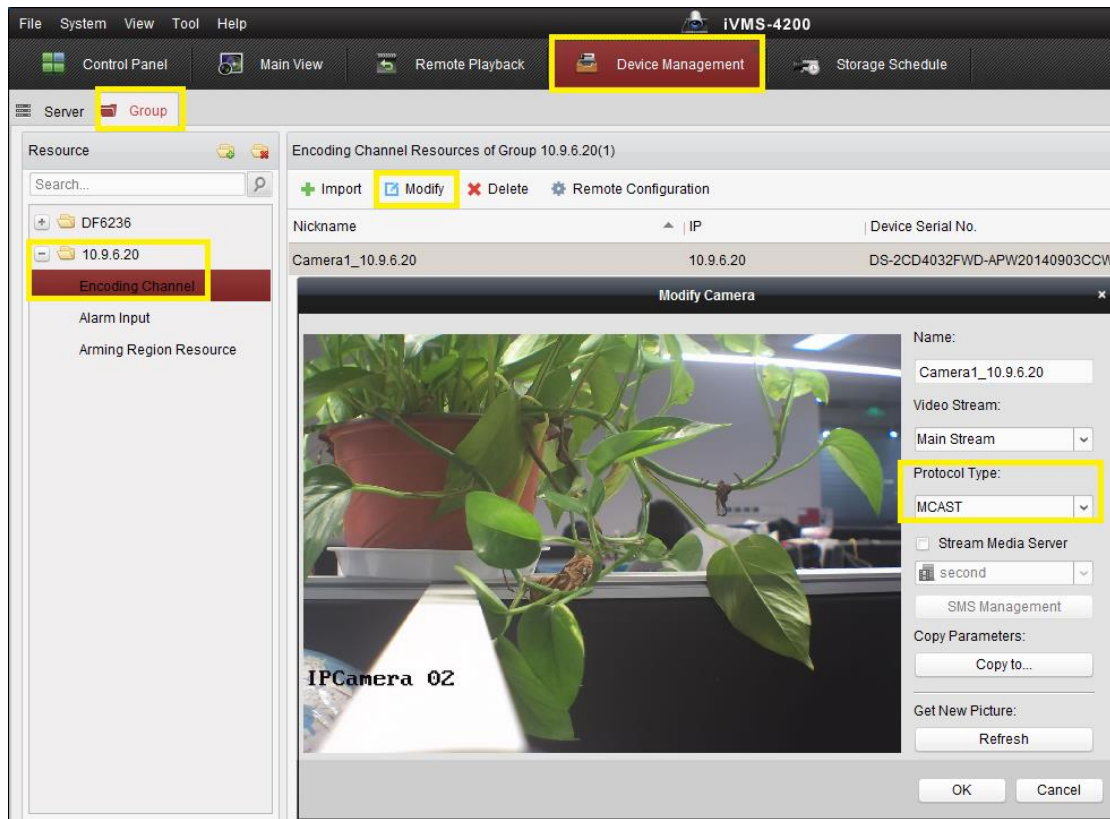


3, Select the device and click **Remote Configuration-> Configuration-> General->** fill in the Multicast Address.



4, Select the device and click **Group-> Device group-> Encoding channel-> Modify-> Protocol Type->** select MCAST.

Title:	How to Configure Multicast	Version:	v1.0	Date:	3/9/2017
Product:	Cameras, NVRs	Page:	5 of 7		

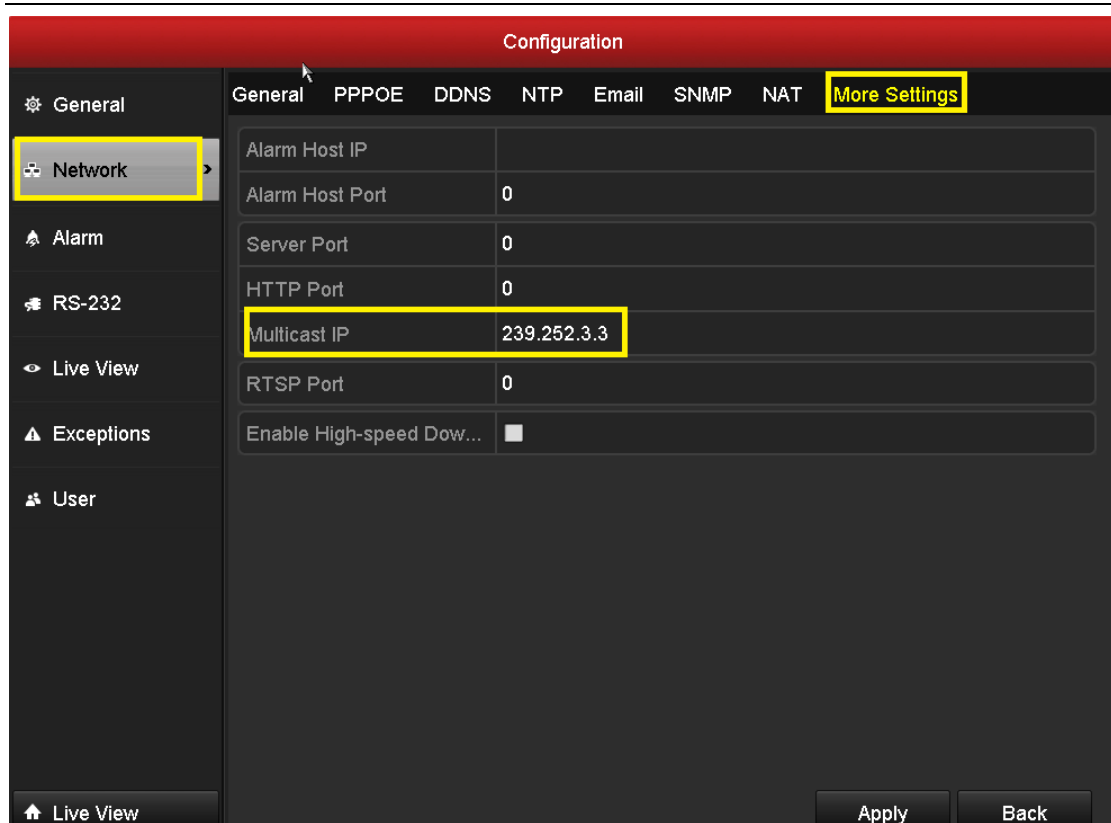


5, If there is someone else trying to live view the device via iVMS-4200, just repeat step 2.

How to configure multicast locally:

Steps:

Select **Menu->Configuration->Network->More Settings**, fill in the Multicast IP.



Multicast versus Stream Media Server

Both multicast and stream media server are used to decrease the pressure getting stream from the device with great effects. One of the disadvantages of multicast preview is that the switch must support multicast function.

Title:	How to Configure Multicast	Version:	v1.0	Date:	3/9/2017
Product:	Cameras, NVRs	Page:	7 of 7		



First Choice for Security Professionals

***HIKVISION* Technical Support**