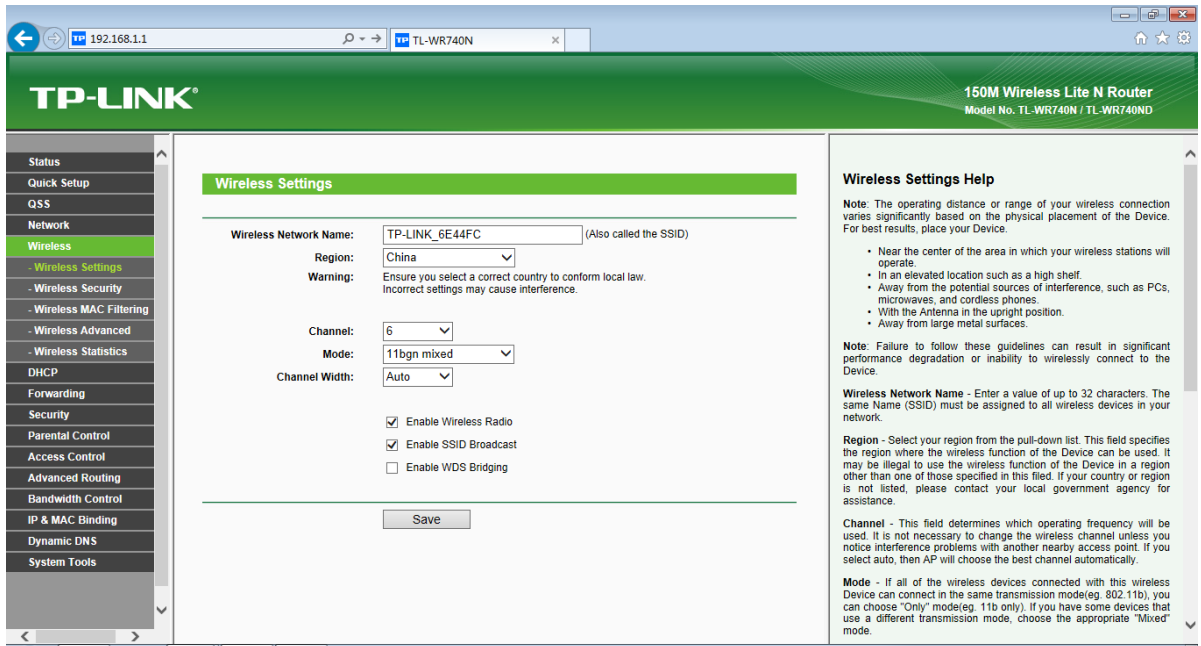


## 1) Wireless Router Configuration



'SSID No': Letter or number filled by user;

'Channel': '6' frequency band is normally used, which can be selected according to current environment;

Choose '54Mbps (802.11g)' in 'Mode'. Enable 'Enable Wireless' and 'Enable SSID broadcast' column;

Use 'Security Configuration' according to current environment; when it is enabled, 'security type', 'security option', 'secret key type' and 'secret key content' should be configured.

## 2) Login IPC using IE browser to set the wireless parameter. Take 10.9.6.212 as an example.

a) Fill in "http:// IP of IPC" in address bar, such as "http://10.9.6.212".



- b) Configuration-advanced configuration-network-TCP/IP, set **IPv4 address, gateway address** and **mask address** same as the router in your network and save the configuration.

The screenshot displays the Hikvision configuration interface. The left sidebar shows the 'Network' menu item highlighted. The main content area is titled 'Configuration' and has tabs for 'TCP/IP', 'DDNS', 'PPPoE', 'Port', and 'NAT'. Under the 'TCP/IP' tab, there are sub-tabs for 'Lan' and 'Wlan'. The 'Lan' sub-tab is active. The 'NIC Type' is set to 'Auto'. The 'DHCP' checkbox is unchecked, with a red note 'disable DHCP'. The IPv4 configuration fields are highlighted with a red box: 'IPv4 Address' (10.9.6.212), 'IPv4 Subnet Mask' (255.255.255.0), and 'IPv4 Default Gateway' (10.9.6.254). The 'IPv6 Mode' is set to 'Route Advertisement'. The 'DNS Server' section is also highlighted with a red box, showing 'Preferred DNS Server' (8.8.8.8) and 'Alternate DNS Server' (8.8.4.4) with a green checkmark. Red annotations include 'set IP address, mask address and gateway address' and 'enter the DNS server address'.

- c) Switch from LAN to WLAN, disable DHCP, set the IPv4 configuration of WLAN same as LAN, and save the configuration.