

# ALL-IN-ONE INDOOR STATION

Converge and Control Security with a Simple Touch



## APPLICATION TOPOLOGY



## FEATURES OVERVIEW

**Upgraded Interface**

**PoE Interface**

**Gesture Screen Lock**

**Product Specification**

- 10-Inch IPS Touch Screen
- 4-Core SoC for Better Performance
- New User Interface

**Android System (Version 10)**

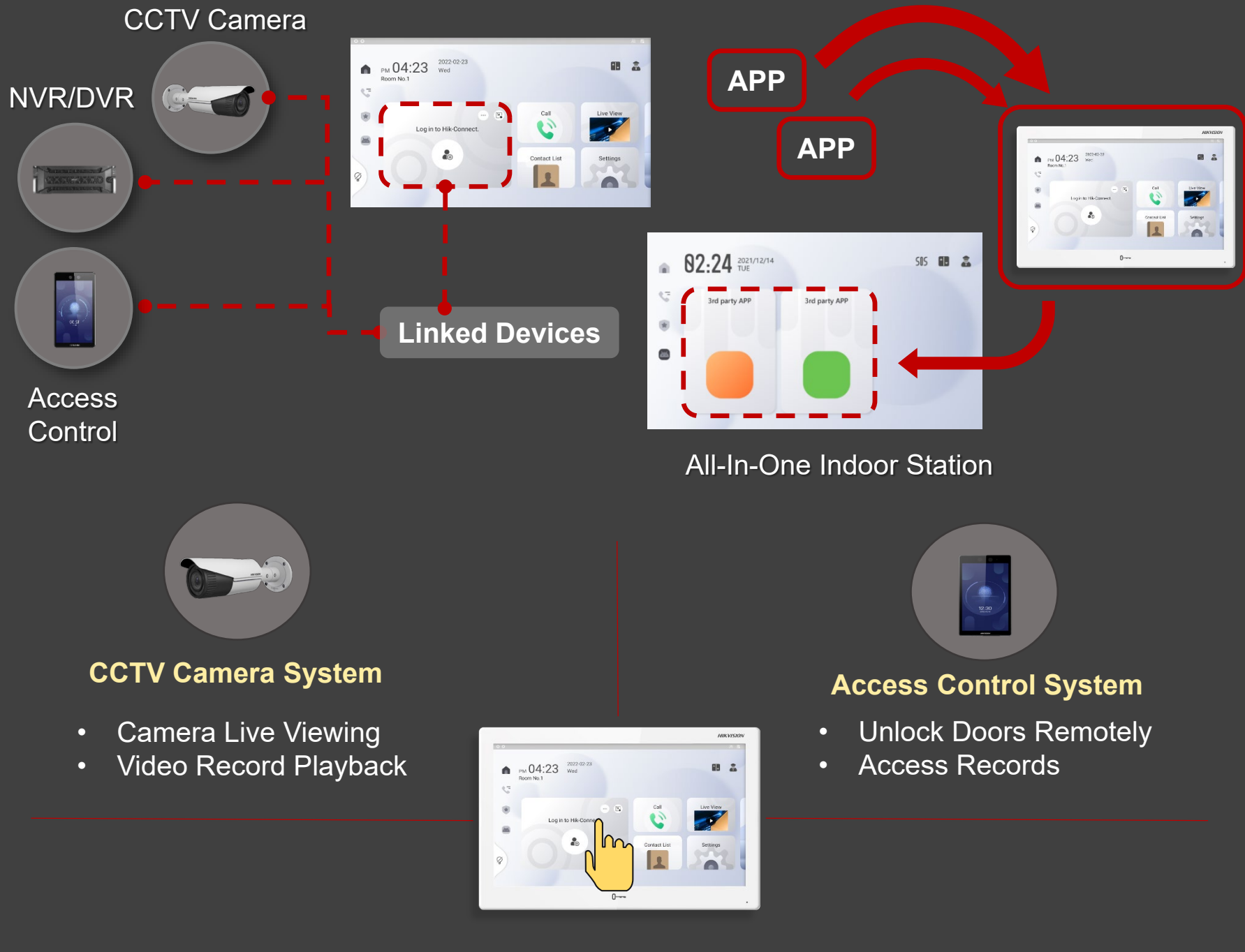
- Supports Android App Installation
- Open Platform for Third-Party Software Integration

**Built-In Hik-Connect App**

- All-In-One Management of Hikvision Devices
- Video intercom / Video Security / Access Control Devices

## ALL-IN-ONE MANAGEMENT

Built-in Hik-Connect for all-in-one device management ensures easy operations. Video intercom, intrusion alarms, access control, IPCs, NVRs, and other Hikvision devices can be centrally managed by the all-in-one indoor station.



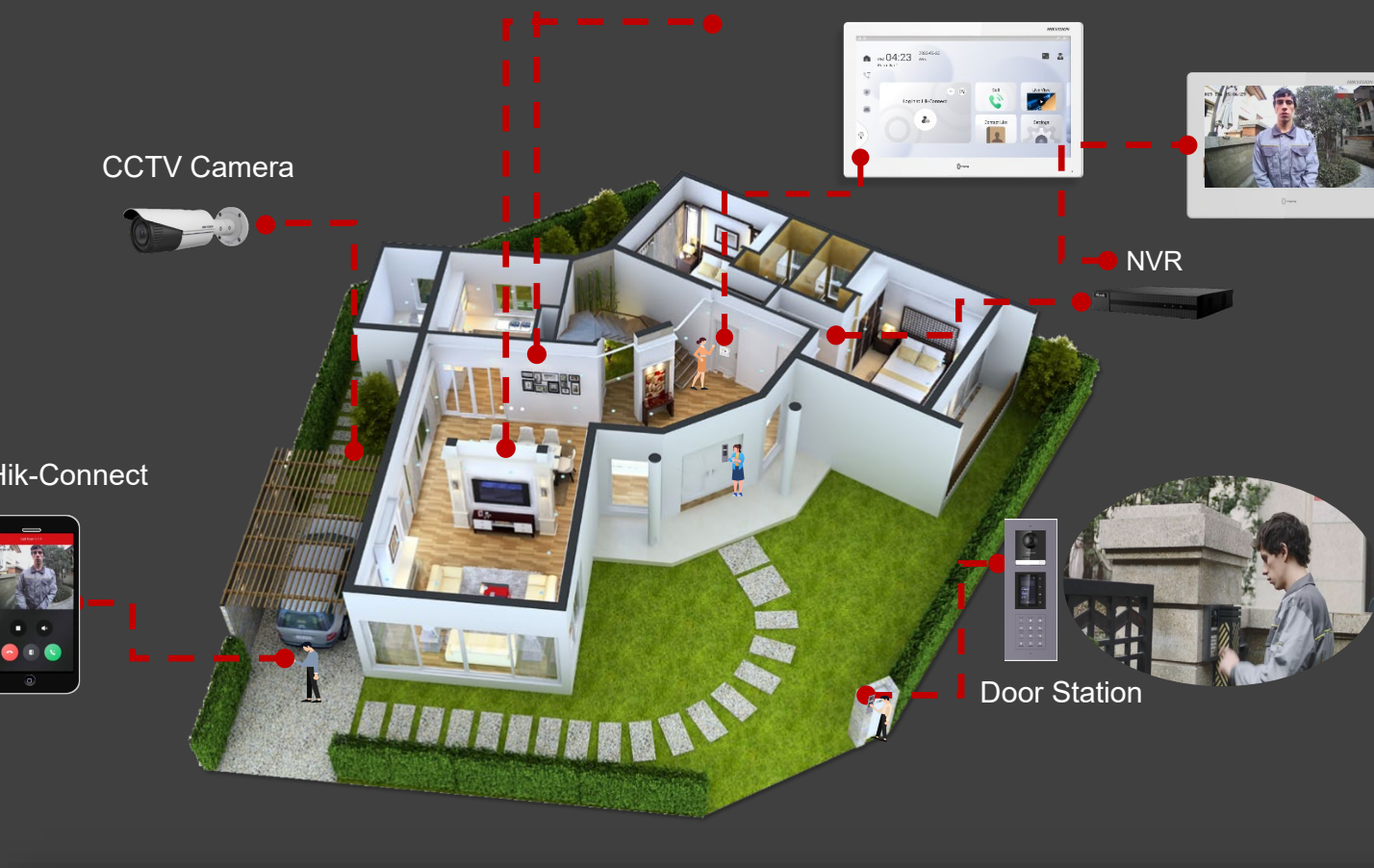
## A Simple One-Touch Operation

**Video Intercom System**

- Camera Live Viewing
- Receiving Intercom Calls
- Calling Management Center

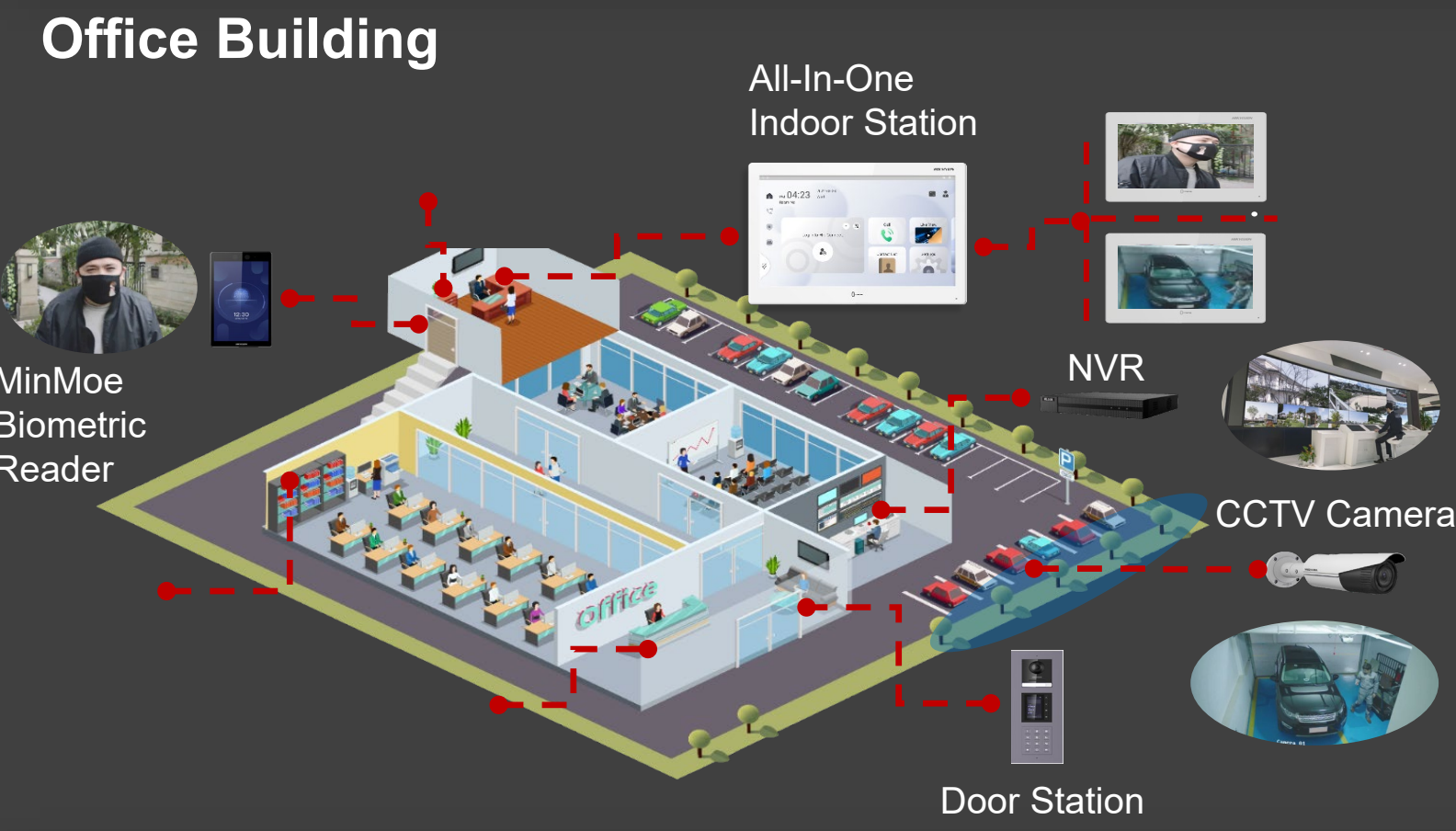
## Application

### Villas/Residential



PRODUCT TYPE	RECOMMEND MODELS
<b>Video Intercom Door Station</b>	<b>Modular Door Station:</b> DS-KD8003-IME1 & modules <b>Villa Door Station:</b> DS-KV8113-IME1
<b>Video Security Products</b>	<b>CCTV Camera:</b> 2 Series: DS-2CD2T46G2 <b>NVR:</b> K Series: DS-7716NI-K2

### Office Building



PRODUCT TYPE	RECOMMEND MODELS
<b>Video Intercom Door Station</b>	<b>Modular Door Station:</b> DS-KD8003-IME1 & modules <b>Villa Door Station:</b> DS-KV8113-IME1
<b>Video Security Products</b>	<b>CCTV Cameras:</b> Any Hikvision Camera <b>NVR:</b> I series: DS-7732NI-I4
<b>Access Control Terminal</b>	<b>MinMoe Touchless Terminal:</b> DS-K1T342DWX, DS-K1T671 Series Controller

**Note:** To ensure the best product experience, firmware upgrade may be required. Please check the firmware version of the Hikvision door station and indoor station when introducing the latest new firmware on the Hikvision company website to make sure the upgraded firmware version is equal to that on or after column 4 "Hikvision firmware version."

- If your product firmware version is on or before the version listed in column 3 "current firmware version" please be aware that you MUST upgrade the firmware. Please download the latest new firmware on the Hikvision company website to make sure the upgraded firmware version is equal to that on or after column 4 "Hikvision firmware version."
- If your product's current firmware in use is newer than the column 3 version below, you are up-to-date and no firmware update is needed.

CATEGORY	MODEL NUMBER	CURRENT FIRMWARE VERSION	UPGRADE FIRMWARE VERSION	TIPS FOR FIRMWARE UPGRADE
Indoor Stations	DS-KC001	All firmware is compatible with the B version indoor station		
	DS-KH6320-WTE1	V2.1.2_build211116	V2.1.34_211118	Later firmware currently requires a one click enable North America Day Light Saving rule "DST"
	DS-KH8350-WTE1	V2.1.16_build210623	V2.1.28_build210803	
	DS-KH9510-WTE1 (non-B version)	V2.0.8_2020102	V2.2.526_211126	
	DS-KH9310-WTE1	V2.2.31_210702	V2.2.51_211110	
Door Station	DS-KB8113-IME1	V2.1.35_build210420	V2.1.35_210507	Later firmware currently requires a one click enable North America Day Light Saving rule "DST"
	DS-KV8113-WTE1	V2.1.35_build210406	V2.1.35_build210406	No Features Lost
	DS-KV8213-WTE1	V2.1.35_build210420	V2.2.53_220108	
	DS-KV8113-WTE1(B)	V2.1.2_build211116	V2.1.34_211118	
	DS-KV8413-WTE1 (B)			



For more information, please scan the QR Code.