



HIKVISION:
**Providing
Solutions As
Unique As
Your Business**

Hikvision Security Solutions for Grow Facilities and Dispensaries

HIKVISION[®]



Robust Security for Regulatory Compliance

Hikvision technology makes it easier than ever for cannabis distributors, growers, and retailers to protect assets and meet local and state regulations—including 24/7 storage of surveillance video—without exceeding budgets.

Perimeter Protection, License Plate Recognition, Early Fire Detection, and Access Control for employee-authorized access, all support a comprehensive security ecosystem for your business.

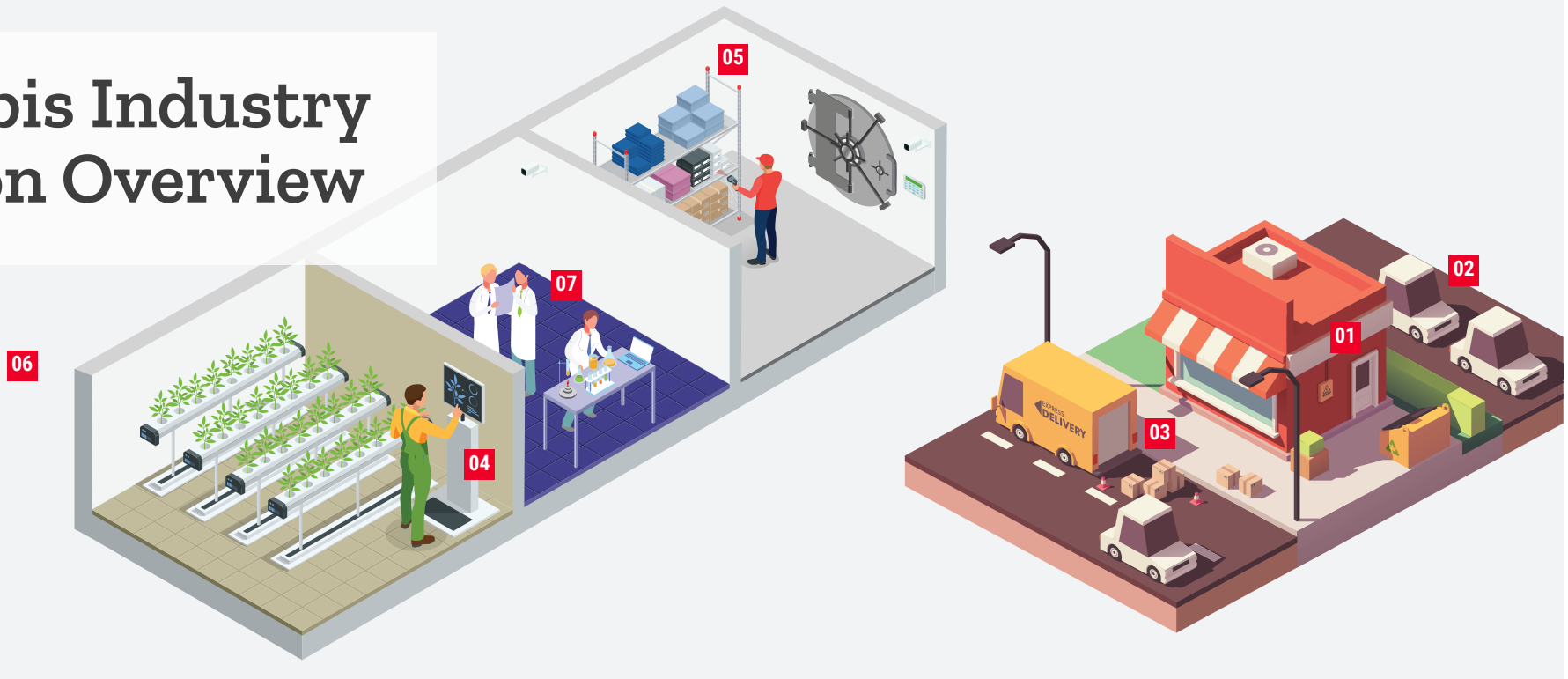
SECURITY EQUIPMENT THAT PROVIDES BUSINESS INTELLIGENCE AND BETTER ROI

Increased demand for cannabis combined with constantly evolving regulations creates a monumental challenge for cannabis distributors, growers, and retailers. Hikvision offers leading edge technology with outstanding value, making it easier than ever to maintain video recordings as needed to meet local and state regulations.

Hikvision offers this and more:

- Affordable video monitoring and recording for regulatory compliance, within budget
- Point-of-Sale (POS) integration with in-store video for transaction verification and prevention of costly customer exceptions
- Smart retail applications, including Queue Management, Customer Traffic Counting, Multi-Target and Multi-Type Detection and Heat Mapping
- HikCentral, Hikvision's central management system (CMS), enables easy management for single and multiple sites from one central location

Cannabis Industry Solution Overview



MAP LEGEND

01 Stores:

Panoramic Monitoring, POS Overlay and smart retail solutions including Queue Management, Attribution Search, Customer Traffic Counting and Known Shoplifter Alarm protect indoor retail operations.

02 Parking Lots:

Excellent low light performance and panoramic monitoring protect the parking lot and prevent vehicle damage complaints. LPR cameras help manage unauthorized parking.

03 Transportation:

Mobile surveillance and body-worn cameras are equipped to monitor the whole transportation process.

04 Grow Rooms:

Hikvision HeatPro cameras provide 7/24 continuous monitoring without supplemental lighting so as to prevent harmful effects on the maturation cycle of the cannabis.

05 Production Areas:

Full coverage video monitoring protects against theft and damage. Indoor PTZs can help monitor trim rooms and production processes to reduce theft and invalid SOPs. With advanced thermal technology, Hikvision thermal cameras can detect temperature anomalies and send instant alarms to avoid file damage.

06 Perimeter Protection:

Perimeter protection is extremely important for proprietors. Hikvision provides efficient and cost-effective thermal perimeter protection and human/vehicle detection solutions to prevent major loss due to intrusion.

07 Security Rooms:

HikCentral VMS provides unified video, alarm, and access control management and health monitoring. Central Storage provides reliable and cost effective long term data protection.

STORES

DeepinView Cameras:

- Upgrade to a Smart Store with built-in AI technology including foot-traffic counting, attribution search and VIP recognition/known shoplifter alert.
- Queue Management: Knowing the wait times of customers from check-in to being served will help increase customer satisfaction and management efficiency.



Panoramic Monitoring:

- Cost effective solution with one camera covering large areas inside the store, providing full coverage video surveillance to reduce risk of theft and accidents.

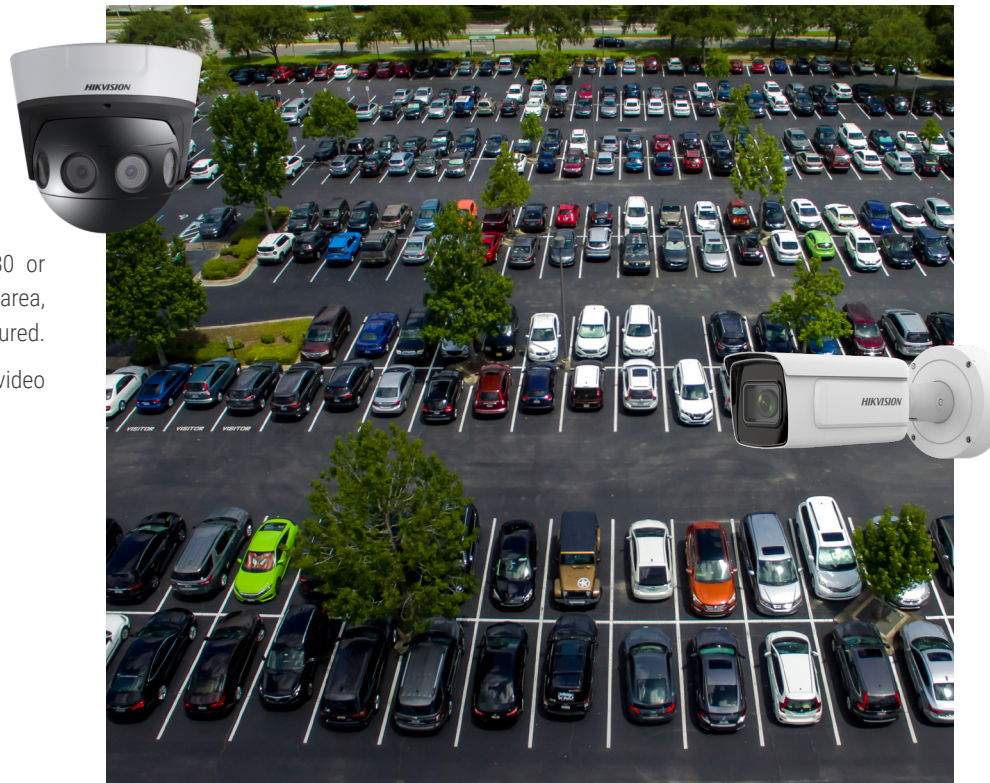
POS Overlay:

- POS integration provides in-store video for transaction verification and prevention of costly customer disputes, as well as employee theft.

PARKING LOTS

Vehicle Damage Complaints:

- Use a single high-resolution camera with 180 or 360-degree views to cover the complete area, ensuring any incidents in the parking lot are captured.
- Prevent customer complaints due to lack of video evidence when an incident happens.



Unauthorized Parking:

- Unauthorized parking in reserved parking spaces is more likely to happen in open parking lots.
- LPR cameras can detect unauthorized vehicles and notify security personnel to take action.

TRANSPORTATION

Mobile Surveillance:

- Hikvision professional mobile NVRs and cameras are installed to monitor and record the whole transportation process.
- Keep your supplies safe and stay in compliance with regulations – Hikvision can help.



Body Worn Camera:

- Drivers equipped with body worn cameras during working hours can help reduce the risks of merchandise damage, theft and non-standard operations.

GROW ROOMS

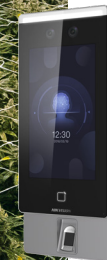
PCI Camera:

- Great low light performance.
- Built-in human detection for off-hour monitoring.
- No supplemental lighting prevents negative effects on the maturation cycle of cannabis.



Standalone Access Control Terminals:

- With multiple biometric authentications, unauthorized persons will be prevented from getting into facilities, even by attempting to steal or borrow ID cards.



PRODUCTION AREAS

Panoramic Monitoring:

- This cost-effective solution covers large areas inside storage rooms with one camera. Full coverage video surveillance reduces risks of theft and accidents.
- Indoor PTZ cameras monitor trim rooms and production processes to reduce theft and invalid SOP.



Early Fire Detection:

- Advanced thermal technology detects abnormal temperature changes, providing early warnings of overheating or fire before damage occurs.
- Instant alarm notifications get sent to security managers for immediate action.

PERIMETER PROTECTION

False Alarm Reduction:

- With an advanced deep learning algorithm, Hikvision AI cameras can filter false alarms caused by rain, leaves, and small animals, and only focus on humans and vehicles.
- Quick search for events helps reduce costs and the time needed to verify alarms.



Thermal Intrusion Detection:

- The latest generation of cost-effective thermal cameras make it faster and easier for business owners to secure their perimeters – even in the dark and in challenging weather conditions like fog, heavy rain and snow.

SECURITY ROOMS



HikCentral CMS:

- Powerful management software provided by Hikvision can be scaled based on need, only adding the necessary licenses as requirements grow, keeping initial costs low.
- One unified platform provides video surveillance, access control management, evidence management, alarm management, and more.
- Health Monitoring minimizes any potential for video loss due to network failure.



Video Storage:

- Advanced H.265/H.265+ compression effectively reduces data storage space.
- Central Video Storage is low cost, reliable, and highly effective, and fulfills requirements for long-term and off-site video storage.





Advanced Features at Prices to Meet Budgets

Hikvision USA Inc.
18639 Railroad Street
City of Industry, CA 91748

Hikvision Canada Inc.
4848 Levy Street
Saint-Laurent, Quebec H4R 2P1

Contact Information

Toll-Free: +1 866-200-6690 (U.S. and Canada)

Phone: +1 909-895-0400

Email: verticals.usa@hikvision.com

hikvision.com

Tech Support

Toll-free: +1-866-200-6690, press option 1

U.S. Email: techsupport.usa@hikvision.com

Canada Email: techsupport.ca@hikvision.com

Connect with us: [Twitter](#) [Facebook](#) [LinkedIn](#) [YouTube](#) [Instagram](#)

©2020 Hikvision USA Inc. and Hikvision Canada Inc. All rights reserved. Hikvision is a registered trademark of Hikvision Digital Technology Co., Ltd. in the US, Canada and other countries. All other trademarks, service marks, and product or service names are trademarks or registered trademarks of their respective owners. Product specifications and availability are subject to change without Notice.

HIKVISION[®]