

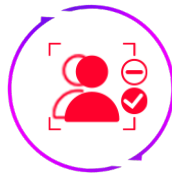
Hikvision Next Generation DeepinView Cameras

Focus on Key Events, Gain Actionable Security
and Operational Insights

HIKVISION

Fully Loaded Cameras Fueled by AI Technology

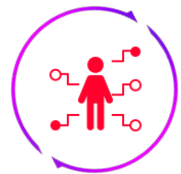
Hikvision's second generation DeepinView camera line features our latest AI video analytics and Deep Learning technology. The camera is equipped to detect multiple attributes such as clothing color and accessories with exceptional accuracy. It can detect and provide automatic alerts for unusual activities in a crowded scene, reducing false alarms by more than 95 percent. DeepinView cameras have a powerful 6-in-1 switchable Deep Learning algorithm in one camera housing that provides detailed and valuable business and operational insights. This helps users quickly locate critical information and video evidence to take immediate action.



Multi-target Detection



Attribute-based
People Counting



Attribute Search



**6-IN-1
ALGORITHM
INTELLIGENCE**



Queue Management

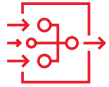


Perimeter Protection



Area Density Control

Features



6-in-1 Switchable Algorithms

Powerful AI with Deep Learning technology, users can easily enable an algorithm manually for dedicated use.



Hikvision LightFisher Technology

The 4 MP camera offers enhanced Wide Dynamic Range (140 dB), intelligently producing images with clear details under strong backlight or in areas with a mix of bright and dark lighting.



Auto Iris & P Iris, EXIR 2.0

DeepinView offers both Auto Iris and P Iris options, automatically adjusting the lens opening based on lighting conditions. It is highly adaptive to lighting changes throughout the day, producing high quality images 24/7



Hikvision DarkFighter Technology

Using Hikvision's unique ISP DarkFighter technology with its greater than 1/1.8-inch advanced sensor, the camera delivers clear images and greater detail in low lighting conditions, and at nighttime.



ePTZ Auto Tracking

ePTZ auto tracking of people or vehicles displays more details of targeted objects under limited or unstable network bandwidth.



Multiple Streams

5 defined streams plus 5 custom streams provide convenience for integration with various project applications.



H265+ Video Compression

Effective H.265+ video compression technology for bandwidth and storage savings.



Smooth Streaming

Leveraging unique Machine Learning technology, cameras detect network deficiency and adjust parameters to ensure smoothness of video. Smooth Streaming functionality enhances video quality in a variety of network conditions.



Simple Third-Party Integrations

Provides a rich set of metadata, allowing third-party integrators the flexibility to use intelligent analysis results. Capabilities can be further expanded with customized project development.



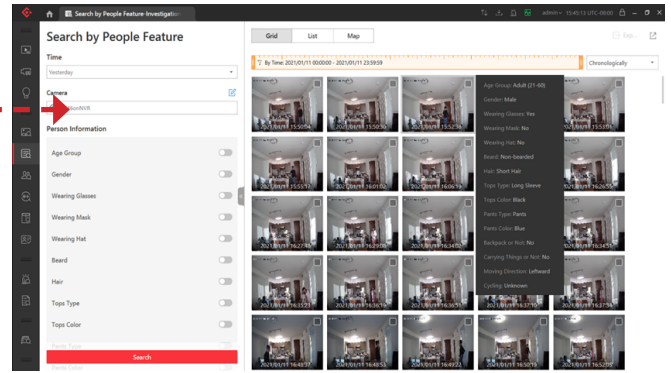
Weatherproof & Corrosion Protection

Cameras are water and dust resistant (IP67), vandal-proof (IK10), include an anti-corrosion coating, and are NEMA 4x rated for added weather protection (on -Y models).

Application Features

Classifies Target Objects & Performs Attribute Search:

DeepinView Series Cameras can detect multiple type of objects such as a person, a vehicle and license plates. Up to 15 different attributes can be quickly searched and identified, such as clothing color, age, and whether a person is wearing glasses or carrying an object. DeepinView cameras are fully supported by HikCentral Professional VMS to ensure effective video forensic search, while protecting individual privacy, to reduce incident response time and the cost of resolving investigations.

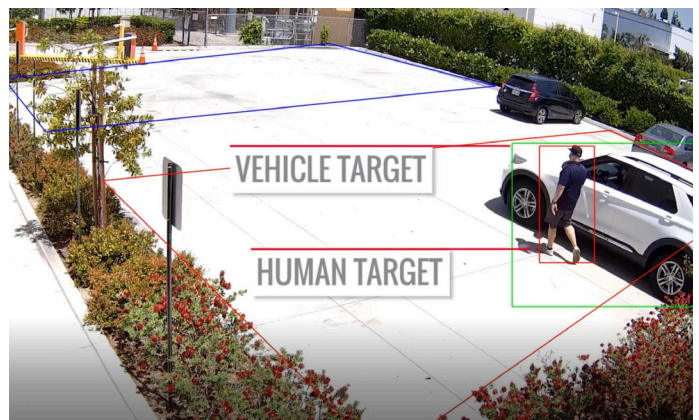


Exceptional False Alarm Reduction, Improved Alarm Monitoring Accuracy and Operational Efficiency: Improved DeepinView AI algorithms greatly reduce false alarms by more than 95 percent. The camera can detect human and vehicle overlapping and multiple targets overlapping. It also precisely detects a human with the detection bonding box, excluding the broader range of a human shadow. Set parameters to monitor specific areas more easily with alarms triggered by human only, vehicle only, or human and vehicle.

1st Generation



2nd Generation



Filtering out human shadows

Human and vehicle overlapping

Queue Management

DeepinView can detect the number of people waiting in line and the wait time for each individual, helping businesses better understand customer wait times, optimize staff levels, and enhance customer experience and satisfaction.



Attribute-Based People Counting and Area Density Control

This feature supports people counting when individuals enter and exit a specified area within a certain timeframe. The camera sends a threshold alarm if people density exceeds the predetermined threshold, alerting businesses to reduce occupancy to comply with social distancing and other safety requirements.



Single Door Standalone Camera Solution



Single Door Camera with I Series NVR

Camera Only: The DeepinView Camera-Only Density Control Solution supports a single entrance and exit scene. Basic numeric data displays the number of people on the premises.

Camera and I Series NVR: The DeepinView Camera + I Series NVR Density Control Solution supports a single entrance and exit scene and offers user-friendly, actionable real-time data. The maximum people density threshold is displayed on-screen, confirming the number of people allowed to enter, current people density within a store or building, and provides data with an on-screen green or red warning notification.

Hard Hat Detection

Enhance compliance and mitigate risk by identifying workers on a construction site that are wearing a hard hat. The cameras detect and identify those individuals wearing a hard hat versus those that are not to help maintain compliance and safety.

Applications



Retail Businesses



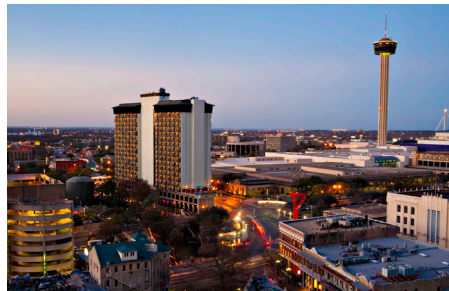
Casinos / Hotels



Construction Sites



Commercial Buildings



City Surveillance

Product Specifications & Accessories



Box Camera (lens not included)



Indoor Dome Camera



Outdoor Dome Camera



Outdoor Bullet Camera

MODELS	iDS-2CD7046G0-AP (4 MP)	iDS-2CD7146G0-IZS (4 MP) iDS-2CD7146G0-IZS8 (4 MP) iDS-2CD71C5G0-IZS (12 MP) iDS-2CD71C5G0-IZS8 (12 MP)	iDS-2CD7546G0-IZHS (4 MP) iDS-2CD7546G0-IZHS8 (4 MP) iDS-2CD75C5G0-IZHS (12 MP) iDS-2CD75C5G0-IZHS8 (12 MP) iDS-2CD7546G0-IZHSY (4 MP) iDS-2CD75C5G0-IZHSY (12 MP)	iDS-2CD7A46G0-IZHS (4 MP) iDS-2CD7A46G0-IZHS8 (4 MP) iDS-2CD7AC5G0-IZHS (12 MP) iDS-2CD7AC5G0-IZHS8 (12 MP) iDS-2CD7A46G0-IZHSY (4 MP) iDS-2CD7AC5G0-IZHSY (12 MP)
MEGAPIXELS	4 MP	4 MP/12 MP	4 MP/12 MP	4 MP/12 MP
SENSOR SIZE (PROGRESSIVE SCAN CMOS)	1/1.8"	4 MP: 1/1.8" 12 MP: 1/1.7"	4 MP: 1/1.8" 12 MP: 1/1.7"	4 MP: 1/1.8" 12MP: 1/1.7"
MIN ILLUMINATION (LUX)	4 MP: Color: 0.001 lux @ (f/1.2, AGC on); B/W: 0.0003 lux @ (f/1.2, AGC on) *Reference values only; actual values will depend on lens used	4 MP: 2.8 mm to 12 mm Color: 0.002 lux @ f/1.7, B/W: 0.0006 lux; 8 mm to 32 mm Color: 0.001 lux @ f/1.2 B/W: 0.0003 lux 12 MP: 2.8 mm to 12 mm Color: 0.009 lux @ f/1.2 B/W: 0.0009 lux; 8 mm to 32 mm Color: 0.0181 lux @ f/1.7; B/W: 0.00181 lux	4 MP: 2.8 mm to 12 mm Color: 0.002 @ f/1.2 B/W: 0.0003 lux; 8 mm to 32 mm Color: 0.002 lux @ f/1.7; B/W: 0.0006 lux 12 MP: 2.8 mm to 12 mm Color: 0.009 Lux @ f/1.2 B/W: 0.009 Lux with IR; 8 mm to 32 mm: Color: 0.0181 Lux @ f/1.7 B/W: 0.00181 Lux with IR	4 MP: 2.8 mm to 12 mm Color: 0.001 lux @ f/1.2, B/W: 0.0003 lux 8 mm to 32 mm Color: 0.002 lux @ f/1.7 B/W: 0.0006 lux 12MP: 2.8 mm to 12 mm Color: 0.009 lux @ f/1.2 B/W: 0.0009 lux; 8 mm to 32 mm Color: 0.002 lux @ f/1.7 B/W: 0.0006 lux
LENS (FOV H x V)	DC drive, CS mount sold separately	All: Motorized, autofocus 4 MP: 2.8–12 mm H FOV 114.5° to 41.8°, V FOV 59.3° to 23.6° 8 to 32 mm, H FOV 42.5° to 15.1°, V FOV 23.3° to 8.64° 12MP: 2.8 to 12 mm, H FOV 96° to 46.2°, V FOV 69.2° to 27.2°; 8 to 32 mm, H FOV 37.8° to 13.6°, V FOV 27.8° to 10.3°	All: Motorized, Autofocus 4 MP 2.8 mm to 12 mm, hFOV 114.5° to 41.8°, V FOV 59.3° to 23.6° 8 mm to 32mm, H FOV 42.5° to 15.1°, V FOV 23.3° to 8.64° 12MP: 2.8 mm to 12 mm: H FOV 96° to 46.2°, V FOV 69.2° to 27.2°; 8 mm to 32 mm: H FOV 37.8° to 13.6°, V FOV 27.8° to 10.3°	All: Motorized, Autofocus 4 MP: 2.8 mm to 12 mm: H FOV: 114.5° to 41.8°, V FOV: 59.3° to 23.6°, 8 mm to 32 mm: H FOV: 42.5° to 15.1°, V FOV: 23.3° to 8.64°,
DAY/NIGHT, BLC, WDR	4 MP: True, Yes, 140 dB	4 MP: True, Yes, 140 dB 12 MP: True, Yes, Digital	4 MP: True, Yes, 140 dB 12 MP: True, Yes, Digital	4 MP: True, Yes, 140 dB 12 MP: True, Yes, Digital

IR RANGE MAX (METERS)	--	2.8 mm to 12 mm: 98ft (30 m) 8 mm to 32 mm: 164 ft (50 m)	2.8 mm to 12 mm: 98 ft (30 m) 8 mm to 32 mm: 164 ft (50 m)	2.8 mm to 12 mm: 164 ft (50 m) 8 mm to 32 mm: 330 ft (100 m)
VIDEO COMPRESSION	Main stream: H.265+/H.265/H.264+/ H.264 Sub-stream/Third stream/Fourth stream/Fifth stream/custom stream:H.265/H.264/MJPEG			
MAX IMAGE RESOLUTION (PIXELS) & FRAME RATE	4 MP: (2560 x 1440), 30	4 MP: (2680 x 1520), 30 12 MP: (4000 x 3000), 20	4 MP: (2680 x 1520), 30 12 MP: (4000 x 3000), 20	4 MP: (2680 x 1520), 30 12 MP: (4000 x 3000), 20
AUDIO INPUT/OUTPUT	1 line in, 1 line out	1 line in, 1 line out	1 line in, 1 line out	1 line in, 1 line out
ALARM INPUT/OUTPUT	2 inputs, 2 outputs	1 input, 1 output	1 line in, 1 line out	2 inputs, 2 outputs
INTELLIGENT FUNCTIONS (DEEP LEARNING ALGORITHM)	Multi-target-type Detection & Attribute Search; Area People counting & Density Control; Queue Management; Perimeter Protection, Hard Hat Detection	Multi-target-type Detection & Attribute Search; Area People counting & Density Control; Queue Management; Perimeter Protection, Hard Hat Detection	Multi-target-type Detection & Attribute Search; Area People counting & Density Control; Queue Management; Perimeter Protection, Hard Hat Detection	Multi-target-type Detection & Attribute Search; Area People counting & Density Control; Queue Management; Perimeter Protection, Hard Hat Detection
RATINGS	UL Listed	IK10, UL listed	IP67 IK10, UL listed, -Y model: NEMA 4X (NEMA 250-2018)	P67, IK10, UL Listed, -Y model: NEMA 4X (NEMA 250-2018)
OPERATING TEMPERATURE RANGE	-30° to 60°C (-22° to 140° F)	-30° to 60° C (-22° to 140° F)	-40° to 60° C (-40° to 140° F)	-40° to 60° C (-40° to 140° F)
POWER REQUIREMENTS (MAX)	12V DC, max 12W 24V AC, max 12W PoE (802.3af), max 12 W	12 VDC, max 9.96 W 24 VAC, max 12 W PoE (802.3af), max 12 W	With extra load: 12 VDC, max 13.9 W; PoE (802.3at): 13.9W "With extra load" means that an extra device is connected to and powered by the camera	12 VDC, max 16.0 W PoE: (802.3at) max 18.0 W
BRACKETS	WBS,PP2, CBH, CHB-HBW, CHB-HB	WML,PC130, CPM, CPME, CM,PM, RCM-1,AB135	For iDS-2CD75xxG0-IZHS: WML, PC155, CPM, CM, PM, SRSL, SRS. For DS-2CD75xxG0-IZHSY: DS-1473ZJ-155-Y,DS-1471ZJ-155-Y,DS-1475ZJ-Y,DS-1476ZJ-Y	For iDS-2CD7AxxG0-IZHS, CM1, PM1; For iDS-2CD7AxxG0-IZHSY, DS-1476ZJ-Y,DS-1475ZJ-Y
STANDARDS	Complies with ONVIF (PROFILE S, PROFILE G, PROFILE T), FCC (47 CFR Part 15, Subpart B); CE-EMC (EN 55032: 2015, EN 61000-3-2: 2014, EN 61000-3-3: 2013, EN 50130-4: 2011 +A1: 2014), CE-RoHS (2011/65/EU); WEEE (2012/19/EU); Reach (Regulation (EC) No 1907/2006) Contact factory for additional details.			

Hikvision USA Inc.
18639 Railroad Street
City of Industry, CA 91748

Contact Information
Toll-Free: +1 866-200-6690 (U.S. and Canada)
Phone: +1 909-895-0400
Email: sales.usa@hikvision.com
us.hikvision.com

Connect with us: [Twitter](#) [Facebook](#) [LinkedIn](#) [YouTube](#) [Instagram](#)