



# HIKVISION HEATPRO BI-SPECTRUM CAMERAS

## Professional Protection Made Simple

Dual Thermal & Optical Modules for Better Perimeter Protection, Early Fire Detection, and Superior Adaptability to Harsh Environments



Hikvision's HeatPro Bi-Spectrum Thermal Series makes advanced protection simple. Equipped with dual thermal and optical modules in one camera, HeatPro excels at perimeter protection, early fire detection and temperature monitoring, plus it hosts superior adaptability and visibility in harsh environments. The series is available in a turret and bullet form factor.

Hikvision's HeatPro Thermal-Optical Camera Series delivers professional perimeter protection with unparalleled accuracy and highly accurate fire detection. Competitively priced, this camera line meets budget and performance for a variety of residential, commercial and industrial applications.

## Hikvision Heat Pro Thermal Cameras

Professional Protection Made Simple

Darkness & Backlight  
Adaptability

Upgraded thermal  
resolution to  
**256x192**

Early **FIRE** prevention

**60%**  
Longer detection range  
with target classification

## EFFICIENT PERIMETER DETECTION WITH TARGET CLASSIFICATION

### Distinguish Humans vs. Vehicles

Thermal camera technology senses the heat emitted from objects in the environment to provide superior visibility and image stability. It also enables more effective detection of humans or vehicles moving around a defined area.

### Detect Individuals within a Group

When people gather into groups, the HeatPro Series Thermal Cameras can still accurately identify each individual.

### Filter False / Unwanted Alarms

Enhanced VCA with better performance filter false and unwanted alarms caused by leaves, branches, and animals.

## BETTER VISIBILITY WITH SUPERIOR ENVIRONMENTAL ADAPTABILITY

### Overcome Harsh Weather & Environments

Thermal video and imaging are not affected by shadows, darkness, bright lights, smoke, fog or rain. This enhances visibility in a wide range of challenging environments that optical cameras are unable to display clearly. Enhancements to the algorithms help the camera improve accuracy and reduce false alarms.

## SHORT RANGE PERIMETER PROTECTION WITH STROBE LIGHT AND SPEAKER

The built-in white strobe light and speaker with automated voice alarms can be used to deter, warn or instruct people.

## EASY-TO-USE VCAs

Simpler and faster deployment for users with setup in less than a few minutes. The HeatPro series comes equipped with VCAs such as intrusion detection and line crossing detection based on advanced deep learning algorithms to reduce false alarms.



1. Enable VCA



2. Draw a Detection Area



3. Set Human/Vehicle /All as the Target

## REDUCE COSTS WITH EARLY FIRE DETECTION & TEMPERATURE MONITORING

Thermal monitoring can be used for advanced, early fire detection and warnings as well as changes in temperature that exceed a specified threshold. This can greatly reduce liability and costs associated with fires and other damaging incidents at locations such as warehouses and industrial facilities. Notification alarms will be sent when a specific threshold is met or exceeded, providing early warnings 24/7, even during hours when a business is closed. In addition, fork lift filter algorithms and anti-burning prevent many false alarms.



Early Detection and Warning



Temperatures Visualized

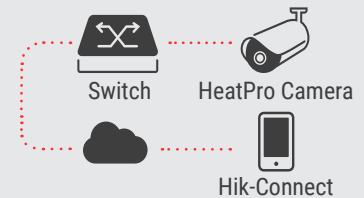


Support for Flexible Rules & Alarms

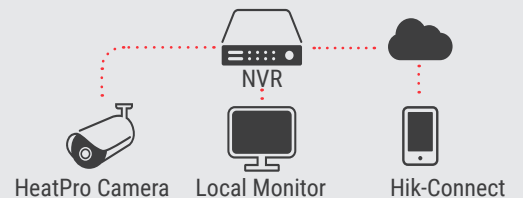
### Flexible Product Combinations

HeatPro Series Thermal Cameras combine with Hikvision's various products to meet diverse needs.

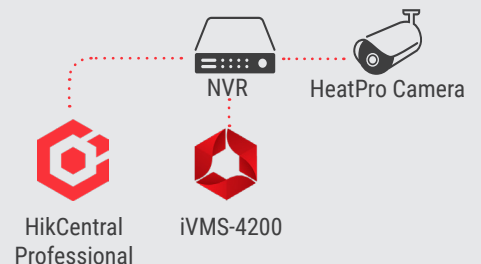
#### Residential Solution



#### Commercial Solution

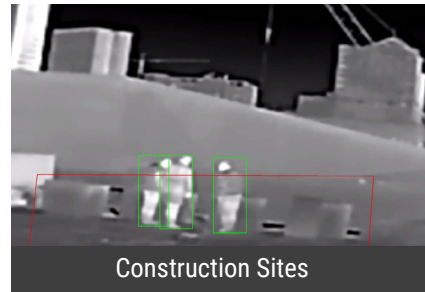
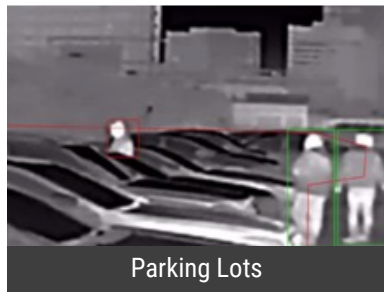


#### Large-Scale Solution

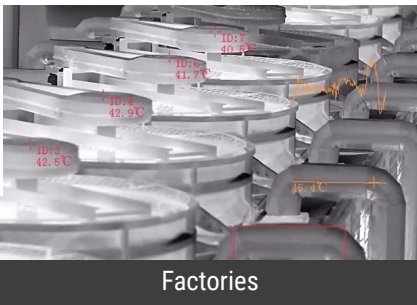


## APPLICATIONS

### Perimeter Defense



### Fire Prevention



## PRODUCT SHOWCASE

- Resolution: 256 x 192 for Thermal, 4 MP for Visible Light
- VCA: Line Crossing, Intrusion Detection, Region Entrance, Region Exit
- Temperature Accuracy:
  - Max  $\pm 2^{\circ}\text{C}$  /  $3.6^{\circ}\text{F}$ ,  $\pm 2\%$  for T model
  - Max  $\pm 8^{\circ}\text{C}$  /  $14.4^{\circ}\text{F}$  for Regular Model
- Temperature measurement range:
  - $-20^{\circ}\text{C}$  to  $550^{\circ}\text{C}$  ( $-4^{\circ}\text{F}$  to  $1,022^{\circ}\text{F}$ ) for T Model
  - $-20^{\circ}\text{C}$  to  $150^{\circ}\text{C}$  ( $-4^{\circ}\text{F}$  to  $302^{\circ}\text{F}$ ) for Regular Model
- Built-in strobe light and audio alarm

#### Bi-Spectrum



#### Turret

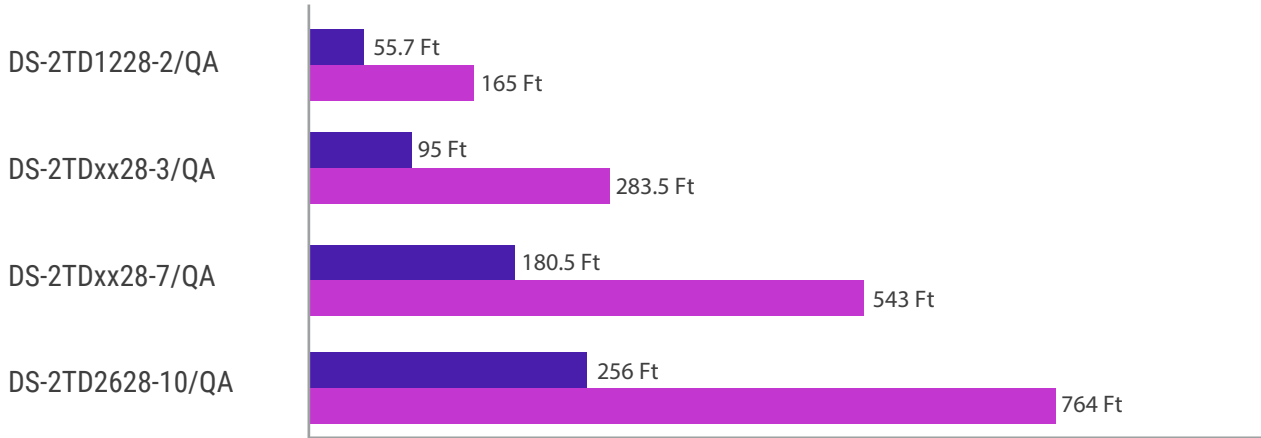
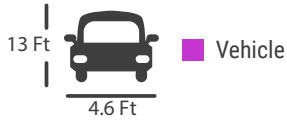
DS-2TD1228-2/3/QA  
DS-2TD1228T-2/3/QA,

#### Bullet

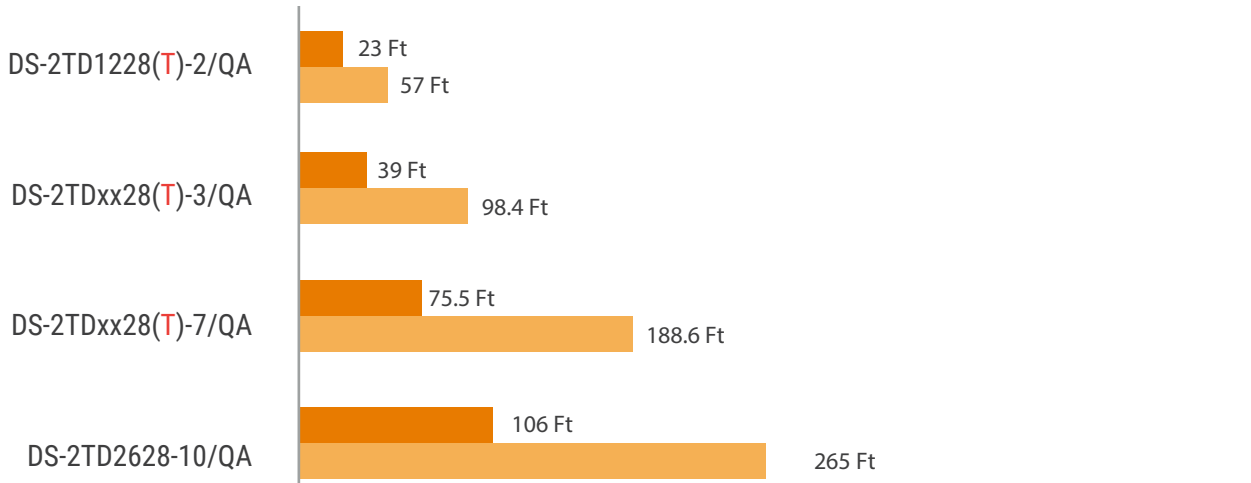
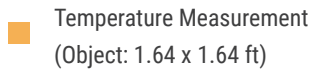
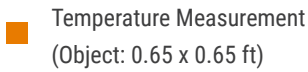
DS-2TD2628-3/7/10/QA  
DS-2TD2628T-3/7/QA

# EFFECTIVE COVERAGE

## VCA Performance



## Fire Prevention



FOCUS ON YOUR SUCCESS

**HIKVISION**

Connect with us: [Twitter](#) [Facebook](#) [LinkedIn](#) [YouTube](#) [Instagram](#)