

**FIRST  
FULL COLOR  
PRO KIT**

## **NEW PREMIUM COLORVU CAMERA KIT:**

**8-CHANNEL POE NVR AND 6 COLORVU  
CAMERAS FOR GRAB-AND-GO EXCEPTIONAL  
NIGHT VISION AND ENHANCED SECURITY**

### **GAIN BETTER NIGHT VISION IN LOW LIGHT ENVIRONMENTS WITH ADDED CONVENIENCE**

Hikvision's newly released ColorVu IP Bundle Kit upgrades the traditional IR cameras to ColorVu cameras, which not only conveniently provides a grab and go experience, but also allows customers to enjoy the 24/7 vivid, color images. These are provided by ColorVu's f1.0 large aperture, high-sensitivity sensor, and advanced ISP imaging technology for full color images around the clock.



### **1 COLORVU IP BUNDLE KIT OFFERS A WIDE ARRAY OF BENEFITS:**

- Captures high-quality, full-color video 24/7 to protect people and property at night with the same sharp rendering as in daylight.
- Grab and go, this bundle kit includes 6 plug-and-play ColorVu IP cameras, 8-ch 4K NVR, and a pre-installed 2 TB HDD. No need to worry about camera selection.
- Plug-and-play, no need for complicated configurations.
- 4 MP high definition images to see more details.
- NVR supports 4K resolution with 8 ports and built-in independent PoE network interfaces.

### **2 LOW LIGHT PERFORMANCE**

#### **SUPPLEMENTAL LIGHT ON**

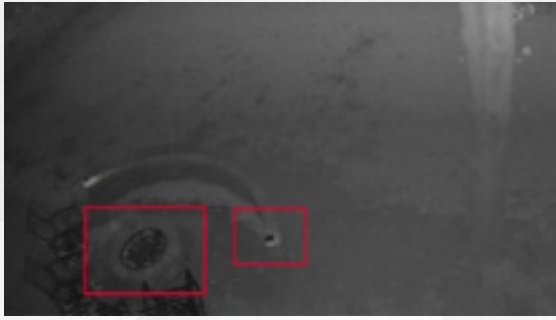


**Conventional Camera**



**Camera with ColorVu**

## SUPPLEMENTAL LIGHT OFF



Conventional Camera



Camera with **ColorVu**

### 3 PRODUCT SHOWCASE



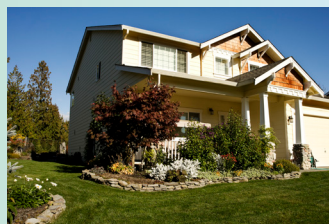
#### EKI-K82T46C

- Six 2.8mm ColorVu IP Turret Cameras provide high-quality 4 MP 24/7 color images
- 120 dB WDR delivers clarity when there are both dark and light areas on the screen
- 8 channel 4K NVR with 2 TB pre-installed HDD for video recording
- IP67 for indoor and outdoor environments

### 4 APPLICATIONS



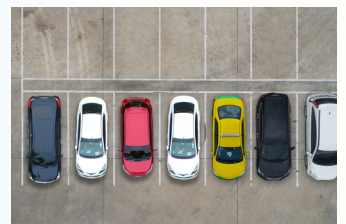
Retail Stores



Residences



Office Buildings



Parking Lots



For more information, please scan the QR Code.

FOCUS ON YOUR SUCCESS

**HIKVISION**

Connect with us: [Twitter](#) [Facebook](#) [LinkedIn](#) [YouTube](#) [Instagram](#)