



HikCentral Professional

Versatile Security in One Platform

HIKVISION[®]





What is HikCentral Professional?

HikCentral Professional is Hikvision's software platform for integrating and managing security systems designed to meet a variety of security challenges on a single platform. With HikCentral Professional, multiple individual systems are handled with ease, such as video security, access control, security alarms, and more, as well as explore cross-system functionalities. Daily operations become more efficient while the protection of people and property are improved all around. Users of all kinds are making smarter decisions integrating this platform.

Keep reading to see how HikCentral Professional can boost operations in your unique situation.

System Architecture

01

Light and efficient

HikCentral Professional's lightweight architecture features reduced consumption of system resources. It is capable of managing multiple systems of varying sizes with consistent efficiency.

02

Unified and flexible

The platform supports combining various application plug-ins under a unified, on-demand architecture for collaboration across business segments. What's more, new plug-ins can be continually developed to meet new business needs.

03

Integrated and open

This amazing platform is compatible with virtually all of Hikvision's products and their abundance of applications, including Deep-Learning based analytics and statistics. The platform's open architecture permits easy integration with third-party systems and hardware.

A variety of applications cover a broad range of business needs



Diverse business applications to choose from

All major security needs are covered through a variety of core-security modules including video, access control, visitor, attendance, vehicle, mobile monitoring, alarm detection, intelligent analysis, digital signage, and maintenance. Whatever your situation, you will find what you need right here.

A unified security system that enhances management operations

All applications connect in an interactive way to build a truly unified architecture enhancing your operational efficiency. For example - an intrusion alarm plus access control combined with video verification, or visitor access with pre-registration of vehicles, and much more.



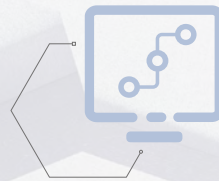
Key Benefits

Streamlines operations and management

With situational awareness powered by informative dashboards and interactive E-maps, optimal approaches advised by operation wizards, and the flexibility of a user-defined control panel, you will be making smarter decisions fluidly and efficiently on day one.



01



02

Simplifies deployment and maintenance

With minimum system requirements – Intel i3 CPU and 8 GB RAM – you'll have your security platform deployed with limited hardware costs. Moreover, maintenance of the entire system is much easier with visualized health monitoring in real-time.

Scales as business grows

By flexible and scalable architecture, the platform can be scaled as your business needs evolve. You can expand it from a small 32-channel, 8-door system to an ultra-large-scale system that links up to 100,000 channels of equipment (under the RSM mode).



Promises security and reliability

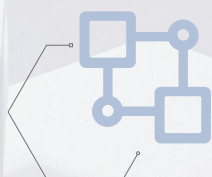
Get a new sense of security with advanced system protection using constant data encryption and privacy, along with comprehensive redundancy and disaster recovery mechanisms.



05



03



04

Facilitates hassle-free integration

Through an open architecture design and a series of highly adaptive OpenAPI interfaces, you will enjoy hassle-free integration with a wide range of third-party systems such as ARCs and payroll systems.



User-centric design ensures personalized and optimized experience

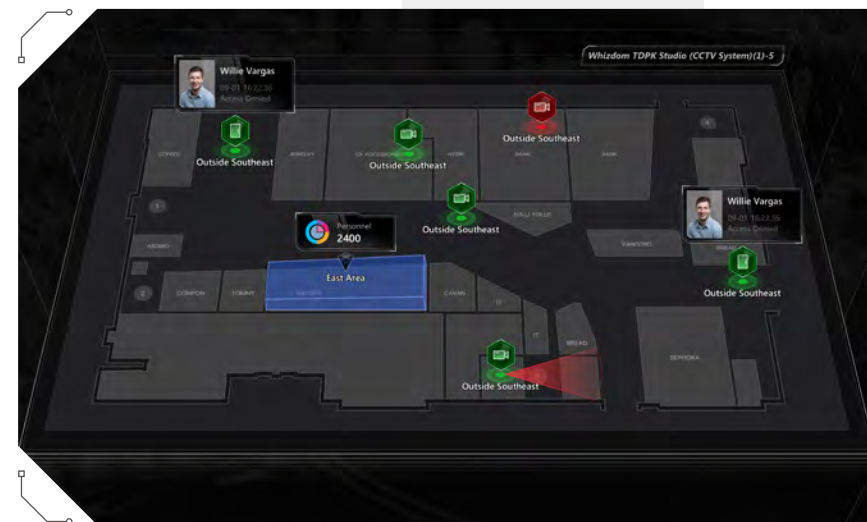


Personalized security management

Whatever your role – manager, decision-maker, HR, receptionist, security, or maintenance staff – HikCentral Professional will help you get up and running quickly with pre-set modes. Alternatively, users can customize their systems with the applications they need to create a personal control panel for specific duties and routines, empowering staff with custom, optimized management approaches.

Visualized systems, data, and maintenance

Data collected from various applications becomes easy to understand with HikCentral Professional's dynamic reports and helpful, intuitive dashboards. The dashboard supports creating a personalized display for the information you care about the most, contributing to smarter decision-making with advanced situational awareness.



Interactive E-Maps

Interactive E-Maps give users an instant, dynamic view of multiple sites and the status of various devices simultaneously, as well as a shortcut to handle events and alarms directly onboard. It enables management and security staff to get accurate and timely notifications while responding to incidents promptly, enhancing day-to-day operational efficiency.

Light, but powerful software Simplifies installation and maintenance



Easy installation

Minimum system requirements for HikCentral Professional are an i3 CPU and 8 GB of RAM.

Easy maintenance

System health status is displayed visually in real-time, contributing to faster notifications and locations of abnormal situations. What's more, all system historical records are conveniently trackable.

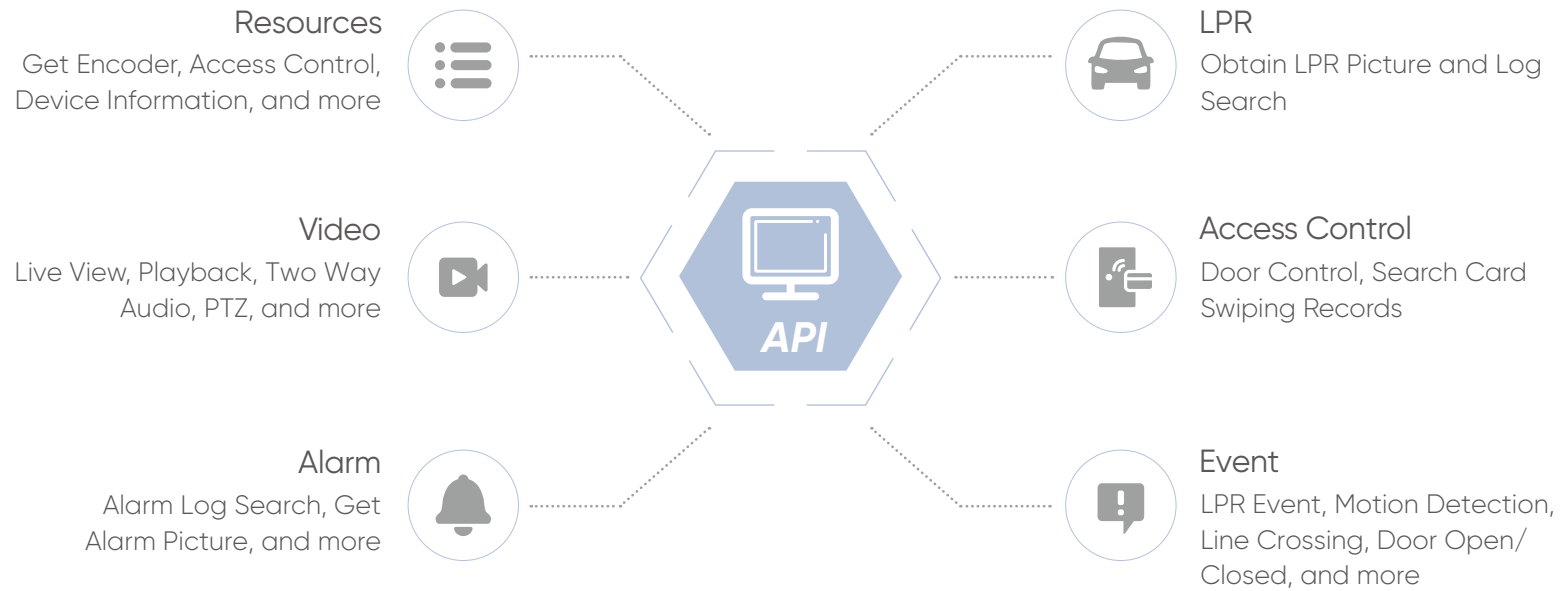




Open system architecture allows easy and convenient integration

Open API

Collaborative, goal-oriented development creates the most useful and customizable applications. Hikvision has created an open Software Development Kit for innovated systems to meet any particularized demand.



Video

Efficient and comprehensive video surveillance

Quickly save scenes and efficiently complete daily monitoring. Users can customize their personal views to have a holographic perception of all videos, maps, and data. Specified views can be opened in one minute for quick previews and playbacks.

Low bandwidth network adaptability

Smooth Streaming automatically adjusts bitrate and resolution between clients and NVRs, or IP cameras, according to real-time network conditions.

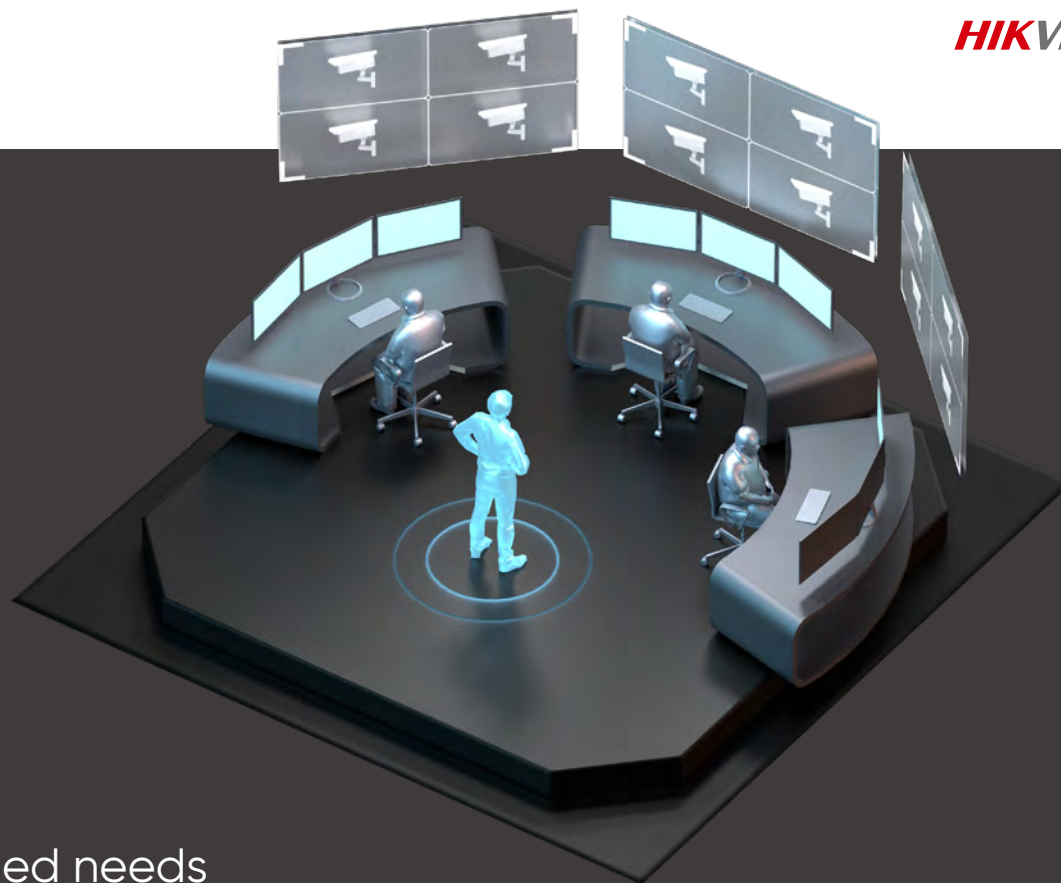
Quick and convenient search and playback

- Users will enjoy the quick incident search and location using thumbnails, supporting sub-stream, transcoded, and frame-extracting playback.
- Convenient event search is based on tags and VCA search analysis, as well as key attributes of vehicles and persons.
- A quick go-through of video based on event types reduces potential risks by locating high-frequency events in critical areas.

VCA search

"After-the-fact" VCA search provides convenient analyses including motion analysis, line crossing detection, intrusion detection, and more.





Video export as evidence

- Supports merging several clips into one downloadable video file, making management workflow simpler and easier.
- File export is available in various formats including exe., avi., mp4, and more.

Reliable storage satisfies diversified needs



Flexible Storage

HikCentral Professional offers event-triggered video recording and playback, along with automated video backup during idle periods. Channel-based video and image storage can be configured as well.



Multiple Storage Media

Video and images can be stored on various media storage platforms such as NVRs/DVRs, pStor, Hybrid SAN, and Cluster Storage Servers.



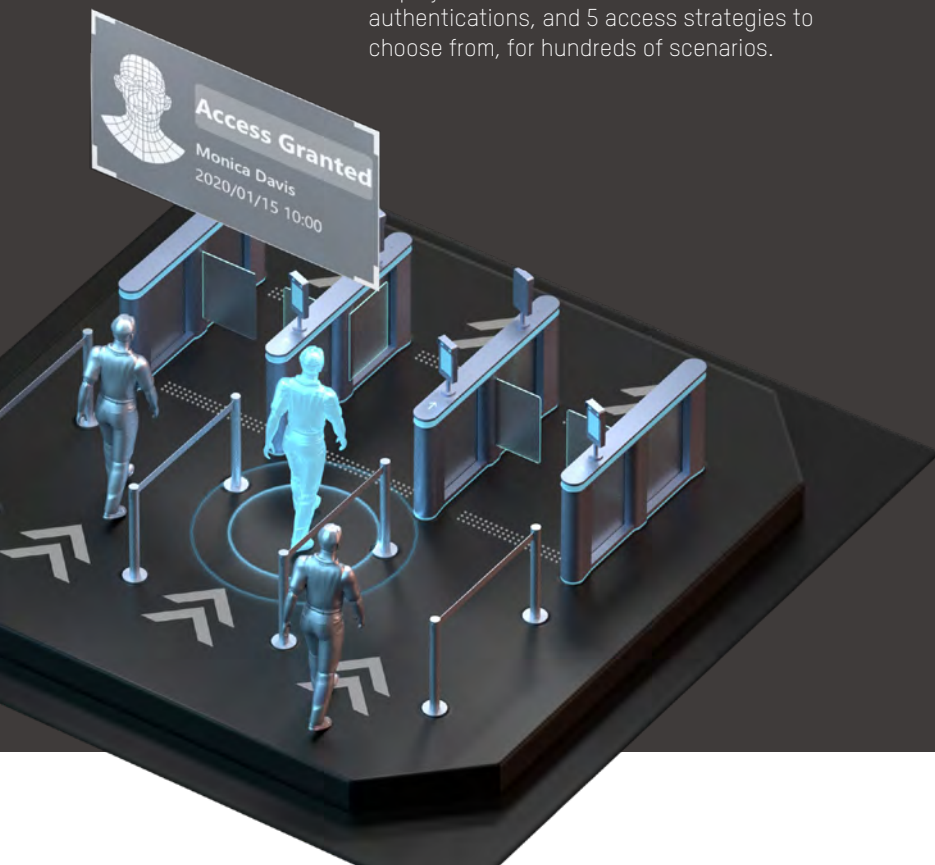
High Availability

HikCentral Professional features a fail-safe / high availability design with redundant remote, local backup, and scheduled copy-back, along with pStor cluster services, and NVR hot swapping.

➤ Access control

Comprehensive and flexible access management

Users get flexible, customized, and comprehensive access control systems for their employees and visitors with 5 credentials, 512 authentications, and 5 access strategies to choose from, for hundreds of scenarios.



Easy and convenient personnel management

Credentials are easy to assign to various groups of people with step-by-step guidance. To register, employees can use their smartphone to scan a QR code generated by HikCentral Professional and register their information remotely; they will receive access permission instantly.

What's more, with HikCentral Professional, it is easier than ever to enter employee information and design their badge with several unique styles and layouts to choose from. With a few clicks, users can enter their information and print employee badges with all necessary access permissions.

Quick alarm handling

When incidents occur, the access control system will trigger IP cameras to capture images and record video. Security staff can check the video in real-time and take any necessary action.

Emergency mustering

Instant response to emergencies

When emergencies occur, HikCentral Professional can automatically, or manually, trigger to start the emergency state with just one click.

Enhanced evacuation

The system will trigger IP speakers for a cycled broadcast of evacuation messages and keep all doors open along the escape route, helping personnel quickly assemble at muster points.



Augmented security levels for everyone

At the muster points, security staff can efficiently count and verify everyone's safety. If someone is missing, they can check the most recent locations where stranded personnel swiped ID cards.



▶ Time & attendance

Flexible rule setting

Users can schedule attendance rules for normal, hourly, multiple, or temporary shifts based on specific scenarios for offices, factories, stores, and more.

Various attendance reports

Diverse attendance reports and customizable templates are available. Users can also create personalized report templates based on their needs. Reports can be exported in Excel, PDF, and CSV formats, among others.

Easy integration with payroll systems

HikCentral integrates widely with third-party software systems such as salary calculation systems, meeting complex demands in a variety of businesses.

▶ Visitor

Improved visitor experience

A receptionist can quickly identify certain visitor groups like VIPs via the Watchlist function in HikCentral Professional, and print visitor vouchers with personalized designs to enhance the visitor experience.

Manage guest visits securely

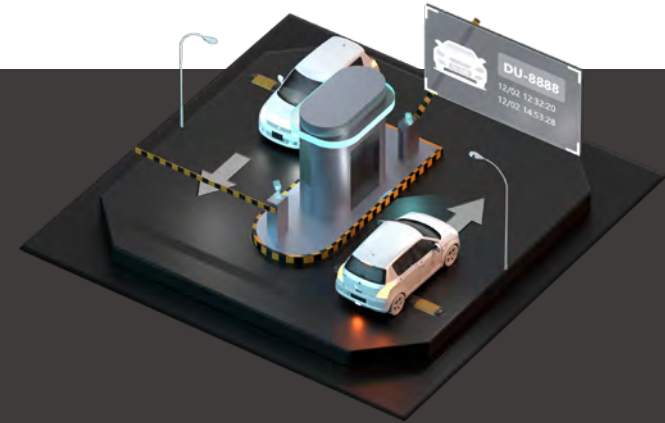
Visitors are only allowed to enter areas where they are given access. Their visiting history is also traceable, adding to security levels.



▶ Video intercom

- Serves as a centralized platform to manage the video intercom system
- Supports configuring related devices and setting rules for device interaction
- Pushes calls from the indoor or outdoor stations to the management staff
- Supports sending notifications to indoor stations in batches

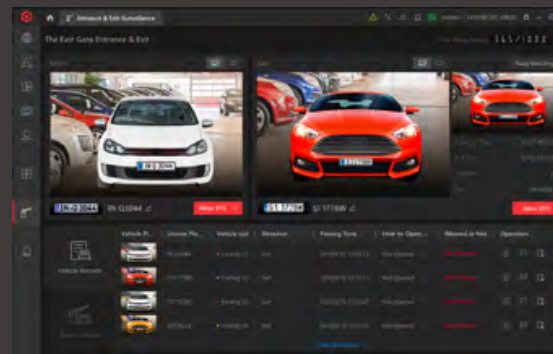
Vehicle



Intelligent parking system

Vehicle entrance & exit management

HikCentral Professional supports both self-service cards or ticket dispensers and License Plate Recognition (LPR) cameras to customize vehicle entry rules, and check entrance & exit records.



Statistics and reports

HikCentral Professional enables intuitive and efficient parking operation analysis and helping management staff analyze operations.



➤ Mobile monitoring

Efficient mobile monitoring for quick response

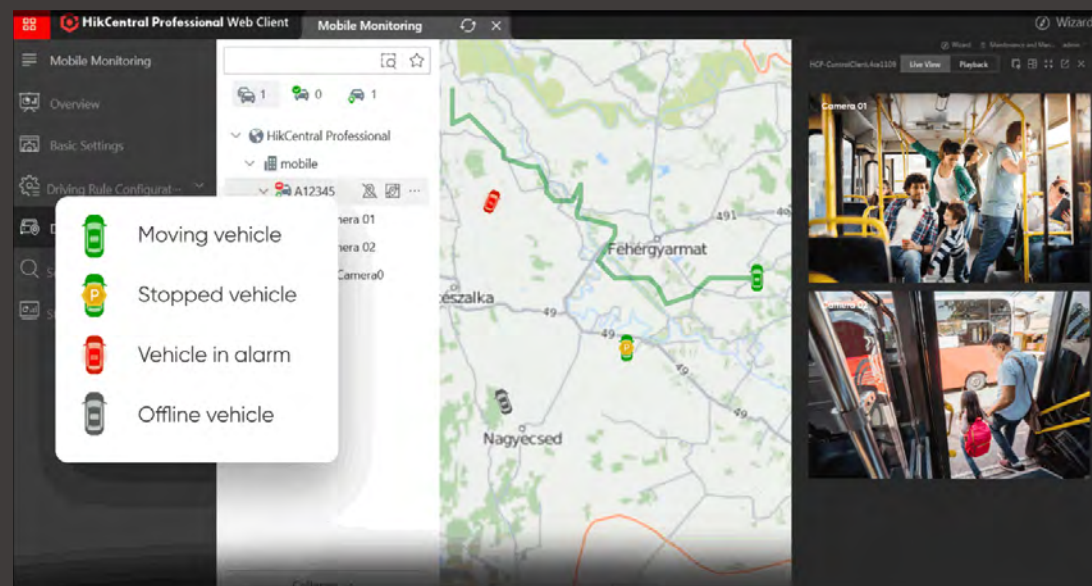
HikCentral Professional can serve as a unified platform for mobile security management including real-time GPS positioning and tracking, abnormal driving behavior analysis, and more, keeping users alerted of alarm notifications in a timely manner.

Flexible and convenient video management solution

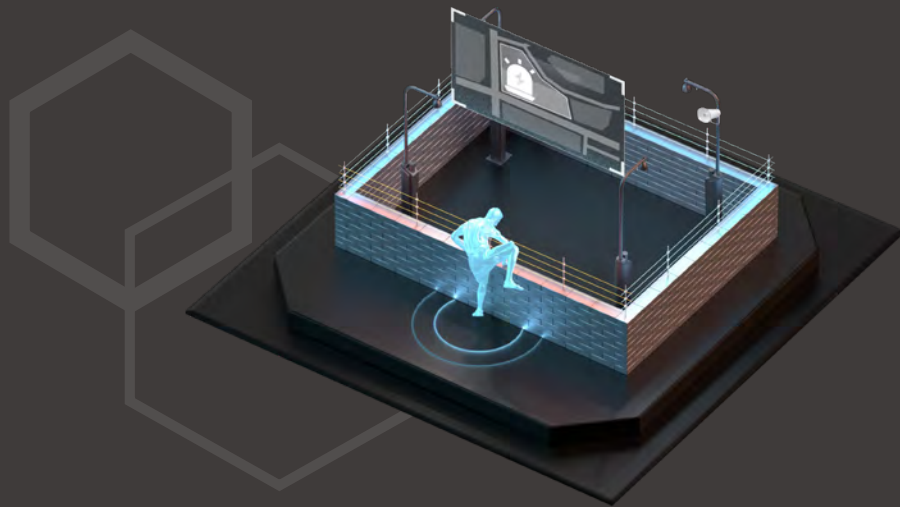
Users get flexibility with viewing the live feed store and play video clips from the mobile video recorders on vehicles from the command center, upload event videos under the mobile network, and back up videos using Wi-Fi.

Customized reports for enhanced operational efficiency

With a diversity of report templates to choose from, users can effectively gain insights on vehicle driving conditions like distance, time, and much more, helping them better schedule and optimize operations.



▶ Alarm detection



Alarm sources

HikCentral Professional can centrally manage various alarm sources such as video, access control, alarm panels, and third-party alarm inputs.

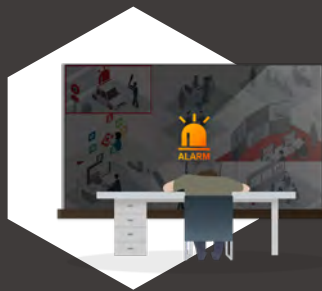
Alarm center

- Real-time display of all kinds of alarms
- Linked videos and locations will be displayed automatically when an alarm is selected

Alarm linkage

- Flexible linkage with access control devices, cameras, and more can be configured
- Supports automatic audio alarms to deter unlawful entry while linking with IP speakers
- Displays the status of alarm-triggering devices and quickly locates devices that have triggered alarms

Combined alarm



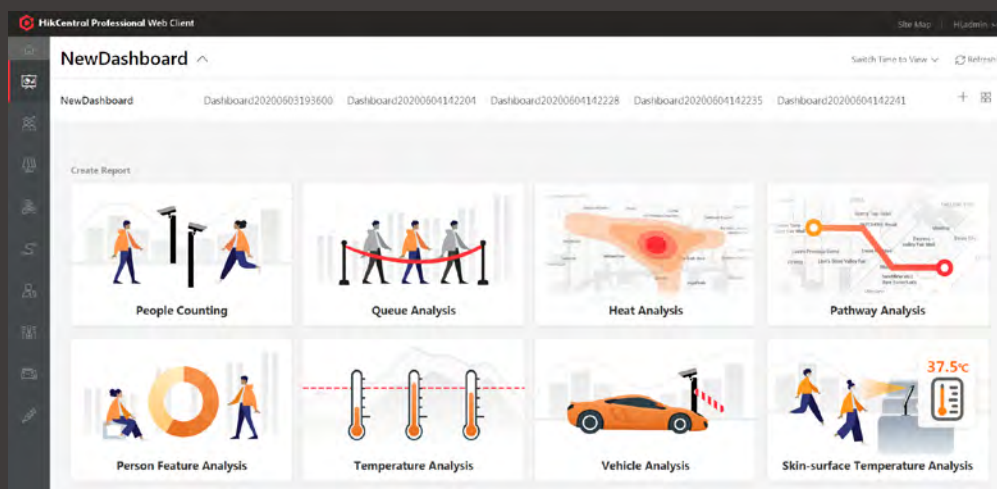
A combined alarm enables arming or disarming to promote flexibility and accuracy of alarm management. For example, users may employ composite I/O signals and motion detection events by installing infrared beams, effectively reducing the false alarm rate.

Alarm escalation



Alarm escalation takes place when the primary operator does not respond. An unprocessed alarm will be forwarded and escalated to upper-level management when the original operator ignores it.

▶ Intelligent analysis



Intelligent analysis dashboard

- The video-based intelligent analysis dashboard enables flexible and extensible digital applications
- Includes smart commercial analysis like flow, attribute, wait-time, and visitor trend analyses, as well as vehicle management and temperature measurement

▶ Digital signage



Flexible program design and release

- Eight types of pre-installed program templates are ready for use, saving you time and money upon installation
- All programs are created visually, making advertisement creation, temperature screening, flow control, attendance, and other functions easier and more efficient

HikCentral Professional Versatile Security in One Platform

Connect with us:      | www.hikvision.com

©2022 Hikvision USA Inc. and Hikvision Canada Inc. All rights reserved. Hikvision is a registered trademark of Hikvision Digital Technology Co., Ltd. in the US, Canada and other countries. All other trademarks, service marks, and product or service names are trademarks or registered trademarks of their respective owners. Product specifications and availability are subject to change without Notice.

February 2022

HIKVISION[®]
WWW.HIKVISION.COM