

DS-1299ZJ

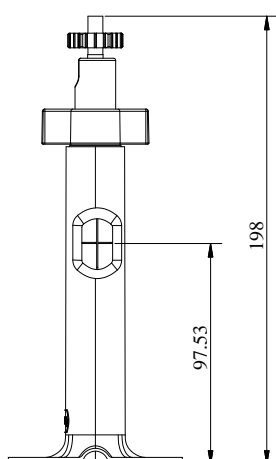
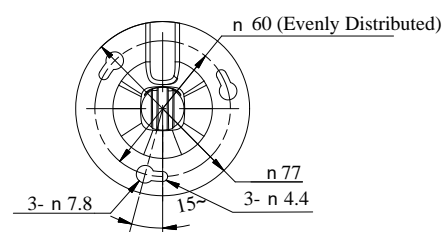
Pendant Mount

Features

- Aluminum alloy material with surface spray treatment
- Design with a built-in cable hole
- Adjustable angle for installation



Dimension



Unit: mm

Available Model

DS-1299ZJ

Parameters

Parameters	Model
	DS-1299ZJ
Appearance	Pendant Mount
Material	Hikvision White
Dimension	Aluminum Alloy
Weight	Ø77 mm × 198 mm (3.03" × 7.8")
	Approx. 200 g (0.44 lb.)

Notes

- The bracket should be installed on flat wall.
- Waterproof rubber is necessary for outdoor application.
- The wall must be capable of supporting over 3 times as much as the total weight of the camera and the bracket.
- The maximum load capacity of the bracket is 2kg.