

HIKVISION®

Office Security
Applications



Contents



Requirement Analysis



Solution Introduction



Application Summary



Product Cases



Requirement Analysis



Requirement Trends

Higher Security Level

- Lack of 7*24h video surveillance, especially in the darkness environment at night
- Hard to trigger alarm in real time when valuable assets are stolen

Higher Operation Efficiency

- Low efficiency of daily inspection by security guards
- Low efficiency of device maintenance because large amount

Better User Experience

- Poor experience of employees

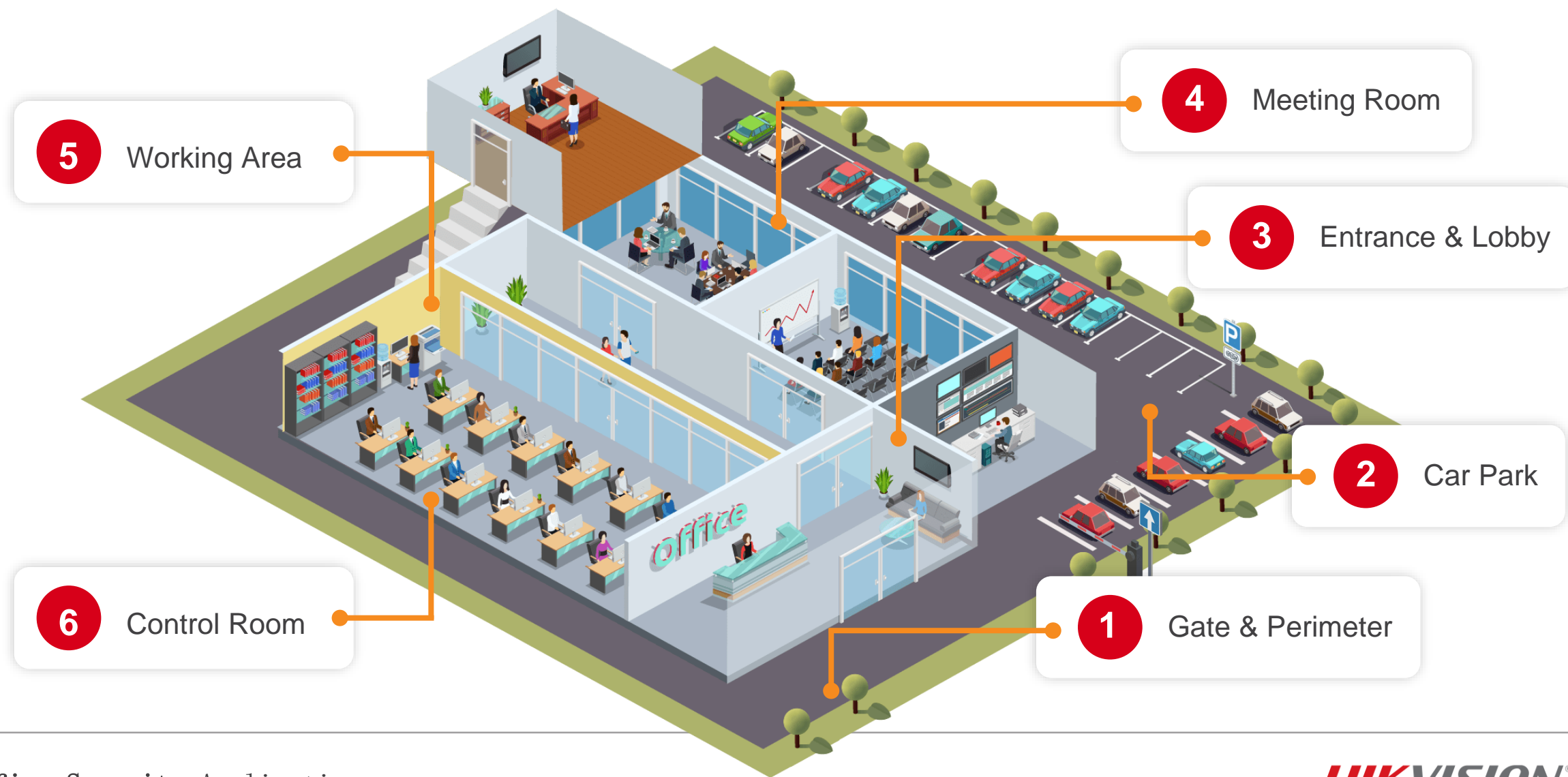


Solution Introduction

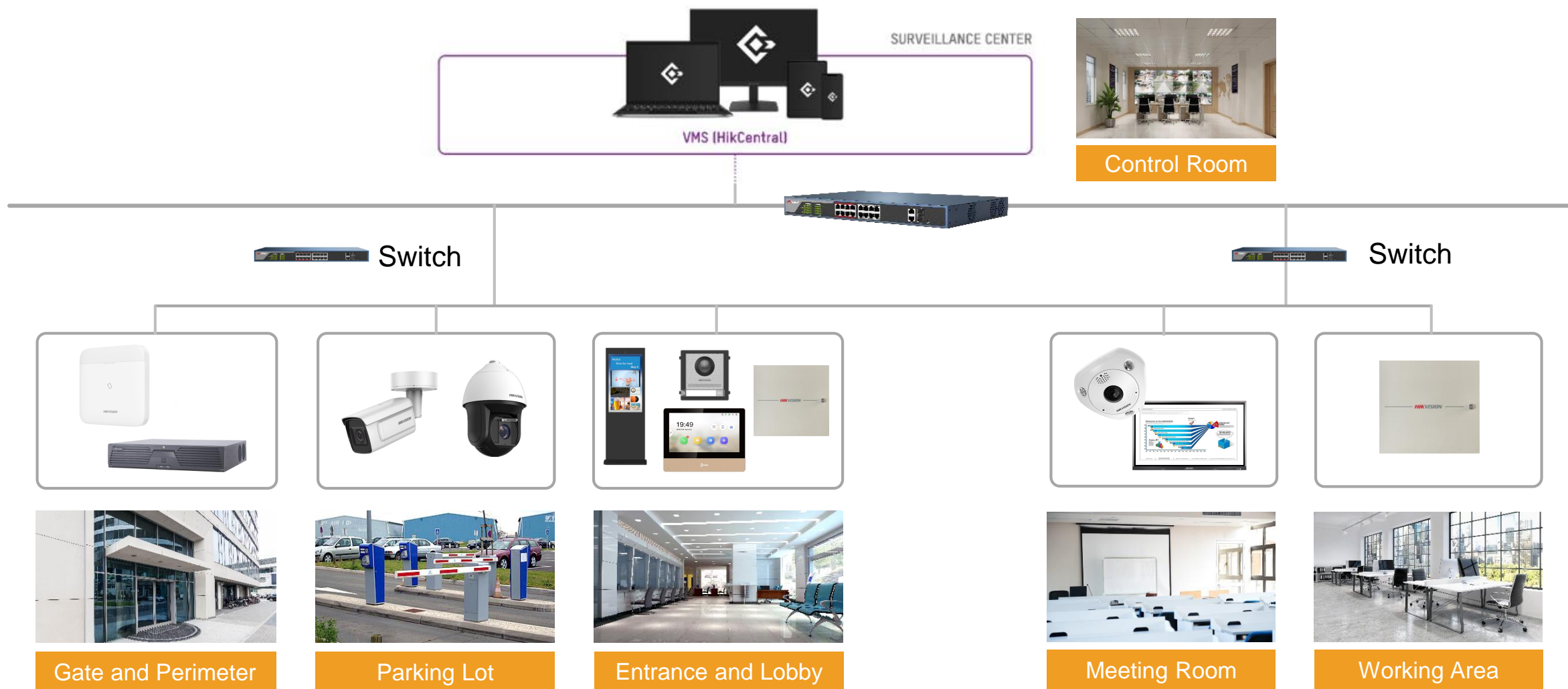


HIKVISION®

Application Scenarios



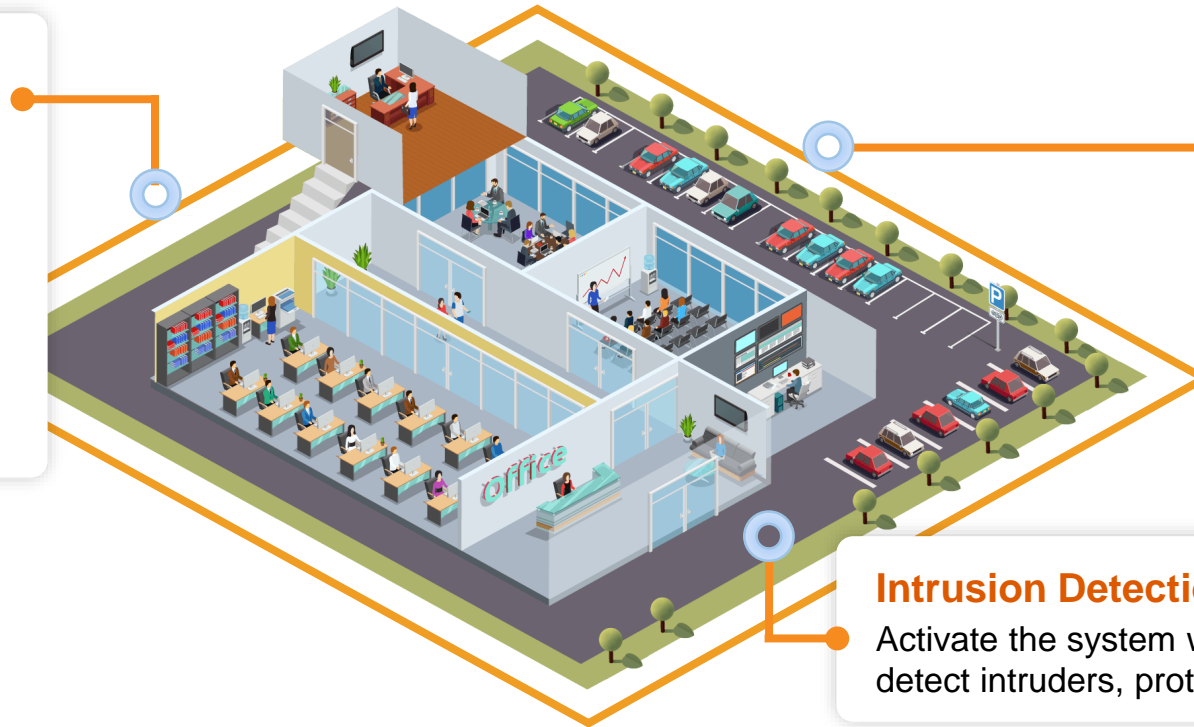
System Architecture



Gate & Perimeter

Perimeter Protection

Traditional video based intrusion detection is subject to various types of interference greatly, like birds flying by, cats/dogs running by, light changing, trees shaking, shadow moving, etc., resulting in high false rate. False alarm reduction technology can analyze the intrusion factor with AI technology, reducing false alarms and only leave real alarms caused by human and vehicle, thus raising alarm accuracy.



Intrusion Detection

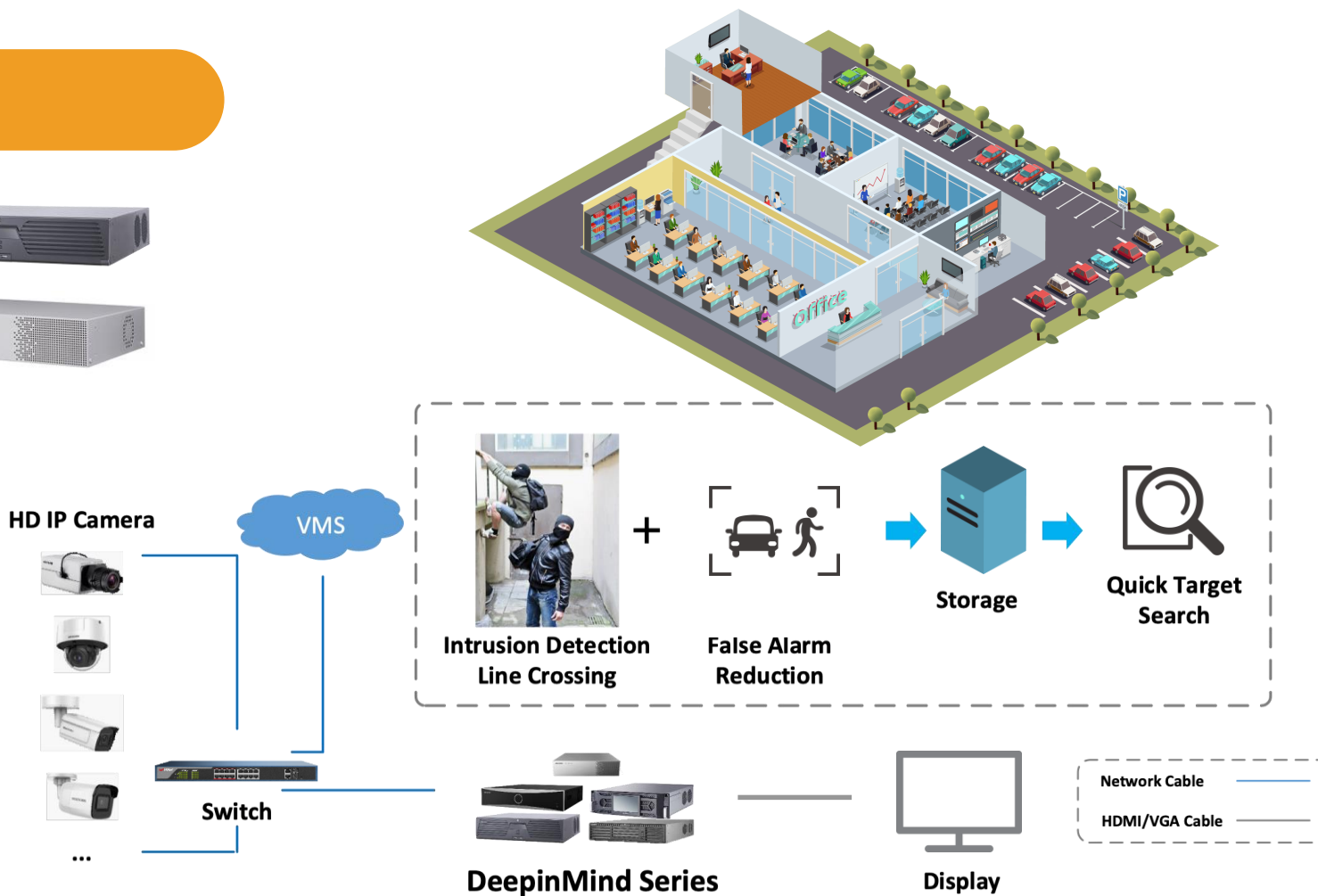
Activate the system when off work to detect intruders, protecting the valuables.

Gate & Perimeter-Perimeter Detection

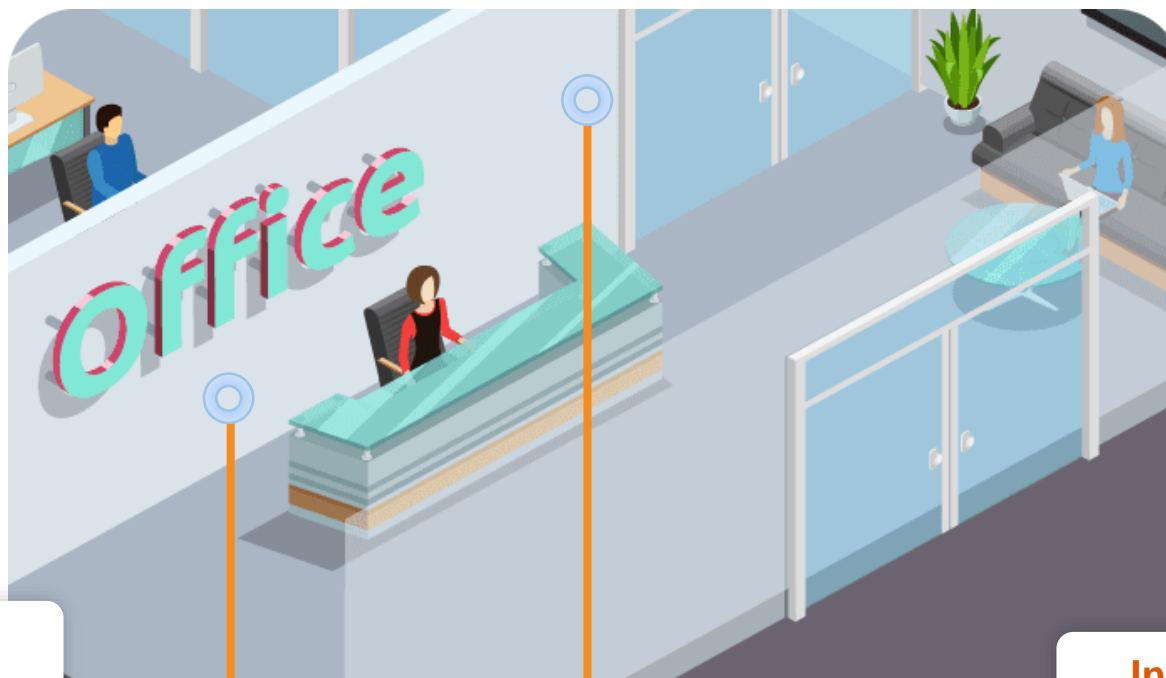
DeepinMind NVR



- Receives intrusion and line crossing detection information from cameras, and identifies humans and vehicles in the video to reduce false alarms
- Saves on costs and time compared with conventional CCTV systems



Entrance & Lobby



Digital Signage

Broadcast a range of advertisements instantly or as scheduled.

Time Attendance

Get time attendance report .

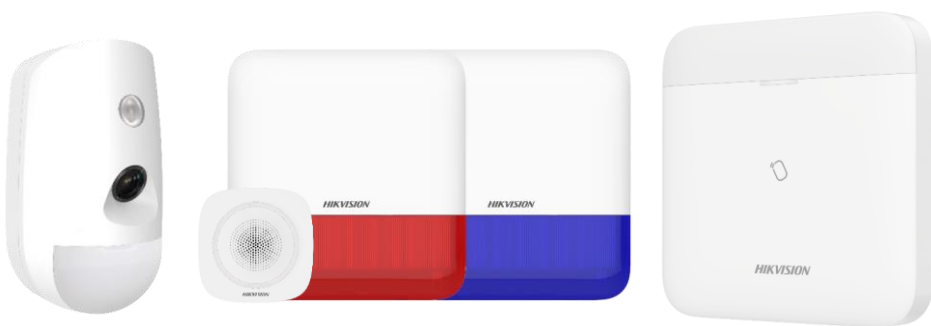
Intercom

Enable communications with office staff

Entrance & Lobby - Intrusion Detection

Non-CCTV Detection Server for Privacy Protection

AX PRO is a new generation wireless alarm system which supports 2 independent wireless communication channels. This ensures there is no interference across channels and allows super-fast transmission of alarm messages and videos simultaneously. The AX PRO provides an ideal intrusion protection solution, ideal for office facilities. With its minimalist design and superior detector compatibility, it is able to connect a variety of security peripherals to enhance safety.



AX Pro Intrusion Detection

- Conventional alarm verification: Give user phone call or send guard to end-user site to verify an event.
- New alarm verification: Send 7s recording video via app and email to end-user app or ARC to verify alarm event.

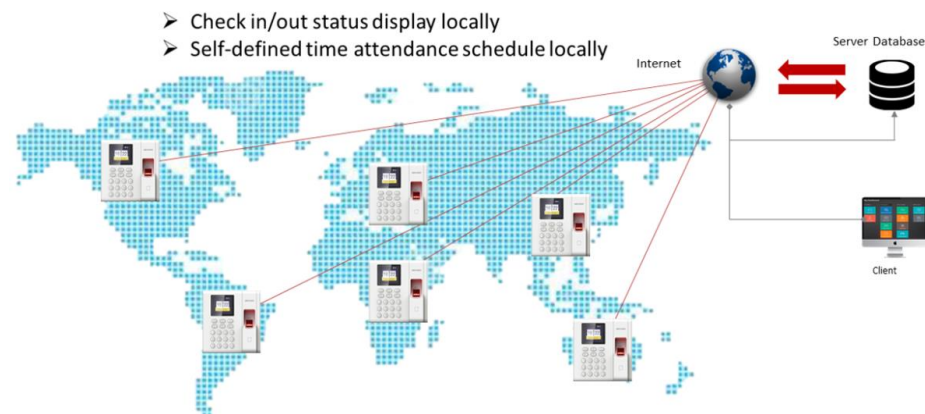
Entrance & Lobby- Time Attendance

Pro Series Access Control

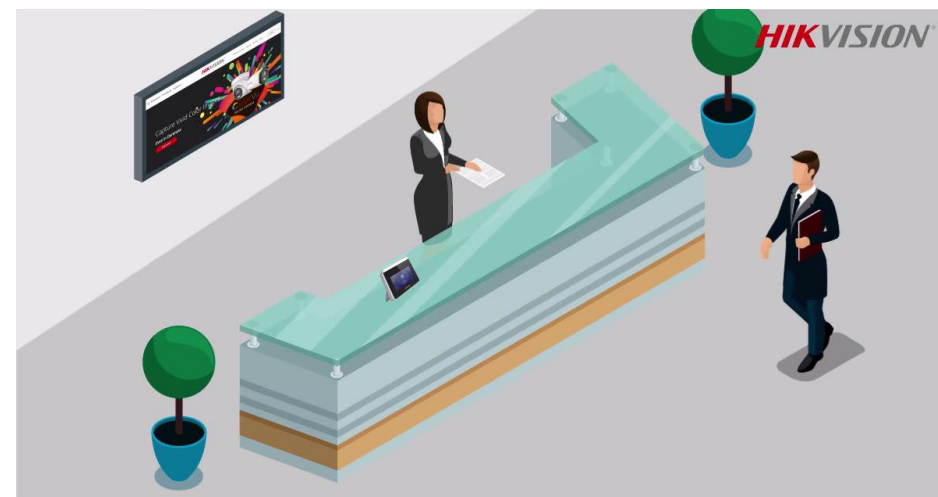


Time attendance.
Send attendance report to
your email automatically
as your need

- Get attendance report on software remotely
- Access control function, release door on Hik-Connect App remotely
- Time attendance status display (Check in/out, Break out/in, Overtime in/out)
- Elegant appearance with high quality
- Standalone IP based terminal



Transfer Time Attendance Data Via Ehome5.0 on public network



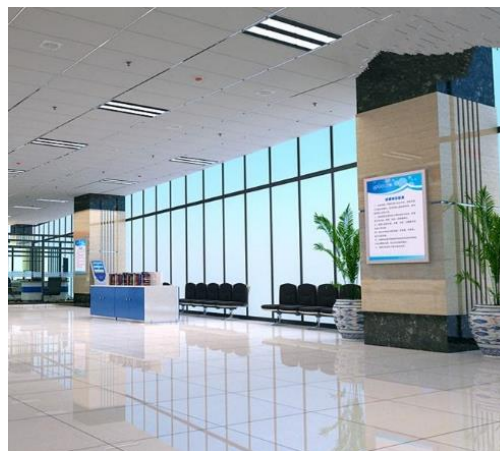
Entrance & Lobby - Advertising Display

Digital Signage



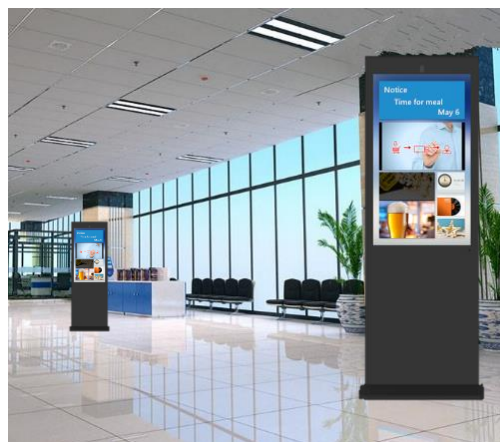
Shows **advertisements**
and releases **notices**.

1. Personalised layout with multiple content blocks
2. Free management software
3. Display schedule can be set by the hour, day, or week



Conventional Advertising

- Difficult to install and change
- Only support images and texts



New Advertising

- Easy to install and change
- Supports displaying video, animation, images and texts

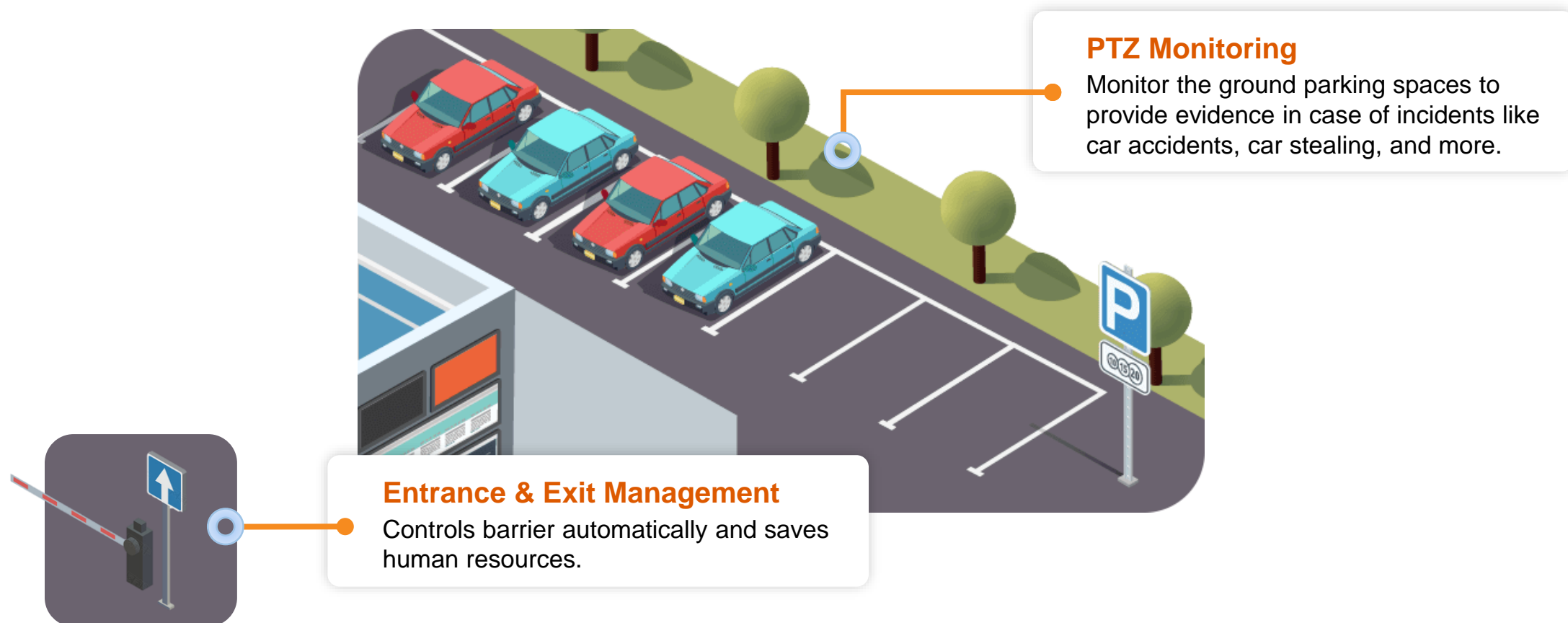
Entrance & Lobby - Intercom

Intercom

- Noise suppression and echo cancellation
- Low illumination
- Premium tempered glass
- Aerospace-grade aluminum



Car Park



Car Park - PTZ Monitoring

DarkFighter PTZ



Captures **bright and clear images** even in ultra low light environments by combining infrared and visible light.

1. Hikvision DarkFighter PTZ cameras process colour and brightness independently, outputting one FULL-COLOUR image;
2. Efficient H.265 compression technology saves on bandwidth and storage.



Monitor parking spaces to provide evidence in the event of incidents such as vehicle accidents, thefts, and more.

PTZ cameras can provide a flexible people tracking function to keep a watchful eye over any suspicious individuals.

Car Park - Vehicle Entrance & Exit Management

ANPR Camera



Controls vehicle entrance and exit via number plate recognition.



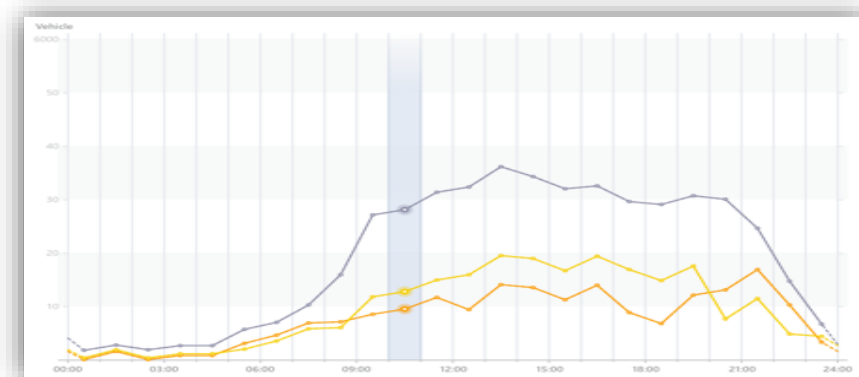
Number Plate Recognition & Recording

License Plate No.	Time	Owner	Phone No.
AS157L	15:33	Aaron	8845149
BQ22S4	15:41	Eason	6001544
NZS977	16:09	Peter	7632905

Automatically Releases Employee Vehicles

Warning on Blacklist Vehicles (Barrier Kept Closed)

Provides Reports on Passing Vehicles



Meeting Room

Smart Meeting

Simple, efficient and intelligent meeting

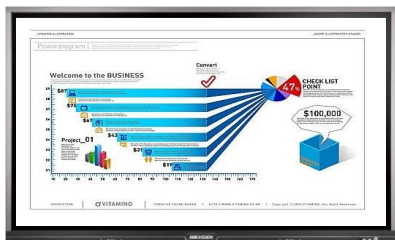


Panoramic Monitoring

The meeting room is a large interior area. Instead of deploying multiple cameras, a simpler and easier solution is required to cover the whole area without dead angle. What's more, people may feel uncomfortable when surrounded by many cameras. Using one panoramic camera can reduce such negative feeling.

Meeting Room - Smart Meeting

Interactive Display



Easy projection, convenient sharing and flexible comment contributes for a more efficient meeting.



Easy Projection



Multi-Screen Mode



Projecting max. 4 devices at the same time.

Built-in Whiteboard



1 mm writing accuracy and 20-point IR touch technology.

Flexible Comment



Flexible comments and easy sharing by scanning QR code.

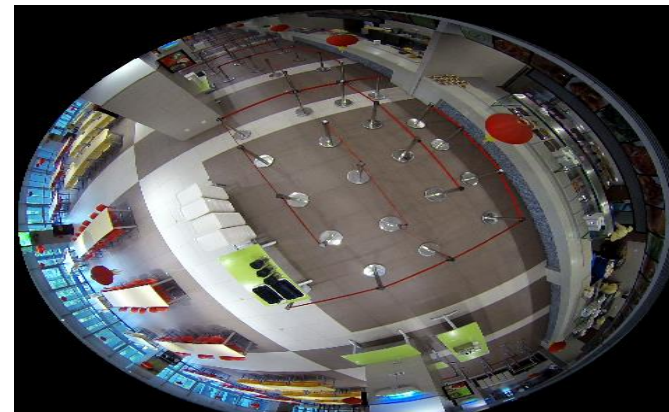
Meeting Room-Panoramic Monitoring

Fisheye Camera



One camera installed at the center of the ceiling to cover the whole office.

- Various expansion modes to present the panoramic view in conventional way of displaying
- High definition provides good image and details
- Fewer cameras means less installation and reduced labor cost



Meeting Room – Web camera

Work From Office



Video Conferencing



4 Fixing Modes

Suitable for different scenarios

Table

Laptop

Television

Tripod

Working Area



Access Control

Access control for authorised person only
Fire prevention and alarm.

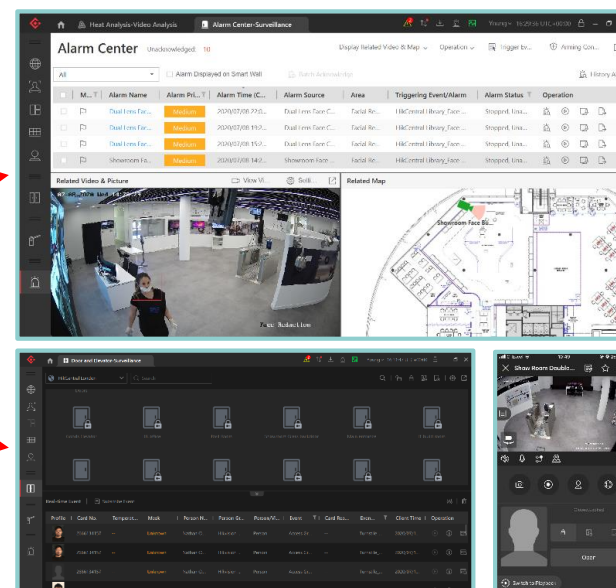
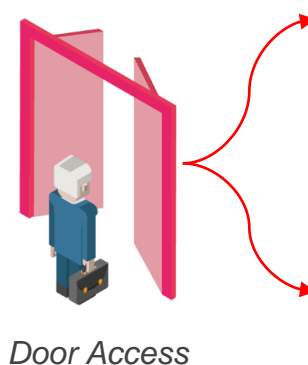
Office Time Attendance

Get attendance report at fingerprint terminal locally or on software remotely
Access control function, release door on Hik-Connect App remotely

Working Area - Access Control

How to only allow the authorised to enter the control room?

With Hikvision access control system, you can only assign the permission to the relevant person to enter the control room.



*Abnormal
access records
in alarm centre*

*Video linkage &
door operations
via Control Client
& Mobile Client*

Working Area - Access Control

Access Control Devices

- Supports card, fingerprint, face authentication modes, **all in one terminal**.
- Built-in card reader, for **easy installation**.
- Cross-system linkage between CCTV and access control provides **situational awareness**.



Face Access
Terminal



HikCentral Professional
ACS license

Control Room

Video Management

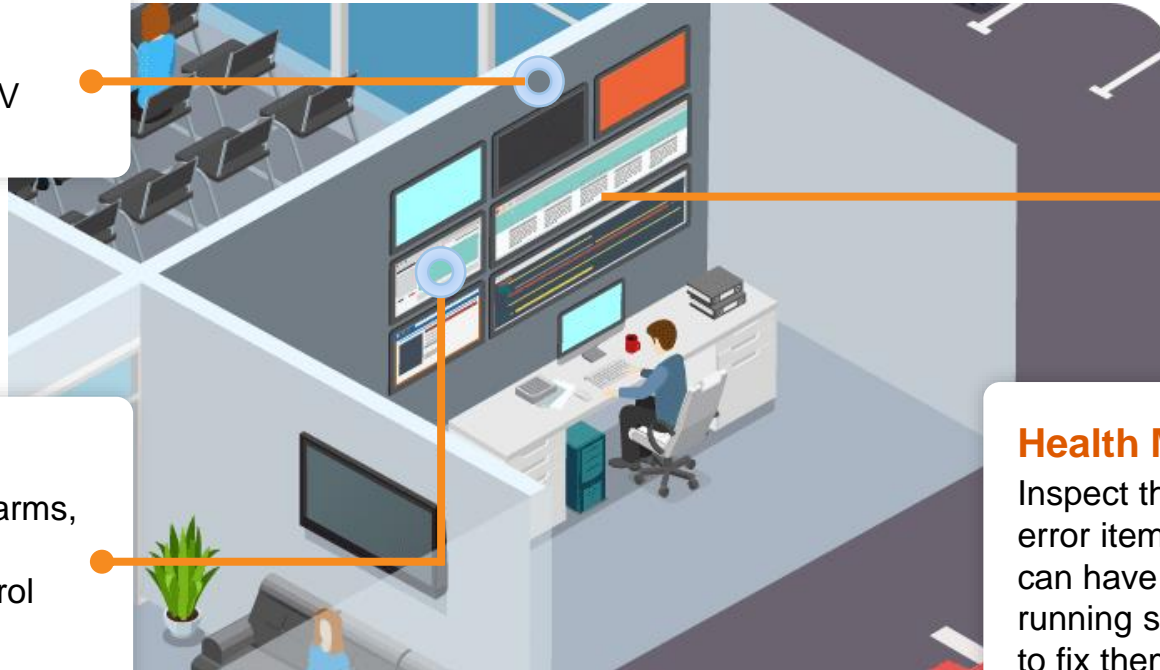
Security staff can manage the CCTV system in the control room.

Alarm Management

If there're intrusions, emergency alarms, etc., alarm signal will be sent to the control room. Operators in the control room will verify the alarm, and take reactions to handle it if real alarm.

Health Monitoring

Inspect the system status and display error items intuitively so that operators can have a grand view of the system running status, and find problems in time to fix them. Thereby, the system can always run healthy.



Control Room - HikCentral

Central Video Monitoring

HikCentral is completely centralised to achieve vast integration capabilities and deliver more powerful solutions.



Event & Alarm Management

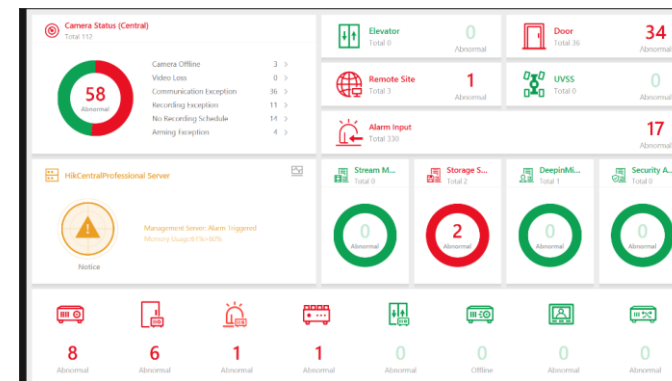
When there is an abnormal event, event and alarm management can guide you to the related video, picture and it's location (map), which helps you check what and where it's happening.



**HikCentral Professional
BI Module**

Health Monitoring

Ensures your surveillance system operates normally. Improves the efficiency of system maintenance instead of using manual manpower.





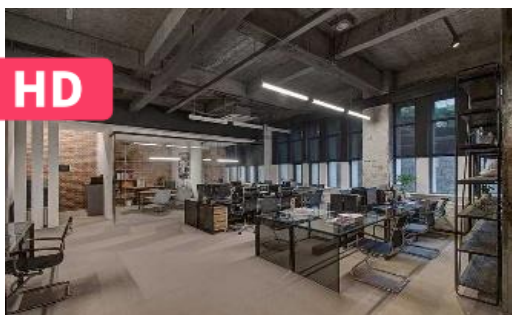
Application Summary



System Values

Higher Security Level

The advanced security system helps the hospital to detect risks in advance, generate real-time alarms, and provide evidence after the event, thereby comprehensively improving the security level of the hospital.



Improved Operational Efficiency

The integrated security system allows the security team to manage the hospital's security business centrally and efficiently. The centralised attendance check system and BI system help the office management team to raise operation efficiency.



Better User Experience

With the help of AI technologies, the hospital can optimize its services, providing a better experience for patients and visitors.





Product Cases



HIKVISION®

Product Showcase



HikCentral Workstation/32

HikCentral Professional All-in-one Workstation is a cost-effective product that embedded with Windows system and HikCentral Professional (V1.7.1) software. You can achieve efficient management of video surveillance, facial recognition, ANPR, access control, video intercom, alarm management, etc. It is widely used in small to medium-sized enterprises, communities, etc.

HikCentral Workstation/32 Specification

Feature	HikCentral Workstation/32
Processor	Intel® Core™ i3-8100 (4Cores/6MB/4T/ 3.6GHz/65W);
Operating System	Windows 10 IoT Ent (64-bit)
Memory	2X4GB 2666MHz DDR4 UDIMM
Graphics Card	Integrated Intel® HD Graphics 630
Storage	M.2 256GB SATA Class 20 solid state drive
NIC	Integrated Intel I219-LM Ethernet LAN 10/100/1000
I/O Ports	10 External USB:1 x USB Type-C 3.1 Gen 2;;5 x 3.1 Gen 1 Type-A (1 front, 4 rear),4 x USB 2.0 1 x RJ-45 2 x Displayport 1 x Serial 2 x PS/2
Form Factor	Small Form Factor
Power Supply	300W typical 90% Efficient PSU (80 PLUS Bronze);
Dimensions (H x W x D)	29cm x 9.26cm x 29.2cm (11.42" x 3.7" x 11.5")
Weight	17.57lbs / 5.26kg
Certification	CE,FCC,UL
Warranty	36 Months

Software Specification (Base on HikCentral Professional V1.7.1)

License	Max Performance (pre-activated)
All Cameras(including ANPR/Facial rec)	32-ch
ANPR Camera	4-ch
Facial Recognition Camera	2-ch
Door (including door station)	8-ch
Indoor Station	8-ch
Alarm Inputs from AX Pro	32-ch
HikCentral-P-Radar-1Unit	2-ch
HikCentral-P-Temp&Mask-Module	Enabled
HikCentral-P-EntranceExit-Module	Enabled
Data Storage	6 Months

Product Showcase

DarkFighter PTZ

- High quality imaging with 4 MP resolution
- Excellent low-light performance via DarkFighter technology



DS-2DF8425IX-AELW

2 MP ANPR Camera

- High quality imaging with 2 MP resolution
- Excellent low-light performance via DarkFighter technology



DS-2CD7A26G0/P-IZ(H)S

Fisheye Camera

- Heatmap: based on deep learning algorithms, the camera counts people and presents an intuitive map
- Multi dewarping modes: the image can be dewarped to normal image for viewing intuitively
- Built-in mic and speaker: the camera supports two-way audio for real-time audio security monitoring and communication



DS-2CD63C5G0-I(V)(S)

DeepinMind NVR

- Up to 16 channel deep learning video analysis for human and vehicle recognition to reduce false alarms
- Supports multiple VCA (Video Content Analytics) events



iDS-7732NXI-I4/16S(B)

Product Showcase

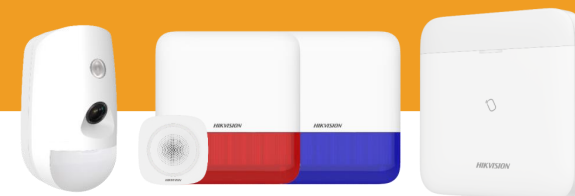
Pro Series Access Controller

- Access controller
- 100,000 cards and 300,000 events storage
- Communication via TCP/IP, ehome5.0 and RS-485
- ISAPI, OSDP supported



DS-K2600T

AX PRO



AX PRO Kit

- Slim design for an unobtrusive (unnoticeable) installation
- Fully remote configurable through App
- Multiple enrollment methods and easy installation design

KH8 Series Pro Modular Door Station

- Modular door station Main unit, needs mounting bracket
- 2MP HD Camera, Fish eye, IR Supplement
- 1 Call physical Button, 2 lock relays, 4-ch alarm input



DS-KD8003-IME1/S

KH8 Series Indoor Station

- Premium tempered glass
- Aerospace-grade aluminum



DS-KH8350-WTE1



MinMoe Access Control Terminal



Flexible Deployment

Supports wall mounting and floor standing with mounting pole.



Visualised Temperature Screening

7-inch touch screen. Temperature screening with visual results and audio prompt.



Thermographic Technology

Measures the temperature of a forehead thermographically after face detection.

DS-K1T671TM-3XF



High accuracy of temperature screening

Temperature range: **30°C to 45°C***



Mask Detection

Supports face mask wearing alerts and compulsory mask wearing alerts.
Temperature screening with mask.



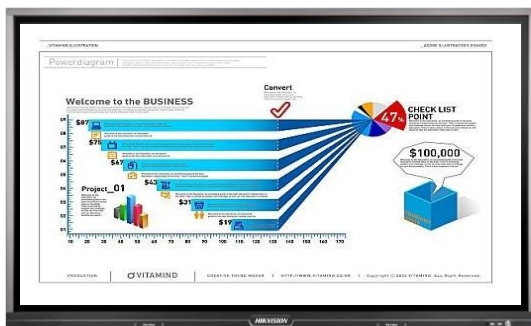
Touch-free temperature screening

Authentication distance: 0.5-1.5 m.
Authentication height: 1.4-1.9m.

Product Showcase

Interactive Display

DS-D5A65RB/A



- UHD 4K resolution
- 65 Inches
- 10m² (2-10 people)
- Dual operating system: Android by default, Windows optional
- 1 mm write accuracy, better writing experience

Digital Signage Box

DS-D60C-B



Portrait and
landscape



Built-in Wi-Fi



Built-in 32 GB
SD Card



Full HD video
(Up to 4K)



Longer
service life



24/7 operation

Web Camera



4K Ultra HD Camera

DS-U18

- 8 MP (3840 × 2160 @ 30 fps)
- FOV: horizontal 79°, vertical 43°, diagonal 92°
- Plug and Play: Type-C interface, USB 3.0
- Built-in Dual Mic



1080p HD Camera

DS-U12

- 2 MP (1920 × 1080 @ 30 fps)
- FOV: horizontal 81°, vertical 50°, diagonal 90°
- Plug and Play: Type-A interface, USB 2.0
- Built-in Mic



Ultra HD Video



High Fidelity Stereo Pick-up



Wide Angle for Large Scene



Beauty Filter



Self-adaptive Brightness



Compatible for Multiple App

THANK YOU!

