



User Manual of Density Control Solution via
People Counting Camera and HikCentral
Professional

Configuration on People Counting Camera and HikCentral Professional

1. Product Model

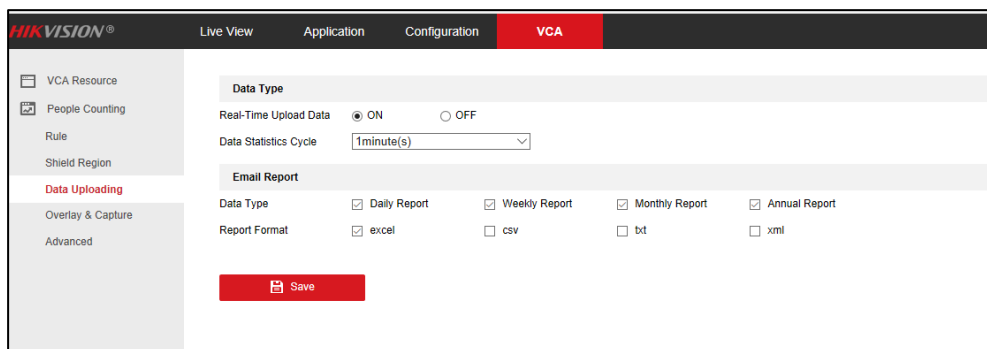
- i. iDS-2CD6810F-IV/C
- ii. DS-2CD6825G0/C-I(V)(S)
- iii. iDS-2CD7xx6G0-IZS
- iv. HikCentral Professional

2. Product Firmware and Version

- i. iDS-2CD6810F-IV/C: PJ01PC20190403057_E2_BV_EN_STD_5.4.80_190417
- ii. DS-2CD6825G0/C-I(V)(S): PJ14PC20200402001_IPCDC_H7_EN_STD_5.5.90_200430
- iii. iDS-2CD7xx6G0-IZS: baseline version
- iv. HikCentral Professional: HikCentral_V1.6.0037.20200417_JKN20200403_003

3. Camera Configuration

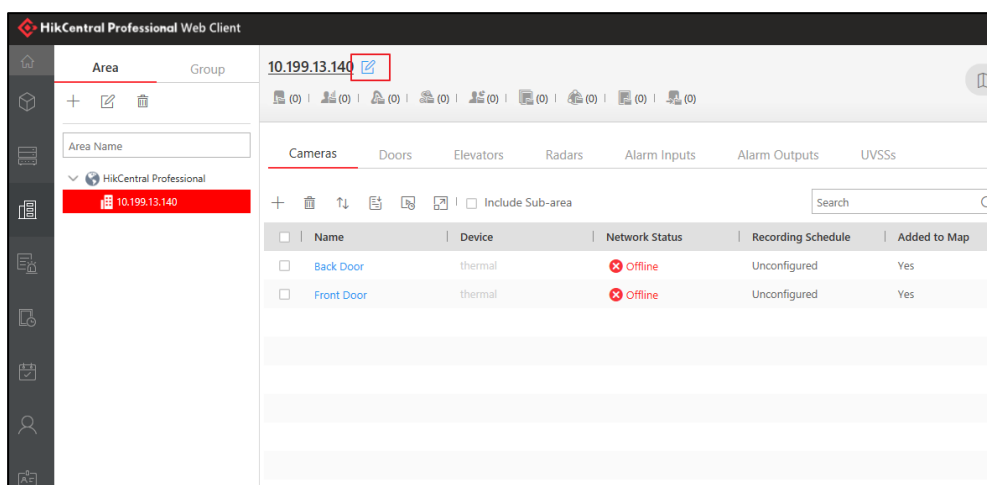
- i. Login to the camera web page->Go to VCA->People Counting->Rule to define people counting rule and linkage method. Be sure to turn on “real-time upload data”.



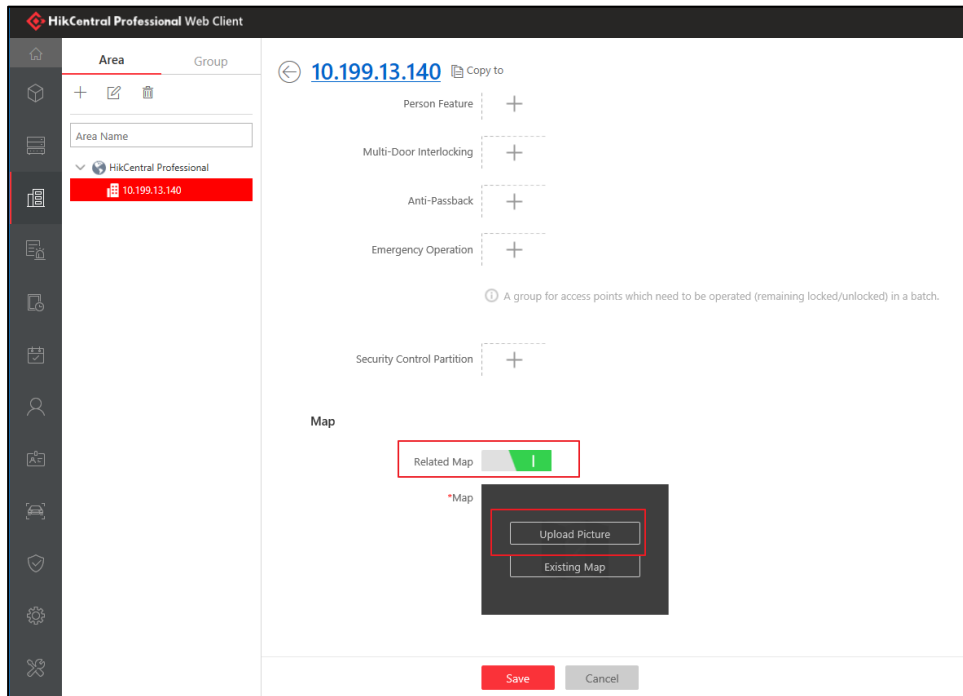
- ii. (Optional) Configure arming schedule for alarm output, if it's required to triggered alarm output via HikCentral.

4. HikCentral Web Client Configuration

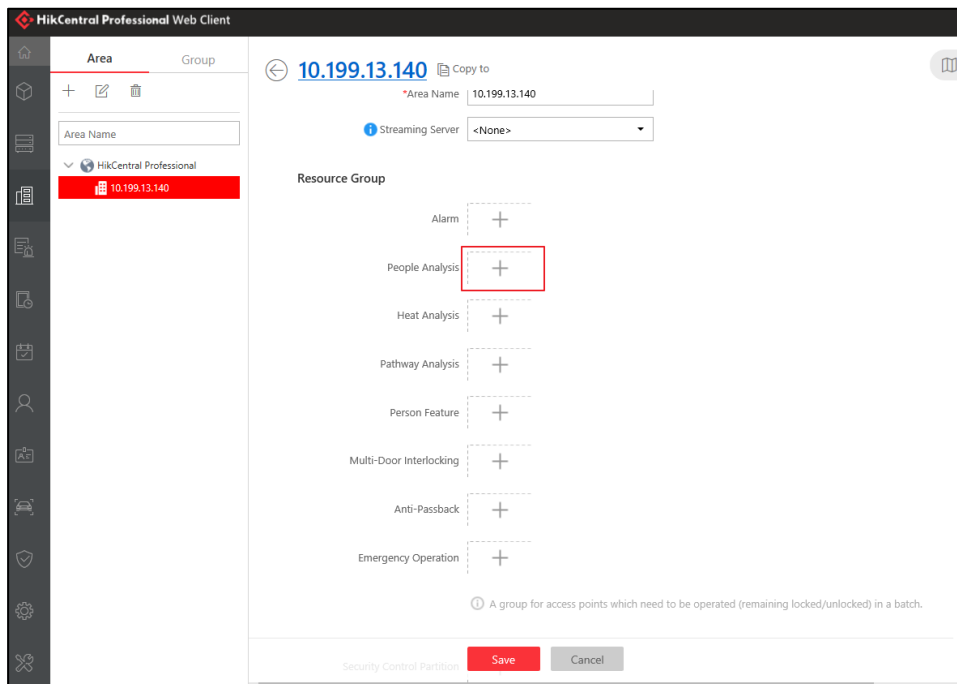
- i. Login to HikCentral Web Client->Logical View->Click “edit” button on the top menu to set up people counting group and rule. Refer to the picture below



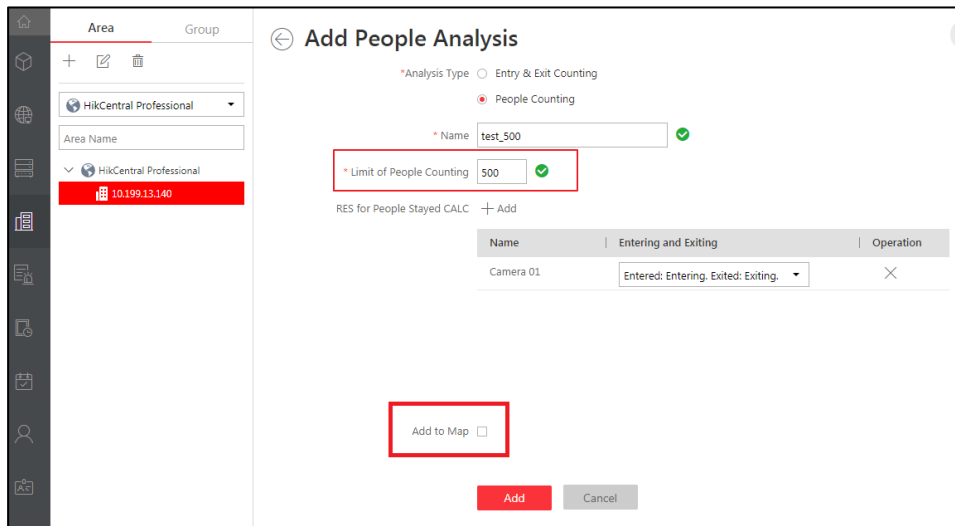
- ii. Relate picture map with the area if the GIS map is not used.



iii. Click the “+” icon next to people analysis, as shown below.

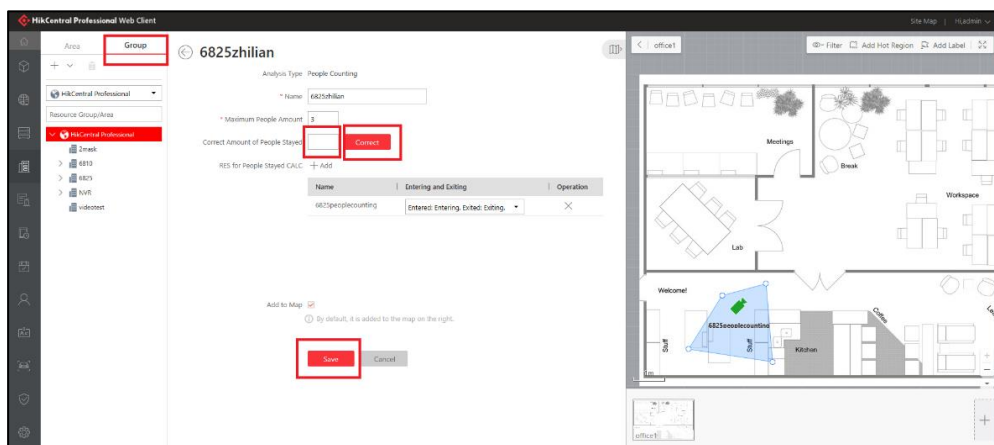


- iv. Input the group name and set up limit of people counting which is the maximum number of people available. Refer to the picture below.
- v. Click “+” button to add the people counting camera(s) to the group
- vi. Be sure to check the box “Add to Map” and adjust its size and location on the map.



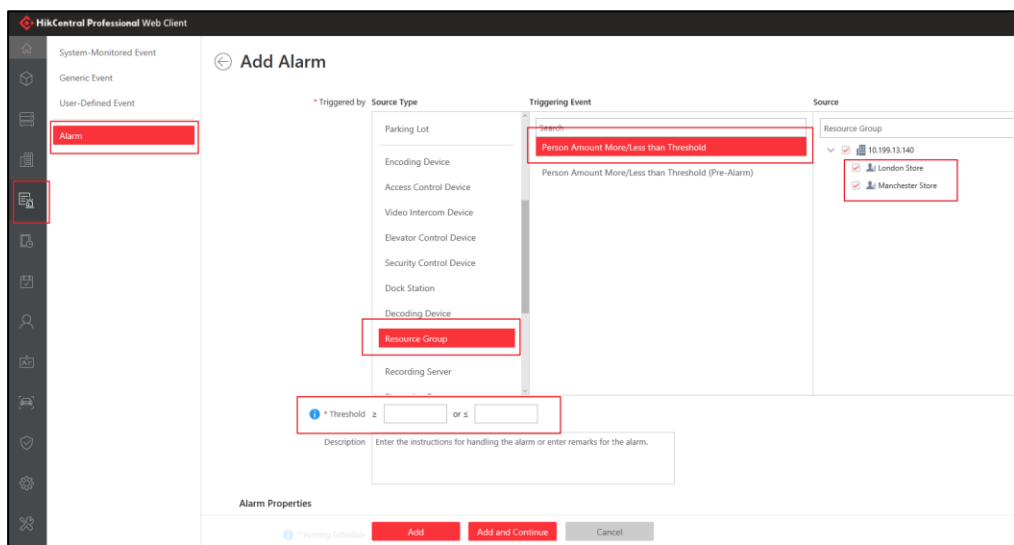
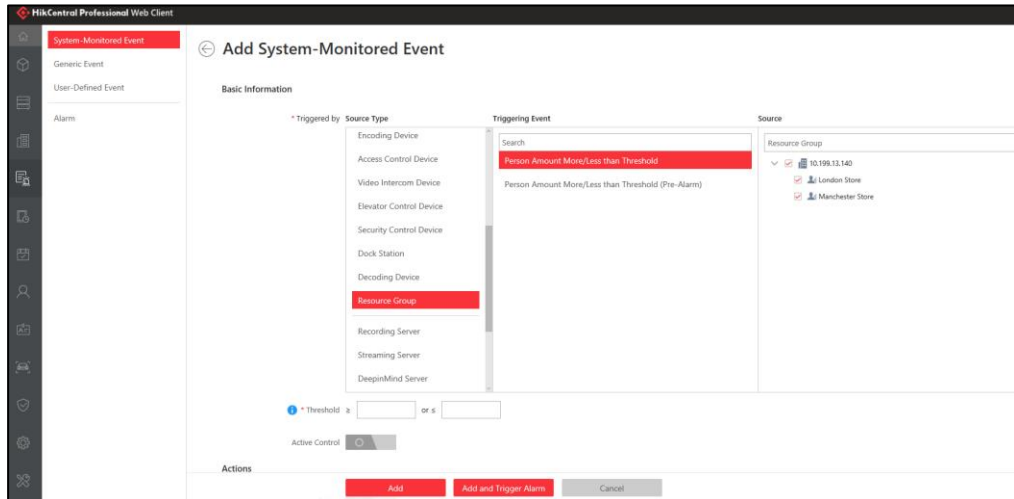
- vii. (Optional) Go to Group tab->Edit people analysis group configured at the previous step->Correct the amount of people stayed according to the actual number.

Note: If the camera is added to HikCentral via NVR, it must be an **I series NVR** also with **customized firmware** version: DZ_K51_ML_STD_V4.22.005_200424



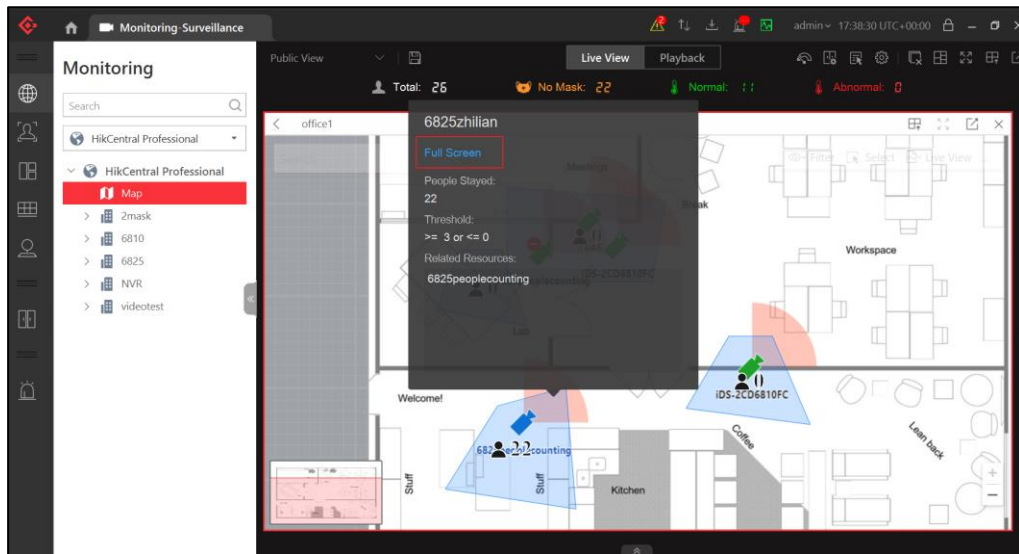
- viii. Go to Event & Alarm tab to configure system-monitored event or alarm when the amount of people entered is more than the threshold. In this case, the management staff can review how well the density control policy is conducted in each store.

Note: system-monitored event is only for reviewing abnormal records; alarm is for both receiving real-time notification and reviewing abnormal records.

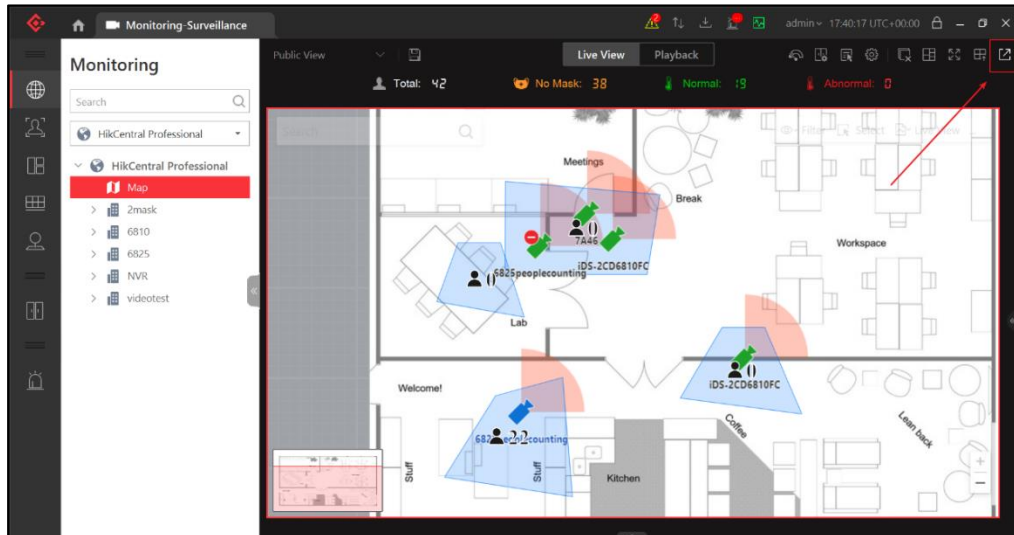


5. HikCentral Control Client Operation

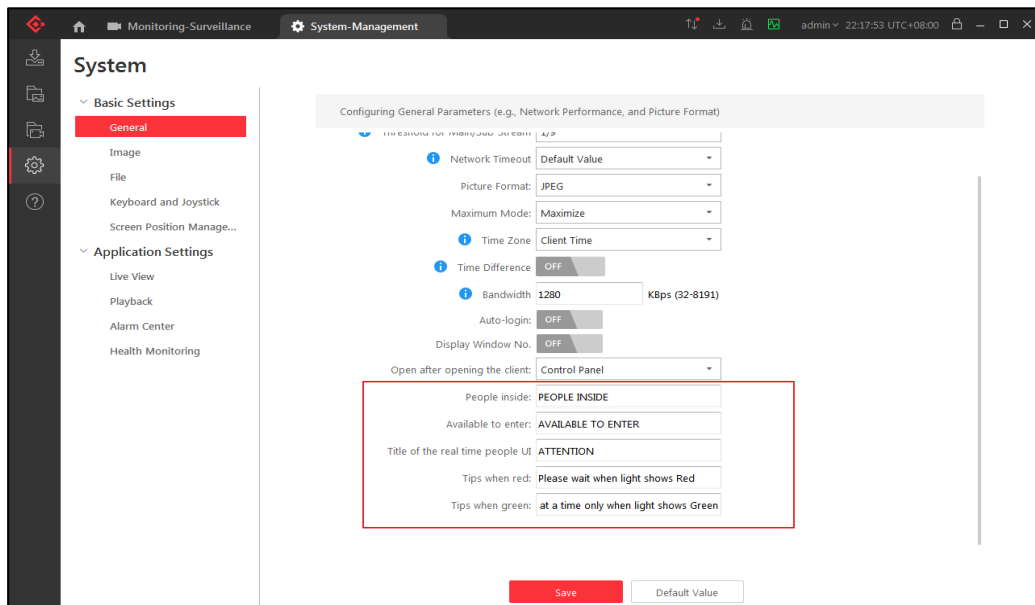
- i. Go to Monitoring->Open the map where the real-time number of people stayed displayed.
- ii. Click on the blue colored area to pop up screen->Click "Full Screen" to display the density control information in full screen, as shown below.



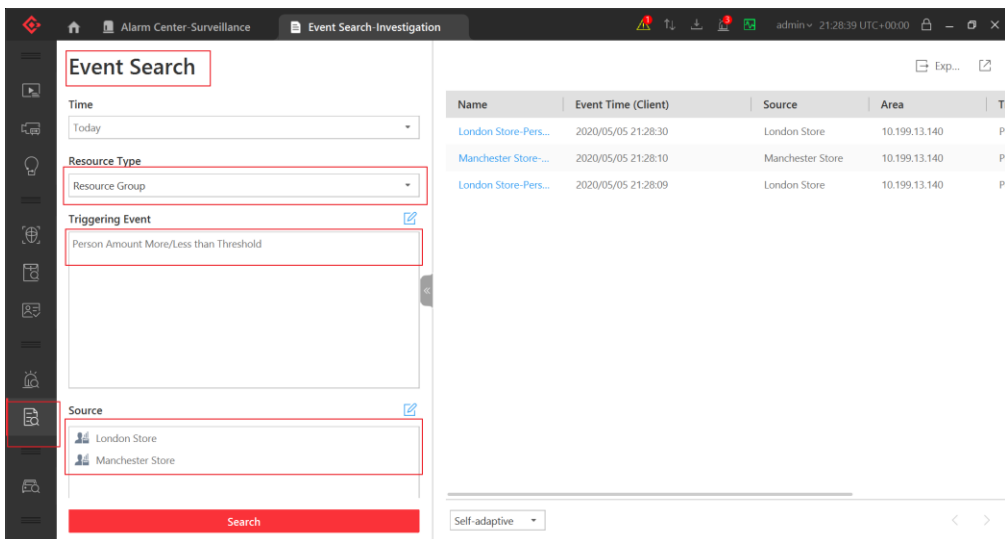
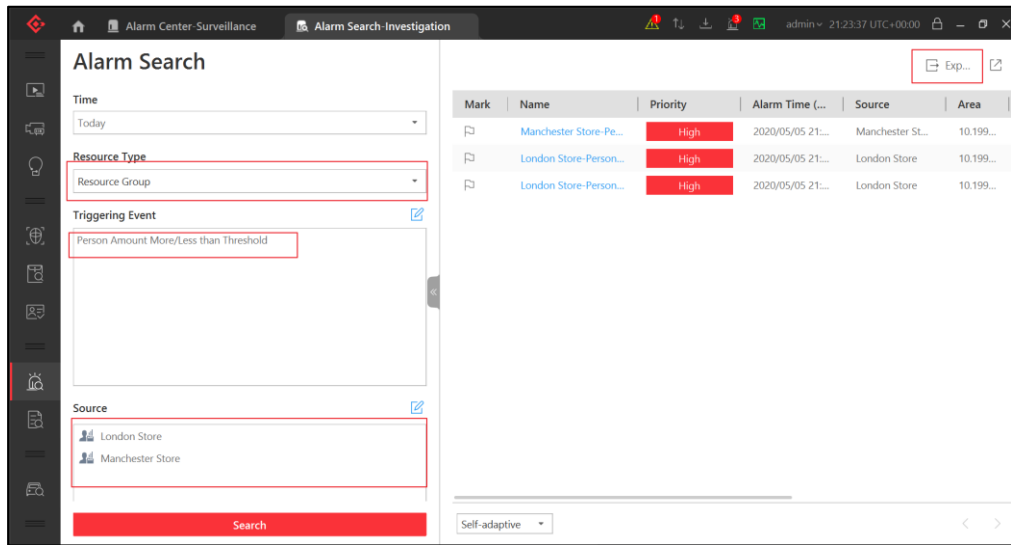
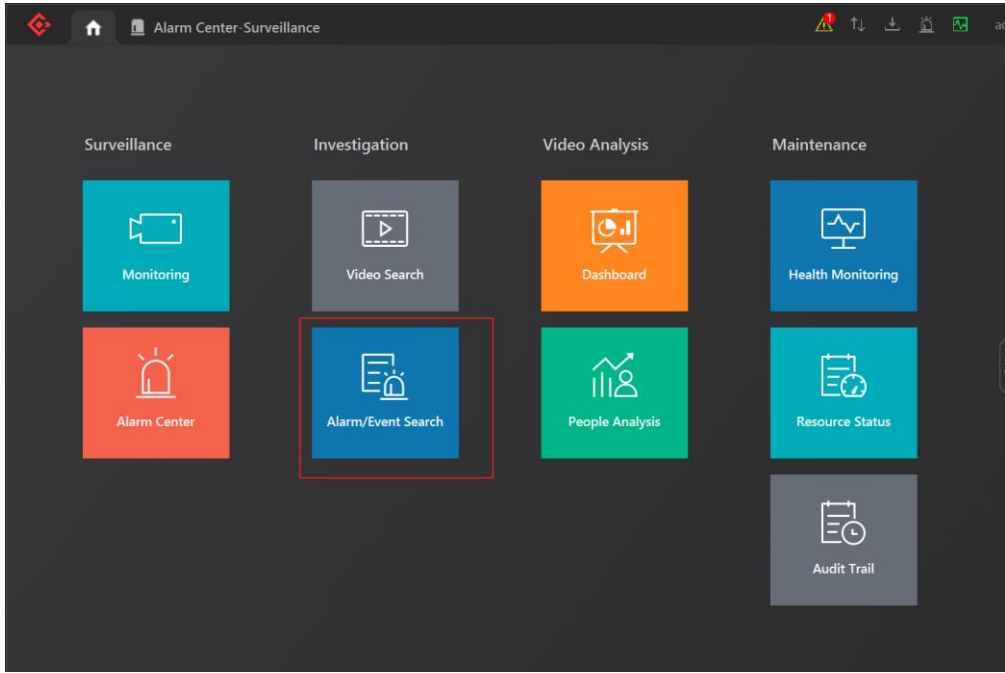
- iii. (Optional) Open the live view auxiliary screen via the icon at upper right corner, so as to display density control information on multiple monitors. Up to 4 auxiliary screens are supported.



- iv. (Optional) Go to Control Client->System Settings to change the information guidance which will be displayed on the monitor.



- v. Go to Event/Alarm Search to filter out abnormal records of each store and export in csv/excel/pdf format as required.





See Far, Go Further