

How to Configure Hik-ProConnect Box on Hik-ProConnect

- Applicable to

Hik-ProConnect: V1.3

Device model: DS-6708NI-S

Firmware Version: V 4.40.300 build 200901 or newer version

Configuration on Portal

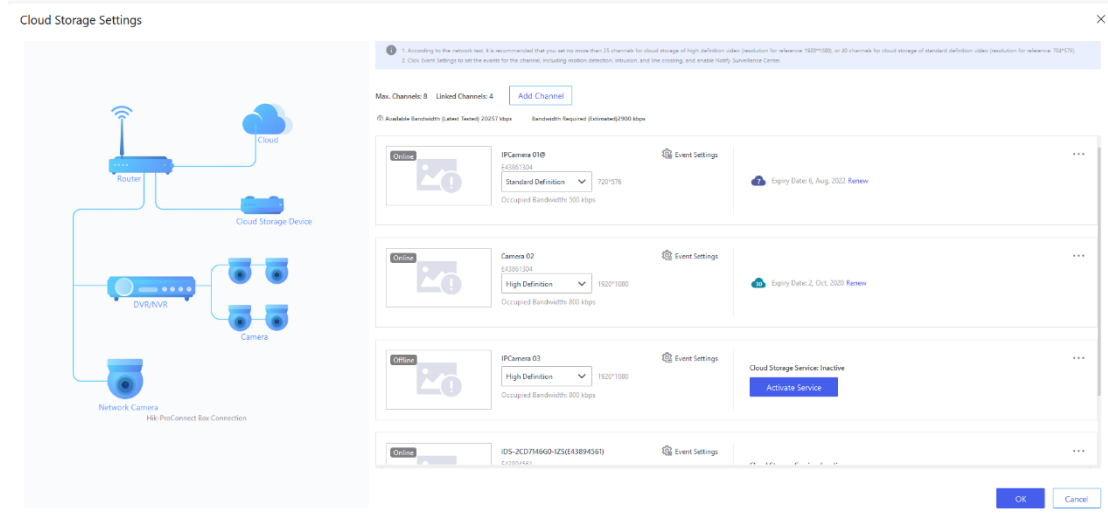
1. Add Hik-ProConnect Box. Then click Hik-ProConnect Box devices tag for advanced configuration.

The screenshot displays the Hik-ProConnect management portal. At the top, there are several status cards for different device types: Encoding Device (0), Security Control Panel (0), Access Control Device (0), Video Intercom Device (0), Doorbell (0), and Hik-ProConnect Box (1). Below these is a navigation bar with tabs for Device, Linkage Rule, Exception, ARC Service, People Counting, Temperature Screening, and Cloud Storage Service. The 'Device' tab is active, showing a list of devices. One device, DS-6708NI-S(E55056050), is selected and its configuration is shown in a modal window on the right. The configuration includes:

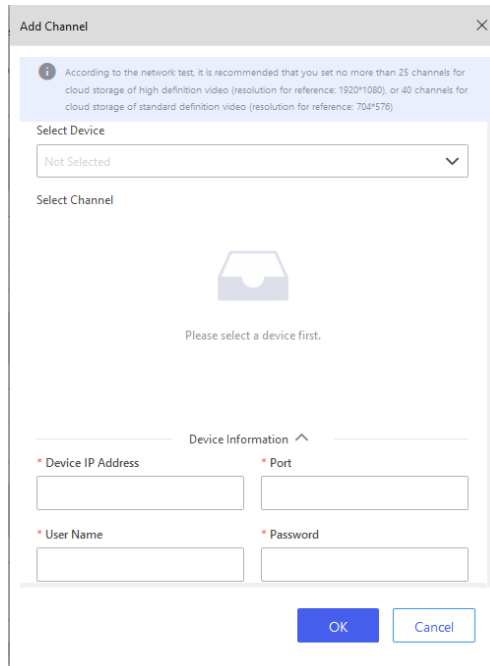
- Basic Information:** Device Name: DS-6708NI-S(E55056050), Device Type: Hik-ProConnect Box, Device Serial No.: E55056050.
- Permission:** A table with columns for Permission, Validity Period, and Operation. The 'Configuration' permission is set to 'Permanent'.
- Cloud Storage:** Max. Channels: 8, Linked Channels: 4. Below this, there are two camera entries: 'IPCamera 010' (High Definition, 150° FOV) and 'Camera 02' (Standard Definition, 720P/30). An 'Expiry Date: 6. Aug. 2022' is also shown.

Note: when set up basic parameters locally, the box is only supported in vms 4200, not web browser.

2. Click **Edit** to enter **Cloud Storage Settings** interface of Hik-ProConnect Box.



3. Click **Add Channel** for adding devices/channels inside the Hik-ProConnect Box.



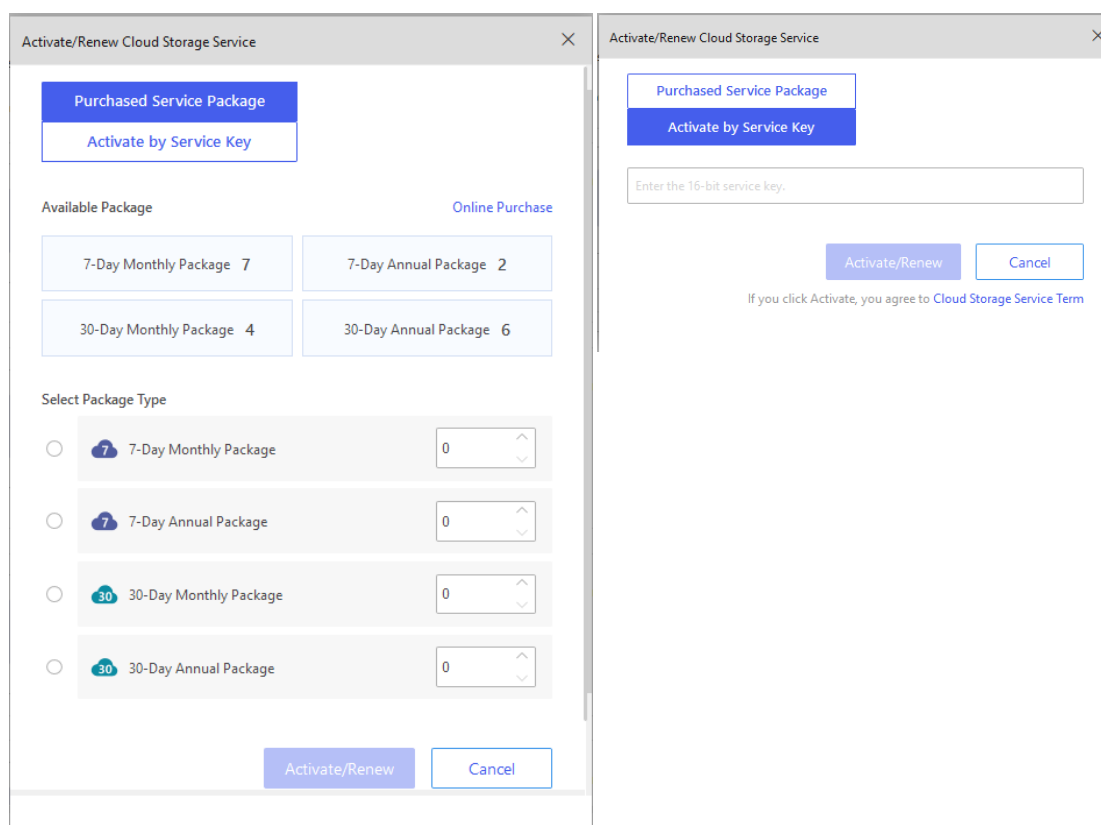
Note:

If the device has been activated, you should input the user name and password correspondingly.

The device has to be in the same Lan with the box and added to the same site with the box in Pro-connect

4. Click **Activate Service** for IPC/DVR/NVR linked with Hik-ProConnect Box.

You can either choose the Package Type which you have purchased in **Online Purchase**, activate/Renew to activate cloud storage for the channel.



5. Configure the cloud storage service channel parameter.
 - The default definition of cloud storage service is 1080p (10fps). If 7 channels are chosen in total, the supported code rate will be 8fps; and 7fps for 8 channels.
6. Click **Event Settings** to configure alarms for the channel, such as Motion detection, intrusion, and line crossing, and enable **Notify Surveillance Center**.

Note:

- The alarm video can be uploaded to the cloud storage server in real time.
- In case of network exception, real-time video upload failed and other abnormal situations, the abnormal alarm information will be recorded in the ANR recording list, and then the ANR recording will be conducted when there is no real-time video recording.

- The priority of real-time alarm video uploading is higher than that of ANR recording

The screenshot displays the 'Motion' configuration page for a camera. The interface includes a left sidebar with navigation options like System, Network, Video/Audio, Image, and Event. The main content area has tabs for Motion, Video Tampering, Video Loss, Alarm Input, Alarm Output, and Exception. Under the 'Motion' tab, the camera is identified as '[A1] Camera 01'. Key settings include 'Enable Motion Detection' and 'Enable Dynamic Analysis for Motion' both checked. The 'Linkage Method' sub-tab is selected, showing a table of actions:

<input type="checkbox"/> Normal Linkage	<input checked="" type="checkbox"/> Trigger Alarm Output	<input type="checkbox"/> Trigger Recording
<input type="checkbox"/> Audible Warning		<input checked="" type="checkbox"/> A1
<input type="checkbox"/> Send Email		<input type="checkbox"/> A2
<input checked="" type="checkbox"/> Notify Surveillance Center		<input type="checkbox"/> A3
<input type="checkbox"/> Full Screen Monitoring		<input type="checkbox"/> A4
<input type="checkbox"/> Upload Pictures to Cloud		<input type="checkbox"/> A5
		<input type="checkbox"/> A6
		<input type="checkbox"/> A7
		<input type="checkbox"/> A8
		<input type="checkbox"/> D1

A red 'Save' button is located at the bottom of the configuration area.

7. You can playback videos uploaded to cloud storage on Hik-Connect APP.
8. Other **Notes** for Hik-ProConnect
 - IPC/DVR/NVR can only be linked with Hik-ProConnect Box if they are configured within the same LAN and under the same site.