

HIKVISION®

2nd GENERATION PRO SERIES 4.0

with ColorVu & AcuSense Technology



ColorVu Technology

Large Aperture

- F1.0 super aperture
- BBAR coating
- ED Optical glass



Advanced Sensor

- Smart FSI technology
- Self-adaptive 3D DNR algorithm

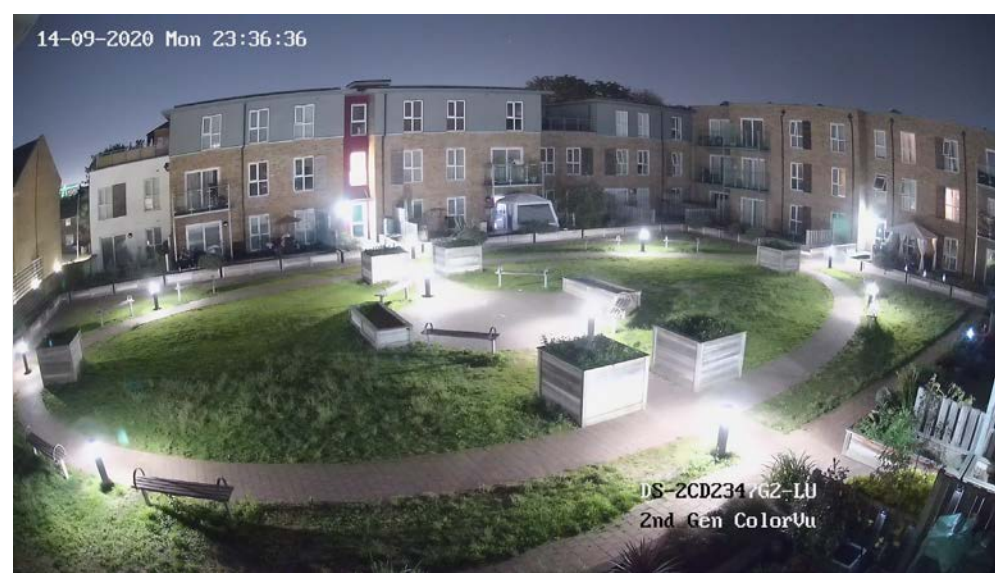
Friendly Lighting

- Anti-glare diffusion lens
- Warm supplemental lighting

24/7 Colorful Imaging



Conventional Camera

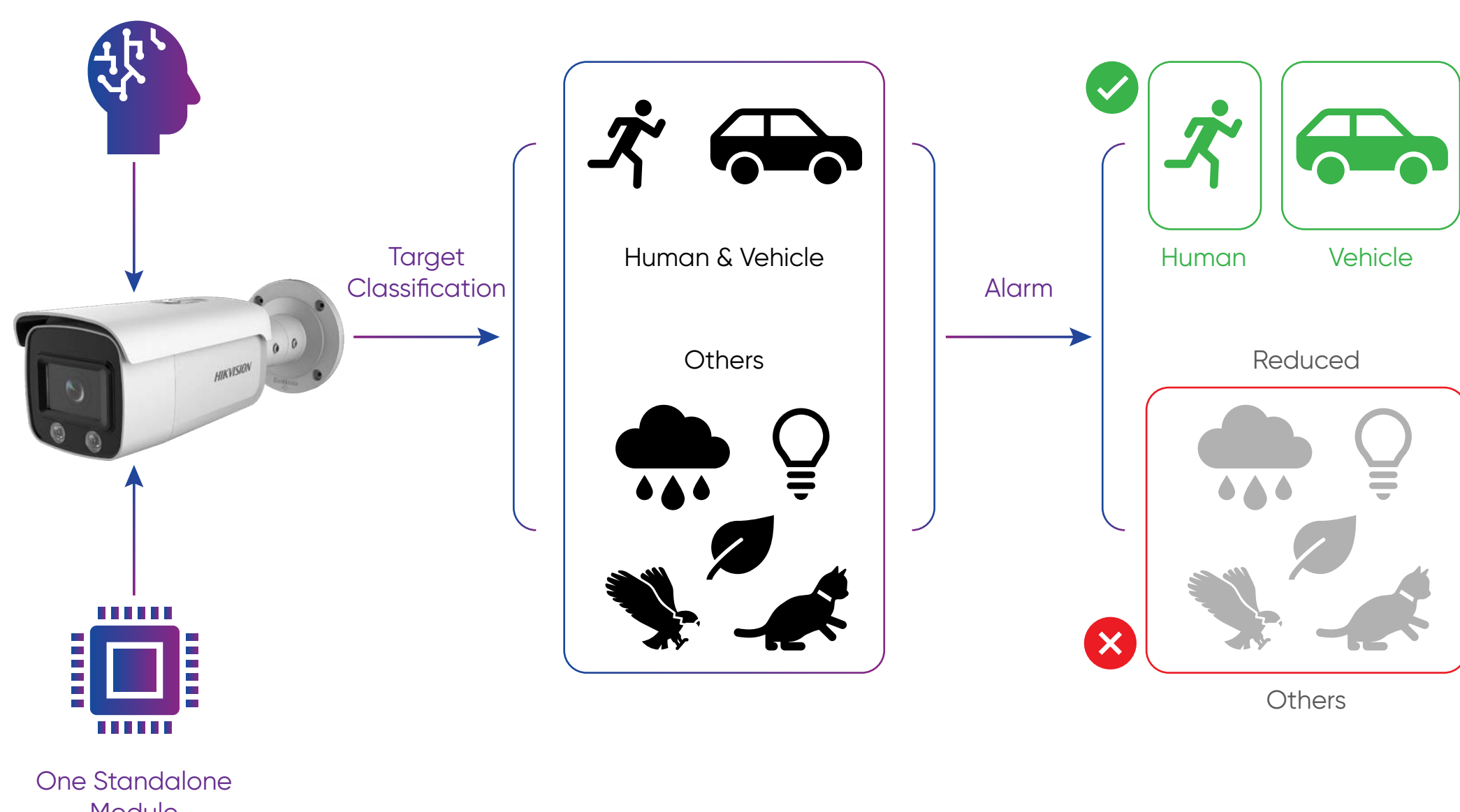


ColorVu Camera

* Images shot with conventional camera with IR on and ColorVu camera without supplemental lighting.

AcuSense Technology

Hikvision Deep Learning Algorithm

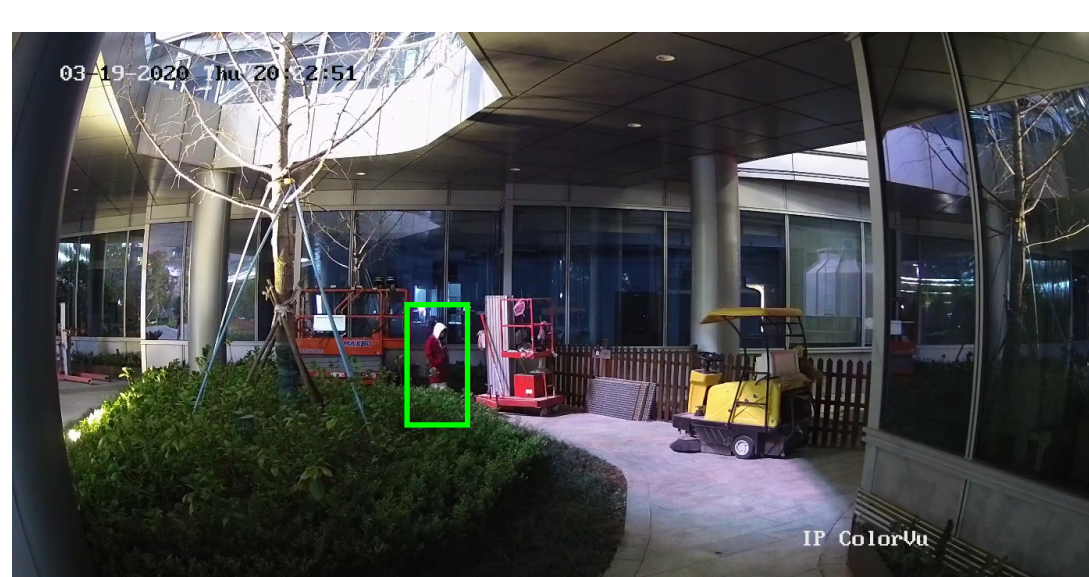


Target Classification

ColorVu & AcuSense technology can capture human or vehicle targets with vivid details, providing increased security no matter the time of day or night.

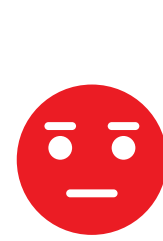


Conventional Camera

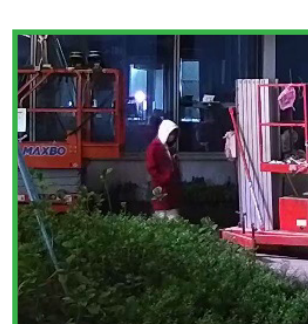


ColorVu Camera

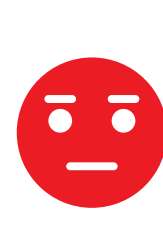
* Images shot with conventional camera with IR on and ColorVu camera without supplemental lighting.



IR reflection on smooth interfaces may cause image interference.



Warm light only needed for extremely dark environments. Low risk of light reflection.



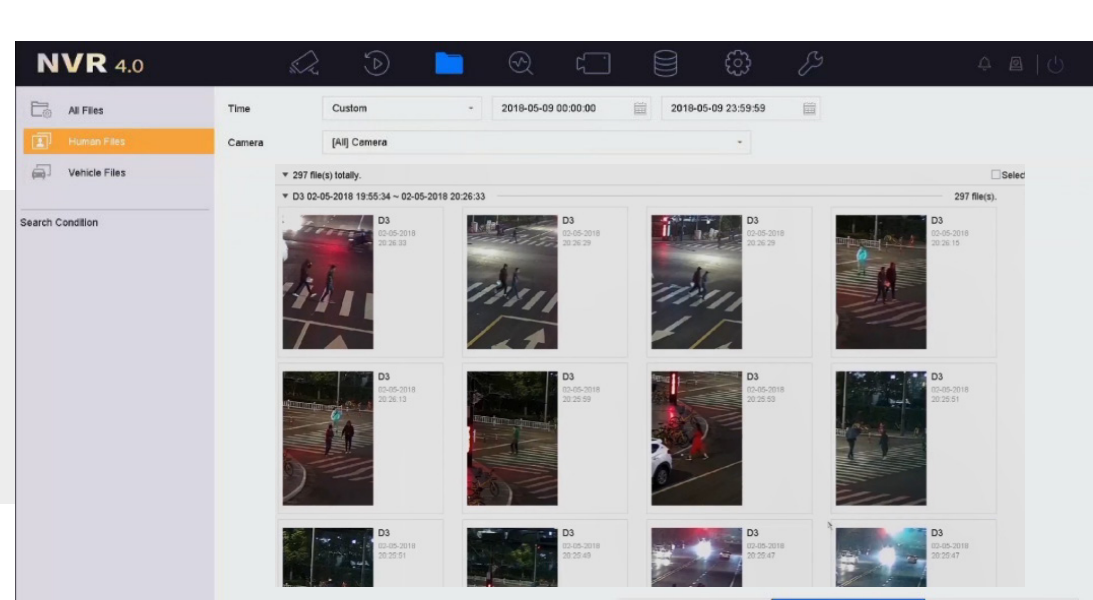
Insufficient identifying features on detected human targets.



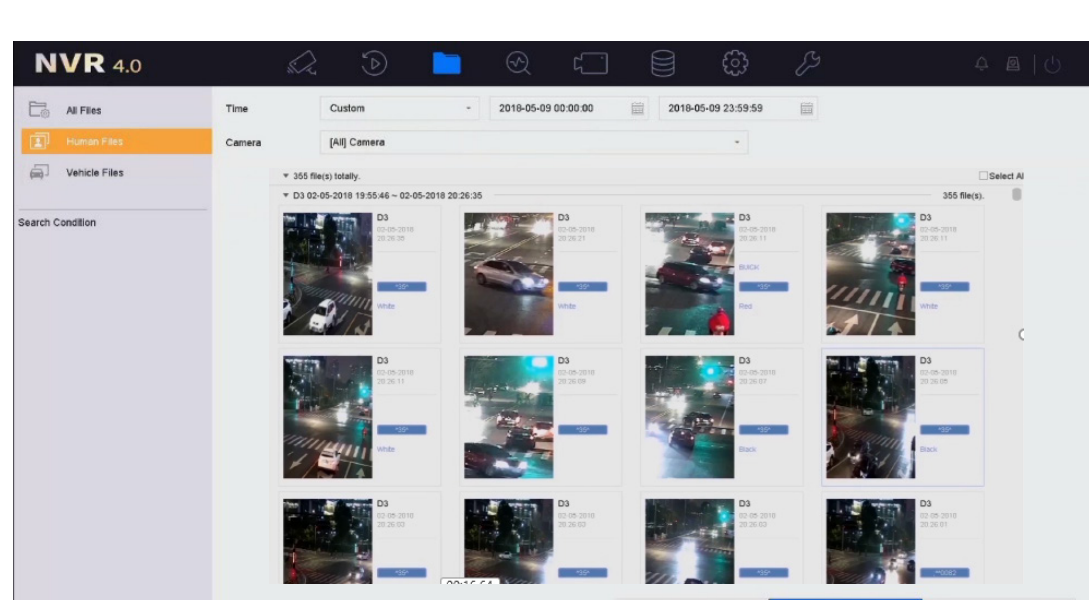
Human targets are captured with colour details, providing more useful information.

Quick Target Search

Users can search and view video clips related to specific human or vehicle events with just one click.



Human Files



Vehicle Files

Product Showcase



DS-2CD2047G2-LU
DS-2CD2027G2-LU



DS-2CD2347G2-L(U)
DS-2CD2327G2-L(U)



DS-2CD2T47G2-L
DS-2CD2T27G2-L

- 0.0005 lux @ F1.0
- 2/4 MP

- **AcuSense**
- -U: built-in mic

- Friendly Lighting