



AX PRO

How to set up:

- ✓ Adding to HIK-ProConnect
- ✓ Adding devices & sensors
- ✓ Adding network camera & linking to a device
 - ✓ Handing over Hub to HIK-Connect user

HIKVISION PRODUCT TEAM

2021-04-28

AX PRO

This quick guide shows how to:

- Adding to HIK-ProConnect
- Add devices & sensors
- Add a network camera
- Handing over Hub to HIK-Connect user

All operations in the quick guide are based on firmware version V1.2.2 build 210107

1. Basic introduction

Hikvision offers intruder alarm solutions which combine a deep customer understanding with world-leading technologies. Hikvision provides top-tier intruder products suitable for a range of market segments and vertical applications. These include everything from residential and SOHO (small office/ home office) solutions, to commercial applications.

The new AX PRO series supports up to 210 peripherals from a wide range includes internal and external detectors, contacts, keyfobs, and life safety sensors. The extensive wireless range of intrusion devices feature award-winning, proven and patented intrusion technologies, for complete confidence and peace of mind, with easy installation using signal strength indicators and one-push-to-connect feature.



2. Operation

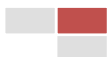
(1) Adding to HIK-ProConnect

Firstly make sure your hub is powered up & networked.

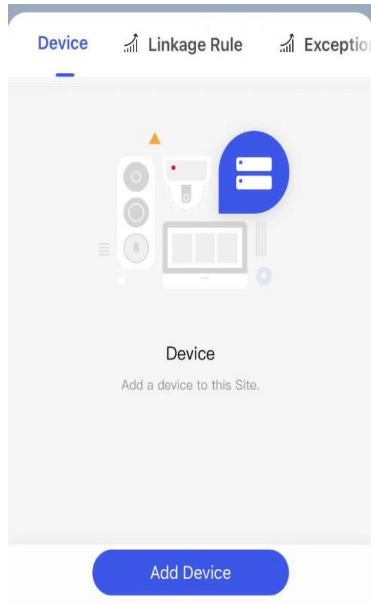


Then go to HIK-ProConnect. Create an account or log in to existing account. Then choose a menu called Site. Create new site or add to existing site. If creating new site populate with requested information:

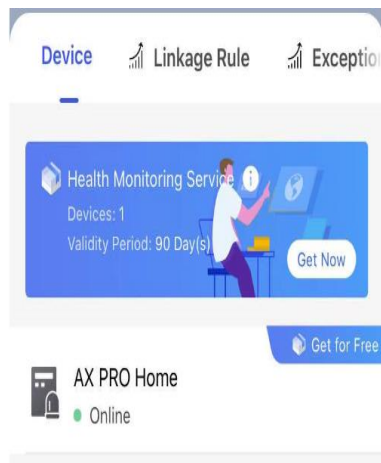
- Site name
- Time Zone
- Scene (What type of site. Example: factory, house etc)
- Site Address



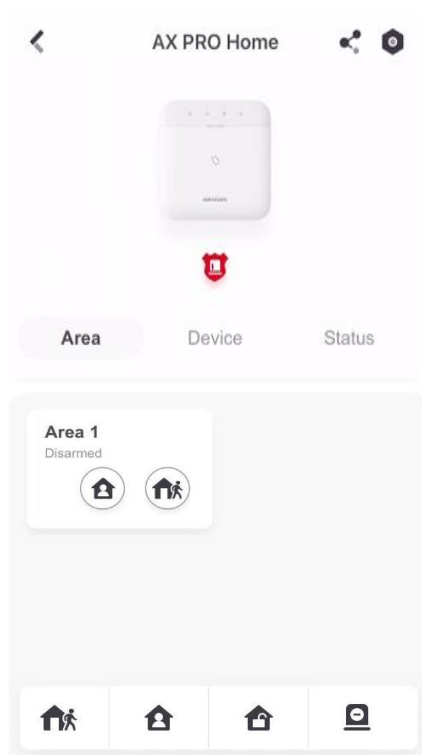
- Once information of site is populated:
Go to add device at bottom of page-Scan QR code in rear of the hub (AX Pro panel) to add this device to HIK-ProConnect & associate with the particular site.



Device is then added to this site



Simply press down on Hub image for below menu to appear which displays three sub-menus-1- Area, 2-Device & 3-Status.



Within first sub-menu called “Area” it is possible to:

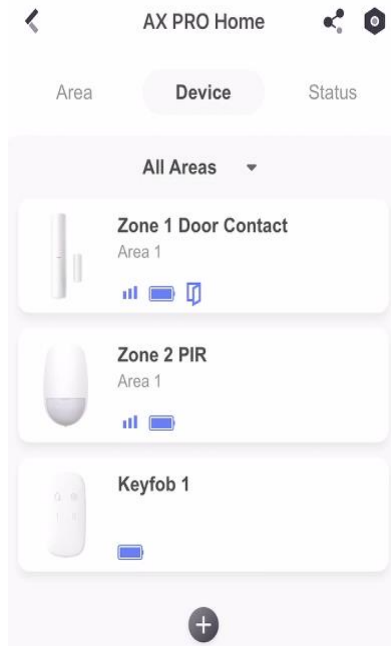
- Away Arm
- Stay Arm
- Disarm
- Silence alarm



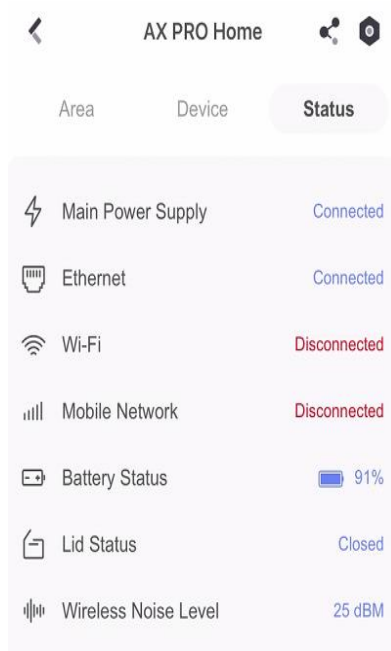
(2) Adding devices

- Within second sub-menu called “device”:

Go to add device (+symbol) at bottom of menu-Scan QR code on rear of device- example door contact. It will then prompt the installer to switch on the power switch within the device (located by taking cover off the device). Once switched on device will add to the system. Then simply name & save.



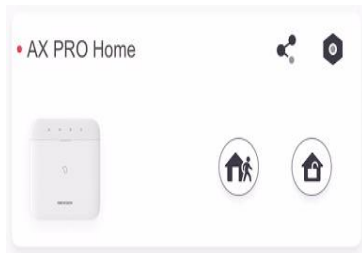
See below information found in the third sub menu called “Status”.



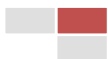
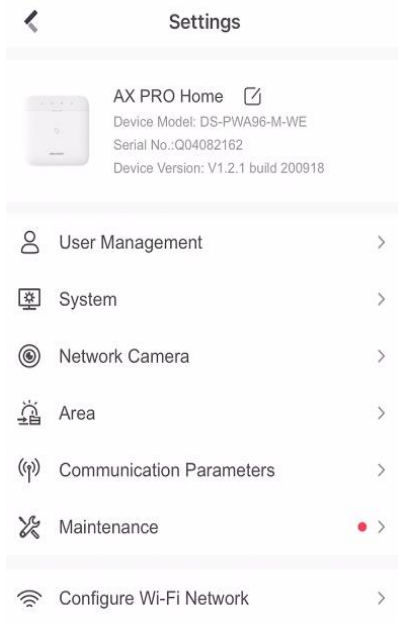
(3) Adding a network camera & linking to a device



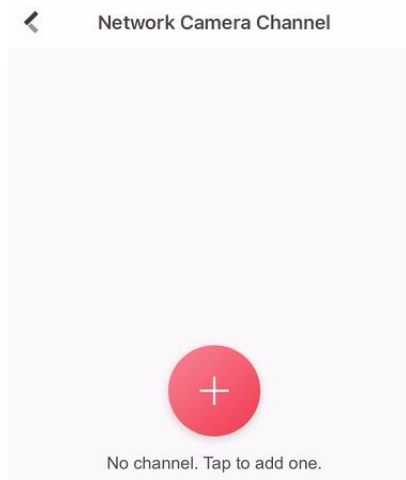
Staying within App choose settings. Settings symbol found in top right hand corner as below:



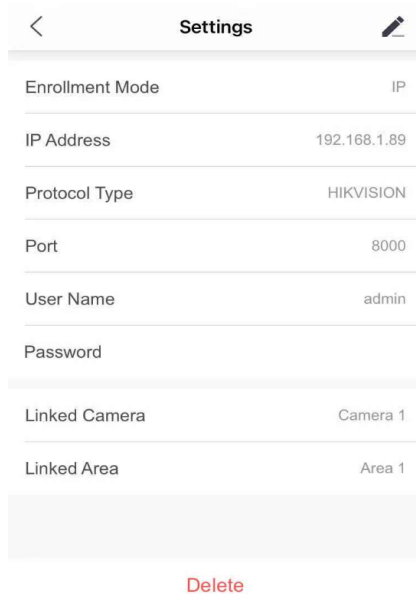
Then go to "Network camera" menu:



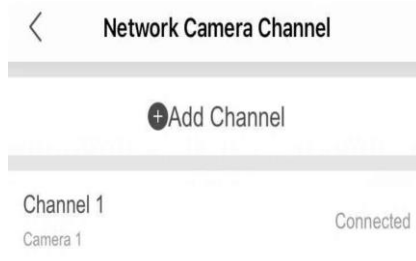
Simply click on + symbol



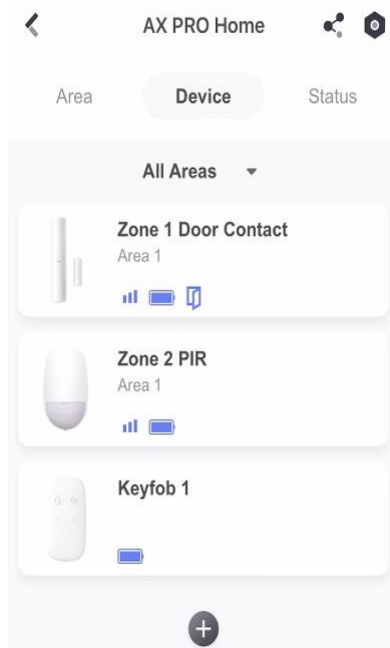
Add camera via IP domain



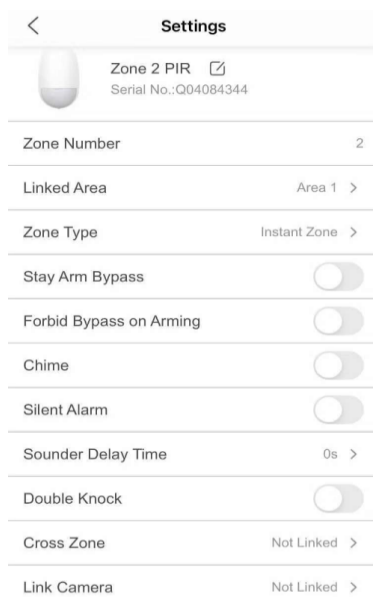
If camera added successfully it should appear connected as below.



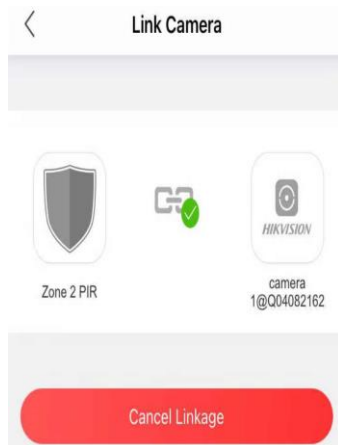
Next go back into sub menu “Device” & link to a specific device. In this example a PIR.



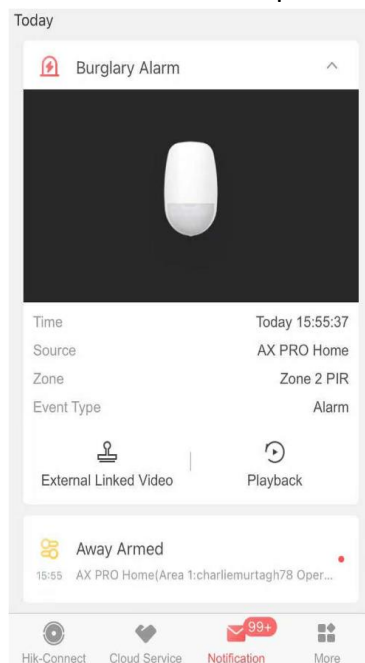
Choose “Link camera” at the bottom of the menu



Link device with camera added



Activate system / device to test. Burglary alarm notification should be sent to app along with a notification with linked camera footage. In the notification as below there should be an option for playback.



A seven second video should be available when playback is pressed. Five second pre-alarm + two second post alarm or vice versa



(4) “Handing over” Hub to HIK-Connect user

As an installer HIK-ProConnect offers a wide range of benefits such as:

- Health Monitoring
- Remote configuration

To name just a few.

However it is also possible to “hand over” a site to the end user’s HIK-Connect Mobile Client. (Site manager to site owner)

Simply choose the device within HIK-ProConnect. Choose “Invite”. Then enter in the end users HIK-Connect account detail. For example:

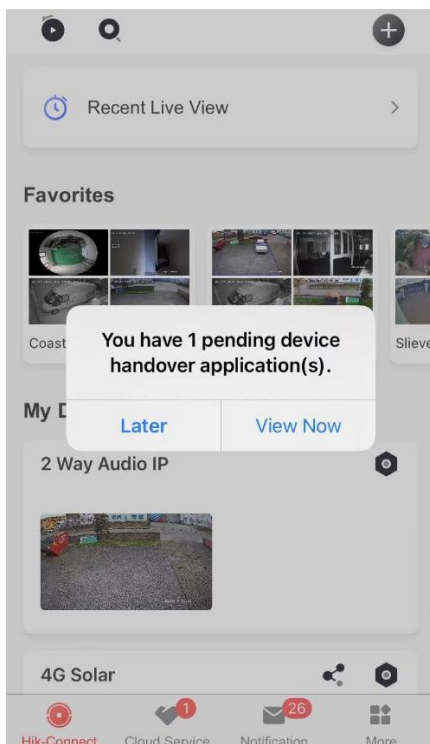
Email:

If the customer has set up their HIK-Connect account via email address-invite using that email address

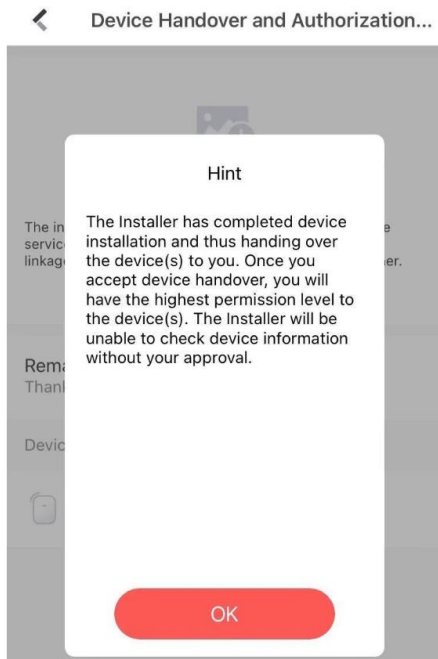
Phone number:

If the customer has set up their HIK-Connect account using a particular mobile number-invite using that mobile number.

Once invited the customer will receive the following message below via their HIK-Connect client



End user can choose “View now” & they will be presented with the following message below:



First Choice for Security Professionals Hikvision Technical Support

