

NEW ULTRA SERIES NETWORK CAMERA

With Large Optical Zoom and AcuSense Technology



Camera dedicated to large-scale security

HiKvision has released its new network bullet camera with AcuSense technology. This camera uses an ultra-long focal length, supports up to 15x optical zoom, and uses high-performance IR LEDs to ensure long-distance protection of a large area.



Focus on Human & Vehicle Events



15x Optical Zoom

Performance Comparison

Performance comparisons between high magnification cameras and conventional cameras can be seen below:

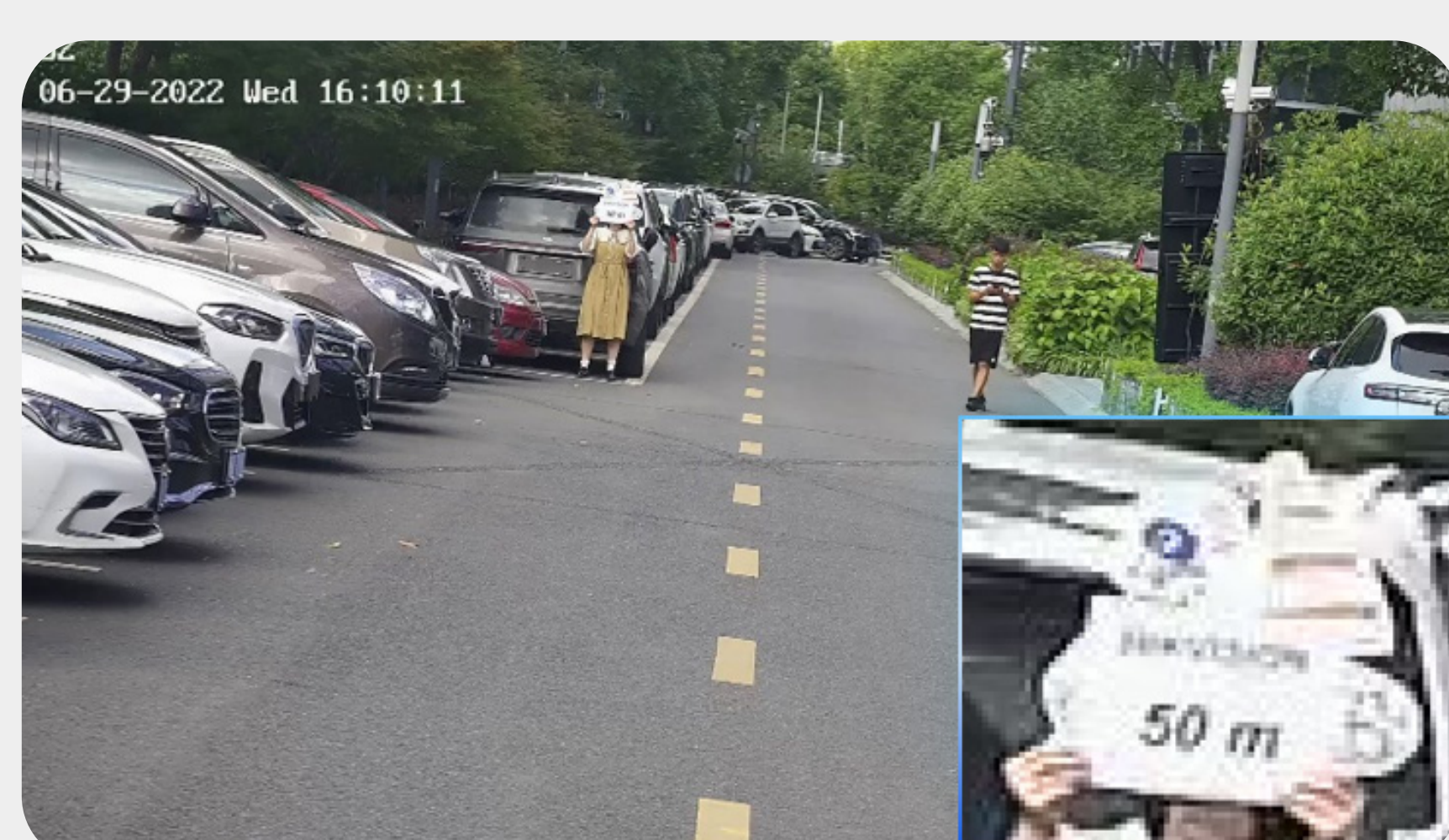
Up to **4X** optical zoom

* Conventional IP camera with 8-32 mm focal length

VS

Up to **15x** optical zoom

* 3A26 camera with 4.7-71 mm focal length



► Objects and details can be seen clearly

50 Meters

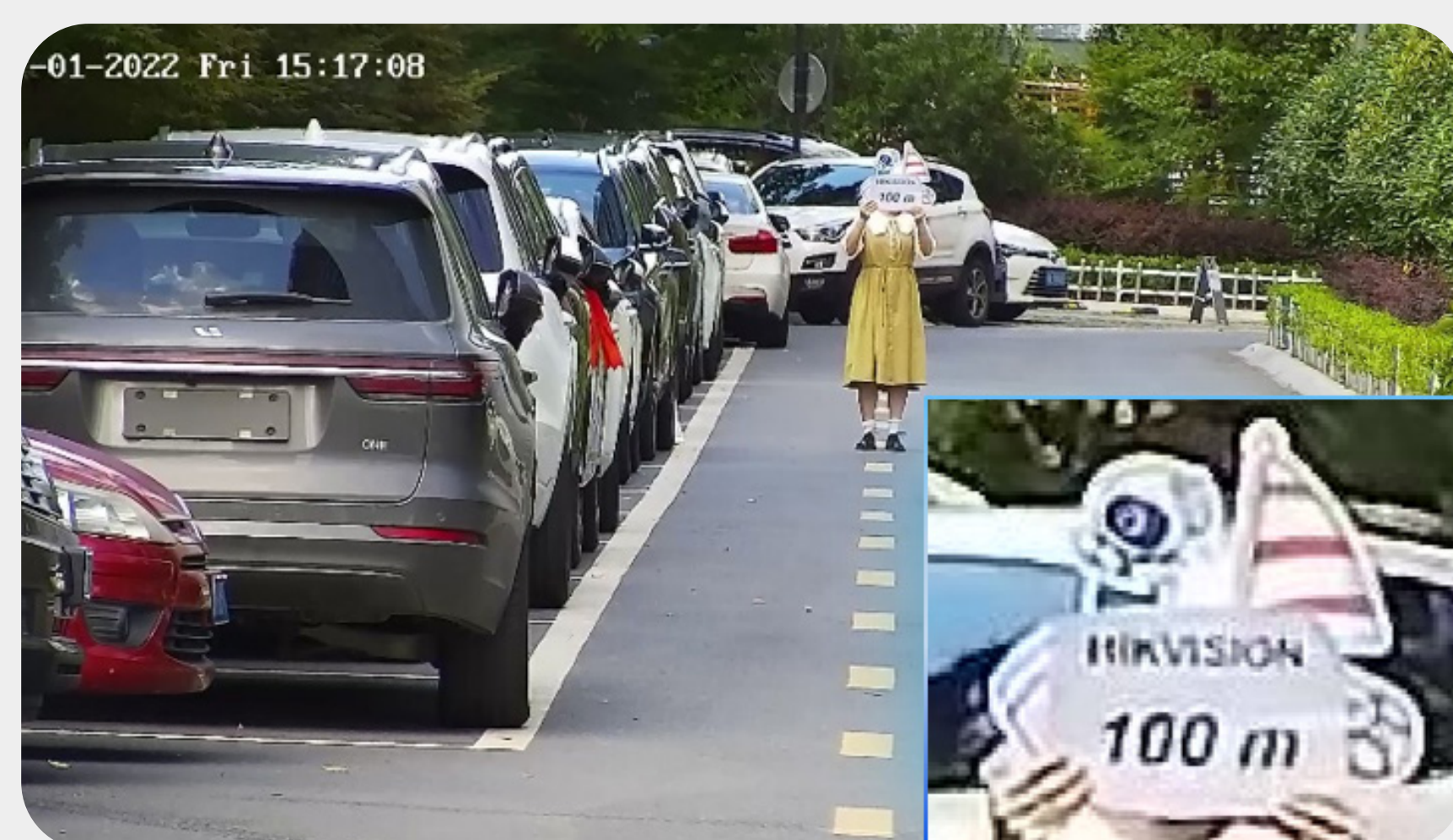


► Objects and details can be seen clearly



► Good at target detection, but lacks the detail of small remote objects

100 Meters



► Objects and details can be seen clearly



► Not suitable for 150 m monitoring

150 Meters



► Good at target detection, but can lack the detail of small remote objects

Night Performance

The infrared distance of up to 150 m makes an object clearly visible at night



Intelligent Protection



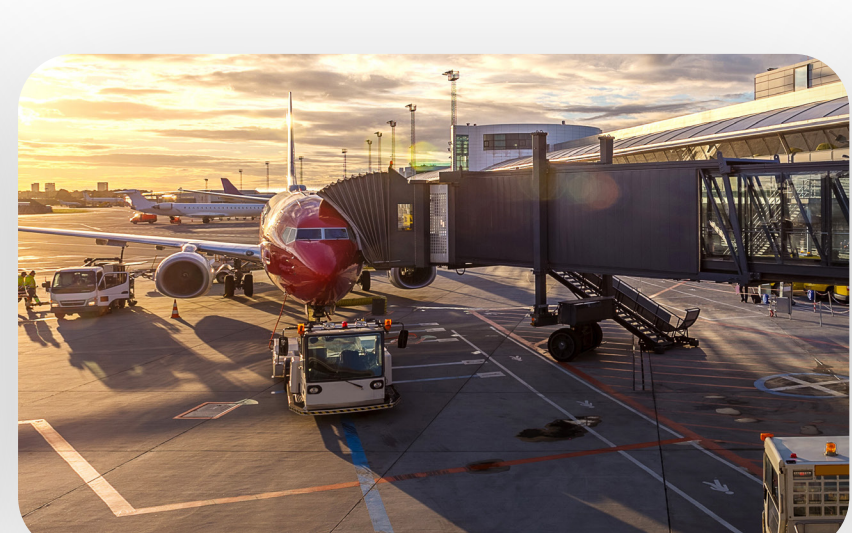
AcuSense Technology

With AcuSense technology, the camera detects humans and vehicles, and triggers accurate perimeter protection alarms based on human and vehicle events.

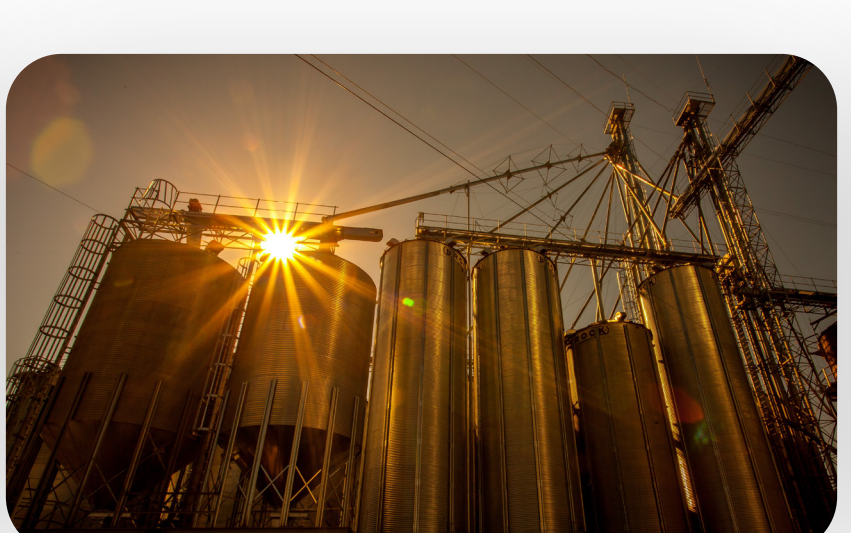
Application Scenarios



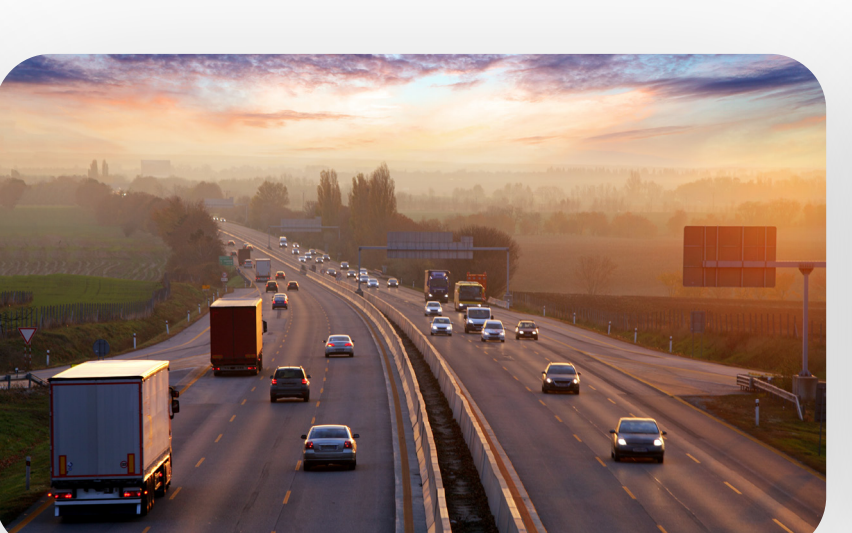
Squares



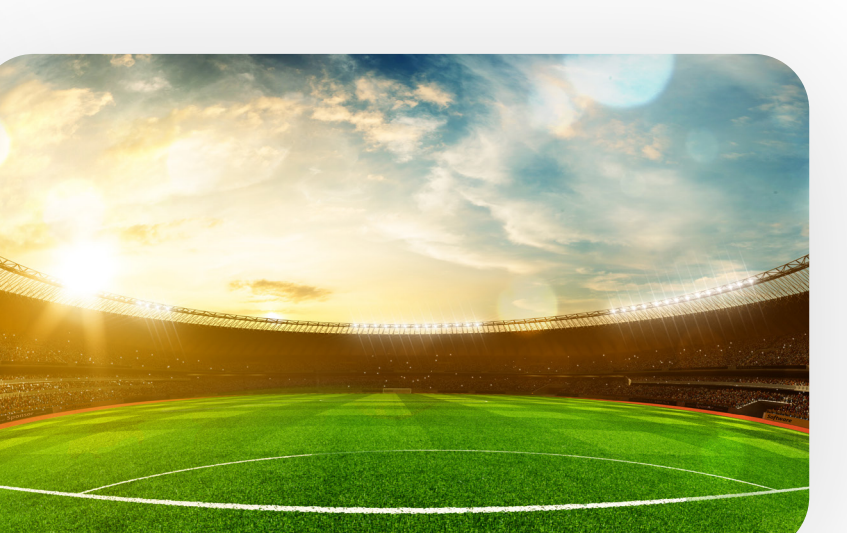
Airports



Factories



Motorways



Outdoor Stadiums

Product Showcase

Key Parameters

- Up to 15x optical zoom
- AcuSense technology
- 2 MP @ 50 / 60 fps
- 150 m IR light
- 120 dB WDR
- DC-iris
- 12 VDC, PoE: 802.3af



DS-2CD3A2662T-IZS
4.7-71 mm