

HikCentral Optimus ACT Integration

Requirements



When Hikvision device and Vanderbilt ACT Enterprise system are used in the same project, customers are always looking for a central management platform that can manage all devices. This is where **HikCentral Optimus Integration Solution** can help your business.

What we offer

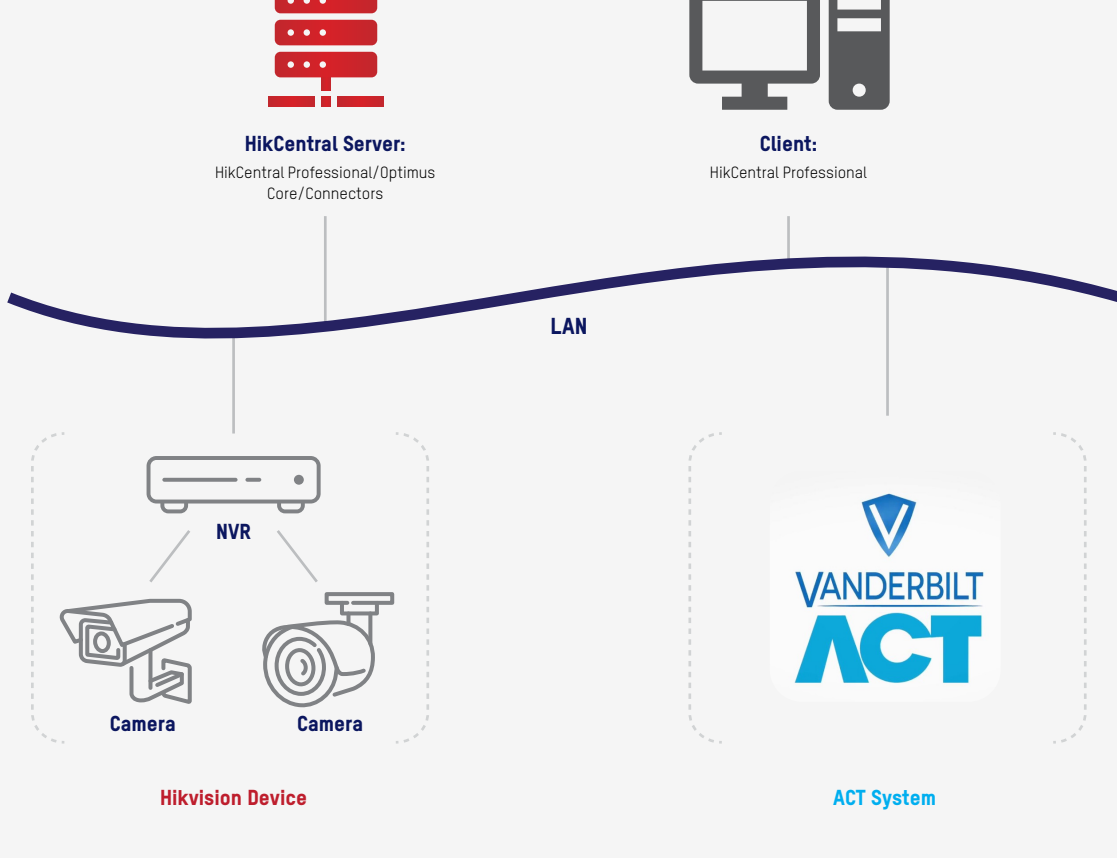


Integrate ACT Enterprise with HikCentral via **Optimus-Connector-Access Control** connector, providing:

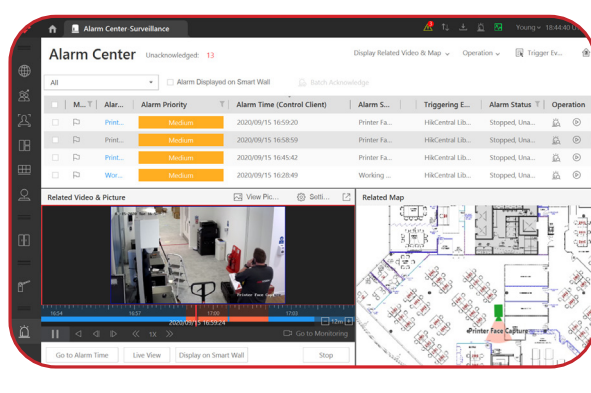
- Real-time two-way event linkage between Hikvision and third-party device/system, with retrievable event records on HikCentral.
- Central management of all devices/resources on HikCentral.
- Data synchronization from third party system to HikCentral.
- Health monitoring of third-party resource.

Solution Introduction

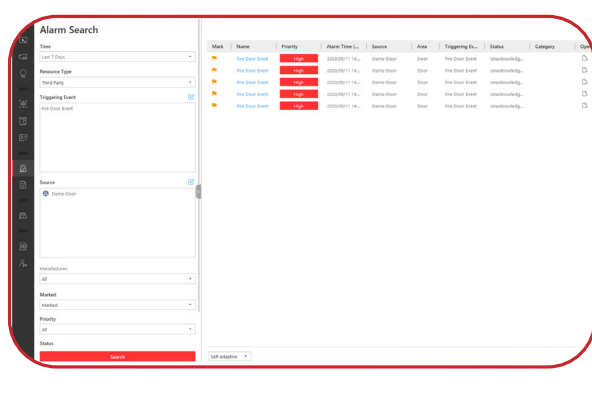
Solution Architecture



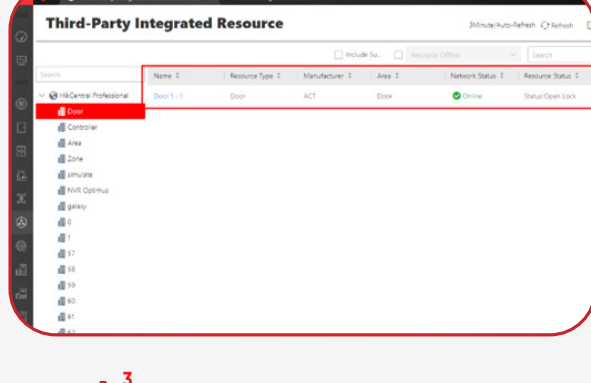
ACT Connector Feature Set



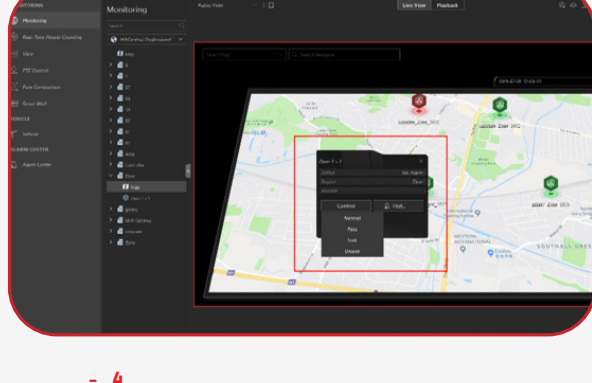
- 1. Receive real-time ACT zone/panel related events & alarms in HikCentral Alarm Center.



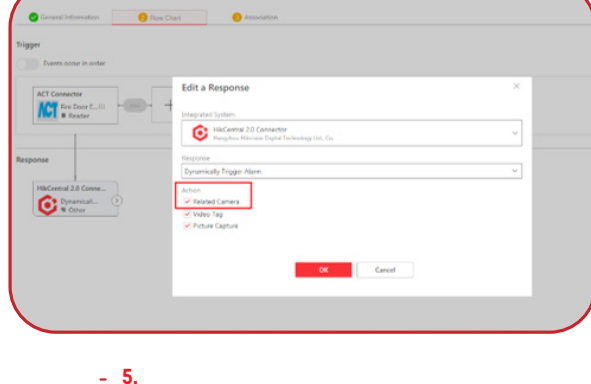
- 2. Search ACT alarm & event records in Control Client.



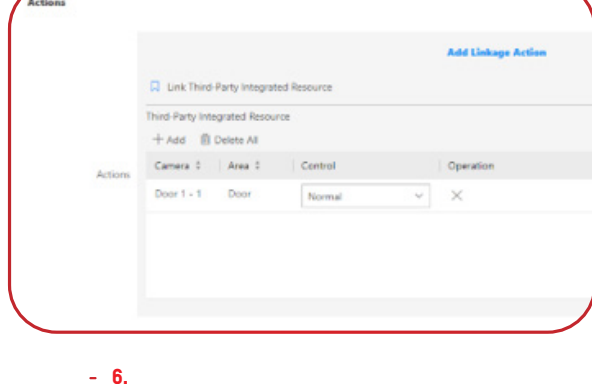
- 3. Synchronize ACT controller, door, input, output, zone, area (SPC panel) to HikCentral Area and Map manually or by schedule.



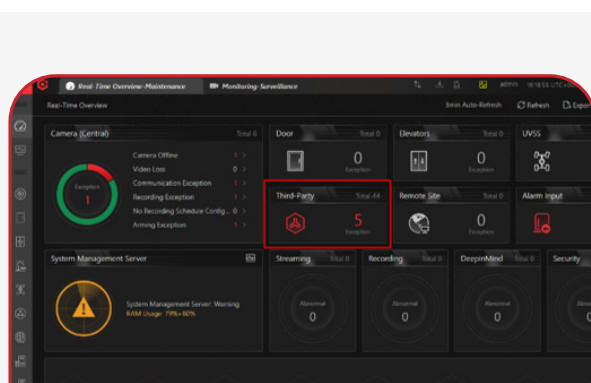
- 4. Display ACT related alarm on Map and control door and output status remotely, such as door unlock.



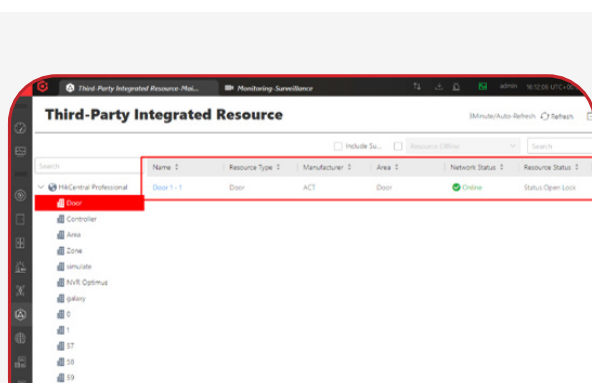
- 5. ACT event triggers HikCentral actions, for example, door forced open event triggers recording...



- 6. HikCentral event triggers ACT system actions, for example, block list face matched event triggers door remain locked...



- 7. Health monitoring dashboard for ACT door and output.



- 8. Details of door and output status.

Product Showcase

HikCentral Professional (based on v2.0 and later)

- Flexible, scalable, reliable and powerful central surveillance system.
- Supports live view, playback, access control, video intercom, visitor management, vehicle entrance and exit management, alarm management, personnel identification, BI dashboard, people counting report.



Hikvision Optimus (v1.2 and later)

- Optimus is a HikCentral event management hub that translates events and actions from third party integrations to HikCentral and Vice-Versa. Optimus provides multiple modules to allow users to connect third party applications such as Access Control, Alarm Monitoring Centers, Fire Panels, Heating Ventilation and air conditions etc.. to Hikvision VMS HikCentral.



Vanderbilt ACT Enterprise (V2.16.0.3 recommended)

- The role-based access control software suite for ACTpro hardware and streamlines the installation, management and monitoring of the ACTpro access control system.

