

CREATING SMART BUILDING MANAGEMENT SOLUTIONS TOGETHER



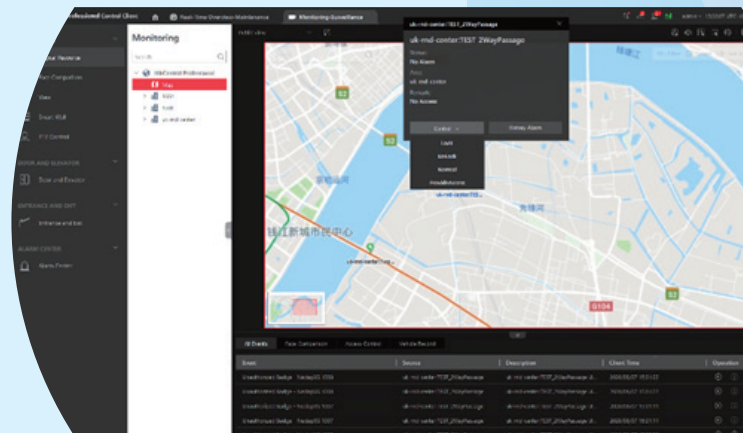
Streamlined access control & intrusion management

Increased situational awareness and access control with integration between AEOS and HikCentral





Operators in large monitoring/security centers have their work cut out for them, with a multitude of screens to keep an eye on. Many centers have different systems feeding into them, giving operators multiple output to watch. It's estimated that an individual can typically only fully concentrate on a specific area of a screen for around 20 minutes, so anything that can make this easier is always welcome.



The Nedap AEOS Connector for Hikvision's Optimus framework enables seamless integration of the AEOS software and/or individual Nedap hardware components into HikCentral. The Nedap Connector ensures bi-directional synchronization of access control and intrusion events, alarms, and person data, meaning operators do not have to monitor different systems

AEOS connects physical locks, readers and detectors to enhance the flow of people through customer locations and resources. The Nedap Connector for Optimus is targeting larger installations that require a single-interface operation of both Hikvision and Nedap systems. It provides events, alarm, and person data synchronization between AEOS connected hardware and HikCentral, and it allows operators to view the status of their doors and detectors in HikCentral Clients. It also allows users to operate doors, detectors, and intrusion areas as well as visually verify and handle alarms with just a few clicks in the Hikvision client.

The Optimus framework enables the system integrators in an easy way to tailor the integration for each installation, building suitable workflows and events-to-actions. This is based on a very intuitive and easy-to-use graphical user interface – no coding skills required. This means that the system integrator can create exactly the right mix between the AEOS and HikCentral that the customer requires.



KEY BENEFITS

The operator can:

- View the status of doors, detectors and intrusion areas
- Visually verify and handle alarms with just a few clicks
- Arm/disarm detectors/zones and open/close doors manually
- Build intelligent workflows and events-to-actions that increases responsiveness.



KEY FEATURES

- Both AEOS software and individual access controllers and detectors connected through HikCentral
- Bi-directional synchronization of person data either concurrently or per schedule
- Retrieval and display of extensive list of events and alarms from doors, detectors and intrusion zones in HikCentral alarm overview
- Search events and alarms
- View health status of doors and detectors, such as offline, tamper, low battery
- Version agnostic – systems easily upgraded without operational effect.

PRODUCT SHOWCASE

HikCentral Professional (based on v2.0 and later)

- Flexible, scalable, reliable and powerful central surveillance system.
- Supports live view, playback, access control, video intercom, visitor management, vehicle entrance and exit management, alarm management, personnel identification, BI dashboard, people counting report.



Hikvision Optimus (v1.2 and later)

- Optimus is a HikCentral event management hub that translates events and actions from third party integrations to HikCentral and Vice-Versa. Optimus provides multiple modules to allow users to connect third party applications such as Access Control, Alarm Monitoring Centers, Fire Panels, Heating Ventilation and air conditions etc.. to Hikvision VMS HikCentral.



Nedap AEOS (V2020.1 recommended)

- Access control offers a secure, convenient, flexible and cost-effective way of controlling who has access to your building and when that access is allowed.

