

The logo consists of a red horizontal bar with a white diagonal stripe on the left side. The word "HIKVISION" is written in white, italicized, uppercase letters on the red background.

HIKVISION

Acoustic Imager

Quick Start Guide

About this Document

- This Document includes instructions for using and managing the Product. Pictures, charts, images and all other information hereinafter are for description and explanation only.
- The information contained in the Document is subject to change, without notice, due to firmware updates or other reasons. Please find the latest version of the Document at the Hikvision website (<https://www.hikvision.com>). Unless otherwise agreed, Hangzhou Hikvision Digital Technology Co., Ltd. or its affiliates (hereinafter referred to as "Hikvision") makes no warranties, express or implied.
- Please use the Document with the guidance and assistance of professionals trained in supporting the Product.

About this Product

This product can only enjoy the after-sales service support in the country or region where the purchase is made.

Acknowledgment of Intellectual Property Rights

- Hikvision owns the copyrights and/or patents related to the technology embodied in the Products described in this Document, which may include licenses obtained from third parties.
- Any part of the Document, including text, pictures, graphics, etc., belongs to Hikvision. No part of this Document may be excerpted, copied, translated, or modified in whole or in part by any means without written permission.
- **HIKVISION** and other Hikvision's trademarks and logos are the properties of Hikvision in various jurisdictions.
- Other trademarks and logos mentioned are the properties of their respective owners.

LEGAL DISCLAIMER

- TO THE MAXIMUM EXTENT PERMITTED BY APPLICABLE LAW, THIS DOCUMENT AND THE PRODUCT DESCRIBED, WITH ITS HARDWARE, SOFTWARE AND FIRMWARE, ARE PROVIDED "AS IS" AND "WITH ALL FAULTS AND ERRORS". HIKVISION MAKES NO WARRANTIES, EXPRESS OR IMPLIED, INCLUDING WITHOUT LIMITATION, MERCHANTABILITY, SATISFACTORY QUALITY, OR FITNESS FOR A PARTICULAR PURPOSE. THE USE OF THE PRODUCT BY YOU IS AT YOUR OWN RISK. IN NO EVENT WILL HIKVISION BE LIABLE TO YOU FOR ANY SPECIAL, CONSEQUENTIAL, INCIDENTAL, OR INDIRECT DAMAGES, INCLUDING, AMONG OTHERS, DAMAGES FOR LOSS OF BUSINESS PROFITS, BUSINESS INTERRUPTION, OR LOSS OF DATA, CORRUPTION OF SYSTEMS, OR LOSS OF DOCUMENTATION, WHETHER BASED ON BREACH OF CONTRACT, TORT (INCLUDING NEGLIGENCE), PRODUCT LIABILITY, OR OTHERWISE, IN CONNECTION WITH THE USE OF THE PRODUCT, EVEN IF HIKVISION HAS BEEN ADVISED OF THE POSSIBILITY OF SUCH DAMAGES OR LOSS.
- YOU ACKNOWLEDGE THAT THE NATURE OF THE INTERNET PROVIDES FOR INHERENT

SECURITY RISKS, AND HIKVISION SHALL NOT TAKE ANY RESPONSIBILITIES FOR ABNORMAL OPERATION, PRIVACY LEAKAGE OR OTHER DAMAGES RESULTING FROM CYBER-ATTACK, HACKER ATTACK, VIRUS INFECTION, OR OTHER INTERNET SECURITY RISKS; HOWEVER, HIKVISION WILL PROVIDE TIMELY TECHNICAL SUPPORT IF REQUIRED.

- YOU AGREE TO USE THIS PRODUCT IN COMPLIANCE WITH ALL APPLICABLE LAWS, AND YOU ARE SOLELY RESPONSIBLE FOR ENSURING THAT YOUR USE CONFORMS TO THE APPLICABLE LAW. ESPECIALLY, YOU ARE RESPONSIBLE, FOR USING THIS PRODUCT IN A MANNER THAT DOES NOT INFRINGE ON THE RIGHTS OF THIRD PARTIES, INCLUDING WITHOUT LIMITATION, RIGHTS OF PUBLICITY, INTELLECTUAL PROPERTY RIGHTS, OR DATA PROTECTION AND OTHER PRIVACY RIGHTS. YOU SHALL NOT USE THIS PRODUCT FOR ANY PROHIBITED END-USES, INCLUDING THE DEVELOPMENT OR PRODUCTION OF WEAPONS OF MASS DESTRUCTION, THE DEVELOPMENT OR PRODUCTION OF CHEMICAL OR BIOLOGICAL WEAPONS, ANY ACTIVITIES IN THE CONTEXT RELATED TO ANY NUCLEAR EXPLOSIVE OR UNSAFE NUCLEAR FUEL-CYCLE, OR IN SUPPORT OF HUMAN RIGHTS ABUSES.
- IN THE EVENT OF ANY CONFLICTS BETWEEN THIS DOCUMENT AND THE APPLICABLE LAW, THE LATTER PREVAILS.

© Hangzhou Hikvision Digital Technology Co., Ltd. All rights reserved.

Regulatory Information

These clauses apply only to the products bearing the corresponding mark or information.

EU/UK Compliance Statement



This product and - if applicable - the supplied accessories too are marked with "CE" and comply therefore with the applicable harmonized European standards listed under the Directive 2014/30/EU (EMCD), Directive 2014/35/EU (LVD), Directive

2011/65/EU (RoHS).



This product and - if applicable - the supplied accessories too are marked with "UKCA" and comply therefore with the following directives: Radio Equipment Regulations 2017, Electromagnetic Compatibility Regulations 2016, Electrical Equipment (Safety)

Regulations 2016, the Restriction of the Use of Certain Hazardous Substances in Electrical and Electronic Equipment Regulations 2012.

Hereby, Hangzhou Hikvision Digital Technology Co., Ltd. declares that this device (refer to the label) is in compliance with Directive 2014/53/EU.

The full text of the EU declaration of conformity is available at the following internet address:

<https://www.hikvision.com/en/support/compliance/declaration-of-conformity>.

Frequency Bands and Power (for CE/UKCA)

The frequency bands and transmitting power (radiated and/or conducted) nominal limits applicable to the following radio equipment are as follows:

Equipment Model	Frequency Bands and Power
DS-QAxx-PG	GSM850 (824 – 849 MHz): 32.5±1.5 dBm, GSM900 (880 – 915 MHz): 32.5±1.5 dBm, DCS1800 (1710 – 1785 MHz): 29.5±1.5 dBm, WCDMA Band I (1920 – 1980 MHz): 23.5±2 dBm, WCDMA Band V (824 – 849 MHz): 23.5±2 dBm, WCDMA Band VIII (880 – 915 MHz): 23.5±2 dBm, LTE Band 1 (1920 – 1980 MHz): 23±2 dBm class 3, LTE Band 3 (1710 – 1785 MHz): 23±2 dBm class 3, LTE Band 5 (824 – 849 MHz): 23±2 dBm class 3, LTE Band 7 (2500 – 2570 MHz): 23±2 dBm class 3, LTE Band 8 (880 – 915 MHz): 23±2 dBm class 3, LTE Band 20 (832 – 862 MHz): 23±2 dBm class 3, LTE Band 28 (703 – 748 MHz): 23±2 dBm class 3, LTE Band 38 (2570 – 2620 MHz): 23±2 dBm class 3, LTE Band 40 (2300 – 2400 MHz): 23±2 dBm class 3, LTE Band 41 (2555 – 2655 MHz): 23±2 dBm class 3

For the device without a supplied power adapter, use the power adapter provided by a qualified manufacturer. Refer to the product specification for detailed power requirements.

For the device without a supplied battery, use the battery provided by a qualified manufacturer. Refer to the product specification for detailed battery requirements.



Directive 2012/19/EU (WEEE Directive): Products marked with this symbol cannot be disposed of as unsorted municipal waste in the European Union. For proper recycling, return this product to your local supplier upon the purchase of equivalent new equipment, or dispose of it at designated collection points. For more information

see: www.recyclethis.info.

According to the Waste Electrical and Electronic Equipment Regulations 2013: Products marked with this symbol cannot be disposed of as unsorted municipal waste in the United Kingdom. For proper recycling, return this product to your local supplier upon the purchase of equivalent new equipment, or dispose of it at designated collection points. For more information see:

www.recyclethis.info.



Directive 2006/66/EC and its amendment 2013/56/EU (Battery Directive): This product contains a battery that cannot be disposed of as unsorted municipal waste in the European Union. See the product documentation for specific battery information. The battery is marked with this symbol, which may include lettering to indicate cadmium (Cd), lead (Pb), or mercury (Hg). For proper recycling, return the battery to your supplier or to a designated collection point. For more information see: www.recyclethis.info.

According to the Batteries and Accumulators (Placing on the Market) Regulations 2008 and the Waste Batteries and Accumulators Regulations 2009: This product contains a battery that cannot be disposed of as unsorted municipal waste in the United Kingdom. See the product documentation for specific battery information. The battery is marked with this symbol, which may include lettering to indicate cadmium (Cd), lead (Pb), or mercury (Hg). For proper recycling, return the battery to your supplier or to a designated collection point. For more information see: www.recyclethis.info.

Industry Canada ICES-003 Compliance

This device meets the CAN ICES-003 (B)/NMB-003 (B) standards requirements. This device complies with Industry Canada licence-exempt RSS standard(s). Operation is subject to the following two conditions:

- (1) this device may not cause interference, and
- (2) this device must accept any interference, including interference that may cause undesired operation of the device.

Cet appareil répond aux exigences des normes CAN ICES-003 (B)/NMB-003 (B). Cet appareil est conforme aux normes RSS exemptes de licence d'Industrie Canada. Son fonctionnement est soumis aux deux conditions suivantes :

- (1) cet appareil ne doit pas causer d'interférences, et
- (2) cet appareil doit accepter toute interférence reçue, notamment les interférences susceptibles d'occasionner un fonctionnement indésirable de l'appareil.

This equipment complies with IC RSS-102 radiation exposure limits set forth for an uncontrolled environment. This equipment should be installed and operated with minimum distance 20cm between the radiator & your body.



Cet appareil est conforme aux limites d'exposition au rayonnement IC RSS-102 établies pour un environnement non contrôlé. Cet équipement doit être installé et utilisé à une distance minimale de 20 cm entre la source du rayonnement et votre corps.

Safety Information

Please read all the safety information carefully before using.

- In the use of the product, you must be in strict compliance with the electrical safety regulations of the nation and region.
- Please understand that you have the responsibility to configure all the passwords and other security settings about the device, and keep your user name and password.
- Set up device time manually for the first time access if the local time is not synchronized with that of the network. Visit the device via Web browse/client software and go to time settings interface.
- Device powered by Safety Extra-Low Voltage (SELV): The power source should meet limited power source or PS2 requirements according to IEC 60950-1 or IEC 62368-1 standard.
- For the device powered on and off only by power plug and socket-outlet, the socket-outlet shall be installed near the device and easily accessible.
- This equipment shall be installed incorporated with UPS to avoid the risk of restart.
- Use the power adapter that can work normally at an altitude over 2000 meters above sea level.
- Do not dispose of the battery into fire or a hot oven, or mechanically crush or cut the battery, which may result in an explosion.
- Do not leave the battery in an extremely high temperature surrounding environment, which may result in an explosion or the leakage of flammable liquid or gas.
- Do not subject the battery to extremely low air pressure, which may result in an explosion or the leakage of flammable liquid or gas.
- Dispose of used batteries according to the instructions.



- For the device with sticker  or , pay attention to the following cautions:

CAUTION: Hot parts! Do not touch. Burned fingers when handling the parts. Wait one-half hour after switching off before handling the parts.

This sticker is to indicate that the marked item can be hot and should not be touched without taking care. For device with this sticker, this device is intended for installation in a restricted access location, access can only be gained by service persons or by users who have been instructed about the reasons for the restrictions applied to the location and about any precautions that shall be taken.
- Do not install devices for professional use in locations where children are likely to appear.
- If the device needs to be installed on the wall or ceiling, install the device according to the instructions in Quick Start Guide. Attach the device properly to the floor/wall in accordance with the installation instructions to prevent injury.
- For the device with supplement light (refer to datasheet for details):

Possibly hazardous optical radiation emitted from this product.

DO NOT stare at operating light source. May be harmful to the eyes.

Wear appropriate eye protection or DO NOT turn on the light when you assemble, install or maintain the device.
- For the battery with + and - signs, + identifies the positive terminals of the device which is used with or generates direct current, and - identifies the negative terminals of the device which is used with or generates direct current.
- Do not touch the bare components (such as the metal contacts of the inlets) and wait for at least 5 minutes, since electricity may still exist after the device is powered off.
- No naked flame sources, such as lighted candles, should be placed on the device.
- Never place the device in an unstable location. The device may fall, causing serious personal injury or death.
- If the device needs to be wired by yourself, select the corresponding wire to supply power according to the electric parameters labeled on the device. Strip off wire with a standard wire stripper at corresponding position. To avoid serious consequences, the length of stripped wire shall

be appropriate, and conductors shall not be exposed.

- Make sure that the power has been disconnected before you wire, install, or disassemble the device.
- If smoke, odor, or noise arises from the device, immediately turn off the power, unplug the power cable, and contact the service center.

Table of Contents

1 Cables and Interfaces	1
2 Installation	2
2.1 Wall Mount	2
2.1.1 Wall Mount (U-Steel).....	2
2.1.2 Wall Mount (Wall)	7
2.2 Pendant Mount	8
2.3 Tripod Mount	11
2.4 Clamp Mount	12
2.5 Waterproof Measures.....	15
2.5.3 Install Network Cable Waterproof Jacket	15
2.5.4 Waterproof Other Cables	16
3 Activate and Access	17

1 Cables and Interfaces

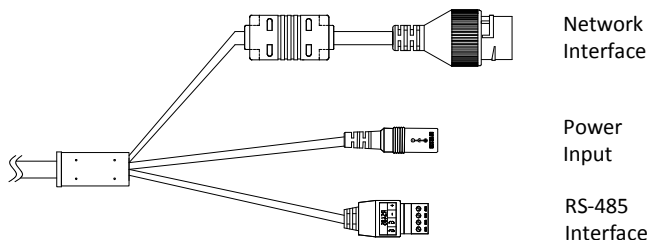


Figure 1-1 Cables

- Network interface: used for network communication, and also supports PoE power input.
- Power input: 12 VDC power input.
- RS-485 Interface: the camera or platform can be externalized.

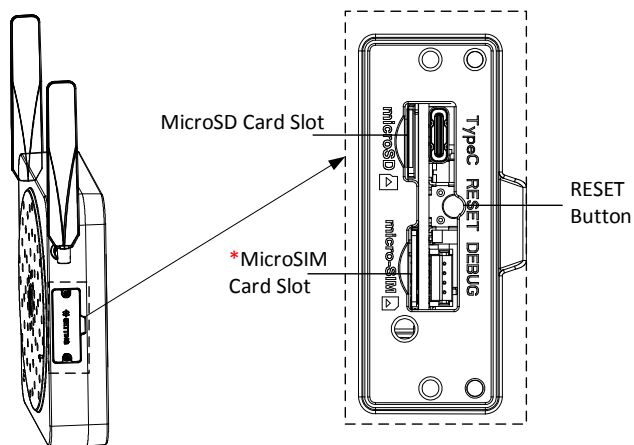


Figure 1-2 Interfaces

- MicroSD Card Slot: It is used to insert the MicroSD card for local storage.
- *MicroSIM Card Slot: It is used to insert the MicroSIM card to connect to network. Only certain models support MicroSIM card slot. Please refer to the actual device for details.
- RESET Button: Used to restore the factory settings of the device.

2 Installation

2.1 Wall Mount

2.1.1 Wall Mount (U-Steel)

1. Loosen the screws on the slot cover and remove the cover. Insert MicroSD/*MicroSIM card into the card slot. Replace the slot cover.

Note :

Only certain models support MicroSIM card slot. Please refer to the actual device for details.

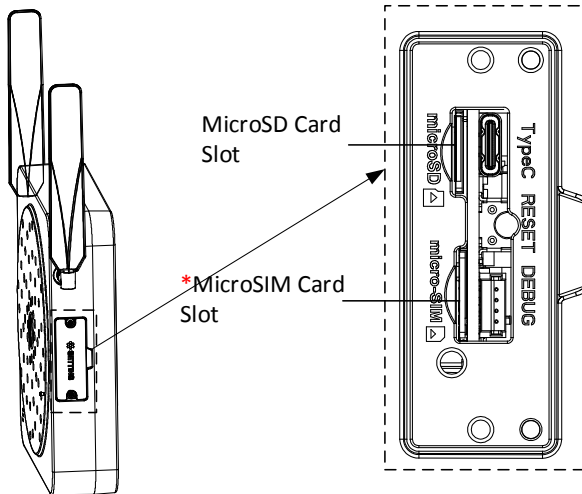


Figure 2-1 Install MicroSD/*MicroSIM Card

2. Remove the 12 screws (M6 × 12) on the cardan joint, and split the bracket into bracket 1/2/3.

Note :

Please properly keep the removed screws.

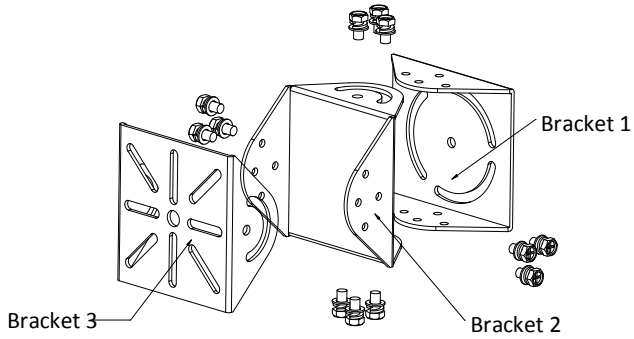


Figure 2-2 Split Bracket

3. Paste the drill template to the surface of the U-steel and drill 3 holes ($\varnothing 6.2$ to 8 mm).

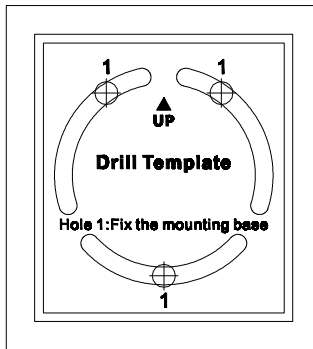


Figure 2-3 Drill Holes

4. Use 3 bolts and nuts (M6 × 20) to fix the bracket 1 to the U-steel as shown.

Note :

For the purpose of description, the component completed in this installation step will be referred to as Component 1.

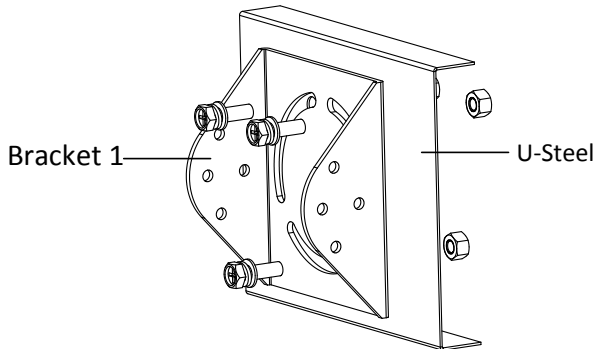


Figure 2-4 Fixed Bracket 1 to U-Steel

5. Use 4 screws (M6 × 12) to fix the bracket 2 to the component 1.

Note :

- To make sure the angle is adjusted, do not tighten the screws.
- For the purpose of description, the component completed in this installation step will be referred to as component 2.

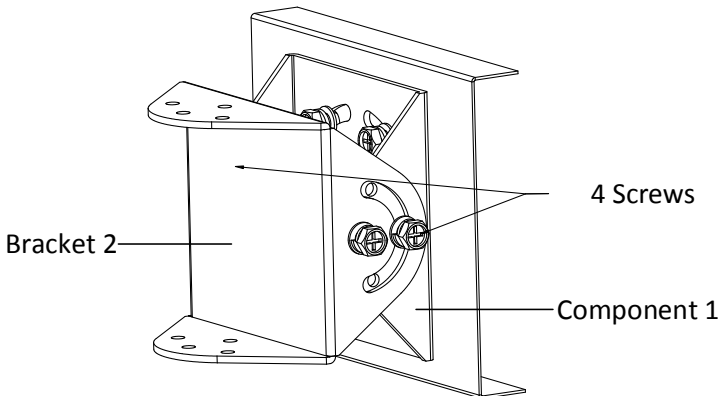


Figure 2-5 Fixed Bracket 2 to Component 1

6. Use 4 screws (1/4-20UNC × 12) to fix the bracket 3 to the device.

Note :

For the purpose of description, the component completed in this installation step will be referred to as Component 3.

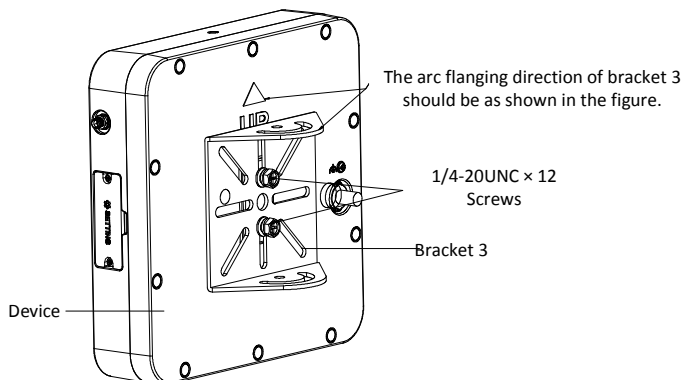


Figure 2-6 Fixed Bracket 3 to Device

- Use 4 screws (M6 × 12) to fix the component 2 to the component 3.

Note :

- To make sure the angle is adjusted, do not tighten the screws.
- For the purpose of description, the component completed in this installation step will be referred to as component 4.

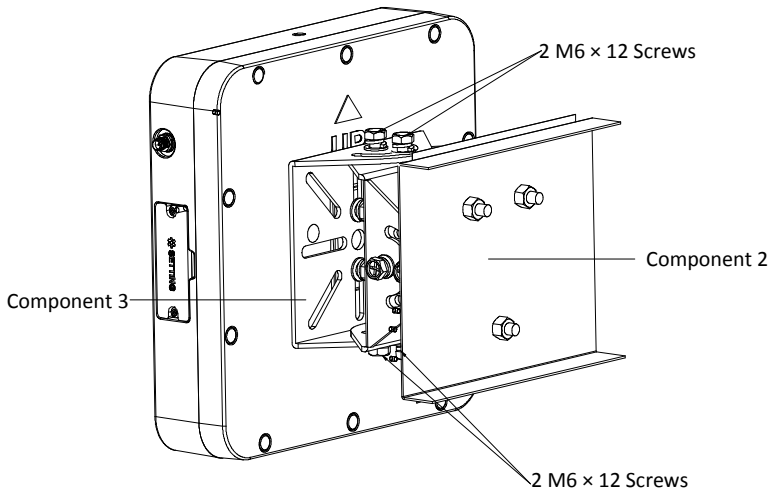


Figure 2-7 Fixed Component 2 to Component 3

- *Thread 2 4G antennas to the SMA interface of the device, and fold the antennas to 90°.

Note :

Only certain models support 4G antennas. Please refer to the actual device for details.

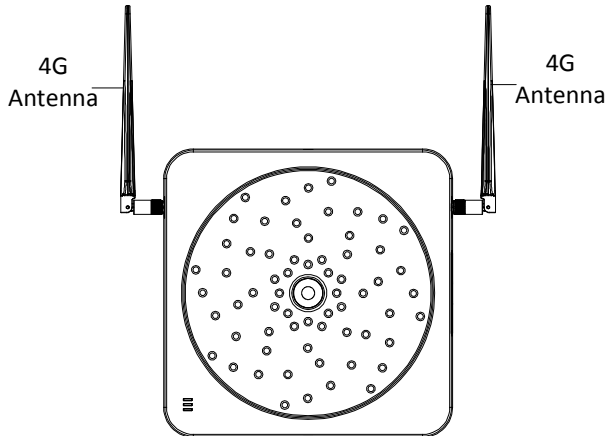


Figure 2-8 *Install Antenna

9. Adjust the angle.

- Adjust device angle: Adjust the horizontal and vertical angle of the device by loosening the 8 screws shown in the picture below.
- *Adjust antenna angle: Adjust the antenna angle by rotating the antenna connection.

Note :

Only certain models support 4G antennas. Please refer to the actual device for details.

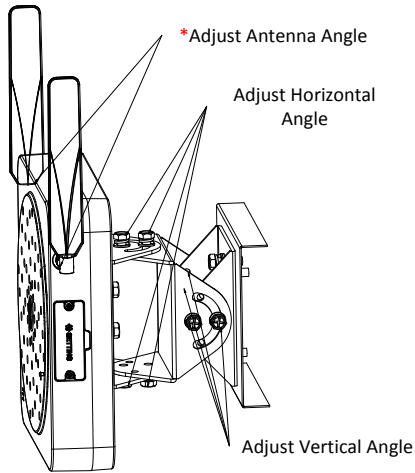


Figure 2-9 Angle Adjustment

10. *Use the waterproof tapes to wrap up the antenna connection.

Note :

Only certain models support 4G antennas. Please refer to the actual device for details.

11. Remove the protective film on the front of the device.

2.1.2 Wall Mount (Wall)

1. Refer to step 1 and step 2 in 2.1.1 Wall Mount (U-Steel) to install MicroSD card/*MicroSIM card and split the bracket.
2. Paste the drill template to the wall, drill 3 holes with a depth of 60 mm in the wall using the $\varnothing 10$ mm impact drill bit, and insert the 3 metal expansion bolts (M6 \times 68) into the hole.

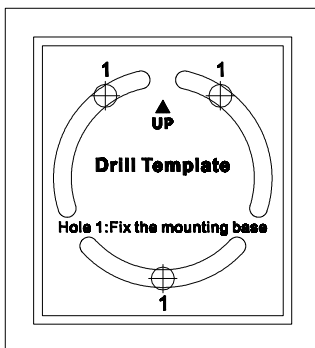


Figure 2-10 Drill Holes

- Secure the 3 nuts with the open-ended wrench or sleeve, and fix the bracket 1 to the wall.

Note :

For the purpose of description, the component completed in this installation step will be referred to as Component 1.

3 Metal Expansion Blots
(M6 × 68)

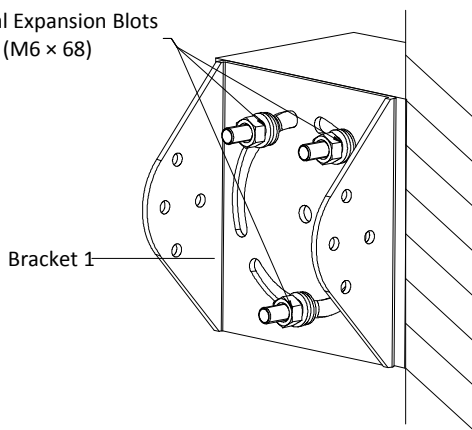


Figure 2-11 Fixed Bracket 1 to Wall

- Please refer to step 5 to step 11 in 2.1.1 Wall Mount (U-Steel) to complete the installation.

2.2 Pendant Mount

The pendant bracket needs to be purchased separately.

1. Refer to step 1 in 2.1.1 Wall Mount (U-Steel) to install MicroSD card/*MicroSIM card.
2. Paste the drill template to the wall, drill 3 holes with a depth of 25 mm in the wall using the $\varnothing 5.5$ mm impact drill bit, and inserts the 3 plastic expansion bolts (M4) into the hole.

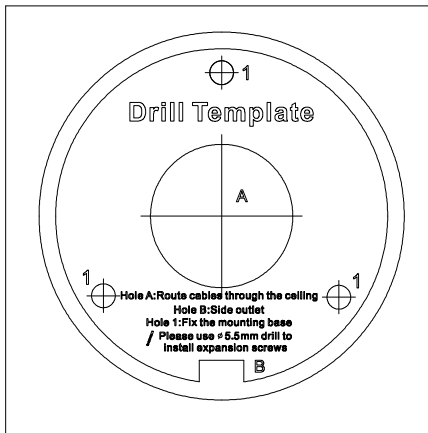


Figure 2-12 Drill Holes

3. Screw the arm of the pendant bracket into the opening on the top of the device, and use the open-ended wrench to tighten the hex nut on the bracket.

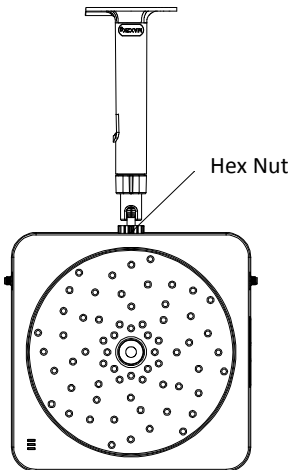


Figure 2-13 Fixed device to Pendant Bracket

4. Use 3 self-tapping screws to fix the pendant bracket on the plastic expansion blots.

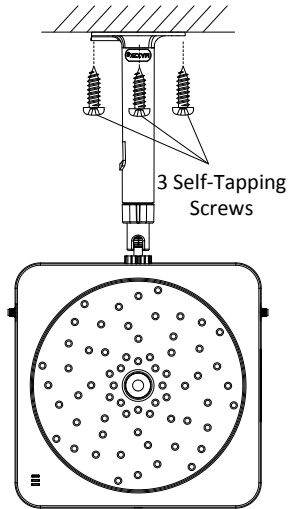


Figure 2-14 Fixed Pendant Bracket to Plastic Expansion Blots

5. Adjust the angle of the device by the adjusting handle on the bottom of the bracket.

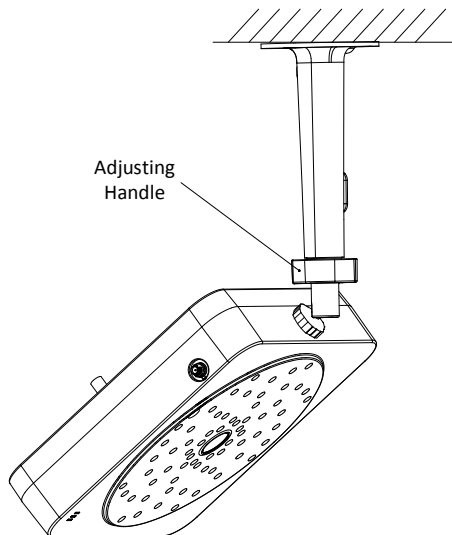


Figure 2-15 Fixed Bracket 3 to Device

6. Refer to step 8 and step 9 in 2.1.1 Wall Mount (U-Steel) to install 4G antennas.

Note :

Only certain models support 4G antennas. Please refer to the actual device for details.

7. *Use the waterproof tapes to wrap up the antenna connection.

Note :

Only certain models support 4G antennas. Please refer to the actual device for details.

8. Remove the protective film on the front of the device.

2.3 Tripod Mount

The tripod needs to be purchased separately.

1. Refer to step 1 in 2.1.1Wall Mount (U-Steel) to install MicroSD card/*MicroSIM card.
2. Refer to step 8 in 2.1.1 Wall Mount (U-Steel) to install 4G antennas.

Note :

Only certain models support 4G antennas. Please refer to the actual device for details.

3. Rotate the tripod into the hole of the bottom of the device, and use the open-ended wrench to tighten the hex nut on the bracket.

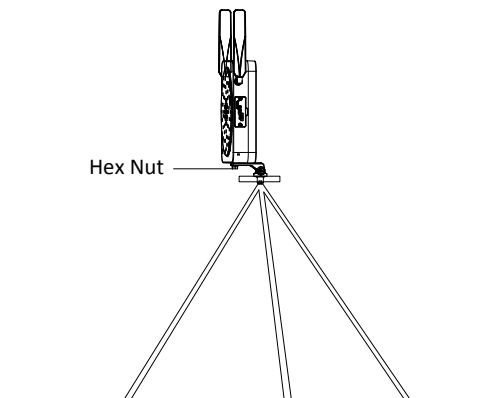


Figure 2-16 Fixed device to Tripod

4. Refer to step 9 in 2.1.1 Wall Mount (U-Steel) to adjust 4G antenna angle.

Note :

Only certain models support 4G antennas. Please refer to the actual device for details.

5. *Use the waterproof tapes to wrap up the antenna connection.

Note :

Only certain models support 4G antennas. Please refer to the actual device for details.

6. Remove the protective film on the front of the device.

2.4 Clamp Mount

The device supports clamp mount (horizontal/vertical pole mount). The clamp bracket should be purchased separately.

1. Refer to step 1 in 2.1.1Wall Mount (U-Steel) to install MicroSD card/*MicroSIM card
2. Loosen the 6 screws (M6 × 12) on the clamp bracket with the cross driver, and unscrew the clamp ring with the straight-leg driver to split the bracket into bracket 1/2/3.

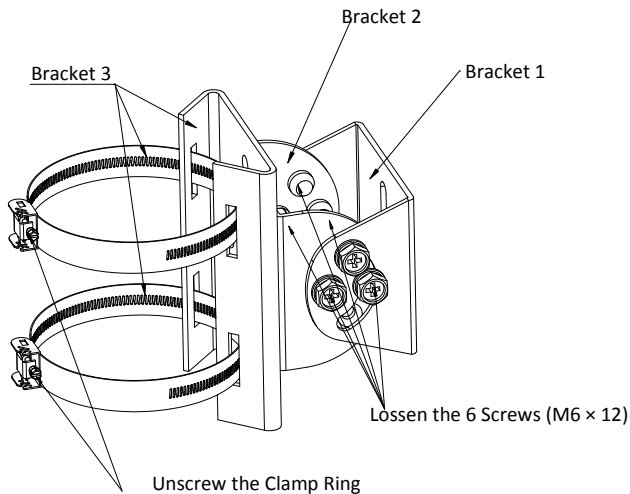


Figure 2-17 Split Bracket

3. Put the horizontal/vertical pole into the clamp ring, and then fix the bracket 2 to the bracket 3 with 3 screws (M6 × 12).

Note :

For the purpose of description, the component completed in this installation step will be referred to as Component 1.

Note: When you choose vertical pole mount, the arc flanging direction of bracket 2 should be as shown in the figure.

Note: When you choose horizontal pole mount, the arc flanging direction of bracket 2 should be as shown in the figure.

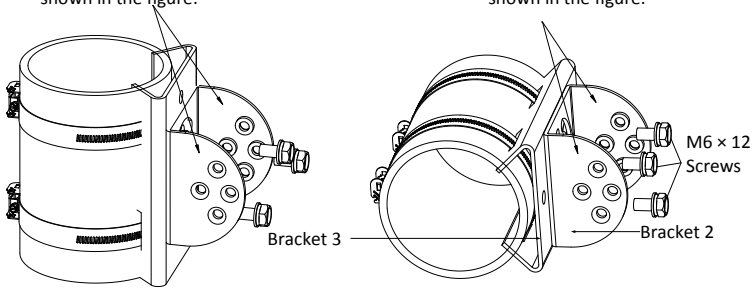


Figure 2-18 Fixed Bracket 2 to Bracket 3

- Use 2 screws (1/4-20UNC x 12), to fix the bracket 1 to the device.

Note :

For the purpose of description, the component completed in this installation step will be referred to as component 2.

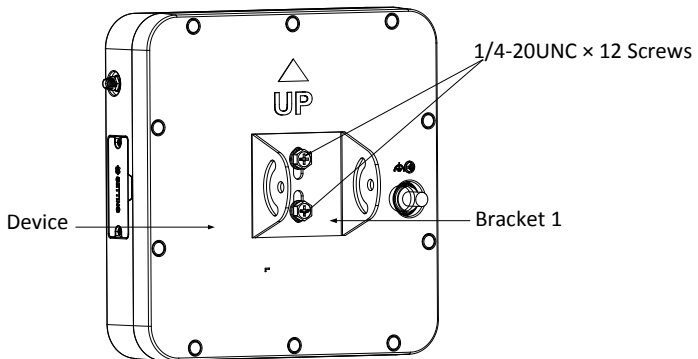


Figure 2-19 Fixed Bracket 1 to Device

- Use 4 screws (M6 x 12) to fix component 1 to component 2.

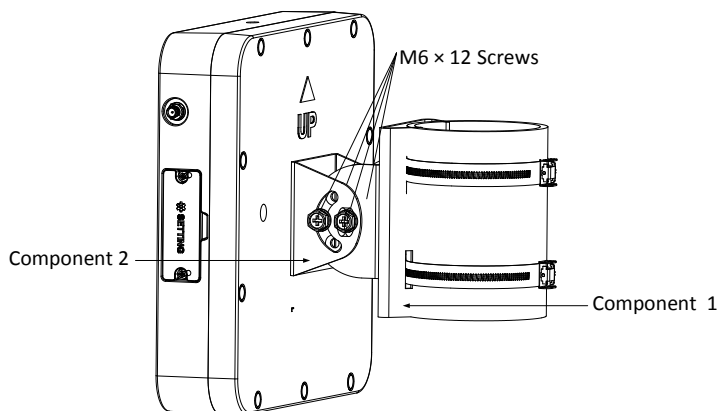


Figure 2-20 Fixed Component 1 to Component 2

6. Refer to step 8 in 2.1.1 Wall Mount (U-Steel) to install 4G antennas.

Note :

Only certain models support 4G antennas. Please refer to the actual device for details.

7. Adjust the angle.

- Adjust device angle: Adjust the horizontal and vertical angle of the device by loosening the 4 screws in the bracket and 2 screws in the clamp ring shown in the picture below.
- *Adjust antenna angle: Adjust the antenna angle by rotating the antenna connection.

Note :

- Horizontal and vertical angles of the device can be adjusted when the you choose vertical pole mount.
- Only vertical angles of the device can be adjusted when the you choose horizontal pole mount.
- Only certain models support 4G antennas. Please refer to the actual device for details.

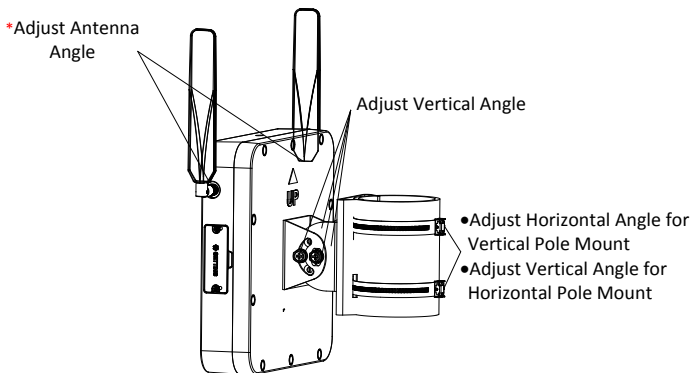


Figure 2-21 Angle Adjustment

8. *Use the waterproof tapes to wrap up the antenna connection.

Note :

Only certain models support 4G antennas. Please refer to the actual device for details.

9. Remove the protective film on the front of the device.

2.5 Waterproof Measures

If the device is installed outdoor, you should use the waterproof accessory or tapes to waterproof the cables. Otherwise, the cables might get wet or a short circuit occurs.

2.5.3 Install Network Cable Waterproof Jacket

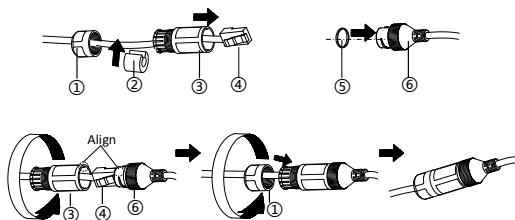


Figure 2-22 Install Waterproof Jacket

1. Feed the network cable through ① and ③ in order.
2. Fix ② on the network cable between ① and ③.
3. Place ⑤ onto the end of ⑥, and plug the RJ45 male connector into RJ45 female connector.
4. Screw ③ to ⑥ clockwise.
5. Push ② into ③.

6. Secure ① with the ③ in clockwise direction.

2.5.4 Waterproof Other Cables

After routing and connecting the cables, use the waterproof tapes to wrap up the cables. Connected cables and spare cables both should be wrapped up as the figures below.

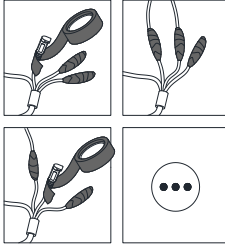


Figure 2-23 Waterproof Cables

3 Activate and Access

Scan the QR code to get *Activate and Visit*. Note that mobile data charges may apply if Wi-Fi is unavailable.



