

DS-PWA32-H

Wireless Security Control Panel UD11740B-A



ENGLISH

Diagram References

1 Appearance

Note: The function of GPRS or 3/4G (implemented with built-in SIM card slot) depends on the model of the device.

- ① AC Power
- ② Fault
- ③ Link
- ④ Power On
- ⑤ System Fault
- ⑥ No Fault
- ⑦ Alarm
- ⑧ Hik-connect account
- ⑨ Panel is added to Hik-connect account
- ⑩ Panel is not added to Hik-connect account
- ⑪ Arm /Disarm
- ⑫ Alarm
- ⑬ Alarm Occurred
- ⑭ Device Tampered
- ⑮ No Alarm
- ⑯ SIM Card Slot
- ⑰ Tamper Spring
- ⑱ Reset Button
- ⑲ AP&STA Switch
- ⑳ Battery Connector
- ㉑ Network Interface
- ㉒ Power Interface

Note: Remove the rear cover, and some of the components and interfaces are on the rear panel.

2 Installation

- Loosen the screw on the rear cover. Slide down the rear cover and remove it from the control panel.
- Insert a SIM card into the SIM card slot.
- Connect the battery to the control panel.
- Connect the power adapter to the control panel and a power outlet. The power indicator turns green about 30s later, which means that the device is powered on.

Note: The condition of no SIM card, no battery, AC power off, or network disconnected, will cause Control Panel Fault.

- Connect the Ethernet cable to an internet outlet. While the device is added to a Hik-Connect account, the link indicator turns green.
- Secure the rear cover in the installation position with the supplied screws. Attach the control panel on the rear cover, and tighten the rear cover screw to complete the installation.

★ Side Opening

If you need to route the cable through the bottom of the panel, remove the sheet of the side opening.

★ TAMPER Screw

It is compulsory to secure the TAMPER screw.

3 Set Up

Set up via APP

- Log into the App Store or Google Play and input Hik-Connect to search and install the mobile client.
- Log into the APP with Hik-Connect account.
- Tap Add Device. Scan the device QR code on the rear panel (on the label).
- Tap Connect to a Network. Select Wireless Connection (AP) as the connection mode.
- Push the AP/STA mode switch to the AP position, tap Confirm.
- Tap Connect to Wi-Fi on the prompt-up window. Select and connect to a stable Wi-Fi, and click Next.
- Create a password to activate the device.
- Push the AP/STA mode switch to the STA position.

Note: You need to enter the Verification Code (on the device label which is pasted on the rear panel) before activation if you add the device by entering the device serial No.(SN).

Set up via Web Client

Log into the Web Client

Default IP Address when using mobile browser in the AP mode: 192.168.8.1. The device must be in the AP mode.

Default IP Address when connecting the network cable with computer directly: 192.0.0.64

Input the device IP address in the address bar of the web browser. Create a password to activate the device and log into the web client.

Add a Camera for the Zone

- Click System-Network Camera, and you can add two cameras for the control panel.
- Click Wireless Device-Zone, select a zone, click the Settings icon, and select a camera to link with the zone.

You can also link a camera with the zone via APP, refer to the Wireless Security Control Panel User Manual for details.

Configure Video-Push

You can view the alarm video via APP and email. For detailed settings, refer to Security Control Panel User Manual.

Set up via 4200 Client

- Download and install the VMMS-4200 client.

Note: Get the client software from the official website: www.hikvision.com.

- Enter Device Management page, select the device in the Online Device List, click Edit Network Settings, change the port as 80, and click Add to Client.

Note: You should activate the device for the first usage.

★ For multi-language switch, refer to Security Control Panel User Manual (scan the QR code) for details.

4 Function Button Operation

Note: Add card or keyfob via the web client before adding peripheral device for clearing tampering alarm.

Add Peripheral Device

While the control panel is not in the configuration mode, press the function button on the side of the control panel once and trigger a peripheral device.

Note: Keyfobs cannot be added by function button operation.

Check RF Signal

While the control panel is not in the configuration mode, double press the function button, and you can check the RF signal strength on the peripheral device.

Specification

Wireless Device Connection	Alarm Input	32
	Alarm Output	32
	Siren	2
	Keyfob	8
Interaction	Partition	1
	Audio Output	1, 1.5W
RF	RF Frequency	433MHz
	RF Modulation	2GFSK
	RF Distance	800m (Open Area)
Wired Network	Ethernet	10M/100M Self-adaptive
Cellular Network	GPRS, 3/4G	Supports report push-notification to ARC & Cloud, text notification via SMS, and audio notification via phone call
	Standard	802.11b/g/n
Wi-Fi	Encryption	Supported
	Channel	2, 4G
Application & Protocol	Application	VMMS-4200, and mobile APP
	Protocol	SIA, Contact ID
User	User	13 (1 Installer, 1 Administrator, and 11 General User)
	Power	5 VDC, 10W
Others	Consumption (without HDD)	<5.6W
	Operation Temperature	-10°C to 55°C
	Operation Humidity	10% to 90%
	Shell Material	PC+ABS
	Dimension(WxHxD)	155 x155x35mm

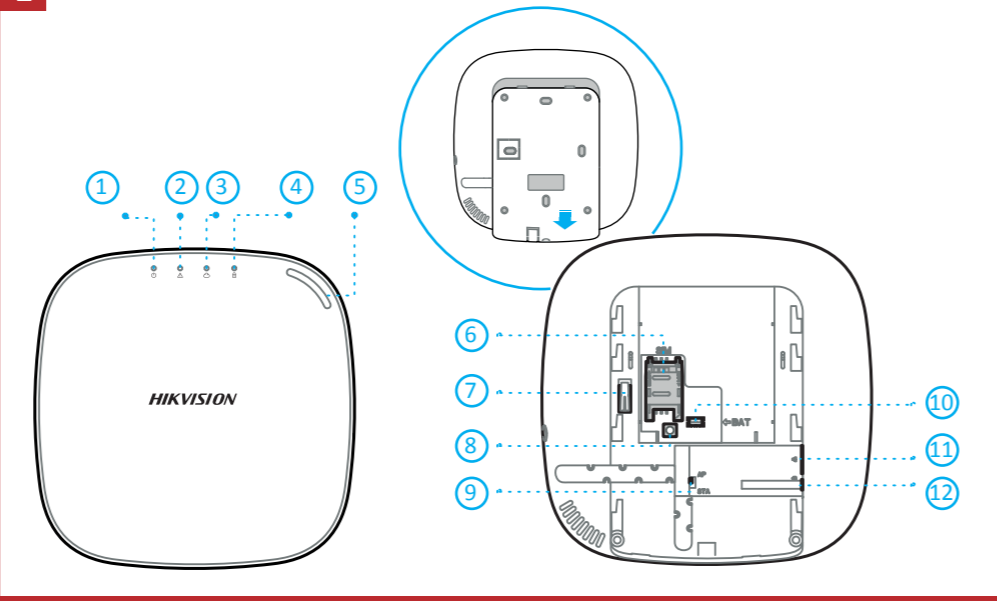
Recommended Power Adapter

Manufacture: Shenzhen HONOR Electronic Co., Ltd
Model: ADS-12B-06 05010E

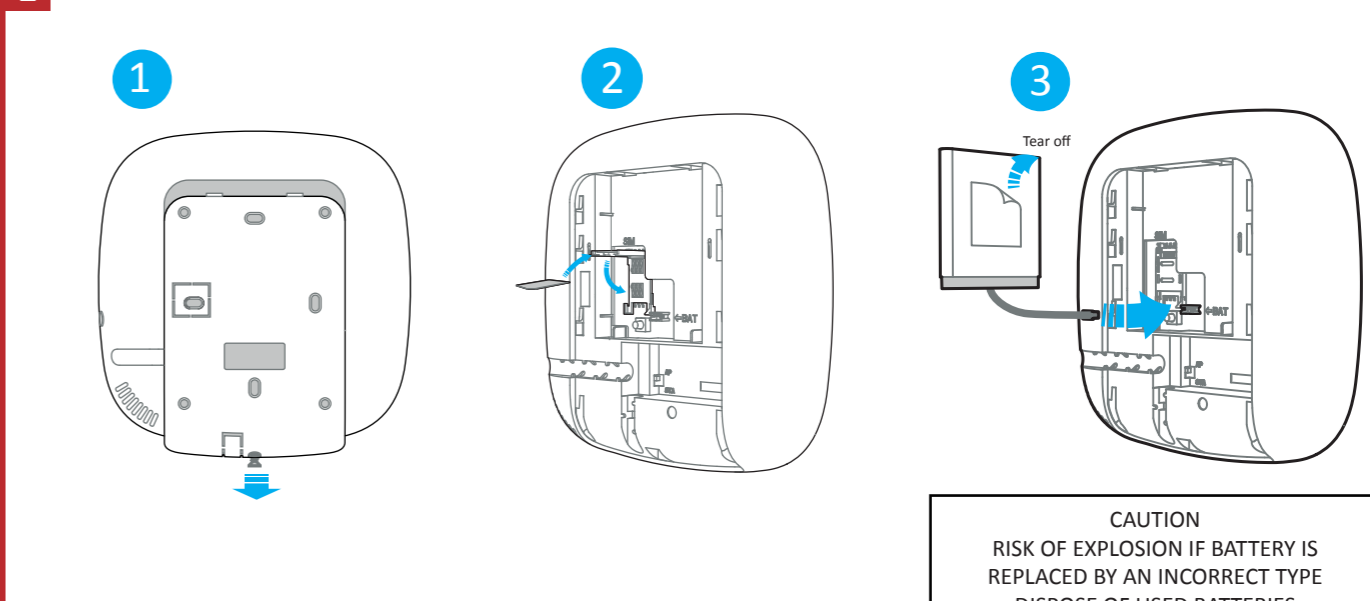
Input rating: 100-240V~50/60Hz Max. 0.3A

Output rating: 5V 2.0A

1

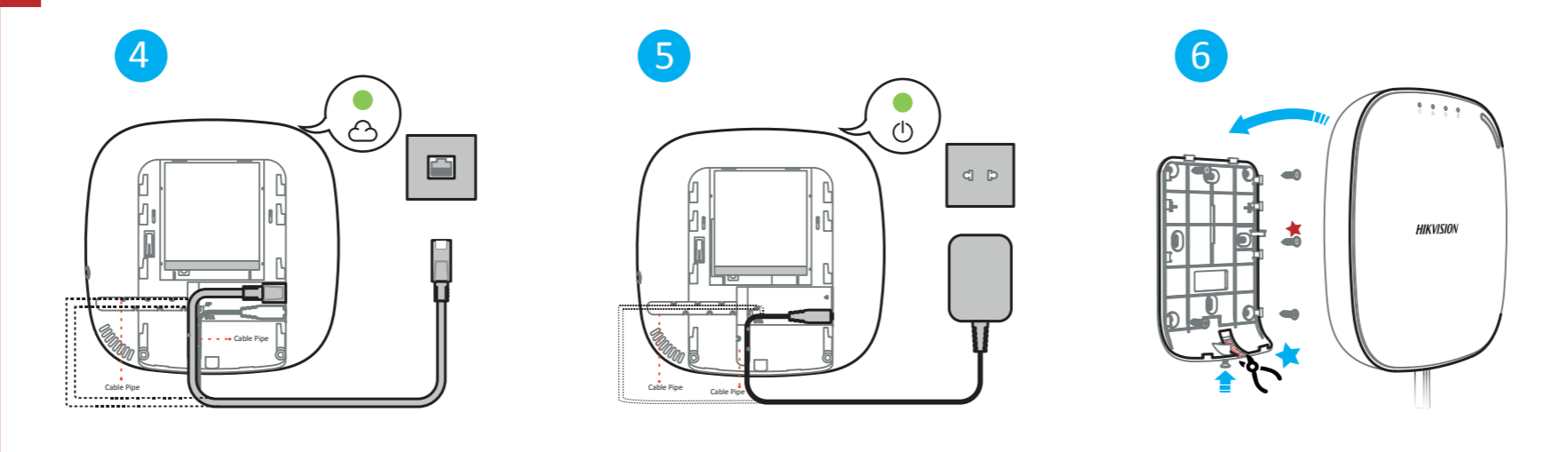


2



CAUTION
RISK OF EXPLOSION IF BATTERY IS REPLACED BY AN INCORRECT TYPE
DISPOSE OF USED BATTERIES ACCORDING TO THE INSTRUCTIONS

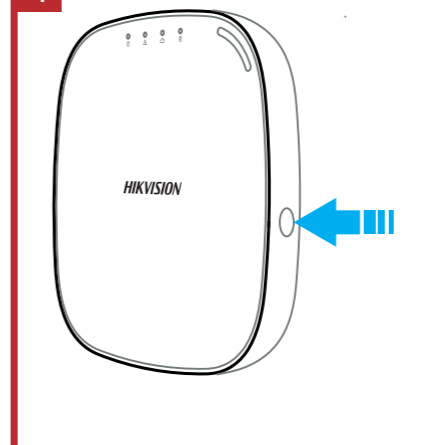
2



3



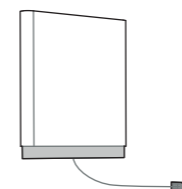
4



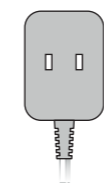
Components



Control Panel x 1



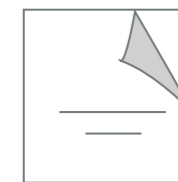
Battery x 1



Power Adapter x 1



Screw x 4



Quick Start Guide x 1

Product Information

COPYRIGHT © 2018 Hangzhou Hikvision Digital Technology Co., Ltd. ALL RIGHTS RESERVED.
Any and all information, including, among others, wordings, pictures, graphs are the properties of Hangzhou Hikvision Digital Technology Co., Ltd. or its subsidiaries (hereinafter referred to be "Hikvision"). This user manual (hereinafter referred to be "the Manual") cannot be reproduced, changed, translated, or distributed, partially or wholly, by any means, without the prior written permission of Hikvision. Unless otherwise stipulated, Hikvision does not make any warranties, guarantees or representations, express or implied, regarding to the Manual.

About this Manual
This Manual is applicable to the Axiom Security Control Panel Kit. The Manual includes instructions for using and managing the product. Pictures, charts, images and all other information hereinafter are for description and explanation only. The information contained in the Manual is subject to change, without notice, due to firmware updates or other reasons. Please find the latest version in the company website (<http://overseas.hikvision.com/en/>). Please use this user manual under the guidance of professionals.

HIKVISION Trademarks Acknowledgement and other Hikvision's trademarks and logos are the properties of Hikvision in various jurisdictions. Other trademarks and logos mentioned below are the properties of their respective owners.

CE This product and - if applicable - the supplied accessories too are marked with "CE" and comply therefore with the applicable harmonized European standards listed under the RE Directive 2014/53/EU, the EMC Directive 2014/30/EU, the LVD Directive 2014/35/EU, the RoHS Directive 2011/65/EU

WEEE 2012/19/EU (WEEE directive): Products marked with this symbol cannot be disposed of as unsorted municipal waste in the European Union. For proper recycling, return this product to your local supplier upon the purchase of equivalent new equipment, or dispose of it at designated collection points. For more information see: www.recyclethis.info

Battery 2006/66/EC (battery directive): This product contains a battery that cannot be disposed of as unsorted municipal waste in the European Union. See the product documentation for specific battery information. The battery is marked with this symbol, which may include lettering to indicate cadmium (Cd), lead (Pb), or mercury (Hg). For proper recycling, return the battery to your supplier or to a designated collection point. For more information see: www.recycle-this.info

