

AX HYBRID PRO

Quick Start Guide

EN 50131-3:2009, EN 50131-10:2014  
 EN 50136-2:2013, EN 50136-1:2012+A1:2018  
 EN 50131-6:2017, EN 50131-1:2006+A1:2009+A2:2017+A3:2020  
 EN 50130-4:2011+A1:2014, EN 50130-5:2011  
 Security Grade 2, Environment Class II, SP4

ENGLISH

1 Appearance

- 1. Telephone Module Slot
- 2. Power Terminal
- 3. Battery Terminal
- 4. Reset Button
- 5. WiFi Mode Switch\*
- 6. SD Card Slot\*
- 7. GPRS/4G Slot
- 8. Tamper Switch
- 9. LAN

\*Note: WiFi mode and SD card slot are equipped according to the model.

2 Installation and Wiring

Note: Power down the control panel before wiring accessories and peripherals.

- 1-3. Mount the back case.
- 4. Fix the telephone module (sold separately) and wiring.
- 5. Fix the GPRS/4G module (sold separately).
- 6. Wire power supply and network.

- 1 Power Supply Wiring
- 2 Network Wiring
- 3 Peripherals Wiring
- 4 Telephone Module Wiring

7. Close the case of the control panel.

- Indicator
- Mobile
  - PSTN
  - System
  - Act
  - Link
  - Power

3 Set Up

Set up via Web Client

For more activation methods, refer to the User Manual.

Default IP Address:

AP connection (Hotspot mode):192.168.8.1

Network cable connection: 192.0.0.64

- 1. Enter the device IP address in the web browser.
- 2. Create a password for admin account to activate the device.

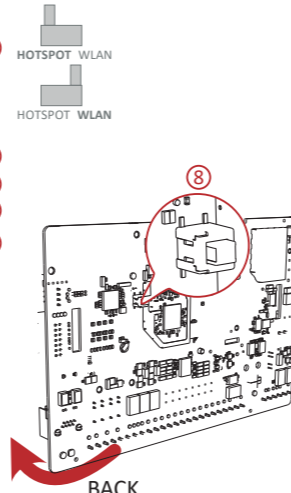
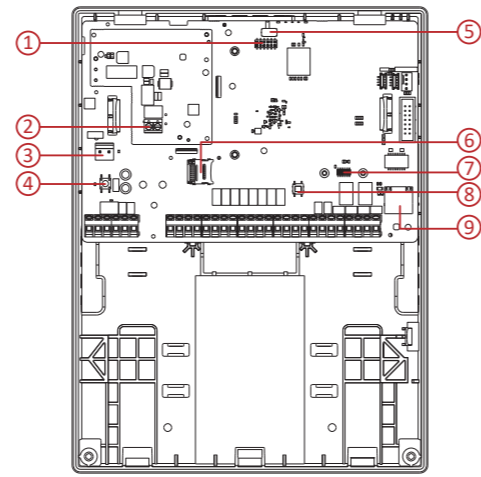
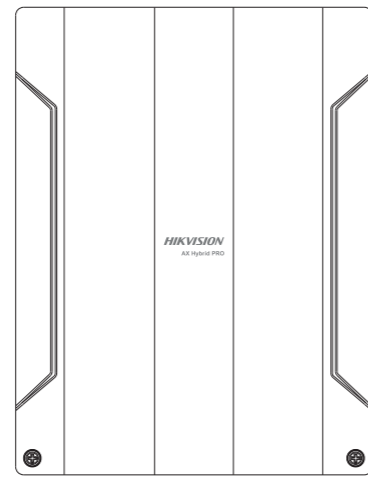
Reset:  
 After the device is started, hold the reset button for 10 seconds to reset the device.

4 User Manual

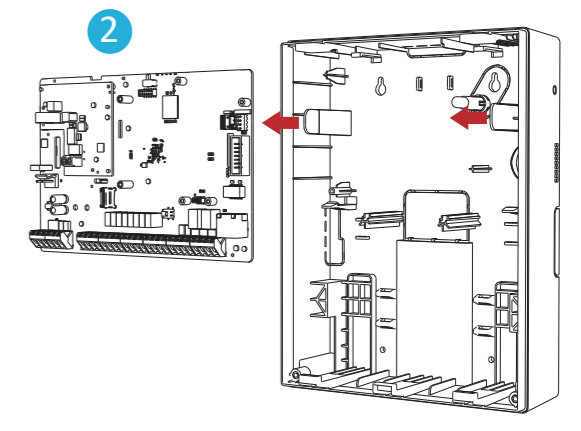
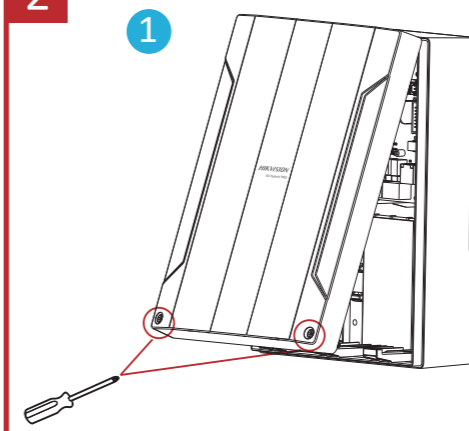
Specification

Tag	64
Keyfob	64
Keypad	8
Zones	64 (8 on-board zones, max 8 wired PIRCAM)
Area	32
User	Installer: 1 Administrator: 1 Operator: 62
SMS notification	Supports (with GPRS/3G/4G module)
Onboard video clips	4
ARC protocol	ISAPI: Supports iVMS-4200 client software and web client Cloud P2P: Supports cloud P2P privacy protocol DC-09: ARC accessible (ADM-CID/SIA-DCS) CSV-IP: Supports CSV-IP ISUP: Supports ISUP 5.0
Programming tools	Web/iVMS-4200/Hik-ProConnect/Keypad
Firmware upgrade	Web/iVMS-4200/Hik-ProConnect
Alarm output	64 (Including 2 on-board relay outputs)
Power Output	12 V, 1 A
3/4G on board	Optional
GPRS on board	Optional
Wi-Fi	802.11b/g/n (2.4GHz)
Bus	1 speed-X bus
Sounder output	1 wired on-board sounder output
Tamper-Proof	1 switch to detect removal from mounting 1 switch to detect front cover open
Network interface	1 RJ45 10M/100M Ethernet interface
Power interface	12 to 15 VDC
Operation temperature	-10°C to 40°C
Operation humidity	10% to 90%
Shell material	Plastic
Color	White
Dimension(WxHxD)	261 mm x 199 mm x 86.4 mm
Weight	913 g

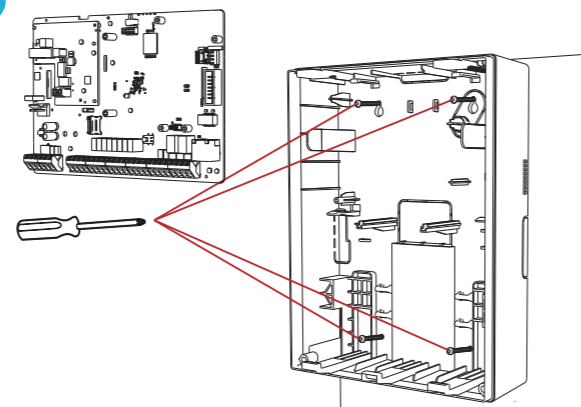
1



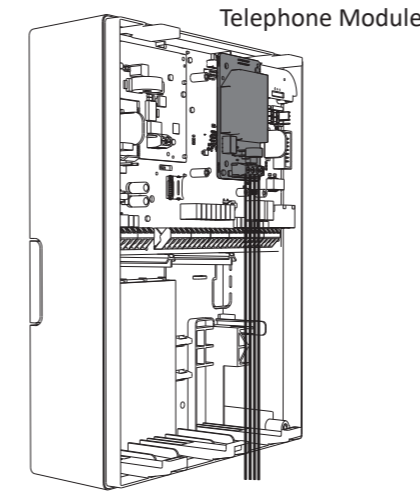
2



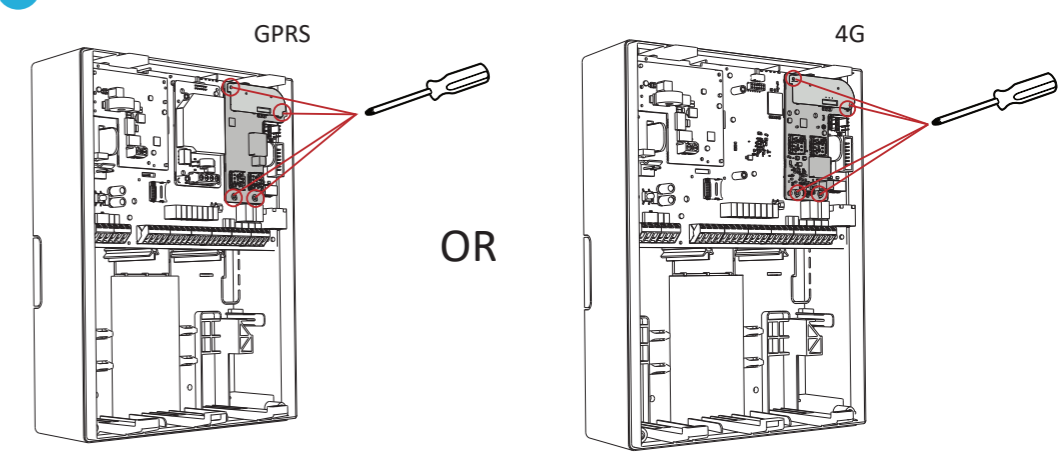
3



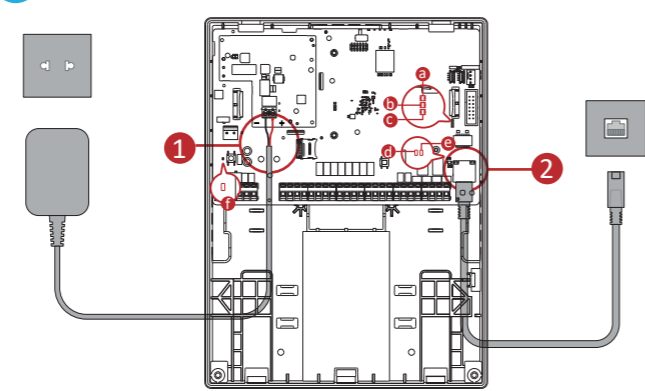
4



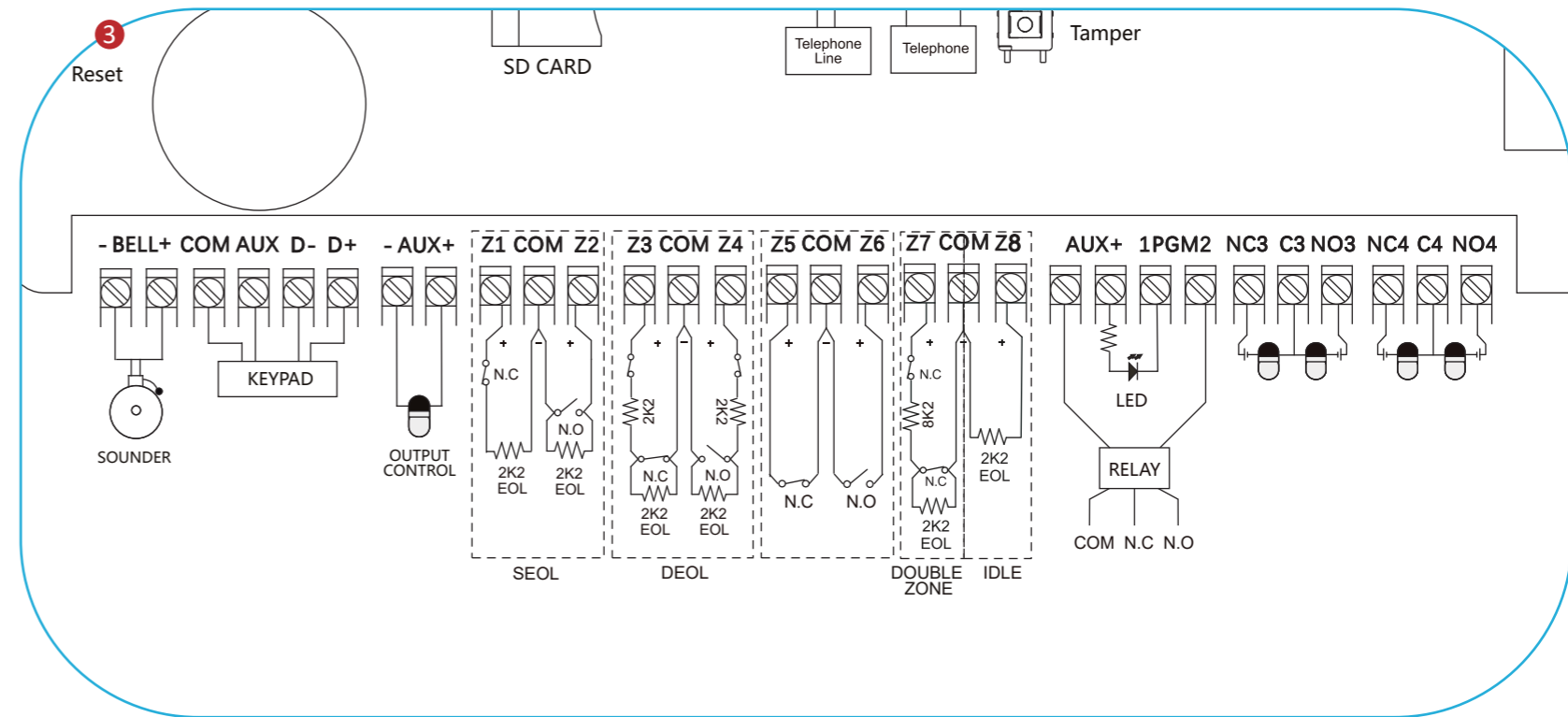
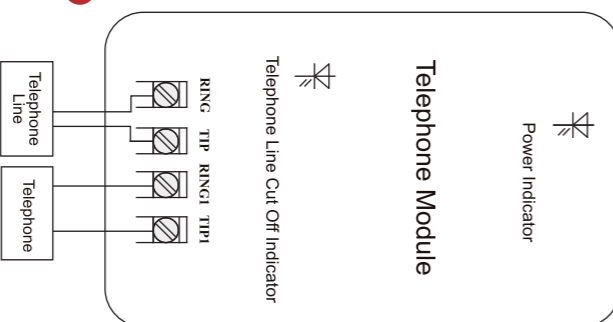
5



6



4



4



©2022 Hangzhou Hikvision Digital Technology Co., Ltd. All rights reserved.

#### About this Manual

The Manual includes instructions for using and managing the Product. Pictures, charts, images and all other information hereinafter are for description and explanation only.

The information contained in the Manual is subject to change, without notice, due to firmware updates or other reasons. Please find the latest version of this Manual at the Hikvision website (<https://www.hikvision.com/>).

Please use this Manual with the guidance and assistance of professionals trained in supporting the Product.

#### Trademarks

**Hikvision** and other Hikvision's trademarks and logos are the properties of Hikvision in various jurisdictions.

Other trademarks and logos mentioned are the properties of their respective owners.


#### Disclaimer


TO THE MAXIMUM EXTENT PERMITTED BY APPLICABLE LAW, THIS MANUAL AND THE PRODUCT DESCRIBED, WITH ITS HARDWARE, SOFTWARE AND FIRMWARE, ARE PROVIDED "AS IS" AND "WITH ALL FAULTS AND ERRORS". HIKVISION MAKES NO WARRANTIES, EXPRESS OR IMPLIED, INCLUDING WITHOUT LIMITATION, MERCHANTABILITY, SATISFACTORY QUALITY, OR FITNESS FOR A PARTICULAR PURPOSE. THE USE OF THE PRODUCT BY YOU IS AT YOUR OWN RISK. IN NO EVENT WILL HIKVISION BE LIABLE TO YOU FOR ANY SPECIAL, CONSEQUENTIAL, INCIDENTAL, OR INDIRECT DAMAGES, INCLUDING, AMONG OTHERS, DAMAGES FOR LOSS OF BUSINESS PROFITS, BUSINESS INTERRUPTION, OR LOSS OF DATA, CORRUPTION OF SYSTEMS, OR LOSS OF DOCUMENTATION, WHETHER BASED ON BREACH OF CONTRACT, TORT (INCLUDING NEGLIGENCE), PRODUCT LIABILITY, OR OTHERWISE, IN CONNECTION WITH THE USE OF THE PRODUCT, EVEN IF HIKVISION HAS BEEN ADVISED OF THE POSSIBILITY OF SUCH DAMAGES OR LOSS.


YOU ACKNOWLEDGE THAT THE NATURE OF THE INTERNET PROVIDES FOR INHERENT SECURITY RISKS, AND HIKVISION SHALL NOT TAKE ANY RESPONSIBILITIES FOR ABNORMAL OPERATION, PRIVACY LEAKAGE OR OTHER DAMAGES RESULTING FROM CYBER-ATTACK, HACKER ATTACK, VIRUS INFECTION, OR OTHER INTERNET SECURITY RISKS; HOWEVER, HIKVISION WILL PROVIDE TIMELY TECHNICAL SUPPORT IF REQUIRED.

YOU AGREE TO USE THIS PRODUCT IN COMPLIANCE WITH ALL APPLICABLE LAWS, AND YOU ARE SOLELY RESPONSIBLE FOR ENSURING THAT YOUR USE CONFORMS TO THE APPLICABLE LAW. ESPECIALLY, YOU ARE RESPONSIBLE, FOR USING THIS PRODUCT IN A MANNER THAT DOES NOT INFRINGE ON THE RIGHTS OF THIRD PARTIES, INCLUDING WITHOUT LIMITATION, RIGHTS OF PUBLICITY, INTELLECTUAL PROPERTY RIGHTS, OR DATA PROTECTION AND OTHER PRIVACY RIGHTS. YOU SHALL NOT USE THIS PRODUCT FOR ANY PROHIBITED END-USES, INCLUDING THE DEVELOPMENT OR PRODUCTION OF WEAPONS OF MASS DESTRUCTION, THE DEVELOPMENT OR PRODUCTION OF CHEMICAL OR BIOLOGICAL WEAPONS, ANY ACTIVITIES IN THE CONTEXT RELATED TO ANY NUCLEAR EXPLOSIVE OR UNSAFE NUCLEAR FUEL-CYCLE, OR IN SUPPORT OF HUMAN RIGHTS ABUSES.


IN THE EVENT OF ANY CONFLICTS BETWEEN THIS MANUAL AND THE APPLICABLE LAW, THE LATER PREVAILS.

 This product and - if applicable - the supplied accessories too are marked with "CE" and comply therefore with the applicable harmonized European standards listed under the RE Directive 2014/53/EU, the EMC Directive 2014/30/EU, the RoHS Directive 2011/65/EU

 2012/19/EU (WEEE directive): Products marked with this symbol cannot be disposed of as unsorted municipal waste in the European Union. For proper recycling, return this product to your local supplier upon the purchase of equivalent new equipment, or dispose of it at designated collection points. For more information see: [www.recyclethis.info](http://www.recyclethis.info)

 2006/66/EC (battery directive): This product contains a battery that cannot be disposed of as unsorted municipal waste in the European Union. See the product documentation for specific battery information. The battery is marked with this symbol, which may include lettering to indicate cadmium (Cd), lead (Pb), or mercury (Hg). For proper recycling, return the battery to your supplier or to a designated collection point. For more information see: [www.recyclethis.info](http://www.recyclethis.info)

#### CAUTION

 In the use of the product, you must be in strict compliance with the electrical safety regulations of the nation and region.

The equipment shall not be exposed to dripping or splashing and that no objects filled with liquids, such as vases, shall be placed on the equipment.

Shock hazard! Disconnect all power sources before maintenance.

The socket-outlet shall be installed near the equipment and shall be easily accessible.

This equipment is suitable for mounting on concrete or other non-combustible surface only.

The serial port of the equipment is used for debugging only.

This equipment is not suitable for use in locations where children are likely to be present.

Install the equipment according to the instructions in this manual.

To prevent injury, this equipment must be securely attached to the floor/wall in accordance with the installation instructions.

Keep vertically down when moving or using the equipment.

The additional force shall be equal to three times the weight of the equipment but not less than 50N. The equipment and its associated mounting means shall remain secure during the installation.

After the installation, the equipment, including any associated mounting plate, shall not be damaged.

The equipment has been designed, when required, modified for connection to an IT power distribution system.

#### BATTERY CAUTION

1. CAUTION: Risk of explosion if the battery is replaced by an incorrect type.

2. Improper replacement of the battery with an incorrect type may defeat a safeguard (for example, in the case of some lithium battery types).

3. Do not dispose of the battery into fire or a hot oven, or mechanically crush or cut the battery, which may result in an explosion.

4. Do not leave the battery in an extremely high temperature surrounding environment, which may result in an explosion or the leakage of flammable liquid or gas.

5. Do not subject the battery to extremely low air pressure, which may result in an explosion or the leakage of flammable liquid or gas.

6. Dispose of used batteries according to the instructions.

7. + identifies the positive terminal(s) of equipment which is used with, or generates direct current. - identifies the negative terminal(s) of equipment which is used with, or generates direct current.