



# Thermal & Optical Bi-spectrum Network Camera

User Manual

## Legal Information

©2021 Hangzhou Hikvision Digital Technology Co., Ltd. All rights reserved.

### About this Manual

The Manual includes instructions for using and managing the Product. Pictures, charts, images and all other information hereinafter are for description and explanation only. The information contained in the Manual is subject to change, without notice, due to firmware updates or other reasons. Please find the latest version of this Manual at the Hikvision website (<https://www.hikvision.com/>).

Please use this Manual with the guidance and assistance of professionals trained in supporting the Product.

### Trademarks

**HIKVISION** and other Hikvision's trademarks and logos are the properties of Hikvision in various jurisdictions.

Other trademarks and logos mentioned are the properties of their respective owners.

### Disclaimer

TO THE MAXIMUM EXTENT PERMITTED BY APPLICABLE LAW, THIS MANUAL AND THE PRODUCT DESCRIBED, WITH ITS HARDWARE, SOFTWARE AND FIRMWARE, ARE PROVIDED "AS IS" AND "WITH ALL FAULTS AND ERRORS". HIKVISION MAKES NO WARRANTIES, EXPRESS OR IMPLIED, INCLUDING WITHOUT LIMITATION, MERCHANTABILITY, SATISFACTORY QUALITY, OR FITNESS FOR A PARTICULAR PURPOSE. THE USE OF THE PRODUCT BY YOU IS AT YOUR OWN RISK. IN NO EVENT WILL HIKVISION BE LIABLE TO YOU FOR ANY SPECIAL, CONSEQUENTIAL, INCIDENTAL, OR INDIRECT DAMAGES, INCLUDING, AMONG OTHERS, DAMAGES FOR LOSS OF BUSINESS PROFITS, BUSINESS INTERRUPTION, OR LOSS OF DATA, CORRUPTION OF SYSTEMS, OR LOSS OF DOCUMENTATION, WHETHER BASED ON BREACH OF CONTRACT, TORT (INCLUDING NEGLIGENCE), PRODUCT LIABILITY, OR OTHERWISE, IN CONNECTION WITH THE USE OF THE PRODUCT, EVEN IF HIKVISION HAS BEEN ADVISED OF THE POSSIBILITY OF SUCH DAMAGES OR LOSS.

YOU ACKNOWLEDGE THAT THE NATURE OF THE INTERNET PROVIDES FOR INHERENT SECURITY RISKS, AND HIKVISION SHALL NOT TAKE ANY RESPONSIBILITIES FOR ABNORMAL OPERATION, PRIVACY LEAKAGE OR OTHER DAMAGES RESULTING FROM CYBER-ATTACK, HACKER ATTACK, VIRUS INFECTION, OR OTHER INTERNET SECURITY RISKS; HOWEVER, HIKVISION WILL PROVIDE TIMELY TECHNICAL SUPPORT IF REQUIRED.

YOU AGREE TO USE THIS PRODUCT IN COMPLIANCE WITH ALL APPLICABLE LAWS, AND YOU ARE SOLELY RESPONSIBLE FOR ENSURING THAT YOUR USE CONFORMS TO THE APPLICABLE LAW. ESPECIALLY, YOU ARE RESPONSIBLE, FOR USING THIS PRODUCT IN A MANNER THAT DOES NOT INFRINGE ON THE RIGHTS OF THIRD PARTIES, INCLUDING WITHOUT LIMITATION, RIGHTS OF PUBLICITY, INTELLECTUAL PROPERTY RIGHTS, OR DATA PROTECTION AND OTHER PRIVACY RIGHTS. YOU SHALL NOT USE THIS PRODUCT FOR ANY PROHIBITED END-USES, INCLUDING THE DEVELOPMENT OR PRODUCTION OF WEAPONS OF MASS DESTRUCTION, THE DEVELOPMENT OR

## Thermal & Optical Bi-spectrum Network Camera User Manual




---

PRODUCTION OF CHEMICAL OR BIOLOGICAL WEAPONS, ANY ACTIVITIES IN THE CONTEXT RELATED TO ANY NUCLEAR EXPLOSIVE OR UNSAFE NUCLEAR FUEL-CYCLE, OR IN SUPPORT OF HUMAN RIGHTS ABUSES.

IN THE EVENT OF ANY CONFLICTS BETWEEN THIS MANUAL AND THE APPLICABLE LAW, THE LATER PREVAILS.

## Symbol Conventions

The symbols that may be found in this document are defined as follows.

Symbol	Description
 <b>Danger</b>	Indicates a hazardous situation which, if not avoided, will or could result in death or serious injury.
 <b>Caution</b>	Indicates a potentially hazardous situation which, if not avoided, could result in equipment damage, data loss, performance degradation, or unexpected results.
 <b>Note</b>	Provides additional information to emphasize or supplement important points of the main text.

## Safety Instruction

These instructions are intended to ensure that user can use the product correctly to avoid danger or property loss.

### Laws and Regulations

- In the use of the product, you must be in strict compliance with the electrical safety regulations of the nation and region.

### Transportation

- Keep the device in original or similar packaging while transporting it.
- Keep all wrappers after unpacking them for future use. In case of any failure occurred, you need to return the device to the factory with the original wrapper. Transportation without the original wrapper may result in damage on the device and the company shall not take any responsibilities.
- DO NOT drop the product or subject it to physical shock. Keep the device away from magnetic interference.

### Power Supply

- Please purchase the charger by yourself. Input voltage should meet the Limited Power Source (12 VDC, 24 VAC, or PoE(802.3af)) according to the IEC62368 standard. Please refer to technical specifications for detailed information.
- Make sure the plug is properly connected to the power socket.
- The socket-outlet shall be installed near the equipment and shall be easily accessible.
- DO NOT connect multiple devices to one power adapter, to avoid over-heating or fire hazards caused by overload.
- DO NOT touch the bare metal contacts of the inlets after the circuit breaker is turned off. Electricity still exists.
- + identifies the positive terminal(s) of equipment which is used with, or generates direct current. - identifies the negative terminal(s) of equipment which is used with, or generates direct current.

### Battery

- Risk of explosion if the battery is replaced by an incorrect type. Dispose of used batteries according to the instructions. Il y a risque d'explosion si la batterie est remplacée par une batterie de type incorrect. Mettre au rebut les batteries usagées conformément aux instructions.
- The built-in battery cannot be dismantled. Please contact the manufacture for repair if necessary.
- For long-term storage of the battery, make sure it is fully charged every half year to ensure the battery quality. Otherwise, damage may occur.
- This equipment is not suitable for use in locations where children are likely to be present.
- Improper replacement of the battery with an incorrect type may defeat a safeguard (for

example, in the case of some lithium battery types).

- DO NOT dispose of the battery into fire or a hot oven, or mechanically crush or cut the battery, which may result in an explosion.
- DO NOT leave the battery in an extremely high temperature surrounding environment, which may result in an explosion or the leakage of flammable liquid or gas.
- DO NOT subject the battery to extremely low air pressure, which may result in an explosion or the leakage of flammable liquid or gas.

### Installation

- Never place the equipment in an unstable location. The equipment may fall, causing serious personal injury or death.
- This equipment is for use only with corresponding brackets. Use with other (carts, stands, or carriers) may result in instability causing injury.

### System Security

- You acknowledge that the nature of Internet provides for inherent security risks, and our company shall not take any responsibilities for abnormal operation, privacy leakage or other damages resulting from cyber attack, hacker attack, however, our company will provide timely technical support if required.
- Please enforce the protection for the personal information and the data security as the device may be confronted with the network security problems when it is connected to the Internet. Please contact us when the device might exist network security risks.
- Please understand that you have the responsibility to configure all the passwords and other security settings about the device, and keep your user name and password.


### Maintenance

- If the product does not work properly, please contact your dealer or the nearest service center. We shall not assume any responsibility for problems caused by unauthorized repair or maintenance.
- A few device components (e.g., electrolytic capacitor) require regular replacement. The average lifespan varies, so periodic checking is recommended. Contact your dealer for details.
- Wipe the device gently with a clean cloth and a small quantity of ethanol, if necessary.
- If the equipment is used in a manner not specified by the manufacturer, the protection provided by the device may be impaired.
- To reduce the risk of fire, replace only with the same type and rating of fuse.
- The serial port of the equipment is used for debugging only.

### Using Environment

- Make sure the running environment meets the requirement of the device. The operating temperature shall be -40 °C to 65 °C (-40 °F to 149 °F), and the operating humidity shall be 95% or less, no condensing.
- DO NOT expose the device to high electromagnetic radiation or dusty environments.
- DO NOT aim the lens at the sun or any other bright light.
- The equipment shall not be exposed to dripping or splashing and that no objects filled with

liquids, such as vases, shall be placed on the equipment.

- No naked flame sources, such as lighted candles, should be placed on the equipment.
- Provide a surge suppressor at the inlet opening of the equipment under special conditions such as the mountain top, iron tower, and forest.
- Burned fingers when handling the parts with symbol . Wait one-half hour after switching off before handling the parts.

### **Emergency**

- If smoke, odor, or noise arises from the device, immediately turn off the power, unplug the power cable, and contact the service center.

# Contents

<b>Chapter 1 Overview</b> .....	<b>1</b>
<b>1.1 Brief Description</b> .....	<b>1</b>
<b>1.2 Function</b> .....	<b>1</b>
<b>Chapter 2 Device Activation and Accessing</b> .....	<b>2</b>
<b>2.1 Activate the Device via SADP</b> .....	<b>2</b>
<b>2.2 Activate the Device via Browser</b> .....	<b>2</b>
<b>2.3 Login</b> .....	<b>3</b>
<b>2.3.1 Plug-in Installation</b> .....	<b>3</b>
<b>2.3.2 Illegal Login Lock</b> .....	<b>4</b>
<b>Chapter 3 Smart Function</b> .....	<b>5</b>
<b>3.1 Enable VCA Function</b> .....	<b>5</b>
<b>3.2 Set Same Unit</b> .....	<b>5</b>
<b>3.3 Temperature Measurement</b> .....	<b>5</b>
<b>3.3.1 Notice</b> .....	<b>6</b>
<b>3.3.2 Thermography Configuration Flow Chart</b> .....	<b>7</b>
<b>3.3.3 Automatic Thermography</b> .....	<b>9</b>
<b>3.3.4 Manual Thermography</b> .....	<b>13</b>
<b>3.3.5 Set Black Body Correction</b> .....	<b>14</b>
<b>3.3.6 Set Temperature Compensation</b> .....	<b>15</b>
<b>3.4 Temperature Screening</b> .....	<b>15</b>
<b>3.4.1 Set Thermography Parameters</b> .....	<b>16</b>
<b>Chapter 4 Event and Alarm</b> .....	<b>17</b>
<b>4.1 Set Motion Detection</b> .....	<b>17</b>
<b>4.1.1 Normal Mode</b> .....	<b>17</b>
<b>4.1.2 Expert Mode</b> .....	<b>18</b>
<b>4.2 Set Video Tampering Alarm</b> .....	<b>19</b>
<b>4.3 Set Alarm Input</b> .....	<b>20</b>
<b>4.4 Set Exception Alarm</b> .....	<b>21</b>
<b>4.5 Detect Audio Exception</b> .....	<b>21</b>



<b>Chapter 5 Arming Schedule and Alarm Linkage</b> .....	<b>23</b>
5.1 Set Arming Schedule .....	23
5.2 Linkage Method Settings .....	23
5.2.1 Trigger Alarm Output .....	23
5.2.2 FTP/NAS/Memory Card Uploading .....	24
5.2.3 Send Email.....	25
5.2.4 Notify Surveillance Center.....	26
5.2.5 Trigger Recording .....	26
5.2.6 Audible Warning .....	26
5.2.7 Flashing Light.....	27
<b>Chapter 6 Live View</b> .....	<b>29</b>
6.1 Live View Parameters .....	29
6.1.1 Window Division .....	29
6.1.2 Live View Stream Type .....	29
6.1.3 Enable and Disable Live View .....	29
6.1.4 Start Digital Zoom .....	29
6.1.5 View Previous/Next Page.....	30
6.1.6 Full Screen .....	30
6.1.7 Light .....	30
6.1.8 Wiper .....	30
6.1.9 Quick Set Live View .....	30
6.2 Set Transmission Parameters.....	30
<b>Chapter 7 Video and Audio</b> .....	<b>32</b>
7.1 Video Settings .....	32
7.1.1 Stream Type .....	32
7.1.2 Video Type .....	32
7.1.3 Resolution .....	33
7.1.4 Bitrate Type and Max. Bitrate .....	33
7.1.5 Video Quality .....	33
7.1.6 Frame Rate.....	33
7.1.7 Video Encoding.....	33

7.1.8 Smoothing .....	35
7.1.9 Display VCA Info .....	35
7.1.10 Audio Settings .....	36
7.1.11 Two-way Audio .....	36
7.1.12 Set ROI.....	37
7.1.13 Metadata.....	37
7.2 Display Settings.....	38
7.2.1 Image Adjustment .....	38
7.2.2 Image Adjustment (Thermal Channel) .....	38
7.2.3 Exposure Settings .....	38
7.2.4 Set Supplement Light .....	39
7.2.5 BLC .....	39
7.2.6 WDR .....	39
7.2.7 White Balance .....	40
7.2.8 DNR .....	40
7.2.9 Set Palette .....	40
7.2.10 Set Target Enhancement .....	40
7.2.11 Brightness Sudden Change .....	41
7.2.12 Enhance Regional Image .....	41
7.2.13 Mirror .....	41
7.2.14 Digital Zoom .....	41
7.2.15 Scene Mode.....	41
7.2.16 Local Video Output.....	42
7.3 OSD .....	42
7.4 Set Picture in Picture.....	42
7.5 VCA Rule Display Settings .....	43
7.6 Set Privacy Mask.....	43
7.7 Overlay Picture .....	43
7.8 Set Manual DPC (Defective Pixel Correction) .....	44
Chapter 8 Video Recording and Picture Capture .....	45
8.1 Storage Settings .....	45

8.1.1 Set Memory Card .....	45
8.1.2 Set NAS.....	45
8.1.3 Set FTP.....	46
8.1.4 Set Cloud Storage .....	46
8.2 Video Recording.....	47
8.2.1 Record Automatically .....	47
8.2.2 Record Manually .....	49
8.2.3 Playback and Download Video.....	49
8.3 Capture Configuration .....	49
8.3.1 Capture Automatically .....	50
8.3.2 Capture Manually.....	50
8.3.3 View and Download Picture .....	50
Chapter 9 Network Settings .....	52
9.1 TCP/IP .....	52
9.1.1 Multicast Discovery.....	53
9.2 Port .....	53
9.3 Port Mapping .....	54
9.3.1 Set Auto Port Mapping.....	54
9.3.2 Set Manual Port Mapping .....	54
9.3.3 Set Port Mapping on Router.....	55
9.4 Multicast.....	56
9.5 SNMP .....	56
9.6 Access to Device via Domain Name .....	57
9.7 Access to Device via PPPoE Dial Up Connection .....	57
9.8 Enable Hik-Connect Service on Camera .....	58
9.8.1 Enable Hik-Connect Service via Web Browser.....	58
9.8.2 Enable Hik-Connect Service via SADP Software .....	59
9.8.3 Access Camera via Hik-Connect.....	59
9.9 Set ISUP.....	60
9.10 Set Open Network Video Interface .....	60
9.11 Set Alarm Server .....	61

<b>9.12 Set Network Service</b> .....	61
<b>Chapter 10 System and Security</b> .....	<b>62</b>
<b>10.1 View Device Information</b> .....	62
<b>10.2 Search and Manage Log</b> .....	62
<b>10.3 Import and Export Configuration File</b> .....	62
<b>10.4 Export Diagnose Information</b> .....	63
<b>10.5 Reboot</b> .....	63
<b>10.6 Restore and Default</b> .....	63
<b>10.7 Upgrade</b> .....	63
<b>10.8 View Open Source Software License</b> .....	64
<b>10.9 Time and Date</b> .....	64
<b>10.9.1 Synchronize Time Manually</b> .....	64
<b>10.9.2 Set NTP Server</b> .....	64
<b>10.9.3 Set DST</b> .....	65
<b>10.10 Set RS-232</b> .....	65
<b>10.11 Set RS-485</b> .....	65
<b>10.12 Security</b> .....	66
<b>10.12.1 Authentication</b> .....	66
<b>10.12.2 Security Audit Log</b> .....	66
<b>10.12.3 Set IP Address Filter</b> .....	67
<b>10.12.4 Set HTTPS</b> .....	67
<b>10.12.5 Set QoS</b> .....	69
<b>10.12.6 Set IEEE 802.1X</b> .....	69
<b>10.13 User and Account</b> .....	70
<b>10.13.1 Set User Account and Permission</b> .....	70
<b>Chapter 11 Appendix</b> .....	<b>71</b>
<b>11.1 Common Material Emissivity Reference</b> .....	71
<b>11.2 Device Command</b> .....	71
<b>11.3 Device Communication Matrix</b> .....	72

# Chapter 1 Overview

## 1.1 Brief Description

The Temperature Screening Thermal & Optical Bi-Spectrum Network Camera is a camera with function of high accuracy temperature measurement.

With built-in high sensitivity sensor and passive infrared imaging, the camera is able to measure object's temperature at a high accuracy.



This device is NOT for medical use.

---

## 1.2 Function

This section introduces main functions of the device.

### Temperature Screening

Device can measure surface temperature accurately and screen out the alarming targets.

### Temperature Measurement

Device can measure the actual temperature of the spot being monitored. The device alarms when temperature exceeds the temperature threshold value.

## Chapter 2 Device Activation and Accessing

To protect the security and privacy of the user account and data, you should set a login password to activate the device when access the device via network.

---

### Note

Refer to the user manual of the software client for the detailed information about the client software activation.

---

### 2.1 Activate the Device via SADP

Search and activate the online devices via SADP software.

#### Before You Start

Access [www.hikvision.com](http://www.hikvision.com) to get SADP software to install.

#### Steps

1. Connect the device to network using the network cable.
2. Run SADP software to search the online devices.
3. Check **Device Status** from the device list, and select **Inactive** device.
4. Create and input the new password in the password field, and confirm the password.

---

### Caution

We highly recommend you create a strong password of your own choosing (using a minimum of 8 characters, including upper case letters, lower case letters, numbers, and special characters) in order to increase the security of your product. And we recommend you reset your password regularly, especially in the high security system, resetting the password monthly or weekly can better protect your product.

---

5. Click **OK**.  
**Device Status** changes into **Active**.
6. Optional: Change the network parameters of the device in **Modify Network Parameters**.

### 2.2 Activate the Device via Browser

You can access and activate the device via the browser.

#### Steps

1. Connect the device to the PC using the network cables.
2. Change the IP address of the PC and device to the same segment.

## Note

The default IP address of the device is 192.168.1.64. You can set the IP address of the PC from 192.168.1.2 to 192.168.1.253 (except 192.168.1.64). For example, you can set the IP address of the PC to 192.168.1.100.

---

3. Input **192.168.1.64** in the browser.
  4. Set device activation password.
- 

## Caution

We highly recommend you create a strong password of your own choosing (using a minimum of 8 characters, including at least three of the following categories: upper case letters, lower case letters, numbers, and special characters) in order to increase the security of your product. And we recommend you reset your password regularly, especially in the high security system, resetting the password monthly or weekly can better protect your product.

---


5. Click **OK**.
6. Input the activation password to log in to the device.
7. Optional: Go to **Configuration** → **Network** → **Basic** → **TCP/IP** to change the IP address of the device to the same segment of your network.

## 2.3 Login

Log in to the device via Web browser.

### 2.3.1 Plug-in Installation

Certain operation systems and web browser may restrict the display and operation of the device function. You should install plug-in or complete certain settings to ensure normal display and operation. For detailed restricted function, refer to the actual device.

Operating System	Web Browser	Operation
Windows	Internet Explorer 10+	Follow pop-up prompts to complete plug-in installation.
	Google Chrome 57+ Mozilla Firefox 52+	Click  <b>Download Plug-in</b> to download and install plug-in. Go to <b>Configuration</b> → <b>Network</b> → <b>Advanced Settings</b> → <b>Network Service</b> to enable WebSocket or WebSockets for normal view if

Operating System	Web Browser	Operation
		plug-in installation is not required. Display and operation of certain functions are restricted. For example, Playback and Picture are not available. For detailed restricted function, refer to the actual device.
Mac OS 10.13+	Mac Safari 12+	Plug-in installation is not required. Go to <b>Configuration</b> → <b>Network</b> → <b>Advanced Settings</b> → <b>Network Service</b> to enable WebSocket or WebSockets for normal view. Display and operation of certain functions are restricted. For example, Playback and Picture are not available. For detailed restricted function, refer to the actual device.

 **Note**

The device only supports Windows and Mac OS system and does not support Linux system.

### 2.3.2 Illegal Login Lock

It helps to improve the security when accessing the device via Internet.

Go to **Configuration** → **System** → **Security** → **Security Service**, and enable **Enable Illegal Login Lock**. **Illegal Login Attempts** and **Locking Duration** are configurable.

#### Illegal Login Attempts

When your login attempts with the wrong password reach the set times, the device is locked.

#### Locking Duration

The device releases the lock after the setting duration.



## Chapter 3 Smart Function

### 3.1 Enable VCA Function

The different VCA function corresponds to different VCA resource type. Enable the VCA resource first to active corresponding VCA function.

#### Steps

1. Go to **Configuration** → **System** → **Maintenance** → **VCA Resource Type** page.
2. Select the desired VCA resource type.

---

#### Note

The VCA resource type varies according to different camera models. Please refer to the current interface.

---

3. Click **Save**.

---

#### Note

- Some of the VCA functions are mutually exclusive. When certain VCA resource type is selected and saved, the mutually exclusive VCA function will not display.
  - A reboot is required after setting the VCA resource.
- 

### 3.2 Set Same Unit

Set the same temperature unit and distance unit. When you enable this function, the unit cannot be configured separately in other setting pages

#### Steps

1. Go to **Configuration** → **System** → **System Settings** → **Unit Settings**.
2. Check **Use Same Unit**.
3. Set the temperature unit and distance unit.
4. Click **Save**.

### 3.3 Temperature Measurement

When you enable this function, the device measures the actual temperature of the scene. It

alarms when temperature exceeds the temperature threshold value.

### **3.3.1 Notice**

This part introduces the notices of configuring temperature measurement function.

- The target surface should be as vertical to the optical axis as possible. It is recommended that the angle of oblique image plane should be less than 45°.
- The target image pixels should be more than 5 × 5.
- Please select line thermography or area thermography for a certain area temperature measurement. The point thermography is not recommended in case of deviation occurred during device movement to affect the accuracy of temperature measurement.

### **3.3.2 Thermography Configuration Flow Chart**

This part introduces the process of configuring temperature measurement.

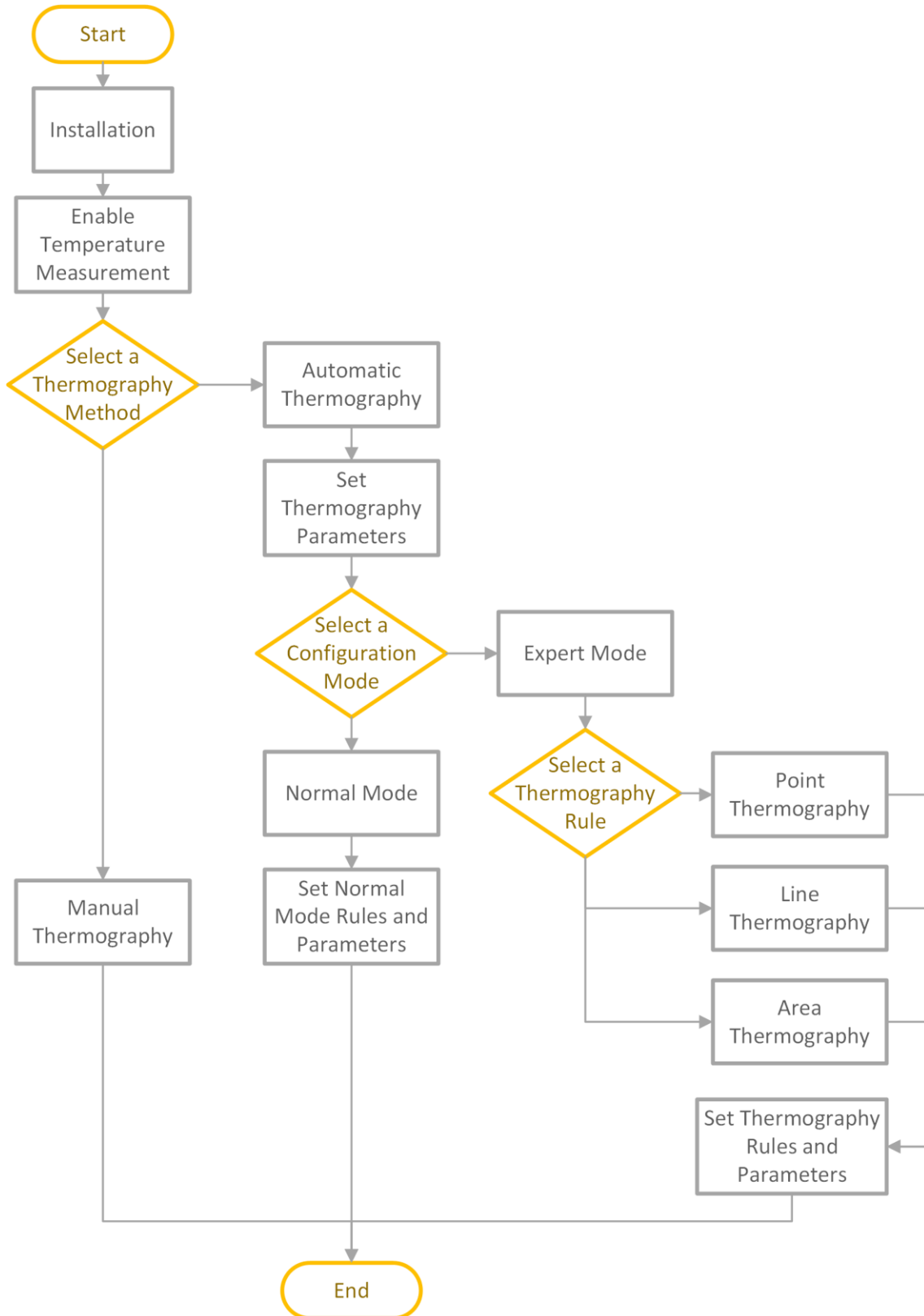


Figure 3-1 Thermography Configuration Flow Chart



## Note

Please refer to the *Quick Start Guide* for detailed information of Installation part in the flow chart.

---

### 3.3.3 Automatic Thermography

Configure the temperature measurement parameters and temperature measurement rules. The device can measure the actual temperature and output alarms when temperature exceeds the alarm threshold value.

#### Set Thermography Parameters

Configure the parameters of temperature measurement.

##### Steps

1. Go to **Configuration** → **Local**, enable **Display Temperature Info.** .

##### Display Temperature Info.

Select **Yes** to display temperature information on live view.

Enable **Rules** to display the rules information on live view.

2. Click **Save**.

3. Go to **Configuration** → **Temperature Measurement** → **Basic Settings** to configure parameters.

##### Enable Temperature Measurement

Check to enable temperature measurement function.

##### Enable Color-Temperature

Check to display Color-Temperature Ruler in live view.

##### Display Temperature Info. on Stream

Check to display temperature information on the stream.

##### Display Temperature in Optical Channel

Check to display thermal channel temperature information in the optical channel.

##### Display Max./Min./Average Temperature

Check to display maximum/minimum/average temperature information on live view when the temperature measurement rule is line or area.

##### Position of Thermometry Info

Select the position of temperature information showed on the live view.

##### Near Target

Display the information beside the temperature measurement rule.

##### Top Left

Display the information on the top left of screen.

### Add Original Data on Capture

Check to add data on alarm triggered capture of thermal channel.

### Add Original Data on Stream

Check to add original data on thermal view.

### Data Refresh Interval

It means the refresh interval of temperature information.

### Unit

Display temperature with Degree Celsius (°C)/Degree Fahrenheit (°F)/Degree Kelvin (K).

### Temperature Range

Select the temperature measurement range.

### Version

View the version of current algorithm.

4. Click **Save**.

### What to do next

- If there is a black body in the detection scene, go to **Configuration** → **Temperature Screening** → **Temperature Screening Configuration** to set the black body parameters to increase temperature measurement accuracy. See [Set Black Body Correction](#) for instructions.
- If the actual temperature of a target is slightly different from its surface temperature taken by the device, you can add temperature compensation value to the measurement to show a more accurate temperature. Go to **Configuration** → **Temperature Screening** → **Temperature Screening Configuration** to [Set Temperature Compensation](#).

### Set Normal Mode

This function is used to measure the temperature of the whole scene and alarm.

#### Steps

1. Go to **Configuration** → **Temperature Measurement** → **Basic Settings**, and check **Enable Temperature Measurement**.
2. Refer to [Set Thermography Parameters](#) to set the parameters.
3. Go to **Configuration** → **Temperature Measurement** → **Advanced Settings**, and select **Normal**.
4. Configure the parameters of normal mode.

#### Emissivity

Set the emissivity of your target. The emissivity of each object is different.

#### Distance

The distance between the target and the device.

#### Pre-Alarm Threshold

When the temperature of target exceeds the pre-alarm threshold, and this status keeps more than **Filtering Time**, it triggers pre-alarm.

### Alarm Threshold

When the temperature of target exceeds the alarm threshold, and this status keeps more than **Filtering Time**, it triggers alarm.

### Pre-Alarm Output and Alarm Output

Check **Pre-Alarm Output** and **Alarm Output** to link the pre-alarm or alarm with the connected alarm device.

5. Refer to **Set Arming Schedule** for setting scheduled time. Refer to **Linkage Method Settings** for setting linkage method.
6. Click **Save**.  
The maximum and minimum temperature will be displayed on the live view.

---

### Note

Go to **Image** → **VCA Rules Display** to adjust the fonts size and the temperature colour of normal, alarm and pre-alarm.

---

## Set Expert Mode

Select the temperature measurement rules from **Point**, **Line**, or **Area** and configure parameters, the device alarms if the alarm rules are met.

### Steps

1. Go to **Configuration** → **Temperature Measurement** → **Basic Settings**, check **Enable Temperature Measurement**.
2. Refer to **Set Thermography Parameters** to set the parameters.
3. Go to **Configuration** → **Temperature Measurement** → **Advanced Settings**, select **Expert**.
4. Select and enable the temperature measurement rules. Please refer to **Set Thermography Rule** for setting the rule.
5. Optional: Click **Area's Temperature Comparison** to set the alarm rules and the temperature.
6. Refer to **Set Arming Schedule** for setting scheduled time. Refer to **Linkage Method Settings** for setting linkage method.
7. Click **Save**.  
The maximum temperature and thermography rules will be displayed on the liveview.

---

### Note

Go to **Image** → **VCA Rules Display** to adjust the fonts size and the temperature colour of normal, alarm and pre-alarm.

---

8. Optional: Call the preset and check if the rules are efficient.
9. Enable the scan function of device, such as linear scan to monitor the scene.

## Set Thermography Rule

### Steps

1. Customize the rule name.
2. Select the rule **type** to Point, Line, or Area. Then draw a point, line, or area on the interface where the position to be measured.

**Point** Please refer to [\*\*Point Thermography\*\*](#) for detailed configuration.

**Line** Please refer to [\*\*Line Thermography\*\*](#) for detailed configuration.

**Area** Please refer to [\*\*Area Thermography\*\*](#) for detailed configuration.

3. Configure the temperature measurement parameters.

#### Emissivity

Set the emissivity of the target. The emissivity of the surface of a material is its effectiveness in emitting energy as thermal radiation. Different objects have different emissivity. Refer to [\*\*Common Material Emissivity Reference\*\*](#) to search for the target emissivity..

#### Distance

The distance between the target and the device.

#### Reflective Temperature

If there is any object with high emissivity in the scene, check and set the reflective temperature to correct the temperature. The reflective temperature should be set the same as the temperature of the high emissivity object.

4. Click  and set the **Alarm Rule**.

#### Alarm Temperature and Pre-Alarm Temperature

Set the alarm temperature and pre-alarm temperature. E.g., select Alarm Rule as Above (Average Temperature), set the Pre-Alarm Temperature to 50 °C, and set the Alarm Temperature to 55 °C. The device pre-alarms when its average temperature is higher than 50 °C and alarms when its average temperature is higher than 55 °C.

#### Filtering Time

It refers to the duration time after the target temperature reaches or exceeds the pre-alarm temperature/alarm temperature.

#### Tolerance Temperature

Set the tolerance temperature to prevent the constant temperature change to affect the alarm. E.g., set tolerance temperature as 3°C, set alarm temperature as 55°C, and set pre-alarm temperature as 50°C. The device sends pre-alarm when its temperature reaches 50°C and it alarms when its temperature reaches 55°C and only when the device temperature is lower than 52°C will the alarm be cancelled.

#### Pre-Alarm Output and Alarm Output

When the temperature of target exceeds the pre-alarm or alarm threshold, it triggers the pre-



alarm or alarm output of the connected device.

### **Area's Temperature Comparison**

Select two areas and set the comparison rule, and set the temperature difference threshold. The device alarms when the temperature difference meets the setting value.

5. Click **Save**.

Click **Live View**, and select thermal channel to view the temperature and rules information on live view.

### **Point Thermography**

Configure the temperature measurement rule and click any point in live view to monitor the temperature.

#### **Steps**

1. Click in the live view and a cross cursor showed on the interface.
2. Drag the cross cursor to desired position.  
Go to **Live View** interface to view the temperature and rule of the point in thermal channel.

### **Line Thermography**

Configure the temperature measurement rule and monitor the maximum temperature of the line.

#### **Steps**

1. Click and drag the mouse to draw a line in the live view interface.
2. Click and move the line to adjust the position.
3. Click and drag the ends of the line to adjust the length.  
Go to **Live View** interface to view the maximum temperature and rule of the line in thermal channel.

### **Area Thermography**

Configure the temperature measurement rule and monitor the maximum temperature of the area.

#### **Steps**


1. Click and drag the mouse in the liveview to draw the area and right click to finish drawing.
2. Click and move the area to adjust the position.
3. Drag the corners of the area to adjust the size and shape.  
Go to **Live View** interface to view the maximum temperature and rule of the area in thermal channel.

### **3.3.4 Manual Thermography**

After enable the manual thermography function of the device, you can click any position on the

live view to show the real temperature.

### Steps

1. Go to **Configuration** → **Local** and select **Display Temperature Info.** as **Yes**.
2. Go to **Configuration** → **Temperature Measurement** → **Basic Settings**.
3. Check **Enable Temperature Measurement**.
4. Click **Save**.
5. Go to live view interface and select thermal channel, click . Click any position on the interface to show the real temperature.

### What to do next

- If there is a black body in the detection scene, go to **Configuration** → **Temperature Screening** → **Temperature Screening Configuration** to set the black body parameters to increase temperature measurement accuracy. See [Set Black Body Correction](#) for instructions.
- If the actual temperature of a target is slightly different from its surface temperature taken by the device, you can add temperature compensation value to the measurement to show a more accurate temperature. Go to **Configuration** → **Temperature Screening** → **Temperature Screening Configuration** to [Set Temperature Compensation](#).

## 3.3.5 Set Black Body Correction

If there is a black body in the detection scene, you can set the black body correction increase temperature accuracy.

### Steps

1. Check **Enable Black Body Correction**.
2. Set the black body parameters.

#### Emissivity

Refer to [Common Material Emissivity Reference](#) to set the emissivity of black body.

#### Distance

The distance between the black body and the device.

#### Temperature

Enter the temperature of the black body.

3. Select a position marking mode from **Set Black Body Position**, and mark the black body position in the scene.

---

### Note

The Frame Mode may not be supported under certain VCA type or by certain device models.

---

#### Point

1. Select **Point**.
2. Click **Draw Area**.
3. Click on the black body in the live image to show a blue dot.

### Frame

1. Select **Frame**.
2. Click **Draw Area**.
3. Click and drag the mouse on the live image to frame the black body with a blue rectangle.

---

### Note

- The rectangle should be TWICE the size of the black body, and there should be no high-temperature object in the area.
  - DO NOT move the black body out of the rectangle.
- 

### 3.3.6 Set Temperature Compensation

The temperature compensation is often used when the actual temperature of a target is slightly different from its surface temperature taken by the device.

#### Steps

1. Check **Enable**.
2. Select a mode from **Environment Temperature Mode** to set the environment temperature.

**Auto**                      The device measures the environment temperature automatically.

**Manual**                     Take the environment temperature and enter the value in **Environment Temperature**.

3. Set a **Compensation Type**.

**Auto**                         The device calculates compensation value automatically. If the detected target temperature is still inaccurate, you can switch to **Manual** mode.

**Manual**                     Enter a compensation value in **Manual Calibration**. 0 means that the detected target surface temperature equals to the inner temperature.

### 3.4 Temperature Screening

The function can accurately screen out targets with alarming temperature in the scene, and

output alarm if the temperature is higher than the setting value.

### 3.4.1 Set Thermography Parameters

Configure the basic parameters of temperature screening.

#### Before You Start

Go to **Configuration** → **System** → **Maintenance** → **VCA Resource Type**, select **Temperature Screening**.

#### Steps

1. Go to **Configuration** → **Temperature Screening** → **Basic Settings** to configure the parameters.

##### Enable Temperature Measurement

Check to enable temperature screening function.

##### Display Temperature Info. on Stream

Check to display temperature information on the stream.

##### Add Original Data on Capture

Check to add data on alarm triggered capture of thermal channel.

##### Add Original Data on Stream

Check to add original data on thermal view.

##### Display Temperature in Alarm Info

Check to add temperature data on alarm pictures.

##### Data Refresh Interval

It means the refresh interval of temperature information.

##### Unit

Display temperature with Degree Celsius (°C)/Degree Fahrenheit (°F)/Degree Kelvin (K).

##### Temperature Range

Select the temperature measurement range.

##### Distance

Set the distance between device and the target. You can set **Distance Mode** as **Self-Adaption** or **Fixed Distance**. In self-adaption mode, the device adjusts the distance between the target and the device automatically according to the pupil distance. If the distance between the target and device is fixed, you can select **Fixed Distance**.

##### Emissivity

Set the emissivity of your target.

##### Version

View the version of current algorithm.

2. Click **Save**.

## Chapter 4 Event and Alarm

This part introduces the configuration of events. The device takes certain response to triggered alarm.

### 4.1 Set Motion Detection

It helps to detect the moving objects in the detection region and trigger the linkage actions.

#### Steps

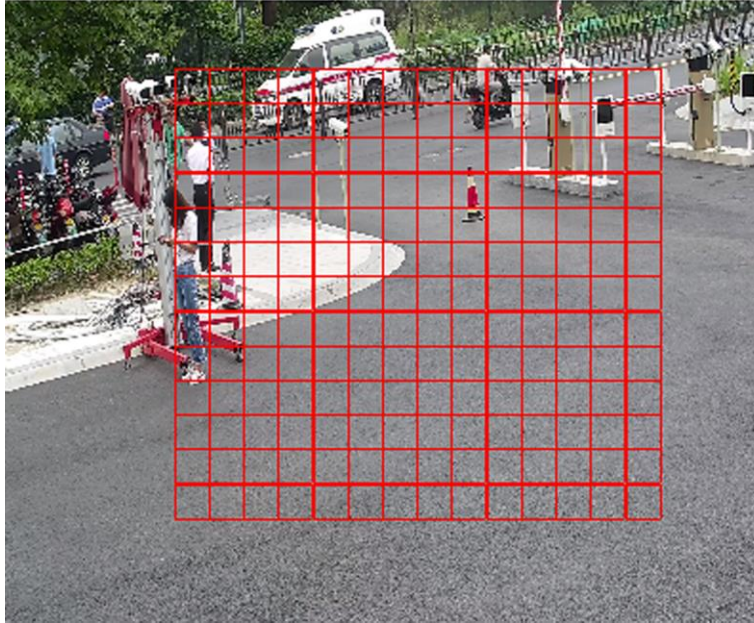
1. Go to **Configuration** → **Event** → **Basic Event** → **Motion Detection**.
2. Select the channel No.
3. Check **Enable Motion Detection**.
4. Optional: Highlight to display the moving object in the image in green.
  - 1) Check **Enable Dynamic Analysis for Motion**.
  - 2) Go to **Configuration** → **Local**.
  - 3) Set **Rules** to **Enable**.
5. Select **Configuration Mode**, and set rule region and rule parameters.
  - For the information about normal mode, see **Normal Mode**.
  - For the information about expert mode, see **Expert Mode**.
6. Set the arming schedule and linkage methods. For the information about arming schedule settings, see **Set Arming Schedule**. For the information about linkage methods, see **Linkage Method Settings**.
7. Click **Save**.

#### 4.1.1 Normal Mode

You can set motion detection parameters according to the device default parameters.

#### Steps

1. Select normal mode in **Configuration**.
2. Set the sensitivity of normal mode. The higher the value of sensitivity is, the more sensitive the motion detection is. If the sensitivity is set to **0**, motion detection and dynamic analysis do not take effect.
3. Click **Draw Area**. Click and drag the mouse on the live video, then release the mouse to finish drawing one area.



**Figure 4-1 Set Rules**

**Stop Drawing**                      Stop drawing one area.

**Clear All**                              Clear all the areas.

4. Optional: You can set the parameters of multiple areas by repeating the above steps.

### **4.1.2 Expert Mode**

You can configure the motion detection parameters of day/night switch according to the actual needs.

#### **Steps**

1. Select expert mode in **Configuration**.
2. Set parameters of expert mode.

#### **Day/Night Switch**

OFF: Day/night switch is disabled.

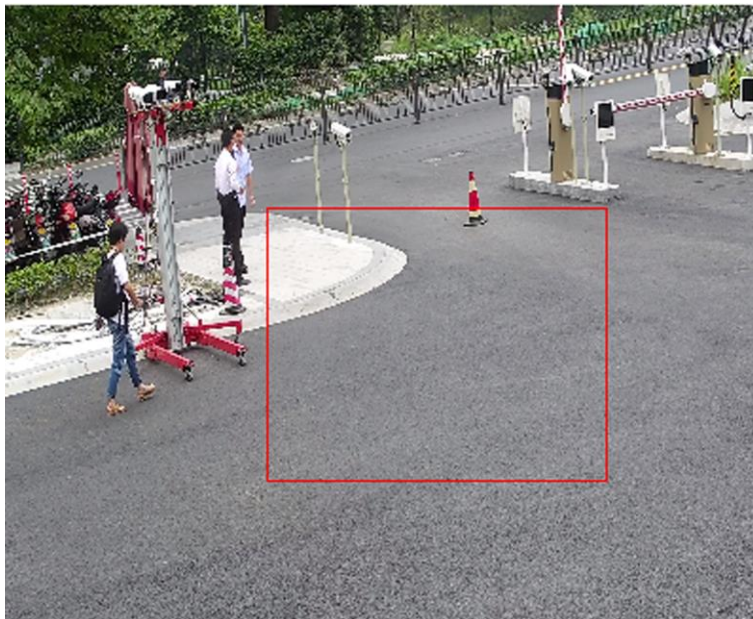
Day/Night Auto-Switch: The system switches day/night mode automatically according to environment. It displays colored image at day and black and white image at night.

Day/Night Scheduled-Switch: The system switches day/night mode according to the schedule. It switches to day mode during the set periods and switches to night mode during the other periods.

#### **Sensitivity**

The higher the value of sensitivity is, the more sensitive the motion detection is. If the sensitivity is set to **0**, motion detection and dynamic analysis do not take effect.

3. Select an **Area** and click **Draw Area**. Click and drag the mouse on the live video, then release the mouse to finish drawing one area.



**Figure 4-2 Set Rules**

**Stop Drawing**                      Finish drawing one area.

**Clear All**                              Delete all the areas.

4. Optional: Repeat the above steps to set multiple areas.

## 4.2 Set Video Tampering Alarm

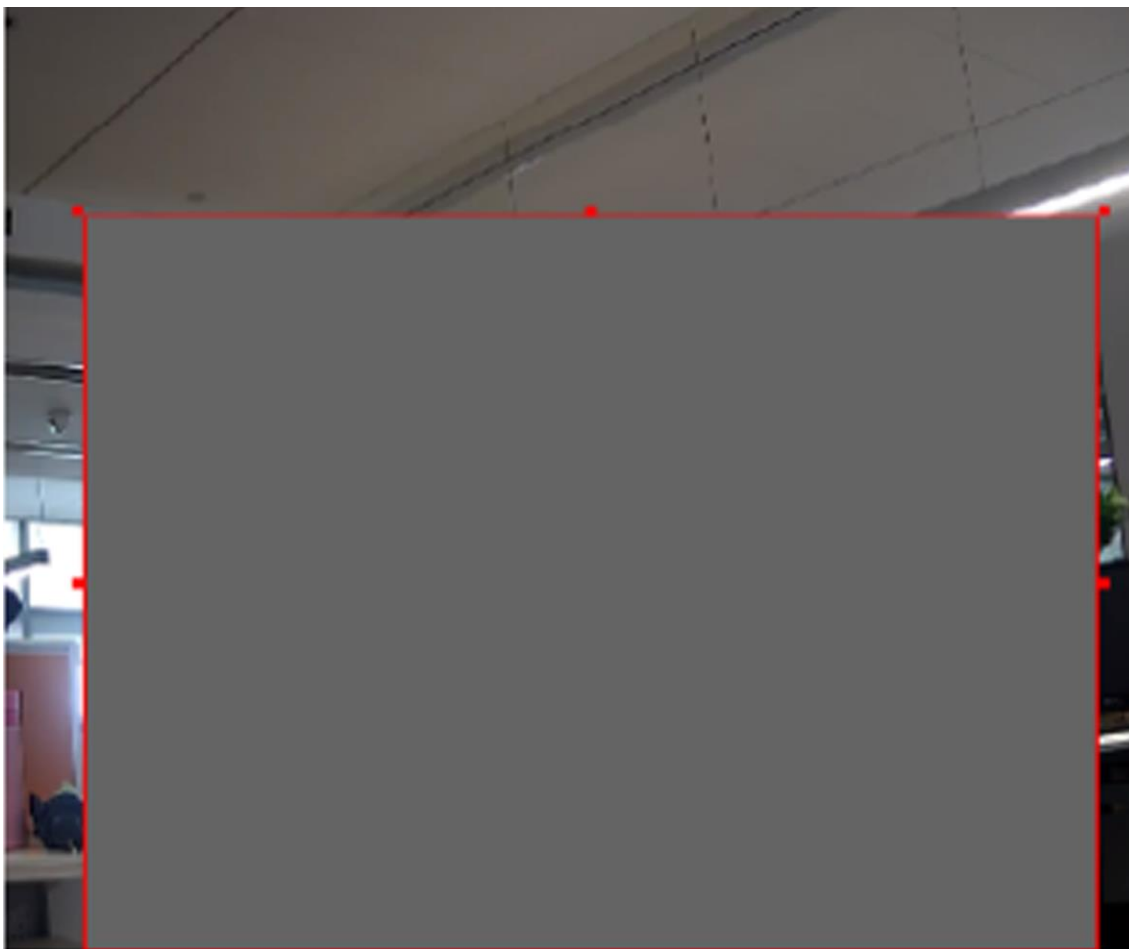
When the configured area is covered and cannot be monitored normally, the alarm is triggered and the device takes certain alarm response actions.

### Steps

1. Go to **Configuration** → **Event** → **Basic Event** → **Video Tampering**.
2. Select the channel number.
3. Check **Enable**.
4. Set the **Sensitivity**. The higher the value is, the easier to detect the area covering.
5. Click **Draw Area** and drag the mouse in the live view to draw the area.

**Stop Drawing**                      Finish drawing.

**Clear All**                              Delete all the drawn areas.



**Figure 4-3 Set Video Tampering Area**

6. Refer to **Set Arming Schedule** for setting scheduled time. Refer to **Linkage Method Settings** for setting linkage method.
7. Click **Save**.

### 4.3 Set Alarm Input

Alarm signal from the external device triggers the corresponding actions of the current device.

#### Before You Start

Make sure the external alarm device is connected. See *Quick Start Guide* for cable connection.

#### Steps

1. Go to **Configuration** → **Event** → **Basic Event** → **Alarm Input**.
2. Check **Enable Alarm Input Handling**.
3. Select **Alarm Input NO.** and **Alarm Type** from the dropdown list. Edit the **Alarm Name**.
4. Refer to **Set Arming Schedule** for setting scheduled time. Refer to **Linkage Method Settings** for setting linkage method.
5. Click **Copy to...** to copy the settings to other alarm input channels.



6. Click **Save**.

## 4.4 Set Exception Alarm

Exception such as network disconnection can trigger the device to take corresponding action.

### Steps

1. Go to **Configuration** → **Event** → **Basic Event** → **Exception**.
2. Select **Exception Type**.

<b>HDD Full</b>	The HDD storage is full.
<b>HDD Error</b>	Error occurs in HDD.
<b>Network Disconnected</b>	The device is offline.
<b>IP Address Conflicted</b>	The IP address of current device is same as that of other device in the network.
<b>Illegal Login</b>	Incorrect user name or password is entered.

3. Refer to [Linkage Method Settings](#) for setting linkage method.
4. Click **Save**.

## 4.5 Detect Audio Exception

Audio exception detection function detects the abnormal sound in the video security scene, such as the sudden increase/decrease of the sound intensity, and some certain actions can be taken as response.

### Steps

1. Go to **Configuration** → **Event** → **Smart Event** → **Audio Exception Detection**.
2. Select one or several audio exception detection types.

#### Audio Loss Detection

Detect sudden loss of audio track.

#### Sudden Increase of Sound Intensity Detection

Detect sudden increase of sound intensity. **Sensitivity** and **Sound Intensity Threshold** are configurable.

---

#### Note

- The lower the sensitivity is, the more significant the change should be to trigger the detection.
- The sound intensity threshold refers to the sound intensity reference for the detection. It is

recommended to set as the average sound intensity in the environment. The louder the environment sound, the higher the value should be. You can adjust it according to the real environment.

---

### **Sudden Decrease of Sound Intensity Detection**

Detect sudden decrease of sound intensity. **Sensitivity** is configurable.

3. Refer to **Set Arming Schedule** for setting scheduled time. Refer to **Linkage Method Settings** for setting linkage methods.
  4. Click **Save**.
- 

#### **Note**

The function varies according to different models.

---

## Chapter 5 Arming Schedule and Alarm Linkage

Arming schedule is a customized time period in which the device performs certain tasks. Alarm linkage is the response to the detected certain incident or target during the scheduled time.

### 5.1 Set Arming Schedule

Set the valid time of the device tasks.

#### Steps

1. Click **Arming Schedule**.
2. Drag the time bar to draw desired valid time.



Up to 8 periods can be configured for one day.

---

3. Adjust the time period.
  - Click on the selected time period, and enter the desired value. Click **Save**.
  - Click on the selected time period. Drag the both ends to adjust the time period.
  - Click on the selected time period, and drag it on the time bar.
4. Optional: Click **Copy to...** to copy the same settings to other days.
5. Click **Save**.

### 5.2 Linkage Method Settings

You can enable the linkage functions when an event or alarm occurs.

#### 5.2.1 Trigger Alarm Output

If the device has been connected to an alarm output device, and the alarm output No. has been configured, the device sends alarm information to the connected alarm output device when an alarm is triggered.

#### Steps

1. Go to **Configuration** → **Event** → **Basic Event** → **Alarm Output**.
2. Set alarm output parameters.

**Automatic Alarm**      For the information about the configuration, see [Automatic Alarm](#).

**Manual Alarm**      For the information about the configuration, see [Manual Alarm](#).

3. Click **Save**.

### Manual Alarm

You can trigger an alarm output manually.

#### Steps

1. Set the manual alarm parameters.

##### Alarm Output No.

Select the alarm output No. according to the alarm interface connected to the external alarm device.

##### Alarm Name

Edit a name for the alarm output.

##### Delay

Select **Manual**.

2. Click **Manual Alarm** to enable manual alarm output.
3. Optional: Click **Clear Alarm** to disable manual alarm output.

### Automatic Alarm

Set the automatic alarm parameters, then the device triggers an alarm output automatically in the set arming schedule.

#### Steps

1. Set automatic alarm parameters.

##### Alarm Output No.

Select the alarm output No. according to the alarm interface connected to the external alarm device.

##### Alarm Name

Custom a name for the alarm output.

##### Delay

It refers to the time duration that the alarm output remains after an alarm occurs.

2. Set the alarming schedule. For the information about the settings, see **Set Arming Schedule**.
3. Click **Copy to...** to copy the parameters to other alarm output channels.
4. Click **Save**.

### 5.2.2 FTP/NAS/Memory Card Uploading

If you have enabled and configured the FTP/NAS/memory card uploading, the device sends the alarm information to the FTP server, network attached storage and memory card when an alarm is

triggered.

Refer to **Set FTP** to set the FTP server.

Refer to **Set NAS** for NAS configuration.

Refer to **Set Memory Card** for memory card storage configuration.

### 5.2.3 Send Email

Check **Send Email**, and the device sends an email to the designated addresses with alarm information when an alarm event is detected.

For email settings, refer to **Set Email**.

#### Set Email

When the email is configured and **Send Email** is enabled as a linkage method, the device sends an email notification to all designated receivers if an alarm event is detected.

#### Before You Start

Set the DNS server before using the Email function. Go to **Configuration** → **Network** → **Basic Settings** → **TCP/IP** for DNS settings.

#### Steps

1. Go to email settings page: **Configuration** → **Network** → **Advanced Settings** → **Email**.
2. Set email parameters.
  - 1) Input the sender's email information, including the **Sender's Address**, **SMTP Server**, and **SMTP Port**.
  - 2) Optional: If your email server requires authentication, check **Authentication** and input your user name and password to log in to the server.
  - 3) Set the **E-mail Encryption**.
    - When you select **SSL** or **TLS**, and disable **STARTTLS**, emails are sent after encrypted by SSL or TLS. The SMTP port should be set as 465.
    - When you select **SSL** or **TLS** and **Enable STARTTLS**, emails are sent after encrypted by STARTTLS, and the SMTP port should be set as 25.

---

#### Note

If you want to use STARTTLS, make sure that the protocol is supported by your email server. If you check the **Enable STARTTLS** while the protocol is not supported by your email sever, your email is sent with no encryption.

---

- 4) Optional: If you want to receive notification with alarm pictures, check **Attached Image**.

### Note

Attached image is only supported in the email notification triggered by Temperature Measurement alarms and No Wearing Mask alarms.

---

- If you check **Upload Optical Picture** only, a notification email has 3 captured images of the optical channel with configurable capture interval.
- If you check **Upload Thermal Picture** only, a notification email has 3 captured images of the thermal channel with configurable capture interval.
- If you check both **Upload Optical Picture** and **Upload Thermal Picture**
  - When the VCA type is Temperature Screening, the notification is attached with 1 target image, 1 optical channel image, and 1 thermal channel image.
  - When the VCA type is Temperature Measurement, the notification is attached with 1 optical channel image and 1 thermal channel image.

5) Input the receiver's information, including the receiver's name and address.

6) Click **Test** to see if the function is well configured.

3. Click **Save**.

### 5.2.4 Notify Surveillance Center

Check **Notify Surveillance Center**, the alarm information is uploaded to the surveillance center when an alarm event is detected.

### 5.2.5 Trigger Recording

Check **Trigger Recording**, and the device records the video about the detected alarm event.

For device with more than one camera channels, you can set one or more channels to take recordings if needed.

For recording settings, refer to [\*\*\*Video Recording and Picture Capture\*\*\*](#)

### 5.2.6 Audible Warning

After enabling **Audible Warning** and setting **Audible Alarm Output**, the built-in speaker of the

device or connected external speaker plays warning sounds when an alarm happens.

For audible alarm output settings, refer to [Set Audible Alarm Output](#).

---

### **Note**

The function is only supported by certain camera models.

---

## Set Audible Alarm Output

When the device detects targets in the detection area, audible alarm can be triggered as a warning.

### Steps

1. Go to **Configuration** → **Event** → **Basic Event** → **Audible Alarm Output**.
  2. Select a **Alarm Type**.
  3. Select **Sound Type** and set related parameters.
    - Select **Warning** and its contents. Set the alarm times you need.
    - Select **Custom Audio**. You can select a custom audio file from the drop-down list. If no file is available, you can click **Add** to upload an audio file that meets the requirement. Up to three audio files can be uploaded.
  4. Optional: Click **Test** to play the selected audio file on the device.
  5. Set arming schedule for audible alarm. See [Set Arming Schedule](#) for details.
  6. Click **Save**.
- 

### **Note**

The function is only supported by certain device models.

---

## 5.2.7 Flashing Light

After enabling **Flashing Light** and setting the **Flashing Light Alarm Output**, the light flashes when an alarm event is detected.

### Set Flashing Alarm Light Output

#### Steps

1. Go to **Configuration** → **Event** → **Basic Event** → **Flashing Alarm Light Output**.
2. Select a **White Light Mode**.

Mode	Description
Flashing	Alarm triggers the light to flash for a certain duration. Set the flashing

---

speed in **Flashing Frequency**.

**Solid**

Alarm triggers the light to turn on for a certain duration.

3. Set the light action duration and the brightness.

**Flashing Duration**

The time period of light on or light flashing when one alarm happens.

**Brightness**

The brightness of the light.

4. Edit the arming schedule.
5. Click **Save**.

---

 **Note**

Only certain camera models support the function.

---



## Chapter 6 Live View

It introduces the live view parameters, function icons and transmission parameters settings.

### 6.1 Live View Parameters

The supported functions vary depending on the model.







#### Note

For multichannel devices, select the desired channel first before live view settings.

---

#### 6.1.1 Window Division



-  refers to 1 × 1 window division.
-  refers to 2 × 2 window division.
-  refers to 3 × 3 window division.
-  refers to 4 × 4 window division.

#### 6.1.2 Live View Stream Type

Select the live view stream type according to your needs. For the detailed information about the stream type selection, refer to *[Stream Type](#)*.

#### 6.1.3 Enable and Disable Live View


This function is used to quickly enable or disable live view of all channels.

- Click  to start live view of all channels.
- Click  to stop live view of all channels.

#### 6.1.4 Start Digital Zoom

It helps to see a detailed information of any region in the image.

##### Steps

1. Click  to enable the digital zoom.
2. In live view image, drag the mouse to select the desired region.
3. Click in the live view image to back to the original image.


### 6.1.5 View Previous/Next Page

When the number of channels surpasses that of live view window division, this function can switch live view among multiple channels.


Click   to switch live view among multiple channels.

### 6.1.6 Full Screen

This function is used to view the image in full screen mode.

Click  to start full screen mode and press ESC button to exit.

### 6.1.7 Light

Click  to turn on or turn off the illuminator.

### 6.1.8 Wiper


For the device that has a wiper, you can control the wiper via web browser.

Click  on live view page. The wiper wipes the window one time.

### 6.1.9 Quick Set Live View

It offers a quick setup of PTZ, display settings, OSD, video/audio and VCA resource settings on live view page.

#### Steps

1. Click  to show quick setup page.
2. Set PTZ, display settings, OSD, video/audio and VCA resource parameters.
  - For display settings, see [Display Settings](#).
  - For OSD settings, see [OSD](#).
  - For audio and video settings, see [Video and Audio](#).
  - For VCA settings, [Temperature Measurement](#), and [Temperature Screening](#).

---

#### Note

The function is only supported by certain models.

---

## 6.2 Set Transmission Parameters

The live view image may be displayed abnormally according to the network conditions. In different

network environments, you can adjust the transmission parameters to solve the problem.

### Steps

1. Go to **Configuration** → **Local**.
2. Set the transmission parameters as required.

### Protocol

#### TCP

TCP ensures complete delivery of streaming data and better video quality, yet the real-time transmission will be affected. It is suitable for the stable network environment.

#### UDP

UDP is suitable for the unstable network environment that does not demand high video fluency.

#### MULTICAST

MULTICAST is suitable for the situation that there are multiple clients. You should set the multicast address for them before selection.

#### HTTP

HTTP is suitable for the situation that the third-party needs to get the stream from the device.

### Play Performance

#### Shortest Delay

The device takes the real-time video image as the priority over the video fluency.

#### Balanced

The device ensures both the real-time video image and the fluency.

#### Fluent

The device takes the video fluency as the priority over real-time. In poor network environment, the device cannot ensure video fluency even the fluency is enabled.

### Auto Start Live View

- **Yes** means the live view is started automatically. It requires a high performance monitoring device and a stable network environment.
- **No** means the live view should be started manually.

3. Click **OK**.

## Chapter 7 Video and Audio

This part introduces the configuration of video and audio related parameters.

### 7.1 Video Settings

This part introduces the settings of video parameters, such as, stream type, video encoding, and resolution.

Go to setting page: **Configuration** → **Video/Audio** → **Video**.

---

#### Note

For device with multiple camera channels, select a channel before other settings.

---

#### 7.1.1 Stream Type

For device supports more than one stream, you can specify parameters for each stream type.

##### Main Stream

The stream stands for the best stream performance the device supports. It usually offers the best resolution and frame rate the device can do. But high resolution and frame rate usually means larger storage space and higher bandwidth requirements in transmission.

##### Sub Stream

The stream usually offers comparatively low resolution options, which consumes less bandwidth and storage space.

##### Other Streams

Streams other than the main stream and sub stream may also be offered for customized usage.

#### 7.1.2 Video Type

Select the content (video and audio) that should be contained in the stream.

##### Video

Only video content is contained in the stream.

##### Video & Audio

Video content and audio content are contained in the composite stream.

### 7.1.3 Resolution

Select video resolution according to actual needs. Higher resolution requires higher bandwidth and storage.

### 7.1.4 Bitrate Type and Max. Bitrate

#### Constant Bitrate

It means that the stream is compressed and transmitted at a comparatively fixed bitrate. The compression speed is fast, but mosaic may occur on the image.

#### Variable Bitrate

It means that the device automatically adjust the bitrate under the set **Max. Bitrate**. The compression speed is slower than that of the constant bitrate. But it guarantees the image quality of complex scenes.

### 7.1.5 Video Quality

When **Bitrate Type** is set as Variable, video quality is configurable. Select a video quality according to actual needs. Note that higher video quality requires higher bandwidth.

### 7.1.6 Frame Rate

The frame rate is to describe the frequency at which the video stream is updated and it is measured by frames per second (fps).

A higher frame rate is advantageous when there is movement in the video stream, as it maintains image quality throughout. Note that higher frame rate requires higher bandwidth and larger storage space.

### 7.1.7 Video Encoding

It stands for the compression standard the device adopts for video encoding.

---

#### Note

Available compression standards vary according to device models.

---

### H.264

H.264, also known as MPEG-4 Part 10, Advanced Video Coding, is a compression standard. Without compressing image quality, it increases compression ratio and reduces the size of video

file than MJPEG or MPEG-4 Part 2.

### H.264+

H.264+ is an improved compression coding technology based on H.264. By enabling H.264+, you can estimate the HDD consumption by its maximum average bitrate. Compared to H.264, H.264+ reduces storage by up to 50% with the same maximum bitrate in most scenes.

When H.264+ is enabled, **Max. Average Bitrate** is configurable. The device gives a recommended max. average bitrate by default. You can adjust the parameter to a higher value if the video quality is less satisfactory. Max. average bitrate should not be higher than max. bitrate.

---

#### Note

When H.264+ is enabled, **Video Quality, I Frame Interval, Profile** and **SVC** are not configurable.

---

### H.265

H.265, also known as High Efficiency Video Coding (HEVC) and MPEG-H Part 2, is a compression standard. In comparison to H.264, it offers better video compression at the same resolution, frame rate and image quality.

### H.265+

H.265+ is an improved compression coding technology based on H.265. By enabling H.265+, you can estimate the HDD consumption by its maximum average bitrate. Compared to H.265, H.265+ reduces storage by up to 50% with the same maximum bitrate in most scenes.

When H.265+ is enabled, **Max. Average Bitrate** is configurable. The device gives a recommended max. average bitrate by default. You can adjust the parameter to a higher value if the video quality is less satisfactory. Max. average bitrate should not be higher than max. bitrate.

---

#### Note

When H.265+ is enabled, **Video Quality, I Frame Interval, Profile** and **SVC** are not configurable.

---

### Profile

This function means that under the same bitrate, the more complex the profile is, the higher the

quality of the image is, and the requirement for network bandwidth is also higher.

### **I-Frame Interval**

I-frame interval defines the number of frames between 2 I-frames.

In H.264 and H.265, an I-frame, or intra frame, is a self-contained frame that can be independently decoded without any reference to other images. An I-frame consumes more bits than other frames. Thus, video with more I-frames, in other words, smaller I-frame interval, generates more steady and reliable data bits while requiring more storage space.

### **SVC**

Scalable Video Coding (SVC) is the name for the Annex G extension of the H.264 or H.265 video compression standard.

The objective of the SVC standardization has been to enable the encoding of a high-quality video bitstream that contains one or more subset bitstreams that can themselves be decoded with a complexity and reconstruction quality similar to that achieved using the existing H.264 or H.265 design with the same quantity of data as in the subset bitstream. The subset bitstream is derived by dropping packets from the larger bitstream.

SVC enables forward compatibility for older hardware: the same bitstream can be consumed by basic hardware which can only decode a low-resolution subset, while more advanced hardware will be able decode high quality video stream.

### **7.1.8 Smoothing**

It refers to the smoothness of the stream. The higher value of the smoothing is, the better fluency of the stream will be, though, the video quality may not be so satisfactory. The lower value of the smoothing is, the higher quality of the stream will be, though it may appear not fluent.

### **7.1.9 Display VCA Info**

VCA information can be displayed by Player and Video.

#### **Player**

Player means the VCA info can be displayed by the dedicated player provided by the manufacturer.

#### **Video**

Video means the VCA info can be displayed by any general video player.

### 7.1.10 Audio Settings

It is a function to set audio parameters such as audio encoding, environment noise filtering.

Go to the audio settings page: **Configuration** → **Video/Audio** → **Audio**.

#### Audio Encoding

Select the audio encoding compression of the audio.

#### Audio Input

---

##### Note

- Connect the audio input device as required.
  - The audio input display varies with the device models.
- 

LinIn	Set <b>Audio Input</b> to <b>LinIn</b> when the device connects to the audio input device with the high output power, such as MP3, synthesizer or active pickup.
MicIn	Set <b>Audio Input</b> to <b>MicIn</b> when the device connects to the audio input device with the low output power, such as microphone or passive pickup.

#### Environmental Noise Filter

Set it as OFF or ON. When the function is enabled, the noise in the environment can be filtered to some extent.

### 7.1.11 Two-way Audio

It is used to realize the two-way audio function between the monitoring center and the target in the monitoring screen.





#### Before You Start

- Make sure the audio input device (pick-up or microphone) and audio output device (speaker) connected to the device is working properly. Refer to specifications of audio input and output devices for device connection.
- If the device has built-in microphone and speaker, two-way audio function can be enabled directly.

#### Steps

1. Click **Live View**.



2. Click  on the toolbar to enable two-way audio function of the camera.
3. Click  and select , move the slider to adjust the volume.
4. Click , disable the two-way audio function.

### 7.1.12 Set ROI

ROI (Region of Interest) encoding helps to assign more encoding resource to the region of interest, thus to increase the quality of the ROI whereas the background information is less focused.

#### Before You Start

Please check the video coding type. ROI is supported when the video coding type is H.264 or H.265.

#### Steps

1. Go to **Configuration** → **Video/Audio** → **ROI**.
2. Check **Enable**.
3. Select the channel No. according to your need.
4. Select **Stream Type**.
5. Select **Region No.** in **Fixed Region** to draw ROI region.
  - 1) Click **Draw Area**.
  - 2) Click and drag the mouse on the view screen to draw the fixed region.
  - 3) Click **Stop Drawing**.

---

#### Note

Select the fixed region that needs to be adjusted and drag the mouse to adjust its position.

---

6. Input the **Region Name** and **ROI Level**.
7. Click **Save**.

---

#### Note

The higher the ROI level is, the clearer the image of the detected region is.

---

8. Optional: Select other region No. and repeat the above steps if you need to draw multiple fixed regions.

### 7.1.13 Metadata

Metadata is the raw data that the device collects before algorithm processing. It is often used for the third party integration.

Go to **Configuration** → **Video/Audio** → **Metadata Settings** to enable metadata uploading of the desired function for the camera channels.

## 7.2 Display Settings

It offers the parameter settings to adjust image features.

Go to **Configuration** → **Image** → **Display Settings**.

For device that supports multiple channels, display settings of each channel is required. The settings for different channels may be different. This part introduces all possible parameters among the channels.

Click **Default** to restore settings.

### 7.2.1 Image Adjustment

By adjusting the **Brightness**, **Saturation**, **Contrast** and **Sharpness**, the image can be best displayed.

### 7.2.2 Image Adjustment (Thermal Channel)

You can optimize the image display effect of thermal channel by setting background correction and manual correction.

#### Background Correction

Fully cover the lens with an object of uniform temperature in front of the lens, such as foam board or paperboard. When you click **Correct**, the device will take the uniform object as the standard and optimize the image once.

#### Manual Correction

Click **Correct** to optimize the image once.

---

#### Note

It is a normal phenomenon that short video freezing might occur during the process of **Background Correction** and **Manual Correction**.

---

#### Thermal AGC Mode

Choose the AGC mode according to different scenes to balance and improve the image quality.

- Histogram: Choose for scene with obvious WDR and high temperature difference, can improve image contrast and enhance image. E.g. the scene contains both indoor and outdoor scenes.
- Linear: Choose for scene with low temperature difference and the target is not obvious, can improve image contrast and enhance image. E.g. the bird in forest.
- Self-Adaptive: Choose AGC mode automatically according to current scene.

### 7.2.3 Exposure Settings

Exposure is controlled by the combination of iris, shutter, and photo sensibility. You can adjust

image effect by setting exposure parameters.

In manual mode, you need to set **Exposure Time**, **Gain** and **Slow Shutter**.

### 7.2.4 Set Supplement Light

#### Steps

1. Go to **Configuration** → **Maintenance** → **System Service**.
2. Check **Enable Supplement Light**.
3. Click **Save**.
4. Go to **Configuration** → **Image** → **Display Settings** → **Day/Night Switch** to set supplement light parameters.

#### Smart Supplement Light

This feature uses smart image processing technology to reduce overexposure caused by supplement light.

#### IR Light Mode

When the mode is set to **Auto**, the supplement light is automatically enabled or disabled according to the image brightness.

#### Brightness Limit

Adjust the upper limit of IR light power.

### 7.2.5 BLC

If you focus on an object against strong backlight, the object will be too dark to be seen clearly. BLC (backlight compensation) compensates light to the object in the front to make it clear. If BLC mode is set as **Custom**, you can draw a red rectangle on the live view image as the BLC area.

### 7.2.6 WDR

The WDR (Wide Dynamic Range) function helps the camera provide clear images in environment with strong illumination differences.

When there are both very bright and very dark areas simultaneously in the field of view, you can enable the WDR function and set the level. WDR automatically balances the brightness level of the whole image and provides clear images with more details.

---

#### Note

When WDR is enabled, some other functions may be not supported. Refer to the actual interface for details.

---

## 7.2.7 White Balance

White balance is the white rendition function of the camera. It is used to adjust the color temperature according to the environment.

## 7.2.8 DNR

Digital Noise Reduction is used to reduce the image noise and improve the image quality. **Normal** and **Expert** modes are selectable.

### Normal

Set the DNR level to control the noise reduction degree. The higher level means stronger reduction degree.

### Expert

Set the DNR level for both space DNR and time DNR to control the noise reduction degree. The higher level means stronger reduction degree.

## 7.2.9 Set Palette

You can select the palette mode to display the thermal grayscale image to colored image.

### Steps

1. Go to **Configuration** → **Image** → **Display Settings**.
2. Select the thermal channel.
3. Select a palette mode in **Image Enhancement** according to your need.

### Result

The live view displays the image with palette.

## 7.2.10 Set Target Enhancement

You can set the color of the targets in different temperature ranges to identify the target quickly.

### Steps

1. Go to **Configuration** → **Image** → **Display Settings**.
2. Select the thermal channel.
3. Click **Image Enhancement**, select **Palette** as **White Hot** or **Black Hot**.
4. Set the temperature value and color of **High Temperature**, **Interval Temperature**, or **Low Temperature** targets.

### Above (be colored)

When the target of high temperature needs to be colored, you can set the high temperature color. Target above the setting temperature will be displayed in setting color.

### Between (be colored)

When the target of an interval temperature needs to be colored, you can set the interval temperature color. Target between the minimum and the maximum temperatures will be displayed in setting color.

### **Below (be colored)**

When the target of low temperature needs to be colored, you can set the low temperature color. Target below the setting temperature will be displayed in setting color.

5. Click **Save**.

## **7.2.11 Brightness Sudden Change**

When the brightness of target and the background is hugely different (the temperature difference of target and background is huge), the system reduces the difference for viewing.

## **7.2.12 Enhance Regional Image**

You can select the desired area of image to improve the coding quality. The regional image will be more detailed and clear.

### **Steps**

1. Go to **Configuration** → **Image** → **Display Settings** → **Image Enhancement**.
2. Select the area of regional image enhancement. You can select **OFF** to disable this function, or select **Custom Area** to draw a desired area.

A red rectangle shows on the display, in which the image quality is improved.

## **7.2.13 Mirror**

When the live view image is the reverse of the actual scene, this function helps to display the image normally.

Select the mirror mode as needed.

---

### **Note**

The video recording will be shortly interrupted when the function is enabled.

---

## **7.2.14 Digital Zoom**

You can zoom in the image. The larger the zoom size is, the more blurred the image is.

## **7.2.15 Scene Mode**

There are several sets of image parameters predefined for different installation environments.

Select a scene according to the actual installation environment to speed up the display settings.

### 7.2.16 Local Video Output

If the device is equipped with video output interfaces, such as BNC, CVBS, HDMI, and SDI, you can preview the live image directly by connecting the device to a monitor screen.

Select the output mode as ON/OFF to control the output.

## 7.3 OSD

You can customize OSD (On-screen Display) information such as device name, time/date, font, color, and text overlay displayed on video stream.

Go to OSD setting page: **Configuration** → **Image** → **OSD Settings**. Set the corresponding parameters, and click **Save** to take effect.

### Character Set

Select character set for displayed information. If Korean is required to displayed on screen, select **EUC-KR**. Otherwise, select **GBK**.

### Displayed Information

Set camera name, date, week, and their related display format.

### Text Overlay

Set customized overlay text on image.

### OSD Parameters

Set OSD parameters, such as **Display Mode**, **OSD Size**, **Font Color**, and **Alignment**.

## 7.4 Set Picture in Picture

You can overlay the images of two channels and view the image of two channels at the same time.

### Steps

1. Select a channel number.
2. Select the picture in picture mode.

**Overlap Mode**                      Partial image of thermal channel is displayed on the full screen of optical channel. This mode is only supported in optical channel.

**Details Overlay Mode**              The device displays the details of optical channel on thermal channel. This mode is only supported in thermal channel.

3. In **Details Overlay Mode**, set the **Fusion Distance** of the target. It is recommended to use the default value.

4. Click **Save**.



Not all models support this function, take the actual product for reference.

---

## 7.5 VCA Rule Display Settings

The VCA rule display refers to the function that you can customize the displayed overlay information of the VCA rule, which includes the font size and line and frame color.

You can go to **Configuration** → **Image** → **VCA Rule Display** to select the desired font size, and set the line and frame color.

## 7.6 Set Privacy Mask

The function blocks certain areas in the live view to protect privacy. No matter how the device moves, the blocked scene will never be seen.

### Steps

1. Go to privacy mask setting page: **Configuration** → **Image** → **Privacy Mask**.
2. Select the channel No.
3. Check **Enable Privacy Mask**.
4. Click **Draw Area**. Drag the mouse in the live view to draw a closed area.

**Drag the corners of the area**      Adjust the size of the area.

**Drag the area**      Adjust the position of the area.

**Click Clear All**      Clear all the areas you set.

5. Click **Stop Drawing**.
6. Click **Save**.

## 7.7 Overlay Picture

Overlay a customized picture on live view.

### Before You Start

The picture to overlay has to be in BMP format with 24-bit, and the maximum picture size is 128 × 128 pixel.

### Steps



1. Go to picture overlay setting page: **Configuration** → **Image** → **Picture Overlay**.

2. Select a channel to overlay picture.
3. Click **Browse** to select a picture, and click **Upload**.  
The picture with a red rectangle will appear in live view after successfully uploading.
4. Check **Enable Picture Overlay**.
5. Drag the picture to adjust its position.
6. Click **Save**.

### 7.8 Set Manual DPC (Defective Pixel Correction)



If the amount of defective pixels in the image is comparatively small and accurate correction is needed, you can correct these pixels manually.

#### Steps

1. Go to **Configuration** → **Image** → **DPC**.
2. Select the thermal channel.
3. Select manual mode.
4. Click the defective pixel on the image, then a cursor shows on the live view.
5. Click **Up, Down, Left, Right** to adjust the cursor position to the defective pixel position.
6. Click , then click  to correct defective pixel.

---

#### Note

If multiple defective pixels need to be corrected, click  after locating a defective pixel. Then after locating other pixels, click  to correct them simultaneously.

---

7. Optional: Click  to cancel defective pixel correction.



## Chapter 8 Video Recording and Picture Capture

This part introduces the operations of capturing video clips and snapshots, playback, and downloading captured files.

### 8.1 Storage Settings

This part introduces the configuration of several common storage paths.

#### 8.1.1 Set Memory Card

If you choose to store the files to memory card, make sure you insert and format the memory card in advance.

##### Before You Start

Insert the memory card to the camera. For detailed installation, refer to *Quick Start Guide* of the camera.

##### Steps

1. Go to storage management setting page: **Configuration** → **Storage** → **Storage Management** → **HDD Management**.
2. Select the memory card, and click **Format** to start initializing the memory card.  
The **Status** of memory card turns to **Normal** from **Uninitialized**, which means the memory card can be used normally.
3. Optional: Define the **Quota** of the memory card. Input the quota percentage for different contents according to your need.
4. Click **Save**.

#### 8.1.2 Set NAS

Take network server as network disk to store the record files, captured images, etc.

##### Before You Start

Get the IP address of the network disk first.

##### Steps

1. Go to NAS setting page: **Configuration** → **Storage** → **Storage Management** → **Net HDD**.
2. Click **HDD No.** Select **Mounting Type** and set parameters for the disk.

##### Server Address

The IP address of the network disk.

##### File Path

The saving path of network disk files.

### User Name and Password

The user name and password of the net HDD.

3. Click **Test** to check whether the network disk is available.
4. Click **Save**.

### 8.1.3 Set FTP

You can configure the FTP server to save images which are captured by events or a timed snapshot task.

#### Before You Start

Get the FTP server address first.

#### Steps

1. Go to **Configuration** → **Network** → **Advanced Settings** → **FTP**.
2. Configure FTP settings.

#### Server Address and Port

The FTP server address and corresponding port.

#### User Name and Password

The FTP user should have the permission to upload pictures.

If the FTP server supports picture uploading by anonymous users, you can check **Anonymous** to hide your device information during uploading.

#### Directory Structure

The saving path of snapshots in the FTP server.

3. Click **Upload Picture** to enable uploading snapshots to the FTP server.
4. Click **Test** to verify the FTP server.
5. Click **Save**.

### 8.1.4 Set Cloud Storage

It helps to upload the captured pictures and data to the cloud. The platform requests picture directly from the cloud for picture and analysis. The function is only supported by certain models.

#### Steps



If the cloud storage is enabled, the pictures are stored in the cloud video manager firstly.

---

1. Go to **Configuration** → **Storage** → **Storage Management** → **Cloud Storage**.
2. Check **Enable Cloud Storage**.

3. Set basic parameters.

<b>Protocol Version</b>	The protocol version of the cloud video manager.
<b>Server IP</b>	The IP address of the cloud video manager. It supports IPv4 address.
<b>Serve Port</b>	The port of the cloud video manager. You are recommended to use the default port.
<b>AccessKey</b>	The key to log in to the cloud video manager.
<b>SecretKey</b>	The key to encrypt the data stored in the cloud video manager.
<b>User Name and Password</b>	The user name and password of the cloud video manager.
<b>Picture Storage Pool ID</b>	The ID of the picture storage region in the cloud video manager. Make sure storage pool ID and the storage region ID are the same.

4. Click **Test** to test the configured settings.

5. Click **Save**.

## 8.2 Video Recording

This part introduces the operations of manual and scheduled recording, playback, and downloading recorded files.

### 8.2.1 Record Automatically

This function can record video automatically during configured time periods.

#### Before You Start

Select **Trigger Recording** in event settings for each record type except **Continuous**. See [\*Event and Alarm\*](#) for details.

#### Steps

1. Go to **Configuration** → **Storage** → **Schedule Settings** → **Record Schedule**.
2. Select channel No.
3. Check **Enable**.
4. Select a record type.

---

#### **Note**

The record type varies according to different models.

---

#### **Continuous**

The video will be recorded continuously according to the schedule.

### **Motion**

When motion detection is enabled and trigger recording is selected as linkage method, object movement is recorded.

### **Alarm**

When alarm input is enabled and trigger recording is selected as linkage method, the video is recorded after receiving alarm signal from external alarm input device.

### **Motion | Alarm**

Video is recorded when motion is detected or alarm signal is received from the external alarm input device.

### **Motion & Alarm**

Video is recorded only when motion is detected and alarm signal is received from the external alarm input device.

### **Event**

The video is recorded when configured event is detected.

5. Set schedule for the selected record type. Refer to **Set Arming Schedule** for the setting operation.
6. Click **Advanced** to set the advanced settings.

### **Overwrite**

Enable **Overwrite** to overwrite the video records when the storage space is full. Otherwise the camera cannot record new videos.

### **Pre-record**

The time period you set to record before the scheduled time.

### **Post-record**

The time period you set to stop recording after the scheduled time.

### **Stream Type**

Select the stream type for recording.

---

### **Note**



When you select the stream type with higher bitrate, the actual time of the pre-record and post-record may be less than the set value.

---

7. Click **Save**.

## 8.2.2 Record Manually




### Steps

1. Go to **Configuration** → **Local**.
2. Set the **Record File Size** and saving path to for recorded files.
3. Click **Save**.
4. Click  in the live view interface to start recording. Click  to stop recording.

## 8.2.3 Playback and Download Video

You can search, playback and download the videos stored in the local storage or network storage.

### Steps


1. Click **Playback**.
2. Select channel No.
3. Set search condition and click **Search**.  
The matched video files showed on the timing bar.
4. Click  to play the video files.
  - Click  to clip video files.
  - Click  to play video files in full screen. Press **ESC** to exit full screen.

---

### Note

Go to **Configuration** → **Local**, click **Save clips to** to change the saving path of clipped video files.

---

5. Click  on the playback interface to download files.
  - 1) Set search condition and click **Search**.
  - 2) Select the video files and then click **Download**.

---

### Note

Go to **Configuration** → **Local**, click **Save downloaded files to** to change the saving path of downloaded video files.

---

## 8.3 Capture Configuration

The device can capture the pictures manually or automatically and save them in configured saving

path. You can view and download the snapshots.

### 8.3.1 Capture Automatically

This function can capture pictures automatically during configured time periods.

#### Before You Start

If event-triggered capture is required, you should configure related linkage methods in event settings. Refer to [Event and Alarm](#) for event settings.

#### Steps

1. Go to **Configuration** → **Storage** → **Schedule Settings** → **Capture** → **Capture Parameters**.
2. Set the capture type.

##### Timing

Capture a picture at the configured time interval.

##### Event-Triggered

Capture a picture when an event is triggered.

3. Set the **Format**, **Resolution**, **Quality**, **Interval**, and **Capture Number**.
4. Refer to [Set Arming Schedule](#) for configuring schedule time.
5. Click **Save**.

### 8.3.2 Capture Manually

#### Steps


1. Go to **Configuration** → **Local**.
2. Set the **Image Format** and saving path to for snapshots.

##### JPEG

The picture size of this format is comparatively small, which is better for network transmission.

##### BMP

The picture is compressed with good quality.

3. Click **Save**.
4. Click  near the live view or play back window to capture a picture manually.

### 8.3.3 View and Download Picture

You can search, view and download the pictures stored in the local storage or network storage.

#### Steps

1. Click **Picture**.
2. Select channel No.

3. Set search condition and click **Search**.

The matched pictures showed in the file list.

4. Select the pictures then click **Download** to download them.

---

### **Note**

Go to **Configuration** → **Local**, click **Save snapshots when playback** to change the saving path of pictures.

---

## Chapter 9 Network Settings

### 9.1 TCP/IP

TCP/IP settings must be properly configured before you operate the device over network. IPv4 and IPv6 are both supported. Both versions can be configured simultaneously without conflicting to each other.

Go to **Configuration** → **Basic Configuration** → **Network** → **TCP/IP** for parameter settings.

#### NIC Type

Select a NIC (Network Interface Card) type according to your network condition.

#### IPv4

Two IPv4 modes are available.

##### DHCP

The device automatically gets the IPv4 parameters from the network if you check **DHCP**. The device IP address is changed after enabling the function. You can use SADP to get the device IP address.

---

#### Note

The network that the device is connected to should support DHCP (Dynamic Host Configuration Protocol).

---

#### Manual

You can set the device IPv4 parameters manually. Input **IPv4 Address**, **IPv4 Subnet Mask**, and **IPv4 Default Gateway**, and click **Test** to see if the IP address is available.

#### IPv6

Three IPv6 modes are available.

##### Route Advertisement

The IPv6 address is generated by combining the route advertisement and the device Mac address.

---

#### Note

Route advertisement mode requires the support from the router that the device is connected to.

---

#### DHCP

The IPv6 address is assigned by the server, router or gateway.

#### Manual



Input **IPv6 Address**, **IPv6 Subnet**, **IPv6 Default Gateway**. Consult the network administrator for required information.

### MTU

It stands for maximum transmission unit. It is the size of the largest protocol data unit that can be communicated in a single network layer transaction.

The valid value range of MTU is 1280 to 1500.

### DNS

It stands for domain name server. It is required if you need to visit the device with domain name. And it is also required for some applications (e.g., sending email). Set **Preferred DNS Server** and **Alternate DNS server** properly if needed.

## 9.1.1 Multicast Discovery

Check the **Enable Multicast Discovery**, and then the online network camera can be automatically detected by client software via private multicast protocol in the LAN.

## 9.2 Port

The device port can be modified when the device cannot access the network due to port conflicts.

---

### Caution

Do not modify the default port parameters at will, otherwise the device may be inaccessible.

---

Go to **Configuration** → **Network** → **Basic Settings** → **Port** for port settings.

### HTTP Port

It refers to the port through which the browser accesses the device. For example, when the **HTTP Port** is modified to 81, you need to enter **http://192.168.1.64:81** in the browser for login.

### RTSP Port

It refers to the port of real-time streaming protocol.

### HTTPS Port

It refers to the port through which the browser accesses the device with certificate. Certificate verification is required to ensure the secure access.

### Server Port

It refers to the port through which the client adds the device.

### WebSocket Port

TCP-based full-duplex communication protocol port for plug-in free preview.

### WebSockets Port

TCP-based full-duplex communication protocol port for plug-in free preview. Certificate

verification is required to ensure the secure access.

---

### Note

- WebSocket Port and WebSockets Port are only supported by certain models.
  - For device models that support that function, go to **Configuration** → **Network** → **Advanced Settings** → **Network Service** to enable it.
- 

## 9.3 Port Mapping

By setting port mapping, you can access devices through the specified port.

### Before You Start

When the ports in the device are the same as those of other devices in the network, refer to [Port](#) to modify the device ports.

### Steps

1. Go to **Configuration** → **Network** → **Basic Settings** → **NAT**.
2. Select the port mapping mode.

**Auto Port Mapping**      Refer to [Set Auto Port Mapping](#) for detailed information.

**Manual Port Mapping**      Refer to [Set Manual Port Mapping](#) for detailed information.

3. Click **Save**.

### 9.3.1 Set Auto Port Mapping

#### Steps

1. Check **Enable UPnP™**, and choose a friendly name for the camera, or you can use the default name.
2. Select the port mapping mode to **Auto**.
3. Click **Save**.

---

### Note

UPnP™ function on the router should be enabled at the same time.

---

### 9.3.2 Set Manual Port Mapping

#### Steps

1. Check **Enable UPnP™**, and choose a friendly name for the device, or you can use the default name.

2. Select the port mapping mode to **Manual**, and set the external port to be the same as the internal port.
3. Click **Save**.

**What to do next**

Go to the router port mapping settings interface and set the port number and IP address to be the same as those on the device. For more information, refer to the router user manual.

**9.3.3 Set Port Mapping on Router**

The following settings are for a certain router. The settings vary depending on different models of routers.

**Steps**

1. Select the **WAN Connection Type**.
2. Set the **IP Address**, **Subnet Mask** and other network parameters of the router.
3. Go to **Forwarding** → **Virtual Servers**, and input the **Port Number** and **IP Address**.
4. Click **Save**.

**Example**

When the cameras are connected to the same router, you can configure the ports of a camera as 80, 8000, and 554 with IP address 192.168.1.23, and the ports of another camera as 81, 8001, 555, 8201 with IP 192.168.1.24.

**108M Wireless Router**  
Model No.: TL-WR641G / TL-WR642G

- Status
- Quick Setup
- Basic Settings ---
- + Network
- + Wireless
- Advanced Settings ---
- + DHCP
- Forwarding
  - Virtual Servers
  - Port Triggering
  - DMZ
  - UPnP
- + Security
  - Static Routing
  - Dynamic DNS
- Maintenance ---
- + System Tools

**Virtual Servers**

ID	Service Port	IP Address	Protocol	Enable
1	80	192.168.10.23	ALL	<input checked="" type="checkbox"/>
2	8000	192.168.10.23	ALL	<input checked="" type="checkbox"/>
3	554	192.168.10.23	ALL	<input checked="" type="checkbox"/>
4	8200	192.168.10.23	ALL	<input checked="" type="checkbox"/>
5	81	192.168.10.24	ALL	<input checked="" type="checkbox"/>
6	8001	192.168.10.24	ALL	<input checked="" type="checkbox"/>
7	555	192.168.10.24	ALL	<input checked="" type="checkbox"/>
8	8201	192.168.10.24	ALL	<input checked="" type="checkbox"/>

Common Service Port: DNS(53) Copy to ID 1

Previous Next Clear All Save

**Figure 9-1 Port Mapping on Router**

### Note

The port of the network camera cannot conflict with other ports. For example, some web management port of the router is 80. Change the camera port if it is the same as the management port.

---

## 9.4 Multicast

Multicast is group communication where data transmission is addressed to a group of destination devices simultaneously.

Go to **Configuration** → **Network** → **Basic Settings** → **Multicast** for the multicast settings.

For a device with more than one channel, multicast can be set independently for each channel.

### IP Address

It stands for the address of multicast host.

### Stream Type

The stream type as the multicast source.

### Video Port

The video port of the selected stream.

### Audio Port

The audio port of the selected stream.

## 9.5 SNMP

You can set the SNMP network management protocol to get the alarm event and exception messages in network transmission.

### Before You Start

Before setting the SNMP, you should download the SNMP software and manage to receive the device information via SNMP port.

### Steps

1. Go to the settings page: **Configuration** → **Network** → **Advanced Settings** → **SNMP**.
2. Check **Enable SNMPv1**, **Enable SNMP v2c** or **Enable SNMPv3**.

---

### Note

The SNMP version you select should be the same as that of the SNMP software.

And you also need to use the different version according to the security level required. SNMP v1 is not secure and SNMP v2 requires password for access. And SNMP v3 provides encryption and if you use the third version, HTTPS protocol must be enabled.

---

3. Configure the SNMP settings.
4. Click **Save**.

## 9.6 Access to Device via Domain Name

You can use the Dynamic DNS (DDNS) for network access. The dynamic IP address of the device can be mapped to a domain name resolution server to realize the network access via domain name.

### Before You Start

Registration on the DDNS server is required before configuring the DDNS settings of the device.

### Steps

1. Refer to **TCP/IP** to set DNS parameters.
2. Go to the DDNS settings page: **Configuration** → **Network** → **Basic Settings** → **DDNS**.
3. Check **Enable DDNS** and select **DDNS type**.

#### DynDNS

Dynamic DNS server is used for domain name resolution.

#### NO-IP

NO-IP server is used for domain name resolution.

4. Input the domain name information, and click **Save**.
5. Check the device ports and complete port mapping. Refer to **Port** to check the device port , and refer to **Port Mapping** for port mapping settings.
6. Access the device.

**By Browsers**                      Enter the domain name in the browser address bar to access the device.

**By Client Software**            Add domain name to the client software. Refer to the client manual for specific adding methods.

## 9.7 Access to Device via PPPoE Dial Up Connection

This device supports the PPPoE auto dial-up function. The device gets a public IP address by ADSL dial-up after the device is connected to a modem. You need to configure the PPPoE parameters of the device.

### Steps

1. Go to **Configuration** → **Network** → **Basic Settings** → **PPPoE**.
2. Check **Enable PPPoE**.
3. Set the PPPoE parameters.

#### Dynamic IP

After successful dial-up, the dynamic IP address of the WAN is displayed.

### User Name

User name for dial-up network access.

### Password

Password for dial-up network access.

### Confirm

Input your dial-up password again.

4. Click **Save**.

5. Access the device.

**By Browsers** Enter the WAN dynamic IP address in the browser address bar to access the device.

**By Client Software** Add the WAN dynamic IP address to the client software. Refer to the client manual for details.



The obtained IP address is dynamically assigned via PPPoE, so the IP address always changes after rebooting the camera. To solve the inconvenience of the dynamic IP, you need to get a domain name from the DDNS provider (e.g. DynDns.com). Refer to [\*\*Access to Device via Domain Name\*\*](#) for detail information.

---

## 9.8 Enable Hik-Connect Service on Camera

Hik-Connect service should be enabled on your camera before using the service. You can enable the service through SADP software or Web browser.

### 9.8.1 Enable Hik-Connect Service via Web Browser

Follow the following steps to enable Hik-Connect Service via Web Browser.

#### Before You Start

You need to activate the camera before enabling the service.

#### Steps

1. Access the camera via web browser.
2. Enter platform access configuration interface. **Configuration** → **Network** → **Advanced Settings** → **Platform Access**
3. Select Hik-Connect as the **Platform Access Mode**.
4. Check **Enable**.
5. Click and read "Terms of Service" and "Privacy Policy" in pop-up window.

6. Create a verification code or change the old verification code for the camera.

---

### **Note**

The verification code is required when you add the camera to Hik-Connect service.

---

7. Save the settings.

## 9.8.2 Enable Hik-Connect Service via SADP Software

This part introduce how to enable Hik-Connect service via SADP software of an activated camera.

### Steps

1. Run SADP software.
2. Select a camera and enter **Modify Network Parameters** page.
3. Check **Enable Hik-Connect**.
4. Create a verification code or change the old verification code.

---

### **Note**

The verification code is required when you add the camera to Hik-Connect service.

---

5. Click and read "Terms of Service" and "Privacy Policy".
6. Confirm the settings.

## 9.8.3 Access Camera via Hik-Connect

Hik-Connect is an application for mobile devices. Using the App, you can view live image, receive alarm notification and so on.

### Before You Start

Connect the camera to network with network cables.

### Steps

1. Get and install Hik-Connect application by the following ways.

Visit <https://appstore.hikvision.com> to download the application according to your mobile phone system. Visit the official site of our company. Then go to **Support** → **Hikvision App Store**. Scan the QR code below to download the application.



## Note

If errors like "Unknown app" occur during the installation, solve the problem in two ways. Visit <https://appstore.hikvision.com/static/help/index.html> to refer to the troubleshooting. Visit <https://appstore.hikvision.com/>, and click **Installation Help** at the upper right corner of the interface to refer to the troubleshooting.

---

2. Start the application and register for a Hik-Connect user account.
3. Log in after registration.
4. In the app, tap "+" on the upper-right corner and then scan the QR code of the camera to add the camera. You can find the QR code on the camera or on the cover of the Quick Start Guide of the camera in the package.
5. Follow the prompts to set the network connection and add the camera to your Hik-Connect account.

For detailed information, refer to the user manual of the Hik-Connect app.

## 9.9 Set ISUP

When the device is registered on ISUP platform (formerly called Ehome), you can visit and manage the device, transmit data, and forward alarm information over public network.

### Steps

1. Go to **Configuration** → **Network** → **Advanced Settings** → **Platform Access**.
2. Select **ISUP** as the platform access mode.
3. Select **Enable**.
4. Select a protocol version and input related parameters.
5. Click **Save**.

Register status turns to **Online** when the function is correctly set.

## 9.10 Set Open Network Video Interface

If you need to access the device through Open Network Video Interface protocol, you can configure the user settings to enhance the network security.

### Steps

1. Go to **Configuration** → **Network** → **Advanced Settings** → **Integration Protocol**.
2. Check **Enable Open Network Video Interface**.
3. Click **Add** to configure the Open Network Video Interface user.

**Delete** Delete the selected Open Network Video Interface user.

**Modify** Modify the selected Open Network Video Interface user.



4. Click **Save**.
5. Optional: Repeat the steps above to add more Open Network Video Interface users.

### 9.11 Set Alarm Server

The device can send alarms to destination IP address or host name through HTTP, HTTPS, or ISUP protocol. The destination IP address or host name should support HTTP, HTTPS, or ISUP data transmission.

#### Steps

1. Go to **Configuration** → **Network** → **Advanced Settings** → **Alarm Server**.
2. Enter **Destination IP or Host Name**, **URL**, and **Port**.
3. Select **Protocol**.

---

#### **Note**

HTTP, HTTPS, and ISUP are selectable. It is recommended to use HTTPS, as it encrypts the data transmission during communication.

---

4. Click **Test** to check if the IP or host is available.
5. Click **Save**.

### 9.12 Set Network Service

You can control the ON/OFF status of certain protocol as desired.

#### Steps

---

#### **Note**

This function varies according to different models.

---

1. Go to **Configuration** → **Network** → **Advanced Settings** → **Network Service**.
2. Set network service.

#### **WebSocket & WebSockets**

WebSocket or WebSockets protocol should be enabled if you use Google Chrome 57 and its above version or Mozilla Firefox 52 and its above version to visit the device. Otherwise, live view, image capture, and digital zoom function cannot be used.

If the device uses HTTP, enable WebSocket.

If the device uses HTTPS, enable WebSockets.

3. Click **Save**.

## Chapter 10 System and Security

It introduces system maintenance, system settings and security management, and explains how to configure relevant parameters.

### 10.1 View Device Information

You can view device information, such as Device No., Model, Serial No. and Firmware Version. Enter **Configuration** → **System** → **System Settings** → **Basic Information** to view the device information.

### 10.2 Search and Manage Log

Log helps locate and troubleshoot problems.

#### Steps

1. Go to **Configuration** → **System** → **Maintenance** → **Log**.
2. Set search conditions **Major Type**, **Minor Type**, **Start Time**, and **End Time**.
3. Click **Search**.  
The matched log files will be displayed on the log list.
4. Optional: Click **Export** to save the log files in your computer.

### 10.3 Import and Export Configuration File

It helps speed up batch configuration on other devices with the same parameters.

#### Steps

1. Export configuration file.
  - 1) Go to **Configuration** → **System** → **Maintenance** → **Upgrade & Maintenance**.
  - 2) Click **Device Parameters** and input the encryption password to export the current configuration file.
  - 3) Set the saving path to save the configuration file in local computer.
2. Import configuration file.
  - 1) Access the device that needs to be configured via web browser.
  - 2) Click **Browse** to select the saved configuration file.
  - 3) Input the encryption password you have set when exporting the configuration file.
  - 4) Click **Import**.

## 10.4 Export Diagnose Information

Diagnose information includes running log, system information, hardware information. Go to **Configuration** → **System** → **Maintenance** → **Upgrade & Maintenance**, and click **Diagnose Information** to export diagnose information of the device.

## 10.5 Reboot

You can reboot the device via browser. Go to **Configuration** → **System** → **Maintenance** → **Upgrade & Maintenance**, and click **Reboot**.

## 10.6 Restore and Default

Restore and Default helps restore the device parameters to the default settings.

### Steps

1. Go to **Configuration** → **System** → **Maintenance** → **Upgrade & Maintenance**.
2. Click **Restore** or **Default** according to your needs.

<b>Restore</b>	Reset device parameters, except user information, IP parameters and video format to the default settings.
----------------	---

<b>Default</b>	Reset all the parameters to the factory default.
----------------	--

---

### Note

Be careful when using this function. After resetting to the factory default, all the parameters are reset to the default settings.

---

## 10.7 Upgrade

### Before You Start

You need to obtain the correct upgrade package.

---

### Caution

DO NOT disconnect power during the process, and the device reboots automatically after upgrade.

---

### Steps

1. Go to **Configuration** → **System** → **Maintenance** → **Upgrade & Maintenance**.
2. Choose one method to upgrade.

**Firmware**                      Locate the exact path of the upgrade file.

**Firmware Directory**        Locate the directory which the upgrade file belongs to.

3. Click **Browse** to select the upgrade file.
4. Click **Upgrade**.

## 10.8 View Open Source Software License

Go to **Configuration** → **System** → **System Settings** → **About Device**, and click **View Licenses**.

## 10.9 Time and Date

You can configure time and date of the device by configuring time zone, time synchronization and Daylight Saving Time (DST).

### 10.9.1 Synchronize Time Manually

#### Steps

1. Go to **Configuration** → **System** → **System Settings** → **Time Settings**.
  2. Select **Time Zone**.
  3. Click **Manual Time Sync..**
  4. Choose one time synchronization method.
    - Select **Set Time**, and manually input or select date and time from the pop-up calendar.
- Check **Sync. with computer time** to synchronize the time of the device with that of the local PC.
5. Click **Save**.

### 10.9.2 Set NTP Server

You can use NTP server when accurate and reliable time source is required.

#### Before You Start

Set up a NTP server or obtain NTP server information.

#### Steps

1. Go to **Configuration** → **System** → **System Settings** → **Time Settings**.
2. Select **Time Zone**.
3. Click **NTP**.
4. Set **Server Address**, **NTP Port** and **Interval**.

### Note

Server Address is NTP server IP address.

---

5. Click **Test** to test server connection.
6. Click **Save**.

### 10.9.3 Set DST

If the region where the device is located adopts Daylight Saving Time (DST), you can set this function.

#### Steps

1. Go to **Configuration** → **System** → **System Settings** → **DST**.
2. Check **Enable DST**.
3. Select **Start Time**, **End Time** and **DST Bias**.
4. Click **Save**.

### 10.10 Set RS-232

RS-232 can be used to debug device or access peripheral device. RS-232 can realize communication between the device and computer or terminal when the communication distance is short.

#### Before You Start

Connect the device to computer or terminal with RS-232 cable.

#### Steps

1. Go to **Configuration** → **System** → **System Settings** → **RS-232**.
2. Set RS-232 parameters to match the device with computer or terminal.
3. Click **Save**.

### 10.11 Set RS-485

RS-485 is used to connect the device to external device. You can use RS-485 to transmit the data between the device and the computer or terminal when the communication distance is too long.

#### Before You Start

Connect the device and computer or terminal with RS-485 cable.

#### Steps

1. Go to **Configuration** → **System** → **System Settings** → **RS-485**.
2. Set the RS-485 parameters.

---

### Note

You should keep the parameters of the device and the computer or terminal all the same.

---

3. Click **Save**.

## 10.12 Security

You can improve system security by setting security parameters.

### 10.12.1 Authentication

You can improve network access security by setting RTSP and WEB authentication.

Go to **Configuration** → **System** → **Security** → **Authentication** to choose authentication protocol and method according to your needs.

---

### Note

Refer to the specific content of protocol to view authentication requirements.

---

### 10.12.2 Security Audit Log

The security audit logs refer to the security operation logs. You can search and analyze the security log files of the device so as to find out the illegal intrusion and troubleshoot the security events. Security audit logs can be saved on device internal storage. The log will be saved every half hour after device booting. Due to limited storage space, you can also save the logs on a log server.

#### Search Security Audit Logs

You can search and analyze the security log files of the device so as to find out the illegal intrusion and troubleshoot the security events.

#### Steps

---

### Note

This function is only supported by certain camera models.

---

1. Go to **Configuration** → **System** → **Maintenance** → **Security Audit Log**.
2. Select log types, **Start Time**, and **End Time**.
3. Click **Search**.

The log files that match the search conditions will be displayed on the Log List.

4. Optional: Click **Export** to save the log files to your computer.

### Set Log Server

The log server should support syslog (RFC 3164) over TLS.

#### Steps

1. Check **Enable Log Upload Server**.
2. Input **Log Server IP** and **Log Server Port**.
3. Click **Test** to test the settings.
4. Install client certificate.
  - 1) Click **Create** to create the certificate request. Fill in the required information in the pop-up window.
  - 2) Click **Download** to download the certificate request and submit it to the trusted certificate authority for signature.
  - 3) Install the signed certificate to the device.
5. Install the CA certificate to the device.

### 10.12.3 Set IP Address Filter

IP address filter is a tool for access control. You can enable the IP address filter to allow or forbid the visits from the certain IP addresses.

IP address refers to IPv4.

#### Steps

1. Go to **Configuration** → **System** → **Security** → **IP Address Filter**.
2. Check **Enable IP Address Filter**.
3. Select the type of IP address filter.

**Forbidden** IP addresses in the list cannot access the device.

**Allowed** Only IP addresses in the list can access the device.

4. Edit the IP address filter list.

**Add** Add a new IP address to the list.

**Modify** Modify the selected IP address in the list.

**Delete** Delete the selected IP address in the list.

5. Click **Save**.

### 10.12.4 Set HTTPS

HTTPS is a network protocol that enables encrypted transmission and identity authentication,

which improves the security of remote access.

### Steps

1. Go to **Configuration** → **Network** → **Advanced Settings** → **HTTPS**.
2. Check **Enable**.
3. Click **Delete** to recreate and install certificate.

**Create and install self-signed certificate**      Refer to [Create and Install Self-signed Certificate](#)

**Create certificate request and install certificate**      Refer to [Install Authorized Certificate](#)

4. Click **Save**.

### Create and Install Self-signed Certificate

#### Steps

1. Check **Create Self-signed Certificate**.
2. Click **Create**.
3. Follow the prompt to enter **Country/Region, Hostname/IP, Validity** and other parameters.
4. Click **OK**.

#### Result

The device will install the self-signed certificate by default.

### Install Authorized Certificate

If the demand for external access security is high, you can create and install authorized certificate via HTTPS protocol to ensure the data transmission security.

#### Steps

1. Select **Create certificate request first and continue the installation**.
2. Click **Create**.
3. Follow the prompt to input **Country/Region, Hostname/IP, Validity** and other parameters.
4. Click **Download** to download the certificate request and submit it to the trusted authority for signature.
5. Import certificate to the device.
  - Select **Signed certificate is available, start the installation directly**. Click **Browse** and **Install** to import the certificate to the device.
  - Select **Create the certificate request first and continue the installation**. Click **Browse** and **Install** to import the certificate to the device.
6. Click **Save**.



## 10.12.5 Set QoS

QoS (Quality of Service) can help improve the network delay and network congestion by setting the priority of data sending.

---

### Note

QoS needs support from network device such as router and switch.

---

### Steps

1. Go to **Configuration** → **Network** → **Advanced Configuration** → **QoS**.
  2. Set **Video/Audio DSCP**, **Alarm DSCP** and **Management DSCP**.
- 

### Note

Network can identify the priority of data transmission. The bigger the DSCP value is, the higher the priority is. You need to set the same value in router while configuration.

---

3. Click **Save**.

## 10.12.6 Set IEEE 802.1X

IEEE 802.1x is a port-based network access control. It enhances the security level of the LAN/WLAN. When devices connect to the network with IEEE 802.1x standard, the authentication is needed.

Go to **Configuration** → **Network** → **Advanced Settings** → **802.1X**, and enable the function. Set **Protocol** and **EAPOL Version** according to router information.

### Protocol

EAP-TLS and EAP-MD5 are selectable

#### EAP-MD5

If you use EAP-MD5, the authentication server must be configured. Register a user name and password for 802.1X in the server in advance. Input the user name and password for authentication.

#### EAP-TLS

If you use EAP-TLS, input Identify, Private Key Password, and upload CA Certificate, User Certificate and Private Key.

### EAPOL Version

The EAPOL version must be identical with that of the router or the switch.

## 10.13 User and Account

### 10.13.1 Set User Account and Permission

The administrator can add, modify, or delete other accounts, and grant different permission to different user levels.

---

#### **Caution**

To increase security of using the device on the network, please change the password of your account regularly. Changing the password every 3 months is recommended. If the device is used in high-risk environment, it is recommended that the password should be changed every month or week.

---

#### **Steps**

1. Go to **Configuration** → **System** → **User Management** → **User Management**.
2. Click **Add**. Enter **User Name**, select **Level**, and enter **Password**. Assign remote permission to users based on needs.

#### **Administrator**

The administrator has the authority to all operations and can add users and operators and assign permission.

#### **User**

Users can be assigned permission of viewing live video, setting PTZ parameters, and changing their own passwords, but no permission for other operations.

#### **Operator**

Operators can be assigned all permission except for operations on the administrator and creating accounts.

**Modify**                      Select a user and click **Modify** to change the password and permission.

**Delete**                      Select a user and click **Delete**.

---

#### **Note**

The administrator can add up to 31 user accounts.

---

3. Click **OK**.

## Chapter 11 Appendix

### 11.1 Common Material Emissivity Reference

Material	Emissivity
Human Skin	0.98
Printed Curcuit Board	0.91
Concrete	0.95
Ceramic	0.92
Rubber	0.95
Paint	0.93
Wood	0.85
Pitch	0.96
Brick	0.95
Sand	0.90
Soil	0.92
Cloth	0.98
Hard Paperboard	0.90
White Paper	0.90
Water	0.96

### 11.2 Device Command

Scan the following QR code to get device common serial port commands.

Note that the command list contains the commonly used serial port commands for Hikvision thermal cameras.



## 11.3 Device Communication Matrix

Scan the following QR code to get device communication matrix.

Note that the matrix contains all communication ports of Hikvision thermal cameras.





See Far, Go Further