

## DS-6900UDI Series Decoder

### Features and Functions



#### Professional and Reliable

- DS-6901UDI provides HDMI, VGA, and BNC output interfaces.
- DS-6904UDI, DS-6908UDI, DS-6910UDI, DS-6912UDI, DS-6916UDI provide HDMI (adaptable to DVI-D) and BNC output interfaces.
- Up to 4K (3840 × 2160@30Hz) via HDMI output interfaces (only for even interface).
- Up to 8-ch decoding at 24 MP resolution (DS-6916UDI).
- H.265+/H.265, H.264+/H.264, Hik264, MPEG4 and MJPEG video compression.
- PS, RTP, TS, ES, HIK encapsulation formats.
- Three encoding levels: baseline, main, and high-profile.
- G.722, G711A, G726, G711U, MPEG2-L2, and AAC audio compression.
- Two decoding modes: active decoding and passive decoding.
- Remote video files' decoding output.
- Supports two-way audio via client software.
- Supports window opening and window roaming.
- Supports multi-screen control with PC installed with RSC server.
- Gets stream and decodes via URL and RTSP from encoding devices.
- Displays the decoded video stream on the video wall by directly linking cameras or by stream media forwarding.
- You can configure what the video wall shows when decoding ends and streaming fails via the Web browser and client software.
- Configurable LED width and height parameters when the LED is connected.
- Regular and irregular virtual screen configurable to display multiple signal sources and get rid of the restriction of physical screen.
- Accessible by 2.4 MP DeepinView camera.
- Accessible by thermal network camera and you can view the temperature measurement, dynamic fire source detection, ship detection and VCA information in live view and playback.
- You can enable or disable the smart information for the thermal network camera.
- Remote PTZ control via transparent channel.
- Two-way audio.
- Port aggregation technology (Ethernet Channel).



DS-6901/6904/6908UDI

## Specifications

| Model                    |                     | DS-6901UDI   | DS-6904UDI   | DS-6908UDI  |
|--------------------------|---------------------|--|--|---|
| Video/Audio input        | VGA and DVI-I input | /  | WSXGA: 1680×1050/60Hz<br>WXGA: 1440×900/60Hz<br>WXGA: 1280×800/60Hz, 1366×768/60Hz,<br>1080p: 1920 × 1080@50/60Hz<br>UXGA: 1600 × 1200@60Hz<br>XVGA: 1280 × 960@60Hz<br>720p: 1280 × 720@50Hz/60Hz<br>SXGA: 1280 × 1024@60Hz<br>XGA: 1024 × 768@60Hz |   |
| Video/Audio output       | HDMI output         | 1-ch   | 4-ch   | 8-ch  |
|                          |                     | 4K: 3840 × 2160@30Hz ( for odd interface only)<br>1080p: 1920 × 1080@50/60Hz<br>WSXGA: 1680×1050/60Hz<br>UXGA: 1600 × 1200@60Hz (for odd interface only)<br>720p: 1280 × 720@50Hz/60Hz<br>SXGA: 1280 × 1024@60Hz<br>XGA: 1024 × 768@60Hz |  |   |
|                          | VGA output          | 1-ch   | /  | /   |
|                          |                     | 1080p: 1920 × 1080@50/60Hz<br>WSXGA: 1680×1050/60Hz<br>SXGA: 1280 × 1024@60Hz<br>720p: 1280 × 720@50Hz/60Hz<br>XGA: 1024 × 768@60Hz  |  |   |
| BNC output               | 1-ch                | 2-ch, 1 DB 15  | 4-ch, 1 DB 15  |   |
| Audio/<br>Video decoding | Decoding resolution | Up to 12MP   |  |   |
|                          | Decoding channel    | 16-ch  | 32-ch  | 64-ch   |
|                          | Decoding capability | 24MP@30fps: 1-ch<br>12MP@20fps: 2-ch<br>8MP@30fps: 4-ch<br>5MP@30fps: 6-ch<br>3MP@30fps: 10-ch<br>1080p@30fps: 16-ch   | 24MP@30fps: 2-ch<br>12MP@20fps:4-ch<br>8MP@30fps: 8-ch<br>5MP@30fps: 12-ch<br>3MP@30fps: 20-ch<br>1080p@30fps: 32-ch   | 24MP@30fps: 6-ch<br>12MP@20fps:8-ch<br>8MP@30fps: 16-ch<br>5MP@30fps: 24-ch<br>3MP@30fps: 40-ch<br>1080p@30fps: 64-ch |
|                          | Split screen        | 1/4/6/8/9/12/16  | 1/4/6/8/9/12/16/25   | 1/4/6/8/9/12/16/25/36   |
| External interface       | Network interface   | 1, 10/100/1000 Mbps self-adaptive  | 2, 10/100/1000 Mbps self-adaptive management network interface<br>2, 10/100/1000 Mbps self-adaptive  |   |

|         |                        |  |  |               |
|---------|------------------------|--|--|---------------|
|         |                        | Ethernet interface                               | Ethernet interface<br>16, 10M/100Mbps self-adaptive Ethernet interface |               |
|         | Serial interface       | 1 RS-232 (RJ45), 1 RS-485                        |  |               |
|         | Two-way audio in       | 1-ch, 3.5 mm connector (2.0 Vp-p, 1 K $\Omega$ ) |  |               |
|         | Two-way audio out      | 1-ch, 3.5 mm connector (2.0 Vp-p, 1 K $\Omega$ ) |  |               |
|         | Audio output           | 1-ch   | 4-ch, 1 DB 15  | 8-ch, 1 DB 15 |
|         | Alarm in               | 8-ch   |  |               |
|         | Alarm out              | 8-ch   |  |               |
| General | Power supply           | 12 VDC   | 220 VAC  |               |
|         | Power consumption      | $\leq 15$ W                                      | $\leq 70$ W  |               |
|         | Working temperature    | -10 °C to +55 °C (14 °F to 131 °F)               |  |               |
|         | Working humidity       | 10% to 90%                                       |  |               |
|         | Dimensions (W × D × H) | 220 × 148 × 45 mm (8.66 × 5.83 × 1.77 inch)      | 440 × 311 × 44.5 mm (17.32 × 12.24 × 1.75 inch)                        |               |
|         | Weight                 | $\leq 1.2$ kg (2.65 lb)                          | $\leq 5.2$ kg (11.4 lb)  |               |

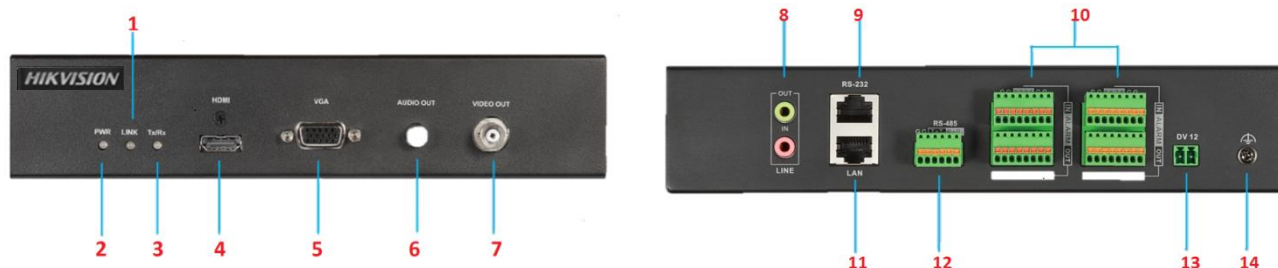
DS-6910/6912/6916UDI

| Model                    |                     | DS-6910UDI   | DS-6912UDI  | DS-6916UDI  |
|--------------------------|---------------------|--|---|---|
| Video/Audio input        | VGA and DVI-I input | WSXGA: 1680×1050/60Hz<br>WXGA: 1440×900/60Hz<br>WXGA: 1280×800/60Hz, 1366×768/60Hz,<br>1080p: 1920 × 1080@50/60Hz<br>UXGA: 1600 × 1200@60Hz<br>XVGA: 1280 × 960@60Hz<br>720p: 1280 × 720@50Hz/60Hz<br>SXGA: 1280 × 1024@60Hz<br>XGA: 1024 × 768@60Hz |   |   |
|                          | HDMI output         | 10-ch  | 12-ch   | 16-ch   |
| Video/Audio output       | HDMI output         | 4K: 3840 × 2160@30Hz ( for odd interface only)<br>1080p: 1920 × 1080@50/60Hz<br>WSXGA: 1680×1050/60Hz<br>UXGA: 1600 × 1200@60Hz (for odd interface only)<br>720p: 1280 × 720@50Hz/60Hz<br>SXGA: 1280 × 1024@60Hz<br>XGA: 1024 × 768@60Hz             |   |   |
|                          | BNC output          | 5-ch, 2 DB 15  | 6-ch, 2 DB 15   | 8-ch, 2 DB 15   |
| Audio/<br>Video decoding | Decoding resolution | Up to 12MP   |   |   |
|                          | Decoding channel    | 80-ch  | 96-ch   | 128-ch  |
|                          | Decoding capability | 24MP@30fps: 5-ch<br>12MP@20fps: 10-ch<br>8MP@30fps: 20-ch<br>5MP@30fps: 30-ch<br>3MP@30fps: 50-ch<br>1080p@30fps: 80-ch  | 24MP@30fps: 6-ch<br>12MP@20fps: 12-ch<br>8MP@30fps: 24-ch<br>5MP@30fps: 36-ch<br>3MP@30fps: 60-ch<br>1080p@30fps: 96-ch | 24MP@30fps: 8-ch<br>12MP@20fps: 16-ch<br>8MP@30fps: 32-ch<br>5MP@30fps: 48-ch<br>3MP@30fps: 80-ch<br>1080p@30fps/3 Mbps: 128-ch |
|                          | Split screen        | 1/4/6/8/9/12/16/25/36  |   |   |
| External interface       | Network interface   | 2, 10/100/1000 Mbps self-adaptive management network interface<br>2, 10/100/1000 Mbps self-adaptive Ethernet interface<br>16, 10M/100 Mbps self-adaptive Ethernet interface  |   |   |
|                          | Serial interface    | 1 RS-232 (RJ45), 1 RS-485  |   |   |
|                          | Two-way audio in    | 1-ch, 3.5 mm connector (2.0 Vp-p, 1 KΩ)  |   |   |
|                          | Two-way audio out   | 1-ch, 3.5 mm connector (2.0 Vp-p, 1 KΩ)  |   |   |
|                          | Audio output        | 10-ch, 2 DB 15   | 12-ch, 2DB 15   | 16-ch, 2 DB 15  |
| Alarm input              | 8                   |  |   |   |

|         |                        |   |
|---------|------------------------|---|
|         | Alarm out              | 8   |
| General | Power supply           | 100 to 240 VAC                                |
|         | Power consumption      | ≤ 108 W                                       |
|         | Working temperature    | -10 °C to +55 °C (14 °F to 131 °F)            |
|         | Working humidity       | 10% to 90%                                    |
|         | Dimensions (W × D × H) | 440 × 311 × 80 mm (17.32 × 12.24 × 3.15 inch) |
|         | Weight                 | ≤ 6.4 kg (14.11 lb)                           |

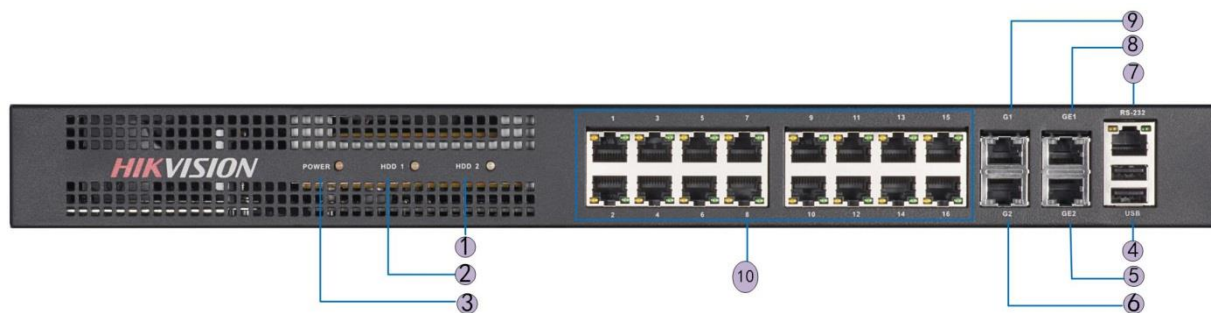
## Physical Interfaces

### DS-6901UDI Front Panel and Rear Panel



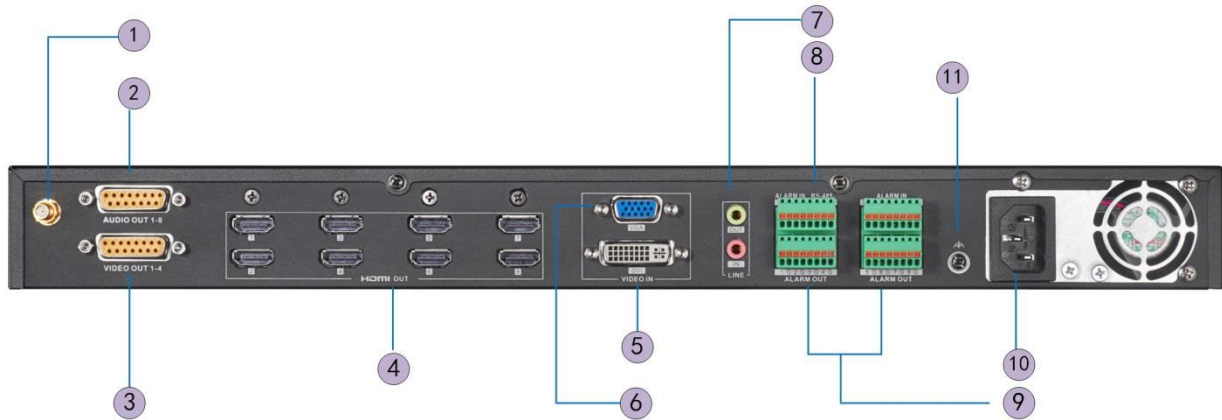
| Index | Description                                      | Index | Description                             |
|-------|--|-------|---|
| 1     | Network connection LED indicator                 | 8     | Line input/output                       |
| 2     | Power LED indicator                              | 9     | RS-232 interface                        |
| 3     | Data transmitting/receiving status LED indicator | 10    | Alarm input/output                      |
| 4     | HDMI video output                                | 11    | LAN 10/100/1000 Mbps Ethernet interface |
| 5     | VGA video output                                 | 12    | RS-485 interface                        |
| 6     | Audio out  | 13    | Power supply (12 VDC)                   |
| 7     | BNC video output                                 | 14    | GND (Ground)                            |

### DS-6904UDI/6908UDI Front Panel



| Index | Description                          | Index | Description                               |
|-------|--------------------------------------|-------|---|
| 1     | Power indicator                      | 6     | LAN 10/100/1000 Mbps Ethernet interface 2 |
| 2     | HDD 1 indicator (reserved)           | 7     | RS-232 interface                          |
| 3     | HDD 2 indicator (reserved)           | 8     | Local management network interface 1      |
| 4     | USB 2.0                              | 9     | LAN 10/100/1000 Mbps Ethernet interface 1 |
| 5     | Local management network interface 2 | 10    | LAN 10/100 Mbps Ethernet interface        |

## DS-6908UDI Rear Panel

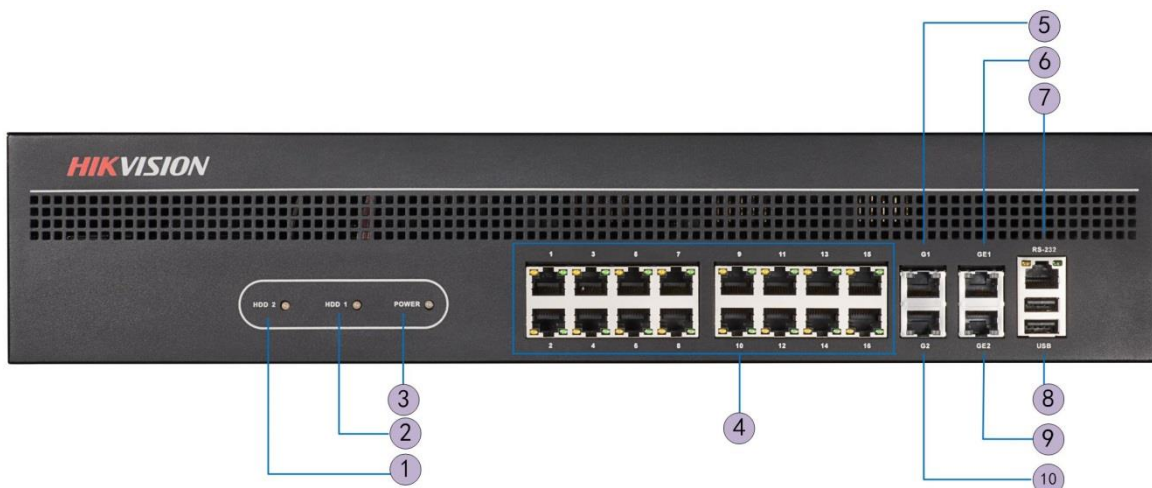


| Index | Description     | Index | Description        |
|-------|-----------------|-------|--------------------|
| 1     | Wi-Fi           | 7     | Line input/output  |
| 2     | Audio out       | 8     | RS-485 interface   |
| 3     | Video out       | 9     | Alarm input/output |
| 4     | HDMI video out  | 10    | Power              |
| 5     | DVI video input | 11    | GND                |
| 6     | VGA video input |       |                    |



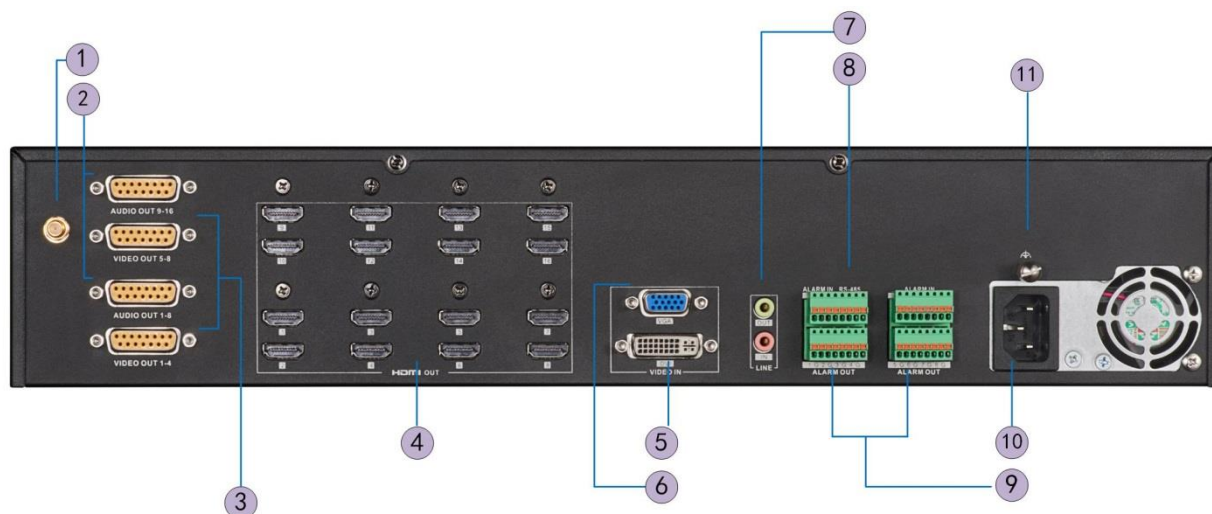
DS-6904UDI provides 4-ch HDMI output interfaces and other interfaces are the same with DS-6908UDI.

## DS-6910UDI/6912UDI Front Panel



| Index | Description                               | Index | Description                               |
|-------|---|-------|---|
| 1     | HDD 1 indicator (reserved)                | 6     | Local management network interface 1      |
| 2     | HDD 2 indicator (reserved)                | 7     | RS-232 interface                          |
| 3     | Power indicator                           | 8     | USB 2.0                                   |
| 4     | LAN 10/100Mbps Ethernet interface         | 9     | Local management network interface 2      |
| 5     | LAN 10/100/1000 Mbps Ethernet interface 1 | 10    | LAN 10/100/1000 Mbps Ethernet interface 2 |

## DS-6916UDI Rear Panel



| Index | Description       | Index | Description        |
|-------|-------------------|-------|--------------------|
| 1     | Wi-Fi             | 7     | Line input/output  |
| 2     | Audio out         | 8     | RS-485 interface   |
| 3     | Video out         | 9     | Alarm input/output |
| 4     | HDMI video output | 10    | Power              |
| 5     | DVI video input   | 11    | GND                |
| 6     | VGA video output  |       |                    |

Distributed by



### NOTE

DS-6910UDI provides 10 HDMI output interfaces, DS-6912UDI provides 12 HDMI output interfaces and other interfaces are the same with DS-6916UDI.

## HIKVISION®

### Headquarters

No.555 Qianmo Road, Binjiang District,  
Hangzhou 310051, China  
T +86-571-8807-5998  
overseasbusiness@hikvision.com

### Available Models

DS-6901UDI, DS-6904UDI, DS-6908UDI, DS-6910UDI, DS-6912UDI,  
DS-6916UDI

**Hikvision USA**  
T +1-909-895-0400  
sales.usa@hikvision.com

**Hikvision Australia**  
T +61-2-8599-4233  
salesau@hikvision.com

**Hikvision India**  
T +91-22-28469900  
sales@pramahikvision.com

**Hikvision Canada**  
T +1-866-200-6690  
sales.canada@hikvision.com

**Hikvision Thailand**  
T +662-275-9949  
sales.thailand@hikvision.com

**Hikvision Europe**  
T +31-23-5542770  
sales.eu@hikvision.com

**Hikvision Italy**  
T +39-0438-6902  
info.it@hikvision.com

**Hikvision Brazil**  
T +55 11 3318-0050  
Latam.support@hikvision.com

**Hikvision Turkey**  
T +90 [216]521 7070- 7074  
sales.tr@hikvision.com

**Hikvision Malaysia**  
T +601-7652-2413  
sales.my@hikvision.com

**Hikvision UK & Ireland**  
T +01628-902140  
sales.uk@hikvision.com

**Hikvision South Africa**  
Tel: +27 (10) 0351172  
sale.africa@hikvision.com

**Hikvision France**  
T +33(0)1-85-330-450  
info.fr@hikvision.com

**Hikvision Kazakhstan**  
T +7-727-9730667  
nikia.panfilov@hikvision.ru

**Hikvision Vietnam**  
T +84-974270888  
sales.vt@hikvision.com

**Hikvision UAE**  
T +971-4-4432090  
salesme@hikvision.com

**Hikvision Singapore**  
T +65-6684-4718  
sg@hikvision.com

**Hikvision Spain**  
T +34-91-737-16-55  
info.es@hikvision.com

**Hikvision Tashkent**  
T +99-87-1238-9438  
uzb@hikvision.ru

**Hikvision Hong Kong**  
T +852-2151-1761  
info.hk@hikvision.com

**Hikvision Russia**  
T +7-495-669-67-99  
saleru@hikvision.com

**Hikvision Korea**  
T +82-(0)31-731-8817  
sales.korea@hikvision.com

**Hikvision Poland**  
T +48-22-460-01-50  
info.pl@hikvision.com

**Hikvision Indonesia**  
T +62-21-2933759  
Sales.Indonesia@hikvision.com

**Hikvision Colombia**  
sales.colombia@hikvision.com