



DS-3WF01C-2N

Quick Start Guide

Quick Start Guide

COPYRIGHT ©2019 Hangzhou Hikvision Digital Technology Co., Ltd.

ALL RIGHTS RESERVED.

Any and all information, including, among others, wordings, pictures, graphs are the properties of Hangzhou Hikvision Digital Technology Co., Ltd. or its subsidiaries (hereinafter referred to be “Hikvision”). This user manual (hereinafter referred to be “the Manual”) cannot be reproduced, changed, translated, or distributed, partially or wholly, by any means, without the prior written permission of Hikvision. Unless otherwise stipulated, Hikvision does not make any warranties, guarantees or representations, express or implied, regarding to the Manual.

About this Manual

This Manual is applicable to DS-3WF01C-2N (Product Series).

The Manual includes instructions for using and managing the product. Pictures, charts, images and all other information hereinafter are for description and explanation only. The information contained in the Manual is subject to change, without notice, due to firmware updates or other reasons. Please find the latest version in the company website (<http://overseas.hikvision.com/en/>).

Please use this user manual under the guidance of professionals.

Trademarks Acknowledgement

HIKVISION and other Hikvision’s trademarks and logos are the properties of Hikvision in various jurisdictions. Other trademarks and logos mentioned below are the properties of their respective owners.

Legal Disclaimer

TO THE MAXIMUM EXTENT PERMITTED BY APPLICABLE LAW, THE PRODUCT DESCRIBED, WITH ITS HARDWARE, SOFTWARE AND FIRMWARE, IS PROVIDED “AS IS”, WITH ALL FAULTS AND ERRORS, AND HIKVISION MAKES NO WARRANTIES, EXPRESS OR IMPLIED, INCLUDING WITHOUT LIMITATION, MERCHANTABILITY, SATISFACTORY QUALITY, FITNESS FOR A PARTICULAR PURPOSE, AND NON-INFRINGEMENT OF THIRD PARTY. IN NO EVENT WILL HIKVISION, ITS DIRECTORS, OFFICERS, EMPLOYEES, OR AGENTS BE LIABLE TO YOU FOR ANY SPECIAL, CONSEQUENTIAL, INCIDENTAL, OR INDIRECT DAMAGES, INCLUDING, AMONG OTHERS, DAMAGES FOR LOSS OF BUSINESS PROFITS, BUSINESS INTERRUPTION, OR LOSS OF DATA OR DOCUMENTATION, IN CONNECTION WITH THE USE OF THIS PRODUCT, EVEN IF HIKVISION HAS BEEN ADVISED OF THE POSSIBILITY OF SUCH DAMAGES.

REGARDING TO THE PRODUCT WITH INTERNET ACCESS, THE USE OF PRODUCT SHALL BE WHOLLY AT YOUR OWN RISKS. HIKVISION SHALL NOT TAKE ANY RESPONSIBILITIES FOR ABNORMAL OPERATION, PRIVACY LEAKAGE OR OTHER DAMAGES RESULTING FROM CYBER ATTACK, HACKER ATTACK, VIRUS INSPECTION, OR OTHER INTERNET SECURITY RISKS; HOWEVER, HIKVISION WILL PROVIDE TIMELY TECHNICAL SUPPORT IF REQUIRED.

SURVEILLANCE LAWS VARY BY JURISDICTION. PLEASE CHECK ALL RELEVANT LAWS IN YOUR JURISDICTION BEFORE USING THIS PRODUCT IN ORDER TO ENSURE THAT YOUR USE CONFORMS THE APPLICABLE LAW. HIKVISION SHALL NOT BE LIABLE IN THE EVENT THAT THIS PRODUCT IS USED WITH ILLEGITIMATE PURPOSES.

IN THE EVENT OF ANY CONFLICTS BETWEEN THIS MANUAL AND THE APPLICABLE LAW, THE LATER PREVAILS.

Regulatory Information

FCC Information

Please take attention that changes or modification not expressly approved by the party responsible for compliance could void the user's authority to operate the equipment.


FCC compliance: This equipment has been tested and found to comply with the limits for a Class A digital device, pursuant to part 15 of the FCC Rules. These limits are designed to provide reasonable protection against harmful interference when the equipment is operated in a commercial environment. This equipment generates, uses, and can radiate radio frequency energy and, if not installed and used in accordance with the instruction manual, may cause harmful interference to radio communications. Operation of this equipment in a residential area is likely to cause harmful interference in which case the user will be required to correct the interference at his own expense.


FCC Conditions


This device complies with part 15 of the FCC Rules. Operation is subject to the following two conditions:

1. This device may not cause harmful interference.
2. This device must accept any interference received, including interference that may cause undesired operation.

EU Conformity Statement

 This product and - if applicable - the supplied accessories too are marked with "CE" and comply therefore with the applicable harmonized European standards listed under the EMC Directive 2014/30/EU, the LVD Directive 2014/35/EU, the RoHS Directive 2011/65/EU.

 2012/19/EU (WEEE directive): Products marked with this symbol cannot be disposed of as unsorted municipal waste in the European Union. For proper recycling, return this product to your local supplier upon the purchase of equivalent new equipment, or dispose of it at designated collection points. For more information see: www.recyclethis.info

 2006/66/EC (battery directive): This product contains a battery that cannot be disposed of as unsorted municipal waste in the European Union. See the product documentation for specific battery information. The battery is marked with this symbol, which may include lettering to indicate cadmium (Cd), lead (Pb), or mercury (Hg). For proper recycling, return the battery to your supplier or to a designated collection point. For more information see: www.recyclethis.info

Industry Canada ICES-003 Compliance




This device meets the CAN ICES-3 (A)/NMB-3(A) standards requirements.

Applicable Models

This manual is applicable to switches below: DS-3WF01C-2N (product series).

Symbol Conventions

The symbols that may be found in this document are defined as follows.

Symbol	Description
 NOTE	Provides additional information to emphasize or supplement important points of the main text.
 WARNING	Indicates a potentially hazardous situation, which if not avoided, could result in equipment damage, data loss, performance degradation, or unexpected results.
 DANGER	Indicates a hazard with a high level of risk, which if not avoided, will result in death or serious injury.

WARNING

- During the installation and utilization of the device, please strictly conform to electrical safety rules in different nations and regions.
- You shall acknowledge that the use of the device with Internet access might be under network security risks, please strengthen protection for your personal information and data security. If you find the device might be under network security risks, please contact with us.

Catalog

Chapter 1 Introduction	5
1.1 Overview	5
1.2 Packing List	5
1.3 Appearance	5
1.3.1 Front Panel	5
Chapter 2 Installation	7
Chapter 3 Prepare	9
Chapter 4 Configuration	11

Chapter 1 Introduction

1.1 Overview

The DS-3WF01C-2N wireless bridge can be applied to elevator internal monitoring video transmission, and can use the multi-network port to connect to the elevator advertising machine for real-time data update.

1.2 Packing List

The packing list is shown as below. If any accessories are damaged or lost, keep the package intact and contact your dealer for replacement.

Table 1-1 Packing List of DS-3WF01C-2N

Name	Item	Quantity
Device	DS-3WF01C-2N	2
Power Adapter	12 V, 1 A	2
Mounting Bracket	For installing device	2
Pole Mounting Straps	For installing device	4
Quick Start Guide	Instruction manual	1

1.3 Appearance

1.3.1 Front Panel

Front panel of DS-3WF01C-2N is shown as below.

Front Panel of DS-3WF01C-2N



Figure 1-1 DS-3WF01C-2N Front Panel

Physical Interface

The hardware interfaces of the DS-3WF01C-2N are as follows.



Figure 1-2 Physical Interface

Table 1-1 Physical Interface

Index	Description
1	Access to the camera, digital signage and other equipments
2	Access to the camera, digital signage and other equipments
3	Signal strength indicator
4	12 V DC power supply port
5	Restore default factory settings
6	PoE port connection with PoE power supply

Chapter 2 Installation

Step 1 First install the mounting bracket on the main unit. The supporting bracket of the device contains a magnet to help the device automatically adsorb on the surface of the iron-containing material.

 **NOTE**

- If the surface of the mounting device does not contain iron, please install it with the plastic ties.

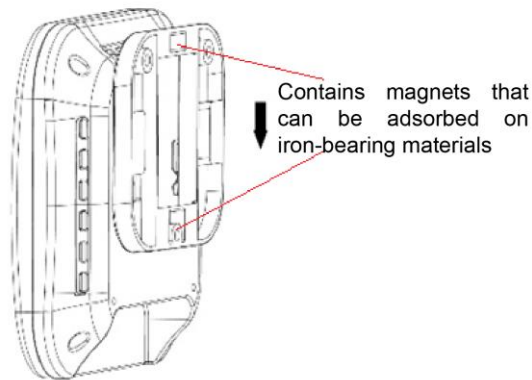


Figure 2-1 Install host

Step 2 Install the AP device on top of the shaft of the elevator shaft as shown below:

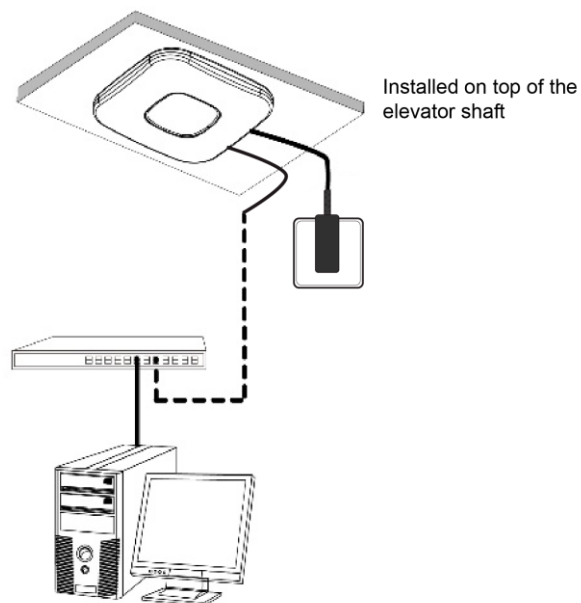


Figure 2-2 Power on the device

Step 3 Install the CPE device on top of the elevator, as shown below:

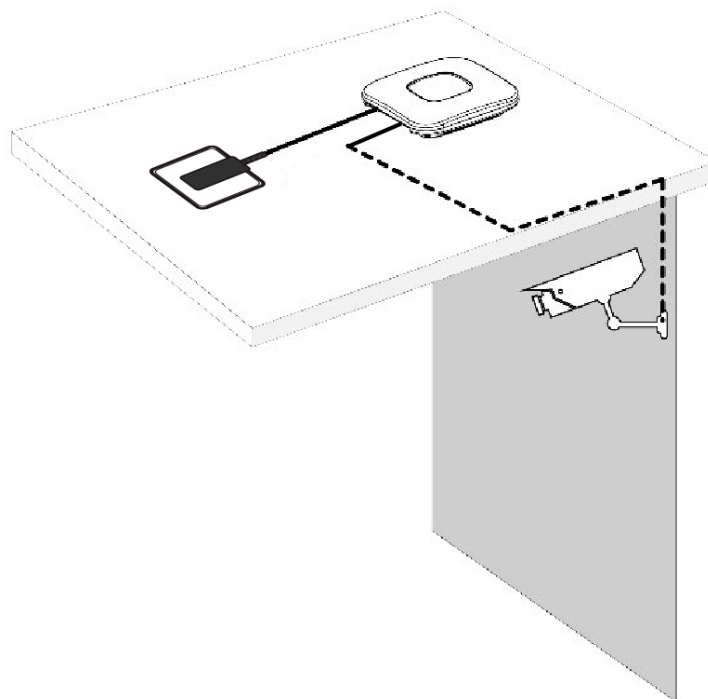


Figure 2-3 Finish installation

 **NOTE**

- The device must be installed without direct obstruction and the two devices are aligned up and down.

Chapter 3 Prepare

Step 1 Use a network cable to connect the computer to the LAN interface of the device to prepare the device. First, you need to configure the computer IP address and the device's default IP address to be on the same network segment. Take the Windows 7 system as an example. Click the network logo in the lower right corner of the desktop and click Open Network & Internet settings-Network and Sharing Center. As shown below.

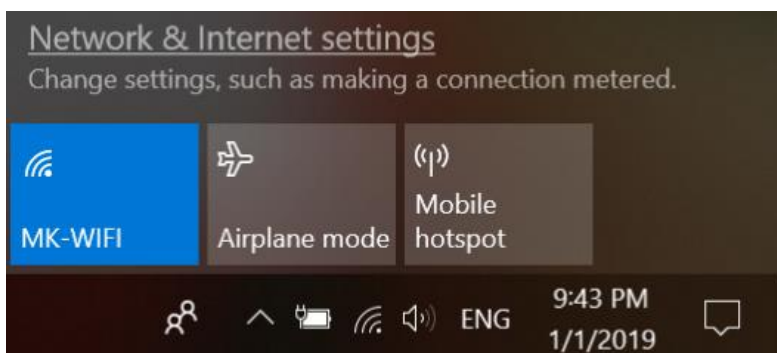


Figure 3-1 Network & Internet settings

Step 2 Click "Local Area Connection" on the right and click "Properties". As shown below.

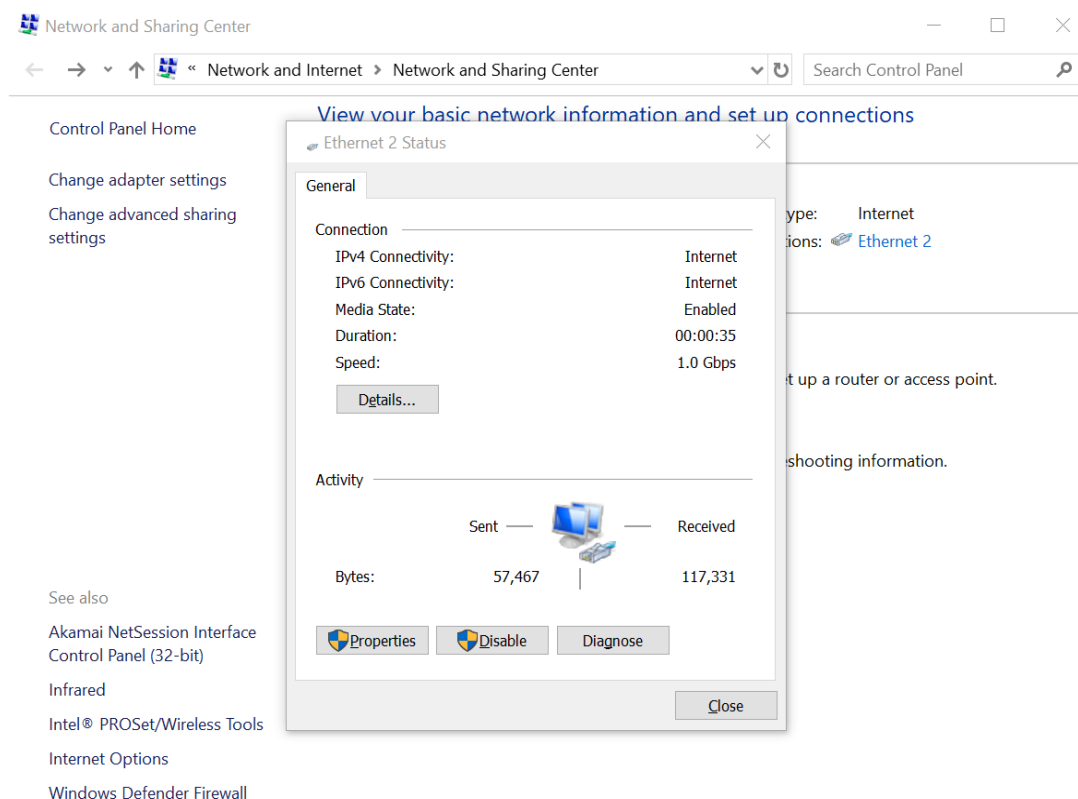


Figure 3-2 Local Area Connection

Step 3 Double-click Internet Protocol Version 4 (TCP/IPv4). As shown below.

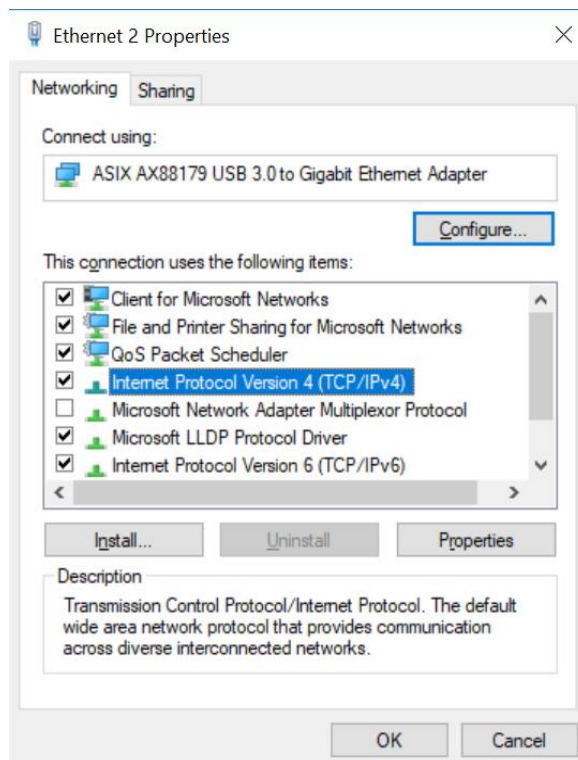


Figure 3-3 Internet Protocol Version 4 (TCP/IPv4)

Step 4 Configure the IP address of the computer to be the unused 192.168.1.X address in the LAN. X is any integer other than 35, 36 in 2 to 253. The subnet mask is 255.255.255.0. Click "OK" as shown below.

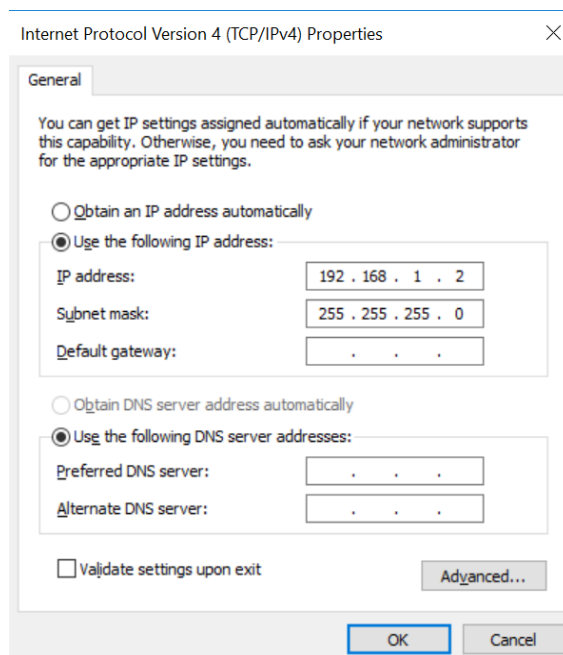


Figure 3-4 Configure the IP

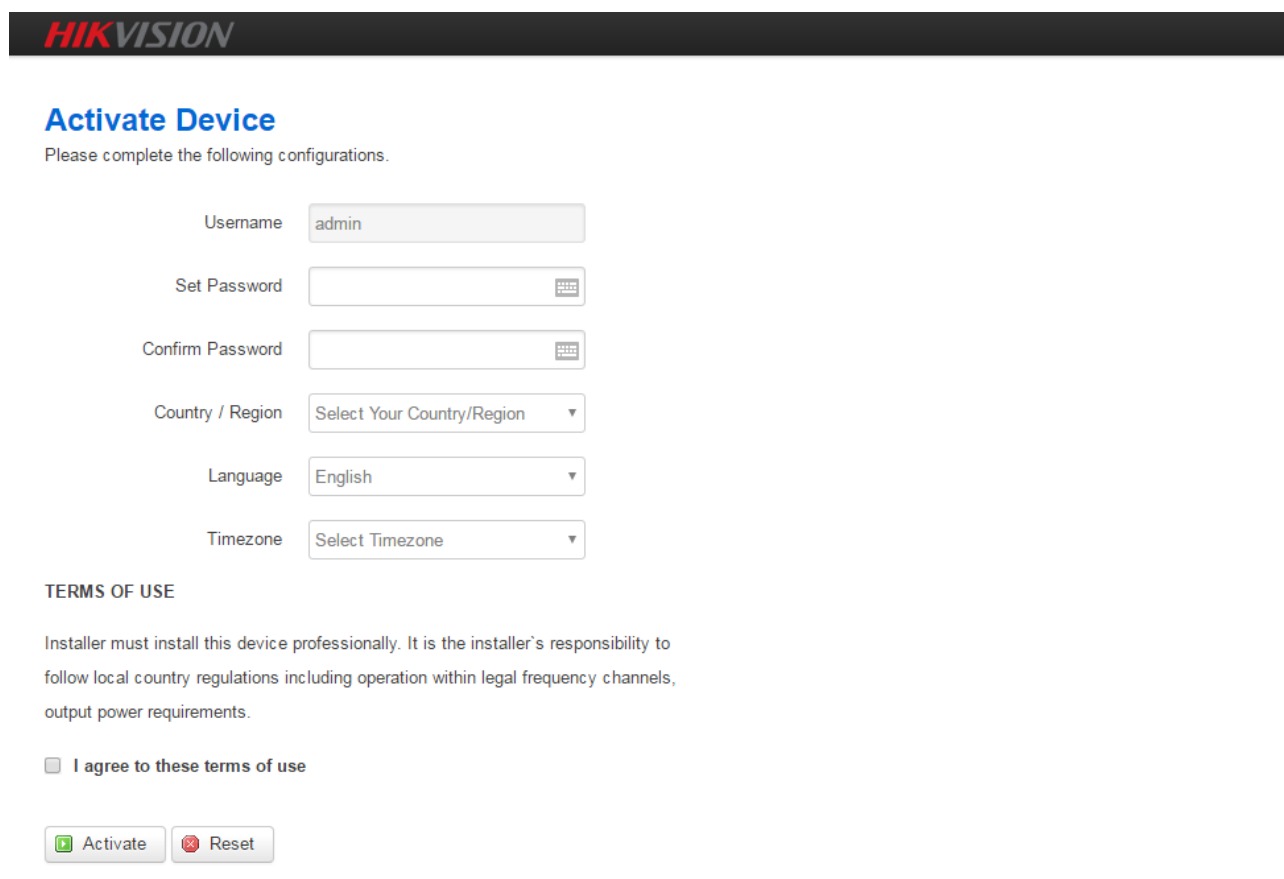
Chapter 4 Configuration

After the preparation is completed, start the device configuration.

Step 1 Make sure that the IP address of the computer is inconsistent with the default IP address of the device. On the same network segment, use a browser to log in to the device, open a browser, and enter the default IP address of the device in the address bar: 192.168.1.35 / 192.168.1.36.

NOTE

- When you log in to the device for the first time, click Enter, enter the device activate page. The user name is admin, and the user password is set by the user. You also need to select your password, country, language and time zone, as shown in Figure 4-1. Check "I agree to these terms of use" and click "Activate" to jump to login page, as shown in Figure 4-2. Take the AP device as an example.



HIKVISION

Activate Device

Please complete the following configurations.

Username

Set Password

Confirm Password

Country / Region

Language

Timezone

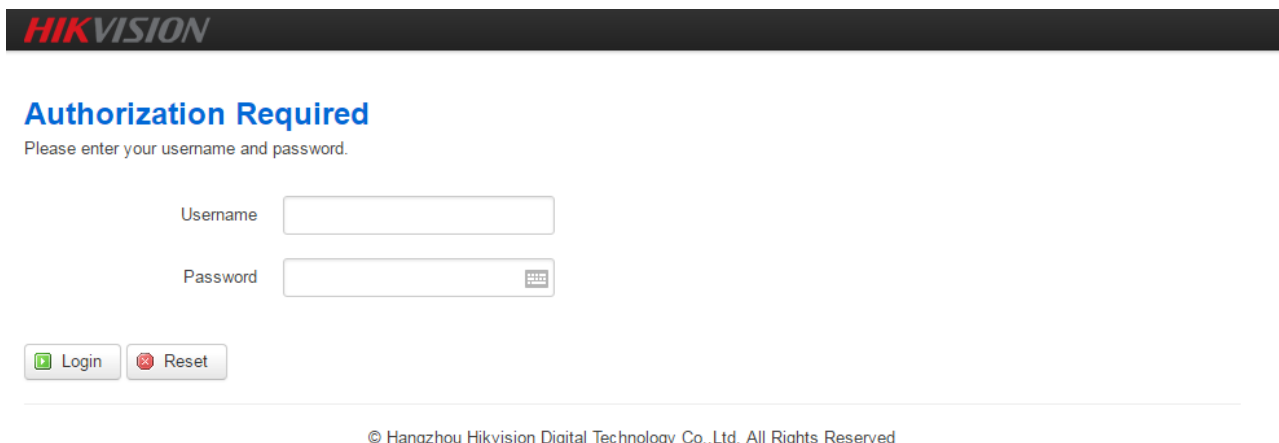
TERMS OF USE

Installer must install this device professionally. It is the installer's responsibility to follow local country regulations including operation within legal frequency channels, output power requirements.

I agree to these terms of use

© Hangzhou Hikvision Digital Technology Co.,Ltd. All Rights Reserved

Figure 4-1 Activate



HIKVISION

Authorization Required

Please enter your username and password.

Username

Password

© Hangzhou Hikvision Digital Technology Co.,Ltd. All Rights Reserved

Figure 4-2 login

Step 2 The first page shown after log in is the Wizard page, and this page helps to set the basic network parameters. The default mode is Bridge mode, and the default LAN IP address of AP device is 192.168.1.35, the default LAN IP address of CPE device is 192.168.1.36.

 **NOTE**

- If there are several devices connected in the Point-to-Point or Point-to-Multi-Point topologies, they must be configured to different IP address to avoid conflicts.

AP: In this scenario mode, the device will be set to access point mode; it can be connected to a client device. When you close the TDMA function, your phone or laptop can connect to the device.

CPE: In this scenario mode, the device will be set to client mode; it can be connected to an access point device.

 **NOTE**

- The default SSID of the AP device and the CPE device must be the same to directly interconnect and transmit audio, video or data. If there are other DS-3WF01C-2N devices within 500 meters, the SSID should be changed to be different in order to avoid connection confusion.

Click Save & Apply button, the device will reboot and apply your configuration.

Wizard

Wizards can help you quickly configure frequently used parameters. After completing the wizard, you can also access other pages for more detailed configuration.

Device Name	<input type="text" value="Wireless Bridge"/>
Application scenarios	<input type="text" value="AP"/>
SSID	<input type="text" value="Wireless-T"/>
Channel	<input type="text" value="Auto"/>
IPv4 address	<input type="text" value="192.168.1.35"/>
IPv4 netmask	<input type="text" value="255.255.255.0"/>
IPv4 gateway	<input type="text"/>
DNS servers	<input type="text"/>

Figure 4-3 Wizard

Users can also click the “Network” bar at the top of the page to enter the “Wireless” page, click the “Edit” button and modify the network name, frequency, key and other parameters.

AP "ath0: Wireless-T"

The *Device Configuration* section covers physical settings of the radio hardware such as channel, transmit power or antenna selection which is shared among all defined wireless networks (if the radio hardware is multi-SSID capable). Per network settings like encryption or operation mode are grouped in the *Interface Configuration*.

Device Configuration

General Setup **Advanced Settings**

Status **Mode:** Access Point (WDS) | **SSID:** Wireless-T
 100% **BSSID:** 9C:B7:93:E6:B1:E2 | **Encryption:** WPA2-PSK (CCMP)
Channel: 3 (2.422 GHz) | **Tx-Power:** 14 dBm
Signal: -96 dBm | **Noise:** -95 dBm
Bitrate: 144.4 Mbit/s | **Distance:** < 10.0 km

Wireless network is enabled Disable

Channel

Auto channel list Select

Select channel periodically Reselect best channel periodically when no client was connected

Antenna

Transmit Power dBm Allowing adjusting transmission power
 Caution: It is installer's responsibility to follow local regulations while adjusting the transmission power

Mode

HT mode

Max Transmission Rate

Interface Configuration

General Setup **Wireless Security** MAC-Filter Advanced Settings Rate Limit

SSID

Mode

Network lan: create:

Choose the network(s) you want to attach to this wireless interface or fill out the create field to define a new network.

Hide SSID

Figure 4-4 Wireless

For the CPE device configuration, please refer to the AP device configuration.



See Far, Go Further