

HIKVISION



Information Release System

Quick Start Guide

TABLE OF CONTENTS

Chapter 1 Requirements on Computer and Server	4
1.1 Operation System Requirements	4
1.2 Supported Browsers	4
1.3 Firewall Settings	4
1.4 Static IP Address for Server	4
Chapter 2 Activation and Password Resetting	5
2.1 Activation	5
2.2 Reset Password.....	7
Chapter 3 Register Terminal to Server	8

Quick Start Guide

COPYRIGHT ©2017 Hangzhou Hikvision Digital Technology Co., Ltd.

ALL RIGHTS RESERVED.

Any and all information, including, among others, wordings, pictures, graphs are the properties of Hangzhou Hikvision Digital Technology Co., Ltd. or its subsidiaries (hereinafter referred to be “Hikvision”). This user manual (hereinafter referred to be “the Manual”) cannot be reproduced, changed, translated, or distributed, partially or wholly, by any means, without the prior written permission of Hikvision. Unless otherwise stipulated, Hikvision does not make any warranties, guarantees or representations, express or implied, regarding to the Manual.

About this Manual

This Manual is applicable to Information Release System.

The Manual includes instructions for using and managing the product. Pictures, charts, images and all other information hereinafter are for description and explanation only. The information contained in the Manual is subject to change, without notice, due to firmware updates or other reasons. Please find the latest version in the company website (<http://overseas.hikvision.com/en/>).

Please use this user manual under the guidance of professionals.

Trademarks Acknowledgement

HIKVISION and other Hikvision’s trademarks and logos are the properties of Hikvision in various jurisdictions. Other trademarks and logos mentioned below are the properties of their respective owners.

Legal Disclaimer

TO THE MAXIMUM EXTENT PERMITTED BY APPLICABLE LAW, THE PRODUCT DESCRIBED, WITH ITS HARDWARE, SOFTWARE AND FIRMWARE, IS PROVIDED “AS IS”, WITH ALL FAULTS AND ERRORS, AND HIKVISION MAKES NO WARRANTIES, EXPRESS OR IMPLIED, INCLUDING WITHOUT LIMITATION, MERCHANTABILITY, SATISFACTORY QUALITY, FITNESS FOR A PARTICULAR PURPOSE, AND NON-INFRINGEMENT OF THIRD PARTY. IN NO EVENT WILL HIKVISION, ITS DIRECTORS, OFFICERS, EMPLOYEES, OR AGENTS BE LIABLE TO YOU FOR ANY SPECIAL, CONSEQUENTIAL, INCIDENTAL, OR INDIRECT DAMAGES, INCLUDING, AMONG OTHERS, DAMAGES FOR LOSS OF BUSINESS PROFITS, BUSINESS INTERRUPTION, OR LOSS OF DATA OR DOCUMENTATION, IN CONNECTION WITH THE USE OF THIS PRODUCT, EVEN IF HIKVISION HAS BEEN ADVISED OF THE POSSIBILITY OF SUCH DAMAGES.




REGARDING TO THE PRODUCT WITH INTERNET ACCESS, THE USE OF PRODUCT SHALL BE WHOLLY AT YOUR OWN RISKS. HIKVISION SHALL NOT TAKE ANY RESPONSIBILITIES FOR ABNORMAL OPERATION, PRIVACY LEAKAGE OR OTHER DAMAGES RESULTING FROM CYBER ATTACK, HACKER ATTACK, VIRUS INSPECTION, OR OTHER INTERNET SECURITY RISKS; HOWEVER, HIKVISION WILL PROVIDE TIMELY TECHNICAL SUPPORT IF REQUIRED.

SURVEILLANCE LAWS VARY BY JURISDICTION. PLEASE CHECK ALL RELEVANT LAWS IN YOUR JURISDICTION BEFORE USING THIS PRODUCT IN ORDER TO ENSURE THAT YOUR USE CONFORMS THE APPLICABLE LAW. HIKVISION SHALL NOT BE LIABLE IN THE EVENT THAT THIS PRODUCT IS USED WITH ILLEGITIMATE PURPOSES.

IN THE EVENT OF ANY CONFLICTS BETWEEN THIS MANUAL AND THE APPLICABLE LAW, THE LATER PREVAILS.

Symbol Conventions

The symbols that may be found in this document are defined as follows.

Symbol	Description
 NOTE	Provides additional information to emphasize or supplement important points of the main text.
 WARNING	Indicates a potentially hazardous situation, which if not avoided, could result in equipment damage, data loss, performance degradation, or unexpected results.
 DANGER	Indicates a hazard with a high level of risk, which if not avoided, will result in death or serious injury.

Chapter 1 Requirements on Computer and Server

Purpose:

There are requirements on computer and server settings.

1.1 Operation System Requirements

Win7, Win8, Win10 (32 bit/64 bit)

Original Microsoft operation system. Operation system installed using backup software like Norton Ghost is not recommended.

1.2 Supported Browsers

- Internet Explorer 10/11
- Firefox45+

1.3 Firewall Settings

Turn off Windows Firewall function of your computer.

1.4 Static IP Address for Server

Set the information release server with a static IP address.

Chapter 2 Activation and Password Resetting

2.1 Activation

Purpose:

For the first time to use an information release screen (hereinafter referred to as the terminal), activate it before any operation.

Before you start:

Ensure your computer is in the same network segment with information release screen.

Step 1 Run client software.

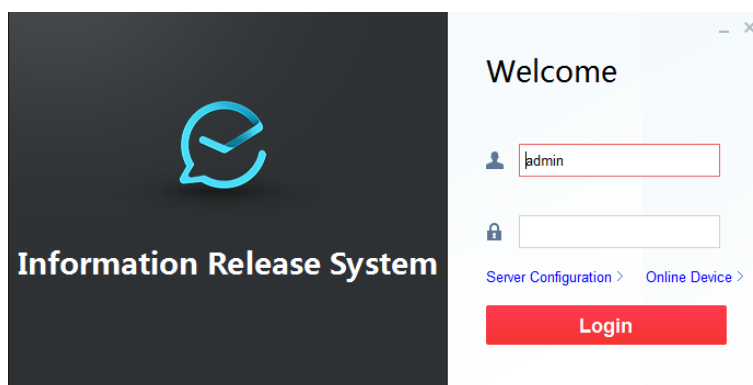


Figure 2-1 Login

Step 2 Click **Online Device**.

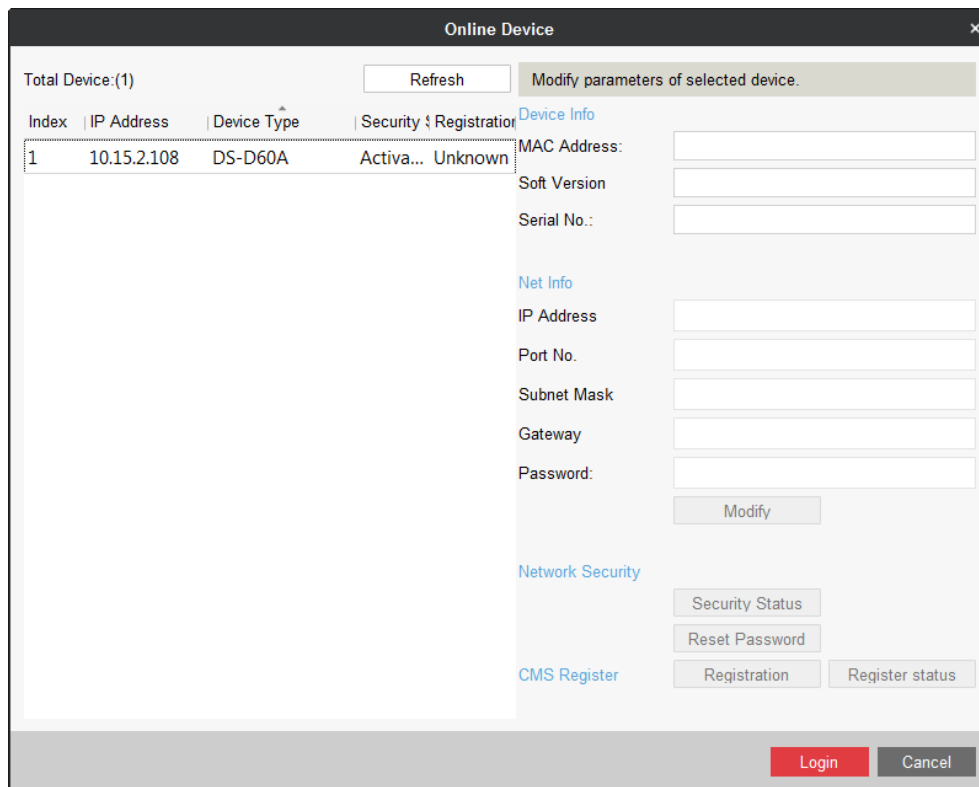


Figure 2-2 Online Device

Step 3 Select terminal to activate and click **Security Status**.



Figure 2-3 Network Information

Step 4 Enter Password, enter the same password in Confirm Password text-field, and click **Apply**.

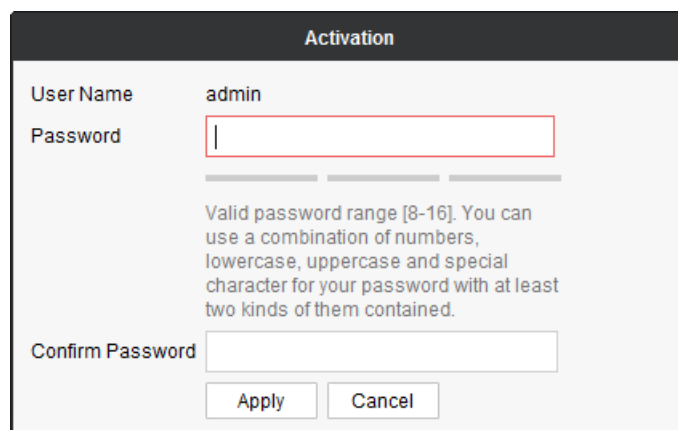


Figure 2-4 Activation

2.2 Reset Password



You are highly recommended to reset password with the help of our technical support.

Step 1 Click **Export** to export the restoration file and send the file to our technical support.

 A dialog box titled "Restore Default Password" with a dark header. It contains two buttons: "Export" and "Import". Below them is a "Password" text field, followed by a horizontal separator line. Under the line is a text instruction: "Valid password range [8-16]. You can use a combination of numbers, lowercase, uppercase and special character for your password with at least two kinds of them contained." Below this is a "Confirm Password" text field. At the bottom right are two buttons: "OK" (red) and "Cancel" (grey).

Figure 2-5 Reset Password

Step 2 Technical support will send you back a file. Click **Import** and select the file.

Step 3 Enter Password, enter the same password in Confirm Password text-field, and click **OK**.

Chapter 3 Register Terminal to Server

Purpose:

Register the information release screen (hereinafter referred to as the terminal) to information release server (hereinafter referred to as the server).

Before you start:

Activate the terminal to register.

Step 1 Run client software.

Step 2 Click **Online Device**.

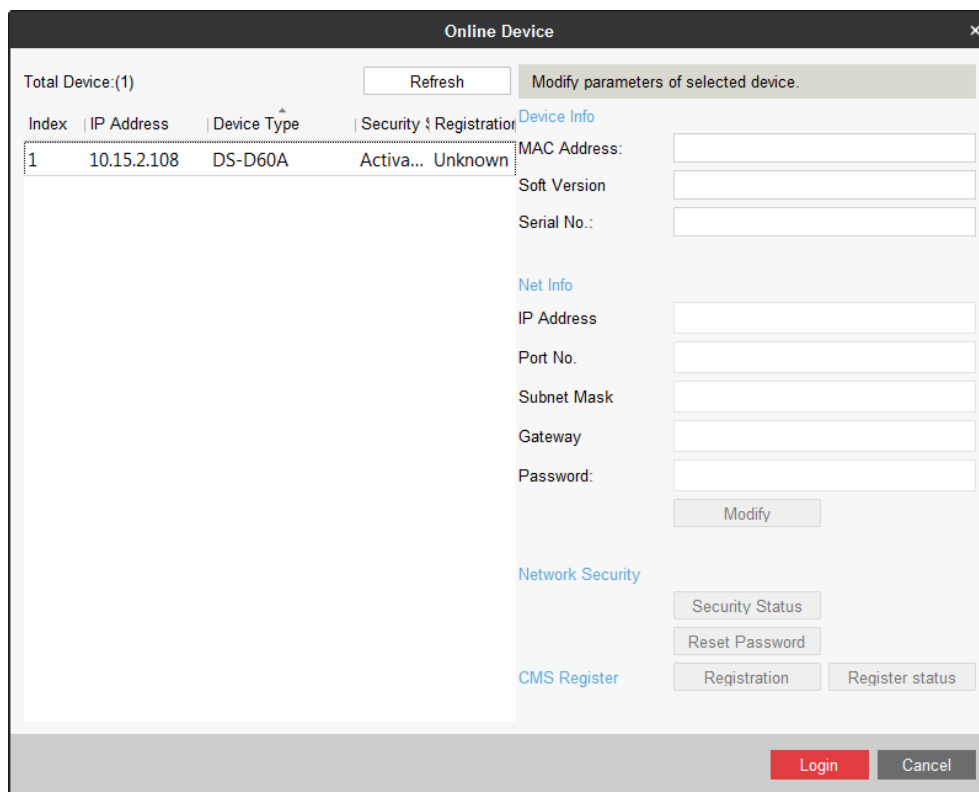


Figure 3-1 Online Device

Step 3 Select an activated terminal and click .

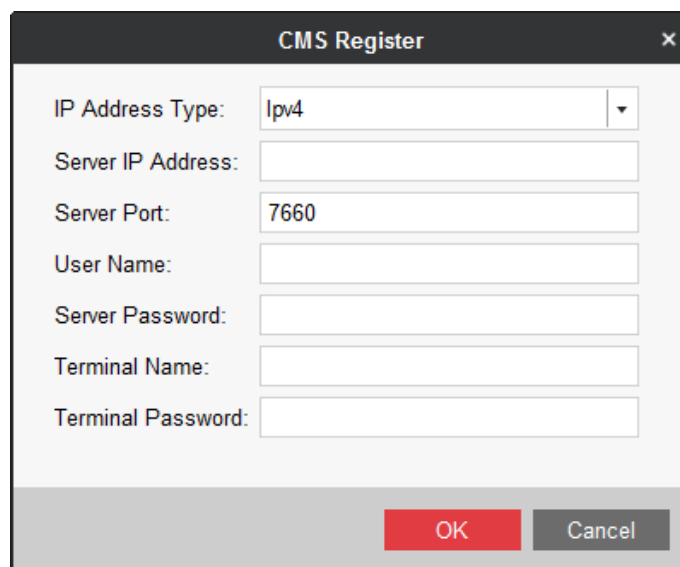


Figure 3-2 CMS Register

Step 4 Enter server information, including Server IP Address, Server Port, server User Name, and Server Password.

Step 5 Enter a custom Terminal Name.

Step 6 Enter the Terminal Password.

Step 7 Click **OK**.

Step 8 Optionally, click and enter Terminal Password to check registration status.

0102001070627



First Choice for Security Professionals

UD06911B

www.hikvision.com