

Outdoor 8-character Module DS-TVL221-3-6

Outdoor 8-character module DS-TVL221-3-6 is the auxiliary product for parking induction and entry system, mainly installed in the access or various control areas of parking lot. It can publish the remaining parking number to guide drivers to find parking space. It adopts standard RS485/RJ45 communication way, and can display number and dynamic arrows. Besides, this product can publish advertising information for easy daily management of parking lot if required.



Remark: product in kind prevail, picture for reference only.

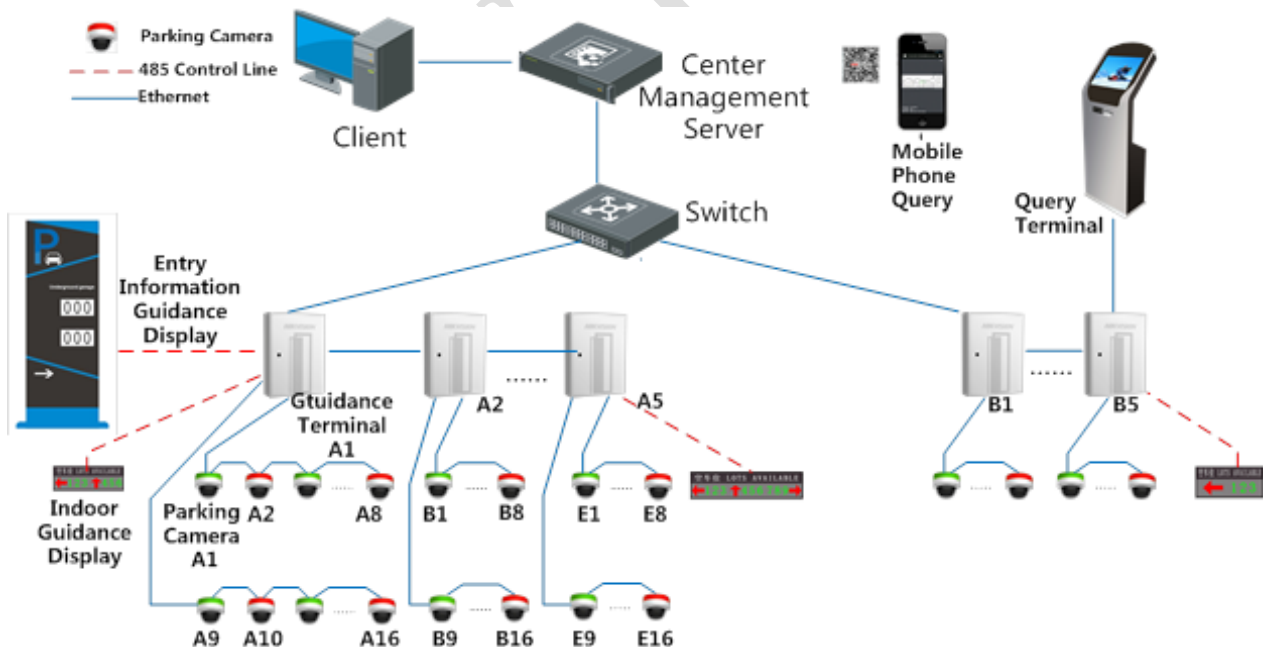
Model Description

Product Model	Description
DS-TVL221-3-6	Outdoor, one-way, RS-485 transmission, network transmission

Key Characters

- Standard RS485/RJ45 communication
- Display dynamic arrows and remaining parking space number
- LED module supports red arrows and green numbers to show remaining parking space number
- Easy configuration and maintenance

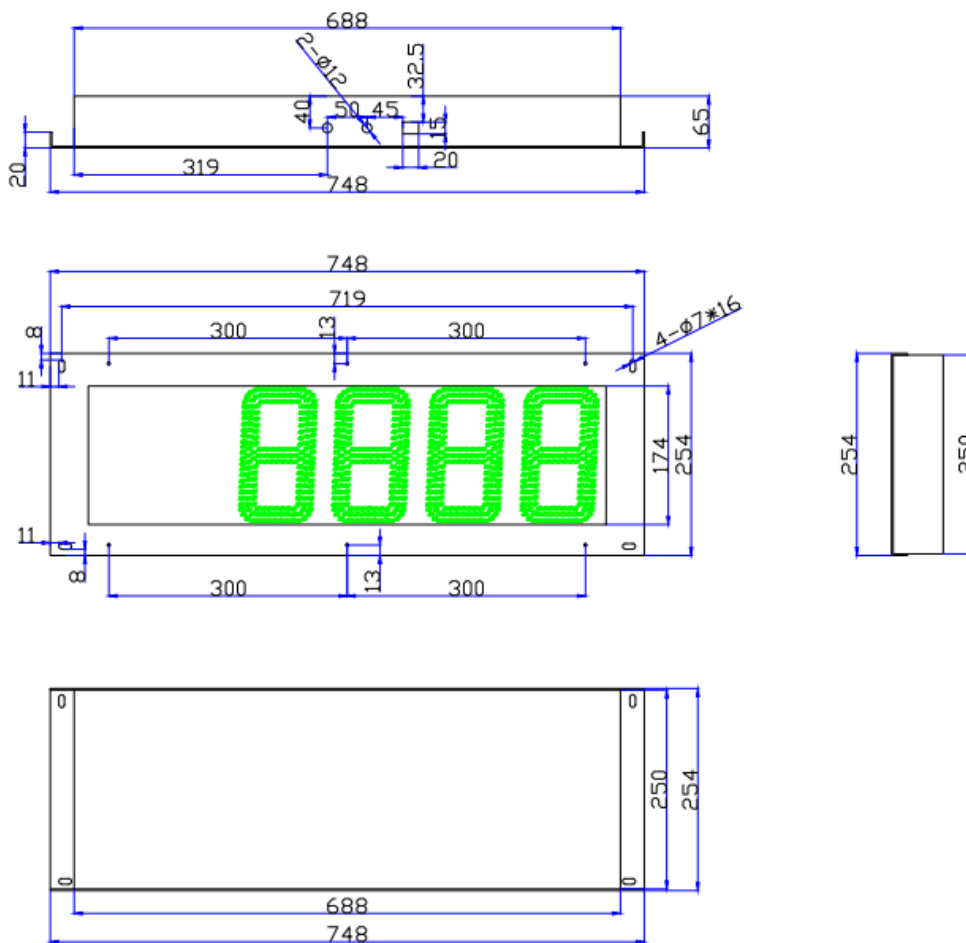
Typical Reference



Technical Parameters

Item	Outdoor guidance screen module
Model	DS-TVL221-3-6
Scope of application	Outdoor parking lot
Working voltage	AC 220V
Power consumption	50W in maximum,25W in average
Display mode	Real-time display
Dimension	748mm×254mm×65mm
LED screen frame	Black aluminium alloy frame
Character display	Support number and arrows, variable
Color display	Red arrows and green number
Communication mode	RS485/RJ45
Number display	Display 1 arrows and 4 numbers
Working environment	Temp:-20℃~50℃ Humidity:<95%

Dimension



Unit: mm