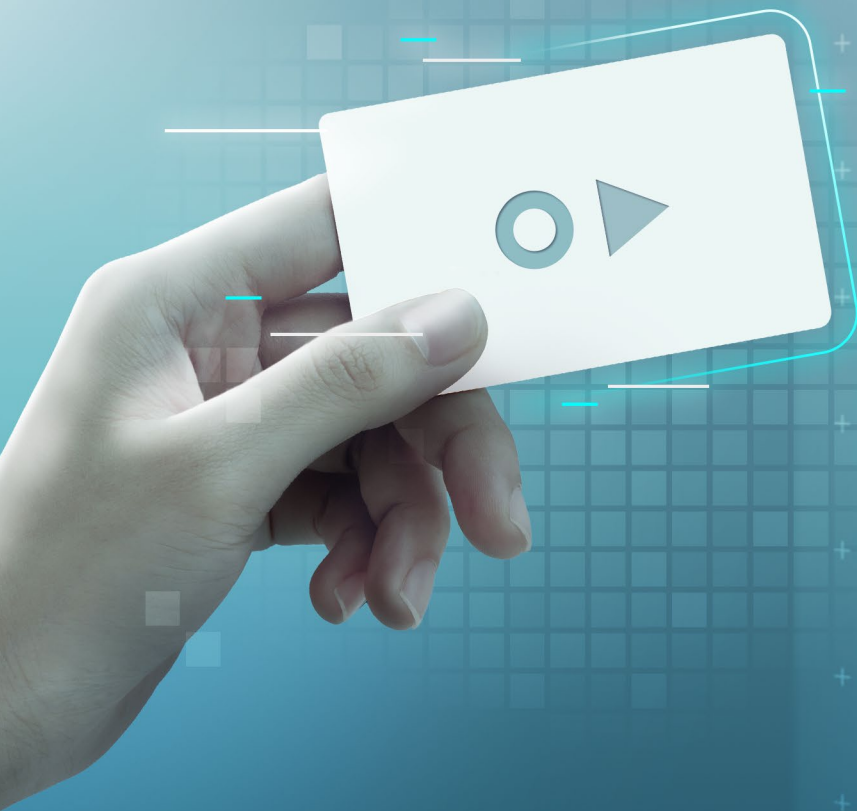


HIKVISION[®]

TAKE DOOR SECURITY TO THE NEXT LEVEL



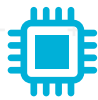
DESFire Solution

For more secure, touch-free access control



TAKE DOOR SECURITY TO THE NEXT LEVEL

Security needs to keep up with the threats it combats. This is especially important to organizations that have a greater need to secure premises, equipment and people. Hikvision has upgraded its access control solution to be compatible with DESFire cards – one of the most secure entry keycards on the market. With a highly secure microcontroller, randomised key process and support of more encryption algorithms, these cards provide the next level of security. A built-in microprocessor also means it can store information itself, making it scalable for future security developments.



Highly Secure Microcontroller

Using an NXP chip provides highly secure microcontroller-based integrated circuits. This means the chip is small, light, and provides 4k data storage.



Randomised Key

Uses a temporary key in the form of a random number every time it's used. This ensures that the key is not the same for every swipe, making it more secure and harder to fake.



Extra Encryption Algorithms

Supports DES/3DES/AES encryption algorithm, making it much safer.

SOLUTION TOPOLOGY

