

Indoor Floor-Standing Series

DIGITAL SIGNAGE

See the Real, Feel the Impact.



**Superior Clarity
and Wide View**



**Quick Installation,
Easy-to-Use**



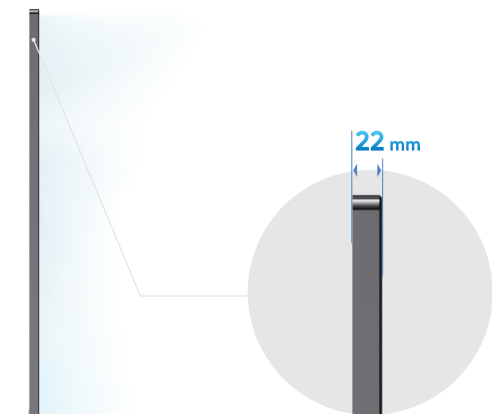
**Elegant Design
with Sleek Look**



Responsive Touchscreen
(only for the Touch Model)

Elegant Design

23mm three-sided even bezel design delivers a clean, minimalist aesthetic. Anodized, brushed, and diamond-cut finishing creates an oxidation-resistant product with superior visual appeal.



Elegant Metal Finish

Minimalist Border Design



HIKVISION®



Quick Installation Easy Maintenance



Installation can be completed in just 2 steps.



Antenna-free design eliminates for cleaner setup.



Key lock provides secure module maintenance, while fanless cooling design ensures silent operation.

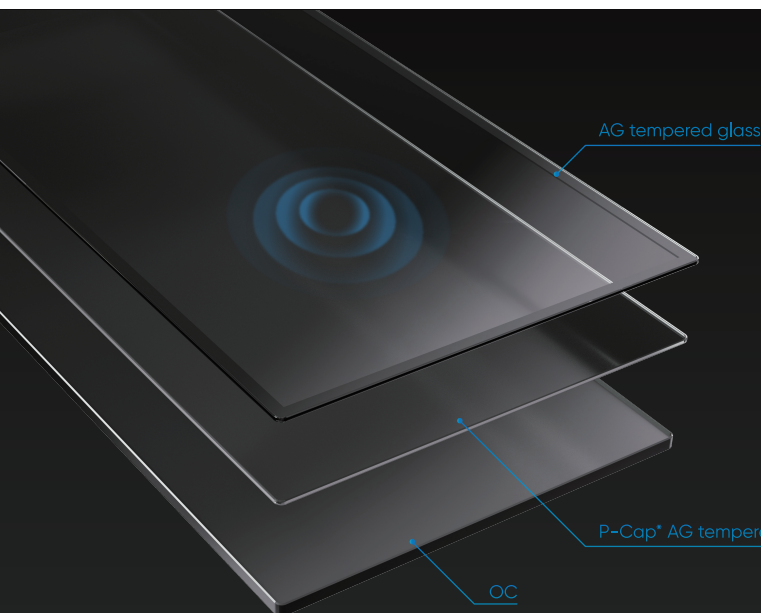
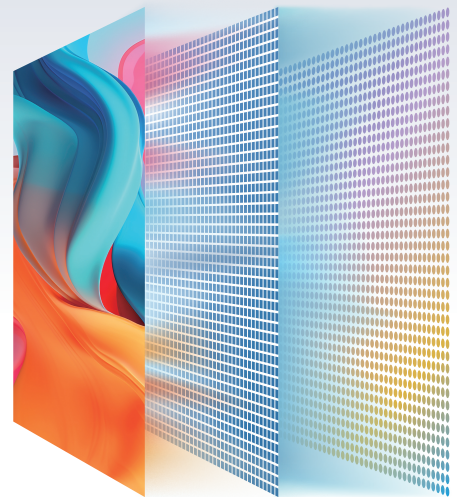


Stunning 4K Clarity 500 Nits Brightness

The Floor-Standing Series features 500 nits brightness, 4K ultra HD*, 25% haze, 178° FOV, and wide color gamut, delivering exceptional visual performance.

** Resolution: 3840 × 2160*

4K



Responsive Touchscreen

Glass-on-glass AG tempered glass with OC zero-gap bonding cuts glare, sharpens 4K detail, and boosts durability, while its 10-point capacitive touch enables direct user engagement.*

**only for the Touch Model*

Energy Efficient

Fanless cooling keeps the display silent and power-smart. HDMI-triggered auto wake/sleep and programmable on/off timers cut standby energy throughout the day.



HCF Powers Integrated Retail Solution

Combining HCF's one-stop smart retail solution with content design, content distribution, and device management to drive business growth.



Remote Device Management



Powerful Program Editing



Diverse Material Types



Flexible Schedule Settings



Supervisor Approval Feature



Weather Forecast Plugin



Built-in Templates



RSS Content Display

Model	DS-D6055UN-D/S	DS-D6055UT-D/S
Touch		
Touch Type	/	Capacitive Touch (G+G)
Touch Point	/	10
Touch Response Time	/	<25 ms
Touch Precision	/	± 2 mm
Display		
Screen Size	55 inch	
Resolution	2160 × 3840	
Active Display Area	1209.6 (H)mm × 680.4 (V) mm	
Pixel Pitch	0.315 (H) mm × 0.315 (V) mm	
Backlight	E-LED	
Viewing Angle	178°(H)/178°(V)	
Contrast Ratio	1200:1	
Brightness	500 cd/m²	
Color Depth	10 bit (8 bit + FRC)	
Response Time	8 ms	
Color Gamut	72% NTSC	
Reliability	7 × 24h	
Refresh Rate	60 Hz	
Haze	25%	
Display Ratio	9:16	
Panel Type	IPS	
Built-in System		
Operation System	Android 13	
Processor	Cortex-A55, 4-core, main frequency 1.92 GHz	
Memory	4 GB	
Built-in Storage	32 GB EMMC	
Interface		
Video & Audio Input	HDMI 2.0 (HDCP 2.2) × 1	
Video & Audio Output	Speaker (8Ω 5 W) × 2	
Network Interface	RJ45 × 1, Wi-Fi (2.4G/5G, 802.11 a/b/g/n/ac/ax) × 1, RS232 in × 1, RS232 out × 1	
Data Transmission Interface	USB 2.0 × 1, USB 3.0 × 1, BT 5.4 × 1	
Power		
Input Voltage	100 to 240 VAC, 50/60 Hz	
Standby Consumption	≤ 0.5 W	
Power Consumption	108 W (typ), 155 W (max)	
Working Environment		
Working Temperature	0 °C to 40 °C (32 °F to 104 °F)	
Working Humidity	10% to 80% RH (Condensation)	
Storage Temperature	-20 °C to 60 °C (-4 °F to 140 °F)	
Storage Humidity	10% to 90% RH (Condensation)	
General		
Mounting Type	Floor standing	
Product Dimensions (W × H × D)	740 (W) mm × 1886 (H) mm × 480 (D) mm (With Stand) 727 (W) mm × 1776 (H) mm × 63.8 (D) mm (Without Stand)	
Package Dimensions (W × H × D)	840 (W) mm × 1895 (H) mm × 155 (D) mm	
Net Weight	46.5 kg	
Gross Weight	52 kg	



www.hikvision.com
support@hikvision.com



HIKVISION®