

DS-A71024R-V2 Series Storage System

Introduction

The DS-A71 series is an economical and reliable Hybrid SAN (Storage Area Network) product. Hikvision Hybrid SAN product creates a network with access to data storage servers, and it integrates Hikvision's unique video direct streaming technology as well as supports IPSAN. Hybrid SAN system supports third-party cameras such as BOSCH, AXIS, SONY, Samsung, etc., and supports RTSP and SIP protocols, and extended data retention. With no recording server needed, Hikvision's Hybrid SAN systems truly make applications simple, flexible, and budget-friendly.



Key Feature

Economical and Stable Hardware Platform

- Intel 64-bit multi-core processor.
- 4 to 64 GB high-speed cache.
- PCI-E3.0 high-speed transmission channel, support 4 × GbE or 2 × 10GbE is extendable
- Three 10M/100M/1000M network interfaces.
- Redundant design for key modules.
- 4U chassis model supports 24 HDDs.

HDD Detection and Repair/RAID Optimization

- Detection before operation.
- Detection in operation.
- Fault repair.
- RAID 0, 1, 3, 5, 6, 10, 50.
- Global and local hot spare.
- Quick RAID building.
- Capability of cascading up to two storage enclosures behind a single SAS port.

Advanced Data Protection

- Synchronous backup of key information in system disk and HDD.
- RAID-based tamper-proof data technology.
- Auto data synchronization between devices.
- Video backup via network, USB and external adapters.

Energy Efficient

- CPU load balance.
- Auto fan tuning.

User-Friendly UI

- One touch configuration.
- Various alarm management such as loss of recording, camera disconnected, motion detection, alarm input.
- Supports SADP protocol.
- Supports SNMP.

Surveillance-Specialized Stream Media Direct Storage (Direct Streaming Mode)

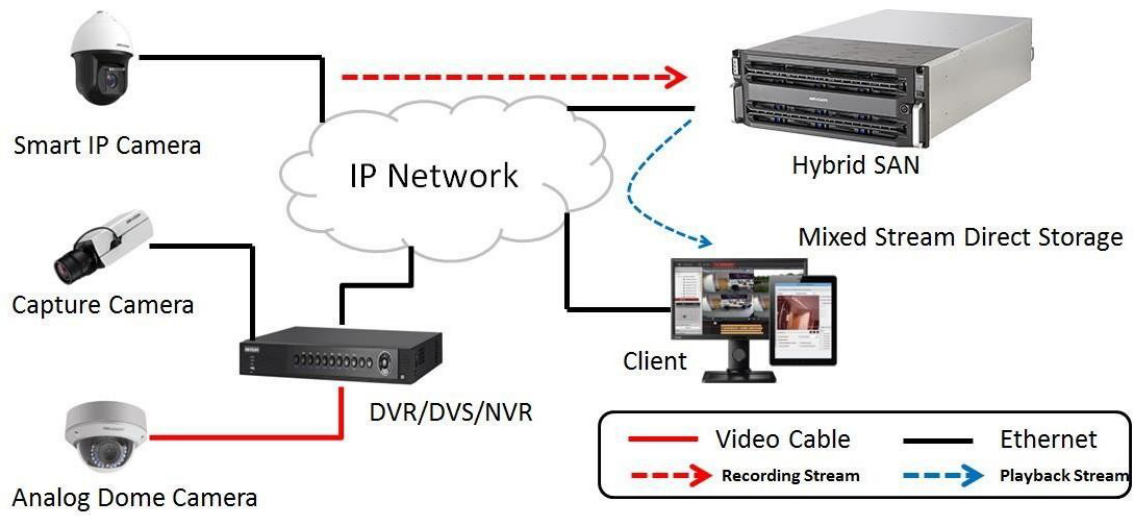
- Space pre-allocation strategy.
- Direct storage for video and picture streams.
- Supports direct IP camera/DVR/NVR streaming and recording.
- Recording resolution up to 32MP.
- Support H264, H264+, H265, H265+.
- Support N+1.
- Supports camera access through RTSP, ONVIF, and PSIA protocol.
- Supports alarm/scheduled/manual/motion recording.
- Automatic network replenishment (ANR), timely uploading, and video loss alarm.
- Lock key videos.
- Supports both Direct Streaming Mode and IPSAN Mode.
- Search, play, and download videos by video type or video time.



Specification

	Model	DS-A71024R
Performance	Direct Streaming Mode:video (2 Mbps) + picture	320-ch recording + playback (1024Mbps)
	IPSAN	180-ch recording + playback (900Mbps)
Hardware	Processor	Intel 64-bit multi-core processor
	Cache	4 to 64 GB
Storage	HDD slot	24
	Interface/capacity	SATA/Up to 16 TB
	Hot-swapping	Supported
	RAID	RAID 0, 1, 3, 5, 6, 10, 50, 60 JBOD, Hot-Spare
Network	Protocol	iSCSI, RTSP, ONVIF, PSIA
Storage Management	Disk management	Disk inspection, alarm and repair
	Logical volume management	iSCSI volume, video volume management
Recording Management	Recording mode	Timing recording, manual recording, dual-stream recording, alarm recording
	Video protection	Lock key video, N+1 service protection, ANR, video loss detection and alarm
	Searching mode	Search by time and event
	Downloading mode	Quick download, batch download, download by segment, download by merging
Device Maintenance	Management mode	Web-based GUI, serial port CLI, centralized management of multiple devices
	Alarm mode	Sound, light, email, message, web page
	Log downloading	Download on web page
External interface	Data network interface	2, 1000Mbps Ethernet interface (4 × GbE or 2 × 10GbE is extendable)
	Management network interface	1, 1000Mbps Ethernet interface
	MiniSAS interface	Supported(optional)
	Alarm in	4 (optional)
	COM	1
	USB	4
	VGA	1
General	Power supply	Redundant
	Consumption (with HDDs)	Working: ≤ 400(1633 BTU with 24 HDDs; Rated: ≤ 875 W
	Environment temperature	Working: +5 °C to +40 °C (41 °F to 104 °F) Storing: -40 °C to +55 °C (-104 °F to +131 °F)
	Environment humidity	Working: 10% to 80%RH (non-condensing/frozen) Storing: 5% to 90%RH (non-condensing/frozen)
	Chassis	4U (19 inches high)
	Dimensions (W × H × D)	484 x 174 x 684 mm (19.1 x 6.9 x 26.9 in)
	Weight (without HDDs)	≤ 40kg

Typical Application



Available Model

DS-A71024R