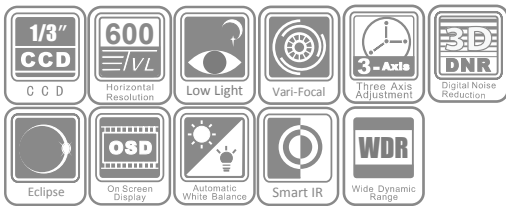


DS-2CC5187P(N)-VF

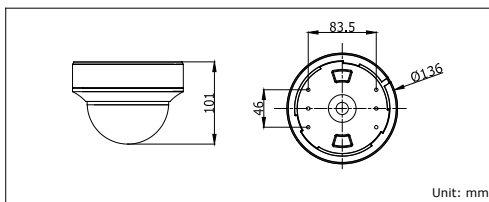
600 TVL Indoor Vari-focal WDR Dome Camera



Key features

- 1/3" SONY CCD
- 600 TVL Horizontal Resolution
- Super low illumination
- 2.8–12mm Vari-focal Lens
- OSD Menu, DNR, Smart IR, Eclipse
- 120 dB Wide Dynamic Range

Dimensions



Accessories



DS-2CC5187P(N)-VF	
Camera	
Image Sensor	1/3" SONY CCD
Signal System	PAL/NTSC
Effective Pixels	PAL: 752 (H) × 582 (V), NTSC: 768 (H) × 494 (V)
Min. Illumination	Color: 0.001 Lux @ (F1.2, AGC ON), 0.0001 Lux @ (F1.2, AGC ON, sensitivity × 512) B/W: 0.0001 Lux @ (F1.2, AGC ON), 0.00001 Lux @ (F1.2, AGC ON, sensitivity × 512) Color: 0.0014 Lux @ (F1.4, AGC ON), 0.00014 Lux @ (F1.4, AGC ON, sensitivity × 512) B/W: 0.00014 Lux @ (F1.4, AGC ON), 0.000014 Lux @ (F1.4, AGC ON, sensitivity × 512)
Shutter speed	PAL: 1/50 s to 1/100,000 s, NTSC: 1/60 s to 1/100,000 s
Lens	2.8 - 12 mm @ F1.4 Angle of view: 80° - 27.2°
Lens Mount	φ14
Angle Adjustment	Pan: 0 - 355°, Tilt: 0 - 180°, Rotation: 0 - 355°
Day & Night	Electronic
Horizontal Resolution	600 TVL (Color), 650 TVL (B/W)
Synchronization	Internal/Power synchronization
Video Output	1Vp-p composite output (75 Ω/BNC) Test monitor out [1Vp-p composite output (75 Ω/BNC), device line]
S/N Ratio	More than 62 dB
Menu	
Camera ID	On/Off (16 letters, position adjustable)
Auto Gain	Low/Middle/High/Off
D/N Mode	Auto /Day/Night
White Balance	Auto trace WB1/Auto trace WB2/Manual/Auto Control
Privacy Masking	On/Off, maximum 12 zones
Motion Detection	On/Off
Back Light	Area/Value/Off
WDR	Value/ Contrast /WD exposure compensation/ Return
Anti-Flicker	On/Off
Language	English/Chinese
Function	SMART IR, Eclipse, Digital Noise Reduction, Sharpness, Brightness, Saturation, Resolution, Electronic image stabilization, Digital Zoom, Mirror, Defect Pixel Correction, auto-iris correction
Scene	Indoor Standard , Indoor Backlight , Outdoor, Low illumination , Customize, IR Standard
General	
Working Temperature/ Humidity	-10 °C - 60 °C (14 °F - 140 °F) Humidity 90% or less (non-condensing)
Power Supply	12 V DC ± 10%
Power Consumption	Max. 4 W
Dimensions	φ 136 × 101 mm (φ 5.35" × 3.98")
Weight	800 g (1.76 lbs)

Available models

PAL: DS-2CC5187P-VF
NTSC: DS-2CC5187N-VF