

DS-TCG406-E-ZK 4 MP Intelligent Entrance ANPR Camera



- 1/1.8" progressive scan CMOS.
- Up to 2688 × 1520 resolution with real-time video.
- 4 built-in high-performance LEDs (integrated white light and IR).
- 2.8 to 12 mm/8 to 32 mm motorized vari-focal lens.
- Supports relay output to control vehicle barrier gate.
- Supports Wiegand, connectable with access control system.
- Supports loop triggering, radar triggering, and video triggering LPR.
- Supports multi-frame LPR, improving LPR rate.
- Supports dirty license plate recognition.
- Equipped with vehicles passing detection algorithm to realize auto switch of barrier gate normally open mode during continuous vehicles passing and improve passing efficiency.
- Supports vehicle type, vehicle color, and vehicle brand recognition.
- Integrated shield, lights, and TF card slot (up to 1 TB).
- Up to 100,000 blocklist and allowlist.
- Supports offline control of barrier gate under allowlist mode.
- Supports a variety of installation methods: pole mounting, wall mounting, pendant mounting, and universal joint installation. Equipped with concealed wire box.
- Adopts entrance and exit dedicated exposure algorithm to adapt to the front/back light and inconsistent front and rear license plates scenes to improve LPR accuracy.

▪ Specification

| Camera | |
|-------------------------|---|
| Max. Resolution | 2688 × 1520 |
| Sensor Type | 1/1.8" Progressive Scan CMOS |
| Min. Illumination | Color: 0.0005 Lux @ (F1.2, AGC ON) B/W: 0.0001 Lux @ (F1.2, AGC ON) 0 Lux with IR |
| Shutter | 1/30 s to 1/100,000 s |
| Day/Night Switch | Supported |
| IR Cut Filter | IR cut filter Blue glass module to reduce ghost phenomenon |
| Lens | |
| Lens Type | 2.8 to 12 mm 8 to 32 mm |
| Aperture | 2.8 to 12 mm: F1.2 to F2.5 8 to 32 mm: F1.7 to F1.73 |
| Focal Length & FoV | 2.8 to 12 mm, horizontal FoV: 114.5° to 41.8°, vertical FoV: 59.3° to 23.6°, diagonal FoV: 141.1° to 48°, 8 to 32 mm, horizontal FoV: 42.5° to 15.1°, vertical FoV: 23.3° to 8.64°, diagonal FoV: 49.6° to 17.3° |
| Focus | Auto, Vari-focal lens, motor-driven lens |
| Supplement Light | |
| Supplement Light Type | IR Light, Warm White Light |
| Supplement Light Range | Video: 2.8 mm to 12 mm: 25 m 8 mm to 32 mm: 50 m Vehicle License Plate: 2.8 mm to 12 mm: 10 m 8 mm to 32 mm: 20 m |
| IR Wavelength | Warm White Light 3000 K, IR Light 850 nm |
| Image | |
| WDR | 140 dB |
| Main Stream | 50 Hz: 25 fps (2688 × 1520, 1920 × 1080, 1280 × 720) 60 Hz: 30 fps (2688 × 1520, 1920 × 1080, 1280 × 720) |
| Sub-Stream | 50 Hz: 25 fps (1920 × 1080, 1280 × 720, 704 × 576, 640 × 480) 60 Hz: 30 fps (1920 × 1080, 1280 × 720, 704 × 480, 640 × 480) |
| Image Settings | Saturation: 0 to 100 Brightness: 0 to 100 Contrast: 0 to 100 Gain: 0 to 100 3D DNR: Off, Normal, and Expert modes are selectable. White balance: White Balance 1 and White Balance 2 are selectable. |
| Image Parameters Switch | Yes |
| WDR Switch | On, Time, Brightness |
| Frame Rate | 25 fps (P)/30 fps (N) |

| Video | |
|---|--|
| ROI | 8 regions respectively for main stream and sub-stream, 6 levels for each region. |
| Video Compression | Main stream: H.265/H.264/MJPEG, Sub-stream: H.265/H.264/MJPEG, |
| H.264 Type | Low profile Medium profile High Profile |
| Video Bit Rate | 32 Kbps to 16 Mbps |
| Bit Rate Type | Constant, Variable |
| Scalable Video Coding (SVC) | H.265 and H.264 encoding |
| Capture Mode | |
| Trigger Type | Video Detection, I/O Coil, Radar Mixed Traffic |
| Picture Type | Scene Picture, Scene Picture + Close-up Picture |
| Scene Mode | Entrance & Exit Toll Gate, Underground Parking Entrance & Exit |
| Capture Type | Strobe Light Mode |
| Capture Parameters | |
| Image Format | JPEG |
| Capture Resolution | 2688 × 1520 |
| License Plate Recognition | Forward, Backward, Bidirection |
| LED Control | Supports automatic light control/time control of LEDs |
| Smart Recognition | ANPR, Motor Vehicle Feature, Vehicle Color Recognition, Enable Vehicle Manufacturer Recognition |
| Capture Picture Overlay | Location, Capture Time, Plate Number, Capture No., Vehicle Color Vehicle Type |
| Entrance and Exit | |
| Barrier Gate Control Mode | By Camera/Platform/Mixed |
| Keep Boom Pole Open for Following Vehicle | Enable/Disable |
| Lock Barrier Gate for Large-Sized Vehicle | Yes |
| Relay Output | 2-ch relay output, supporting opening and closing of barrier gates |
| Barrier Gate Status | None, Barrier Gate Close In Place, Barrier Gate Open In Place, Remote Control Open In Place |
| Allowlist and Blocklist | Up to 100,000 allowlist and blocklist totally Note: Only when the TF card is available, can the function take effect. |
| Network | |
| Network Storage | NAS (NFS, SMB/CIFS), auto network replenishment (ANR) together with high-end Hikvision memory card, memory card encryption and health detection are supported. |
| Protocol | TCP/IP, ICMP, HTTP, HTTPS, FTP Upload Picture, SRTP, DHCP, DNS, DDNS, RTP, RTSP, RTCP, NTP, SNMP, IGMP, QoS, IPv6, UDP, SSL/TLS, WebSocket |
| API | Open Network Video Interface (PROFILE S, PROFILE G, PROFILE T), ISAPI, SDK, ISUP, Otap, Guarding Vision Platform |
| Client | Hik-Connect, Hik-Central, SDKdemo, PMS |
| Web Browser | Plug-in required live view: IE10+ Plug-in free live view: Chrome 57.0+, Firefox 52.0+, Safari 11+ Local service: Chrome 41.0+, Firefox 30.0+ |

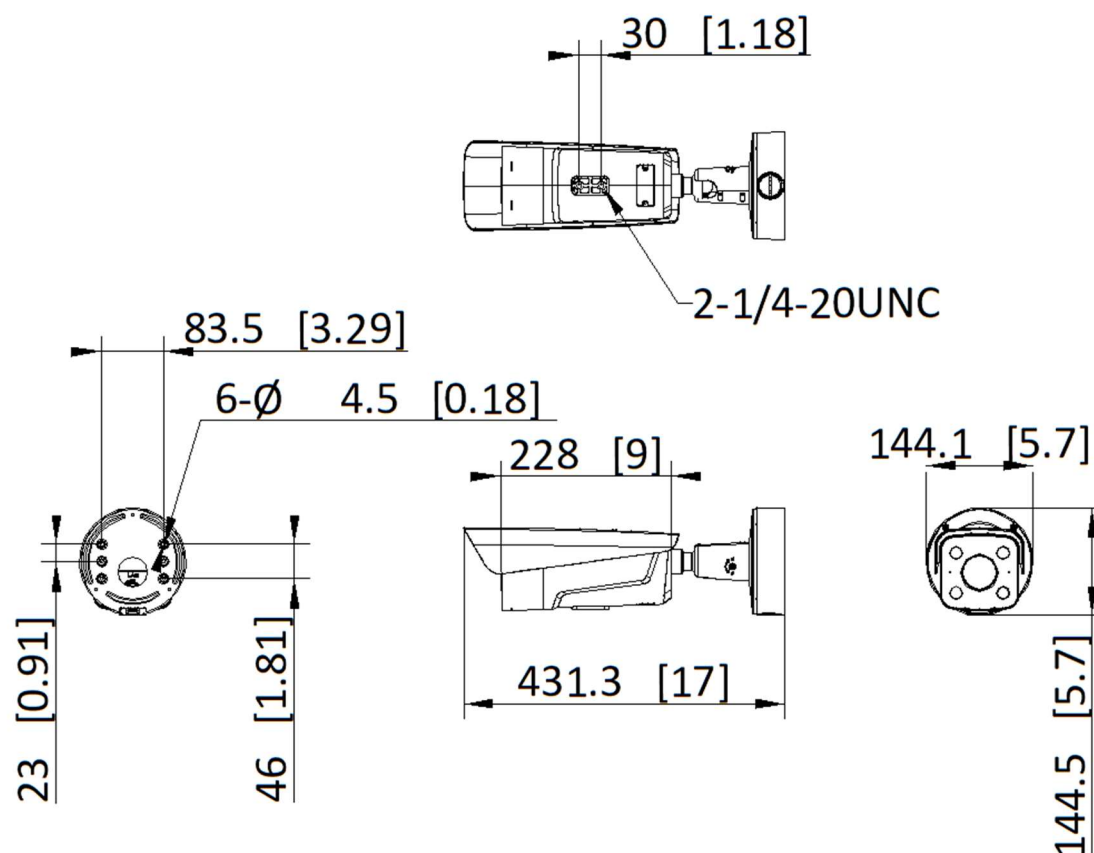
| | |
|----------------------------------|---|
| Security | Password protection, complicated password, HTTPS encryption, watermark, IP address filter, basic and digest authentication for HTTP/HTTPS, WSSE and digest authentication for Open Network Video Interface, RTP/RTSP OVER HTTPS, Control Timeout Settings, Security Audit Log, TLS 1.2 |
| Interface | |
| Audio | 1 input (line in), 1 output (line out) |
| Alarm Input | 3-ch triggered inputs |
| Alarm Output | 1-ch alarm output |
| Wiegand | Supported: CardID 26bit, SHA-1 26bit, Hik 34bit, NEWG 72bit |
| RS-232 | 1-ch RS-485 serial port |
| RS-485 | 1-ch RS-232 serial port |
| Network Interface | 1 RJ45 10M/100M self-adaptive Ethernet port |
| Memory Card Slot | 1 TF card slot, up to 1 TB |
| General | |
| Power Supply | 12 to 24 VDC/PoE (802.3at, 44 V to 57 V), 300 mA to 230 mA |
| Working Consumption | 10 W Max. |
| Dimensions | 415 mm × 145 mm × 145 mm (16.34 × 5.71 × 5.71 inch) |
| Protection | IP67; IK10 |
| Weight | 3.25 kg (7.17 lb.) |
| Weight (with Package) | 4.3 kg (9.48 lb.) |
| Package Size | 465 mm × 200 mm × 198 mm (18.31 × 7.87 × 7.80 inch) |
| Storage Conditions | Temperature: -20 °C to 70 °C (-4 °F to 158 °F) Humidity: 95% (non-condensing) |
| Startup and Operating Conditions | Temperature: -30 °C to 70 °C (-22 °F to 158 °F) Humidity: 95% (non-condensing) |
| Language | 33 languages: English, Russian, Estonian, Bulgarian, Hungarian, Greek, German, Italian, Czech, Slovak, French, Polish, Dutch, Portuguese, Spanish, Romanian, Danish, Swedish, Norwegian, Finnish, Croatian, Slovenian, Serbian, Turkish, Korean, Traditional Chinese, Thai, Vietnamese, Japanese, Latvian, Lithuanian, Portuguese (Brazil), Ukrainian |
| Approval | |
| EMC | CE-EMC (EN 55032: 2015, EN 61000-3-2: 2019, EEN 61000-3-3: 2013 + A1: 2019, EN 50130-4: 2011 + A1: 2014); KC (KN 32: 2015, KN 35: 2015) |
| Security | CB (IEC 62368-1: 2014 + A11); CE-LVD (EN 62368-1: 2014/A11: 2017); BIS (IS 13252 (Part 1): 2010/IEC 60950-1: 2005); |
| Environment | CE-RoHS (2011/65/EU); WEEE (2012/19/EU); Reach (Regulation (EC) No 1907/2006) |
| Protection | IK10 (IEC 62262: 2002), IP67 (IEC 60529-2013) |
| Smart Function | |
| LPR Accuracy | Capture rate > 98% Vehicle moving direction recognition accuracy > 98.5% LPR accuracy > 98% Mistaken capture rate < 2% European and Russian-Speaking Regions: LPR accuracy > 98% Country/Region recognition accuracy > 95% |

| | |
|-------------------------------|---|
| Vehicle Type Recognition | Car/Van/Bus/Truck/Light Truck/SUV_MPV/Pickup/Pedestrian/Motorcycle/Tricycle |
| Vehicle Color | Red, Yellow (including orange, golden), Green, Cyan, Blue, Purple, Pink, Brown, White, Gray (including silver), Black |
| Vehicle Brand | 84 manufacturers: Hyundai, Toyota, KIA, Honda, Volkswagen, Benz, Nissan, Ford, Isuzu, BMW, Chevrolet, Mitsubishi, Renault, Opel, Suzuki, Skoda, Daewoo, Audi, Mazda, GAC HINO, Peugeot, SsangYong, Citroen, Fiat, Scania, MAN, Volvo, Lexus, Seat, Land Rover, Daihatsu, Dongwo, Subaru, Iveco, MINI, JEEP, Porsche, Chery, Dodge, Chrysler, Acura, Alfa Romeo, Great Wall, Infiniti, Smart, Saic Maxus, JAC, Jaguar, GMC, Lincoln, JMC, SAAB, FAW, Yutong, Guangzhou Yunbao, Joylong, Geely, Cadillac, JBC, An'kai, Haima, Foton, King Long, Dongfeng, Geely-Emgrand, Perodua, UD, BYD, Renault Samsung, Proton, HICOM, Malaysia_Unknown 1, Hyundai-Rohens, SsangYong-Old Version, Equus-Old Version, CNHTC, Rolls-Royce, Beiben Truck, Haval, Hino, Kia-Borrego, Chang'an, Alfa, FORO |
| ANPR Supported Country/Region | <p>Middle East:</p> <p>The United Arab Emirates (Abu Dhabi, Ajman, Dubai, Fujairah, Ras Al Khaimah, Sharjah and Umm Al Quwain), Qatar, Iraq, Egypt, Jordan, Kuwait, Saudi Arabia, Pakistan, Oman, Lebanon, Bahrain</p> <p>Africa:</p> <p>Nigeria, Kenya, Ivory Coast , South Africa, Tanzania, Mauritius, Morocco, Tunisia, Sierra Leone, Zambia, Ghana, Zimbabwe, Uganda, Angola, Ethiopia, Senegal, Algeria</p> <p>Asia-Pacific:</p> <p>Australia, New Zealand, Indonesia, Malaysia, Singapore, South Korea, Thailand, Vietnam, the Philippines, Hong Kong, Macao, Taiwan, Myanmar, India, Mongolia, Cambodia, Laos, Bangladesh, Nepal, Sri Lanka</p> <p>America:</p> <p>Canada, Argentina, Chile, Paraguay, Uruguay, El Salvador, Bolivia, Colombia, Brazil, Ecuador, Peru, Mexico, Panama, Costa Rica, Trinidad and Tobago, the Dominican Republic, Guatemala</p> <p>Europe:</p> <p>Turkey, Croatia, Slovakia, Czech Republic, Bulgaria, the Republic of North Macedonia, Hungary, Greece, Poland, France, Netherlands, Switzerland, Spain, the UK, Ireland, Germany, Italy, Austria, Israel, Palestinian, Belgium, Luxembourg, Albania, Kosovo, Serbia, Romania, Montenegro, Denmark, Finland, Sweden, Slovenia, Portugal, Malta, Cyprus, Iceland, Liechtenstein, Bosnia and Herzegovina</p> <p>Russian-Speaking Regions:</p> <p>Azerbaijan, Belarus, Kazakhstan, Lithuania, Georgia, Estonia, Latvia, Russia, Ukraine, Moldova, Uzbekistan, Kyrgyzstan, Armenia, Turkmenistan, Tajikistan</p> |

▪ Available Model



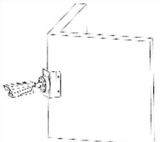
DS-TCG406-E-ZK(12V/PoE)(0832) DS-TCG406-E-ZK(12V/PoE)(2812) DS-TCG406-E-ZK/MPR/12V/PoE/2812 DS-TCG406-E-ZK(12V/PoE/Y)(2812) DS-TCG406-E-ZK(12V/PoE/Y)(0832)

▪ Dimension



▪ Accessory

▪ Optional

| DS-1475ZJ-SUS/BJZ Vertical Pole Mount Bracket | DS-1476ZJ-SUS/BJZ Corner Mount Bracket | L1500-X800-R125 Column Bracket | L700-R125 Pole for LPR camera unit TCGX06 |
|---|---|---|---|
|  |  |  |  |
|  |  |  | |

See Far, Go Further



www.hikvision.com
support@hikvision.com

