

DS-TSC300-44H/HK3 Traffic Signal Controller



Controlled by ARM9 series 32-bit chip, DS-TSC300-44H traffic signal controller provides powerful computing and communication capabilities. Hardware circuit and software adopt modular design. The trimmed embedded Linux operation system with network interface can be maintained and updated remotely.

DS-TSC300-44H/HK3 is mainly made up of controller cabinet, power distribution unit, and equipment cabinet. Controller cabinet consists of master control board, signal light control board, and display panel. These parts are connected via bus.

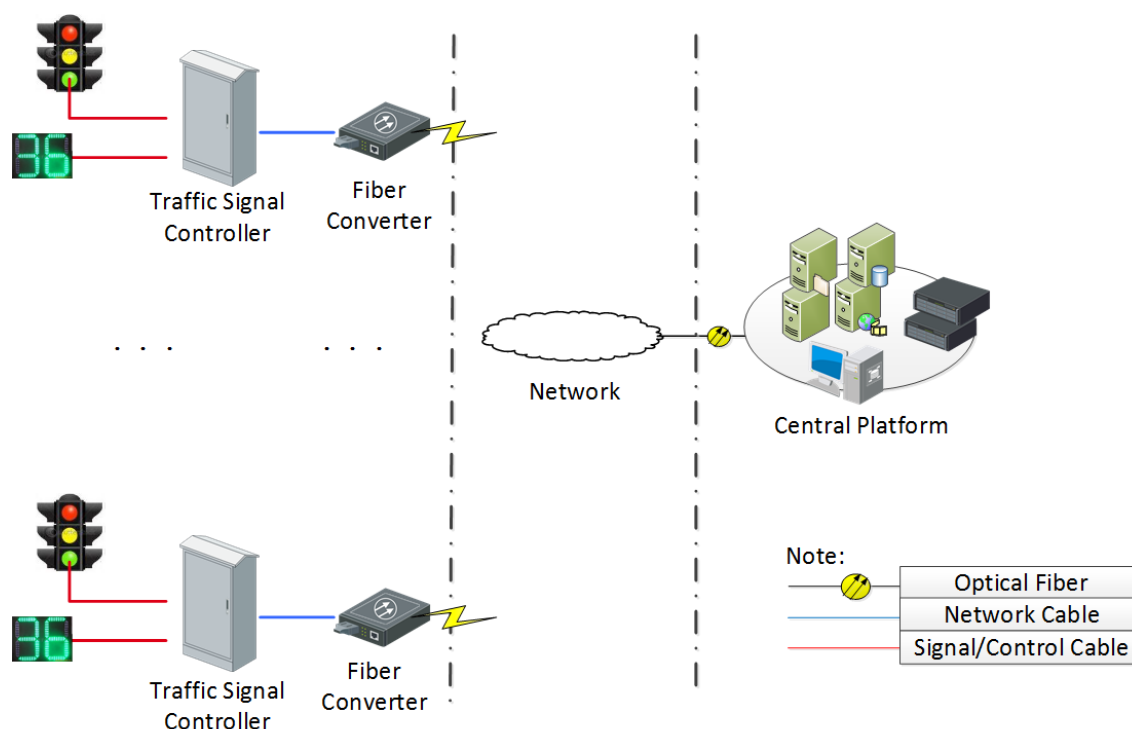
Manual control, remote control, multi-segment control, green wave control, interaction control, and bus priority control are available for remote control.

- Adopts advanced ARM9 series 32-bit chip and provides powerful computing and communication capabilities.
- Modular design for convenient installation and maintenance.
- Adopts silicon-controlled switch to control traffic signal.
- Provides control panel and display to preview status and adjust control pattern.
- Monitors and records working status of external device like communication, signal light, etc.
- Improves security by providing independent yellow flash board which is not software-controllable.

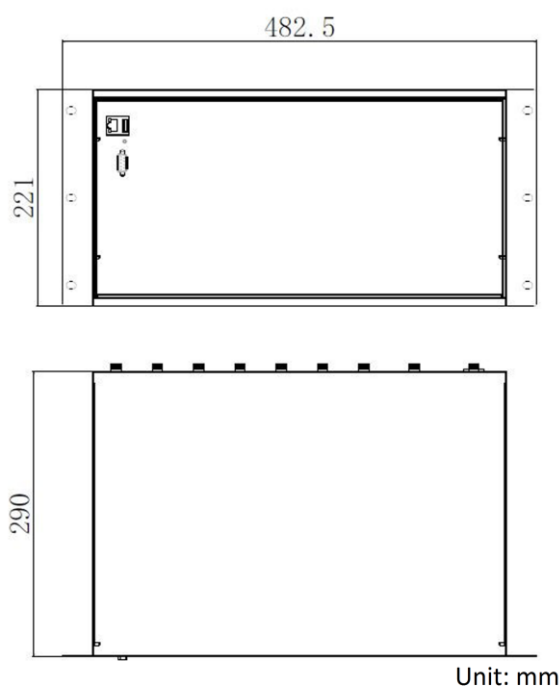
Specification

Model	DS-TSC300-44H/HK3
Signal Light Output	44 × independent signal light output. Load capacity for one channel: 400W
Signal Light Control Board	4
Equipment Cabinet	1
Network	1 × 10M/100M self-adaptive Ethernet interface
Serial Port	2 × RS-232, 2 × RS-485
USB Interface	1
External Input	8 × pedestrian button input
Working Voltage	220 ± 44 VAC/50 ± 2 Hz
Working Temperature	-40 °C to +70 °C (-40 °F to +158 °F)
Working Humidity	45% to 95% (no condensing)
Consumption	< 35 W
Insulation Resistance	> 100 MΩ
IP Code	IP54
Dimensions (W × H × L)	Control Cabinet: 482.5 × 221 × 290 mm (19.0 × 8.7 × 11.4 inch) Equipment Cabinet: 600 × 1084 × 450 mm (23.6 × 42.7 × 17.7 inch)

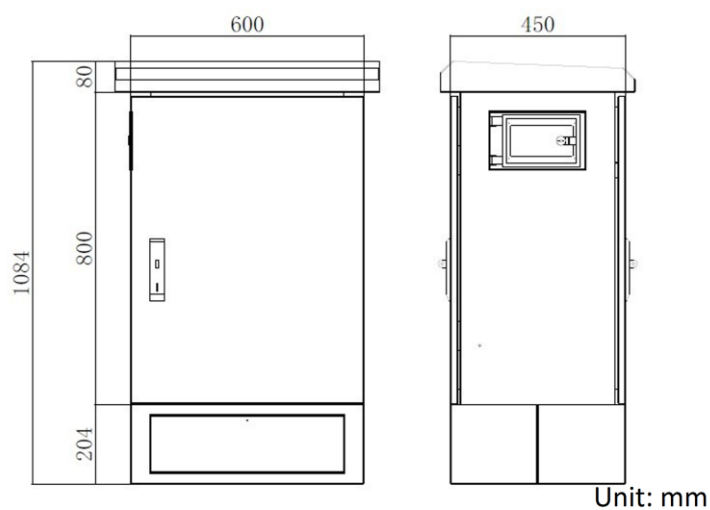
Typical Application



Dimension



Control Cabinet Dimension



Equipment Cabinet Dimension

Headquarters

No.555 Qianmo Road, Binjiang District,
Hangzhou 310051, China
T +86-571-8807-5998
www.hikvision.com



Follow us on social media to get the latest product and solution information.

