

Title:	How to configure Local Recording	Version:	v1.0	Date:	11/09/2018
Product:	DS-PEA Series Emergency Alarm Device			Page:	1 of 6

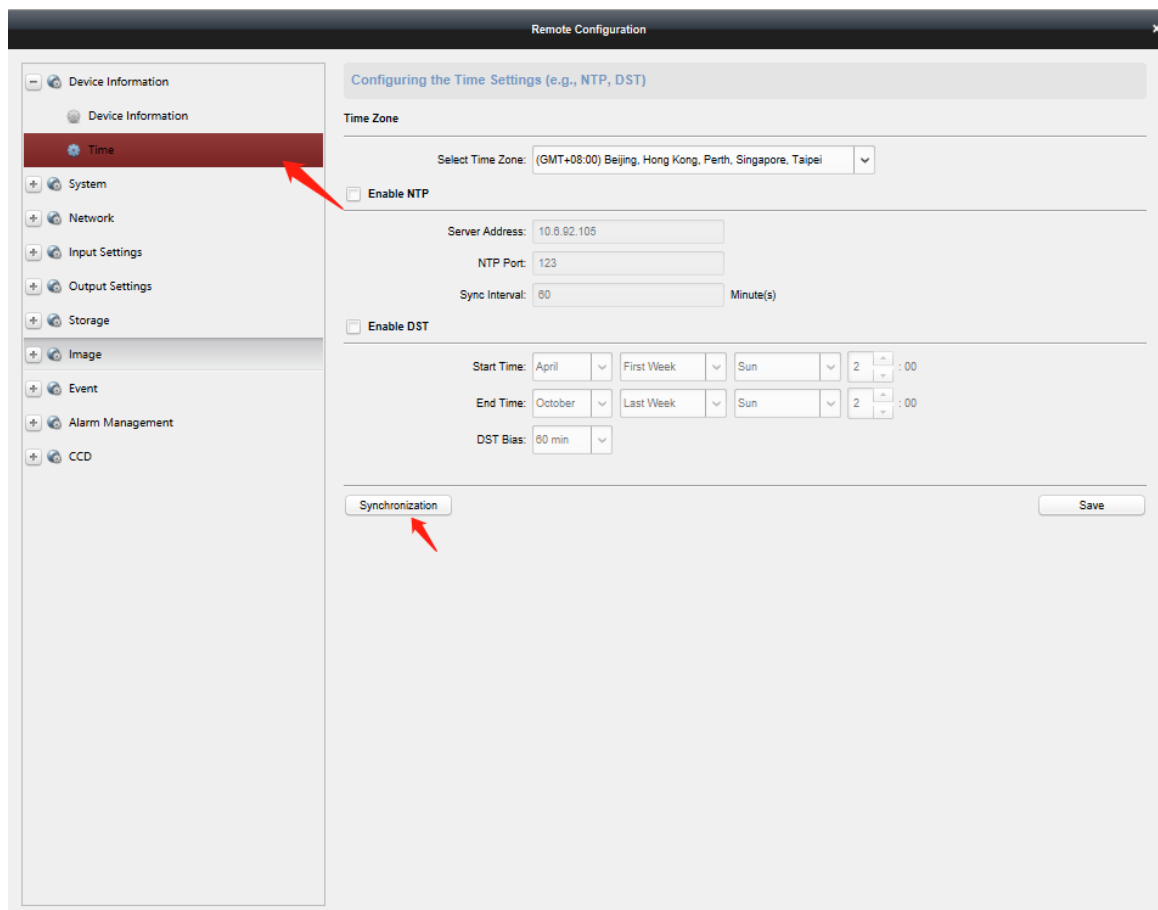
Preparation

1. DS-PEA1-21 Panic Alarm Station
2. SD card
3. iVMS-4200

How to configure Local Recording

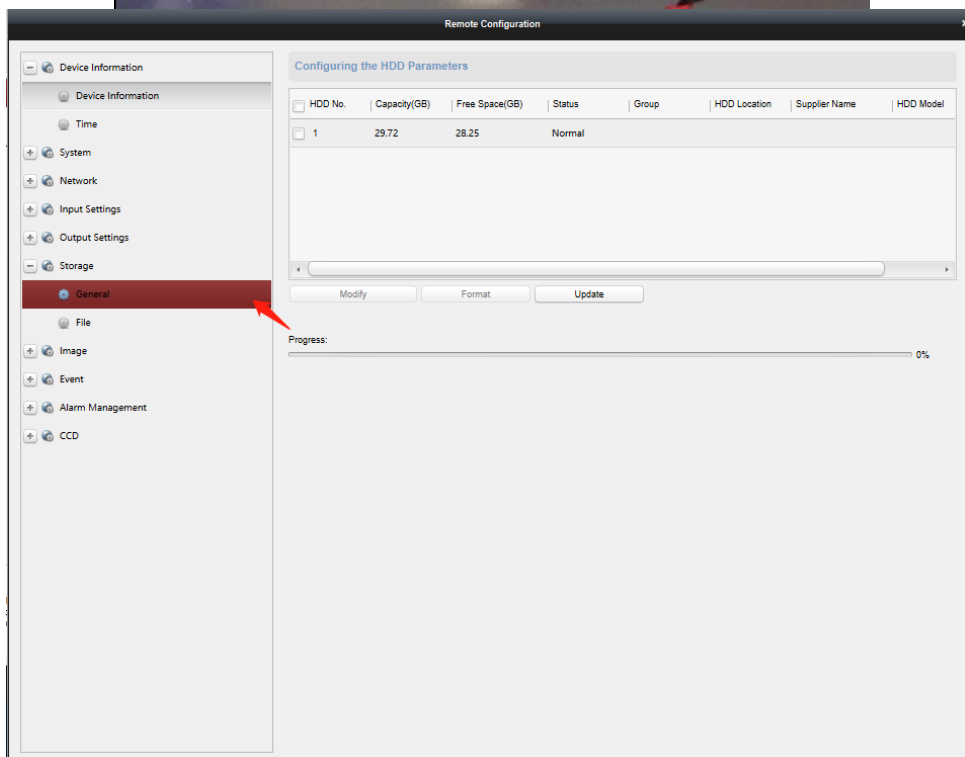
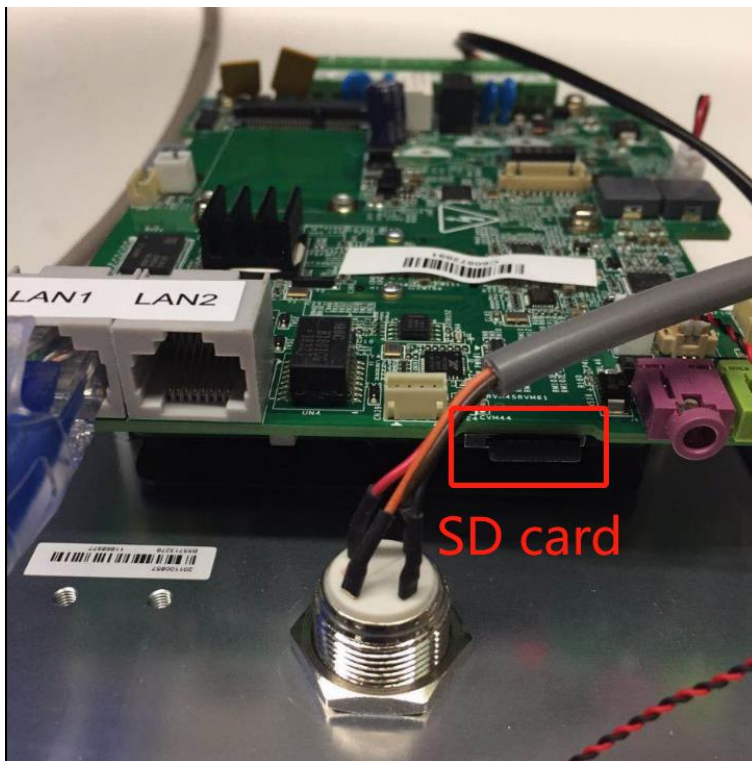
When you want record video when panic button is pressed, you need configure something by iVMS-4200.

1. Synchronization the time First.



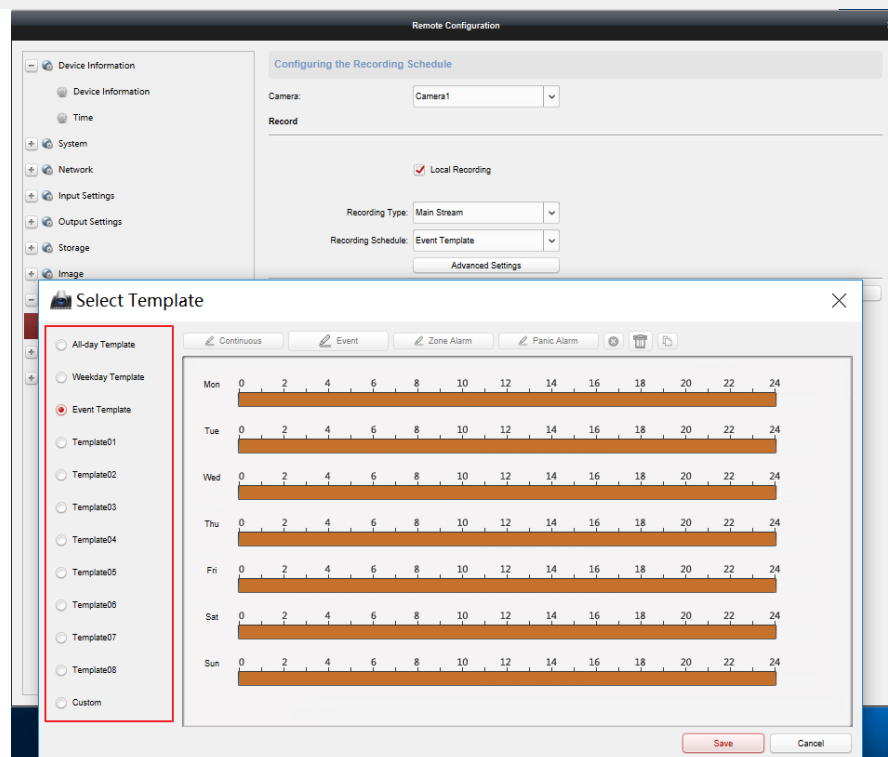
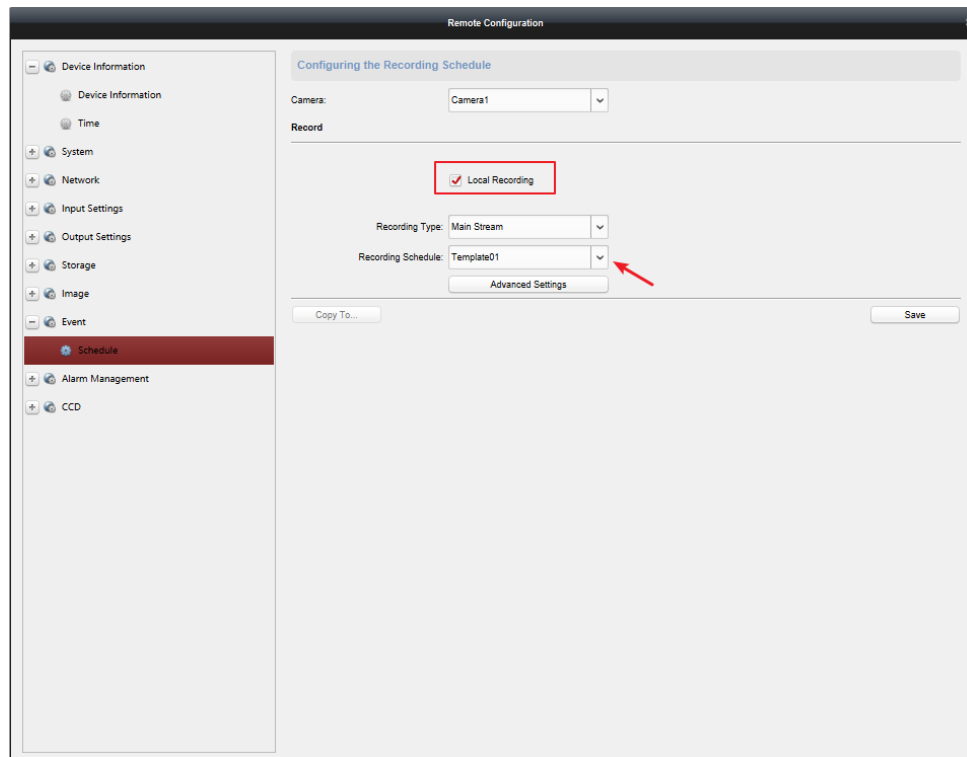
Title:	How to configure Local Recording	Version:	v1.0	Date:	11/09/2018
Product:	DS-PEA Series Emergency Alarm Device			Page:	2 of 6

2. Insert SD card and check the storage of SD card, if need, format the SD card.



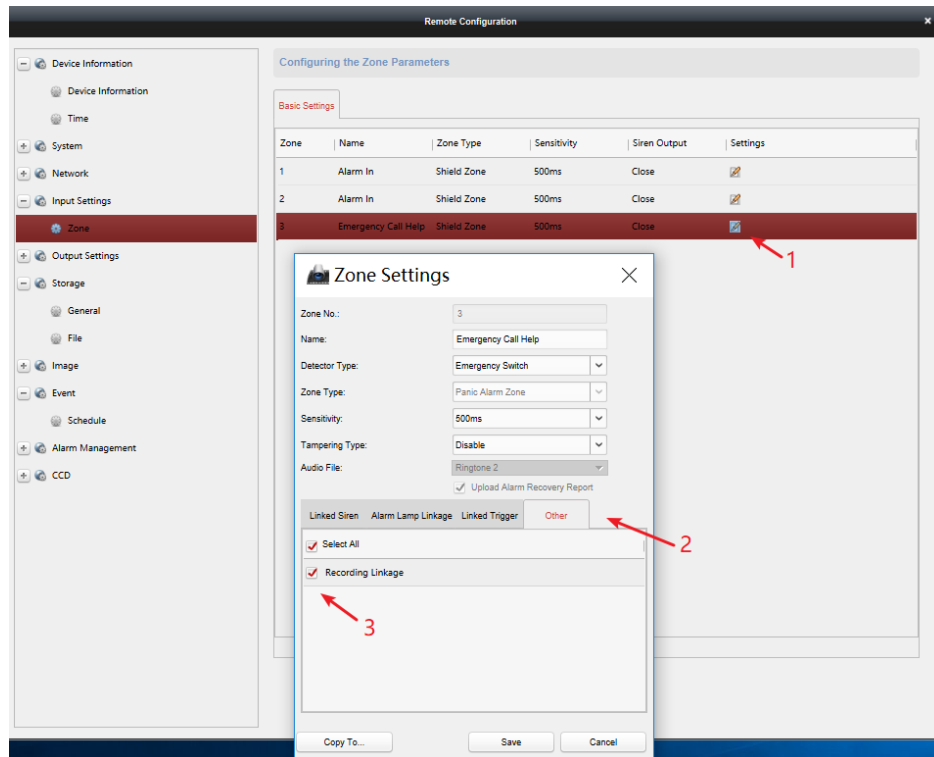
Title:	How to configure Local Recording	Version:	v1.0	Date:	11/09/2018
Product:	DS-PEA Series Emergency Alarm Device			Page:	3 of 6

3. Select the Local Recording and configure Recording Schedule.

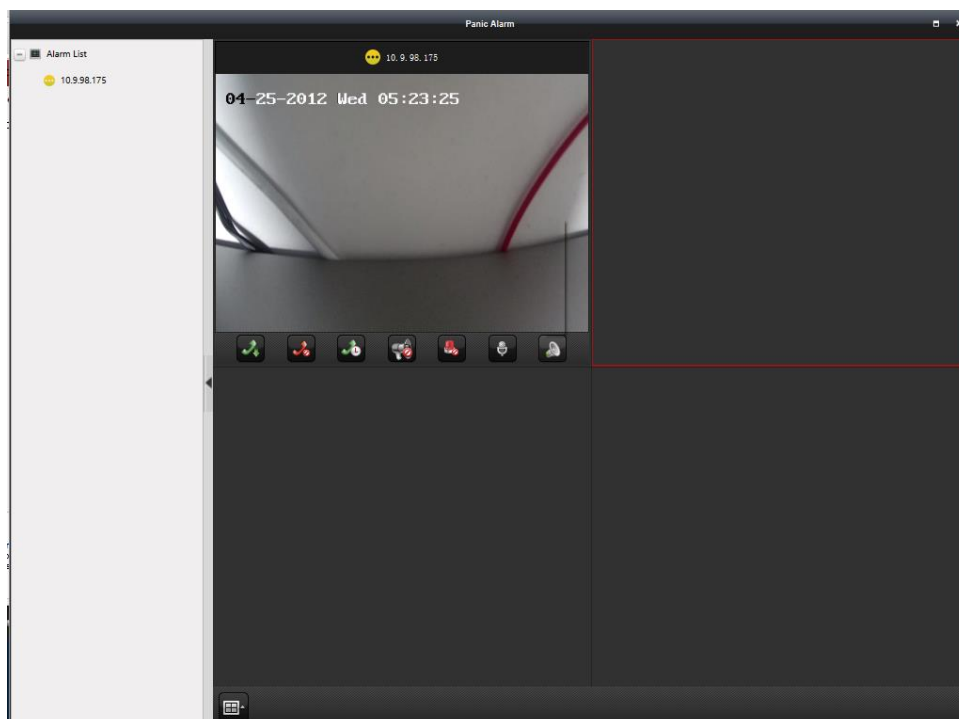


Title:	How to configure Local Recording	Version:	v1.0	Date:	11/09/2018
Product:	DS-PEA Series Emergency Alarm Device			Page:	4 of 6

4. Configure zone setting, select Zone Setting—Other---Recording Linkage.



5. Press on the panic button, 4200 will trigger Pop-out image. Answer the calling.



Title:	How to configure Local Recording	Version:	v1.0	Date:	11/09/2018
Product:	DS-PEA Series Emergency Alarm Device			Page:	5 of 6

6. After ending the calling, you can see video in playback interface or download video in Storage—File—All types.

The screenshot displays the Hikvision IVMS-4200 software interface. The top menu bar includes File, System, View, Tool, and Help. The main window is divided into several sections:

- Left Panel:** A sidebar with a search bar and a list of cameras. The camera 'Camera1_10.9.98.175' is selected and highlighted with a red arrow labeled '2'.
- Top Bar:** Contains tabs for Control Panel, Main View, Remote Playback (active), Device Management, and Event Management. A red arrow labeled '1' points to the Remote Playback tab.
- Central Area:** Displays a video playback window for 'Window01: Camera1_10.9.98.175' showing a timestamp of '11-08-2018 Thu 19:36:24'. Below the video is a timeline and playback controls.
- Right Panel:** A 'Filter' section showing a list of events. The event '2018-11-08 19:36:14' is selected and highlighted with a red arrow labeled '3'.
- Bottom Panel:** A 'Remote Configuration' window with a left sidebar containing categories like Device Information, System, Network, Input Settings, Output Settings, Storage, General, File, Image, Event, Schedule, Alarm Management, and CCD. The 'File' category is selected. The main area of this window is titled 'Searching and Viewing the Record Files' and contains a table of recorded files.

The 'Searching and Viewing the Record Files' table lists the following data:

Index	File Name	Size	Start Time	End Time
1	ch01_000000000000000213	27,358KB	2018-11-08 19:31:55	2018-11-08 19:33:00
2	ch01_000000000000000313	15,215KB	2018-11-08 19:33:36	2018-11-08 19:34:09
3	ch01_000000000000000413	10,991KB	2018-11-08 19:36:14	2018-11-08 19:36:36

A 'Download' button is located at the bottom right of the Remote Configuration window.



Title:	How to configure Local Recording	Version:	v1.0	Date:	11/09/2018
Product:	DS-PEA Series Emergency Alarm Device			Page:	6 of 6

First Choice for Security Professionals
***HIKVISION* Technical Support**