



**How to display the indoor station screen on a computer**

<b>Title:</b>	How to display the indoor station screen on a computer	<b>Version:</b>	v1.0	<b>Date:</b>	05/06/2025
<b>Product:</b>	Video intercom	<b>Page:</b>	1 of 3		



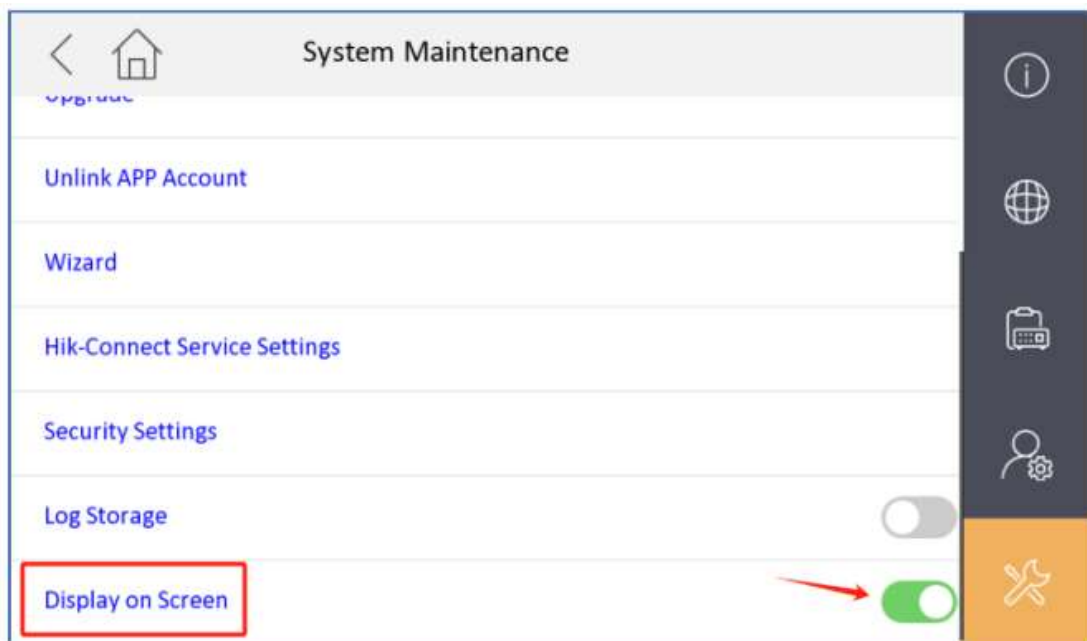
## Preparation

1. Indoor station (Using DS-KH6320-WTE1 V2.2.100\_250114 or above as example).
2. VLC media player.

Linux based indoor stations (KH6 and KH8 series) support display on screen function. After enable, you can live view real time indoor station screen with VLC media player through RTSP protocol.

## Enable Display on screen option:

- Enter **Settings** -> **Advanced Settings** -> **Configuration** -> **System Maintenance** menu.



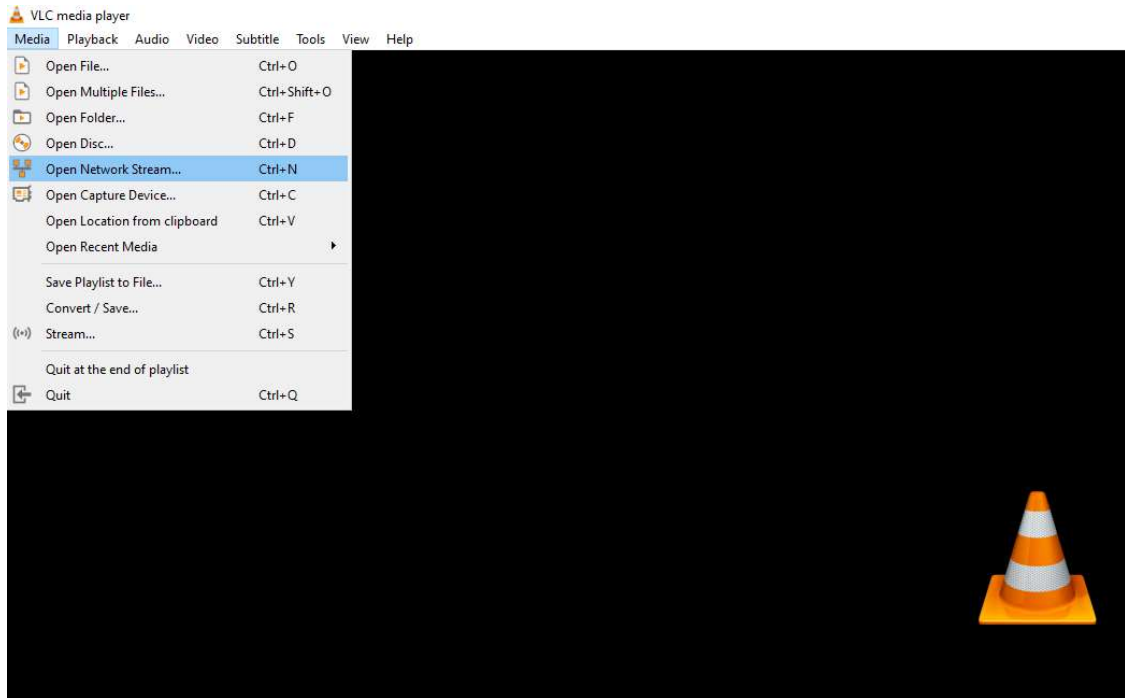
- Enable **Display on Screen** function.

**Note:** An administrator password is required to enable this option. The option is disabled by default.

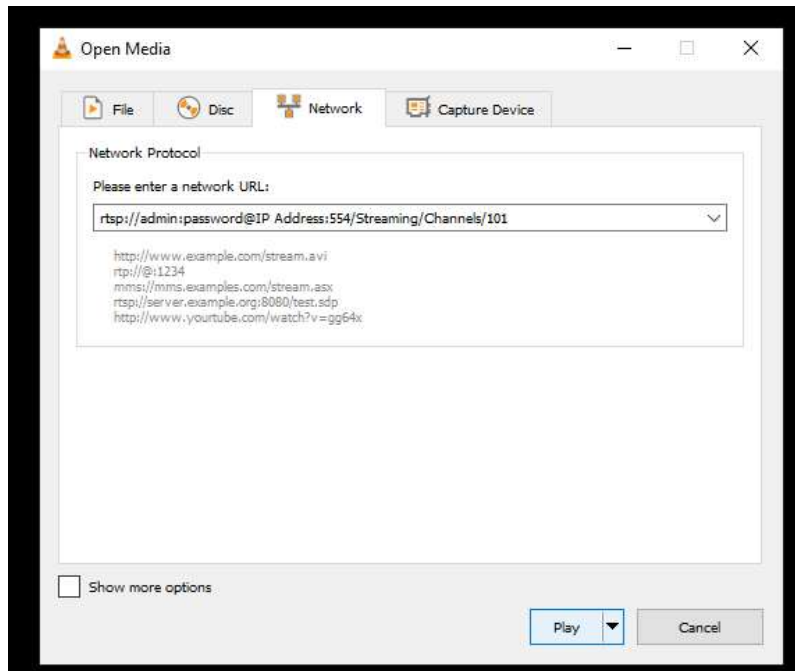
<b>Title:</b>	How to display the indoor station screen on a computer	<b>Version:</b>	v1.0	<b>Date:</b>	05/06/2025
<b>Product:</b>	Video intercom	<b>Page:</b>	2 of 3		



- Open VLC media player and select **Open Network Stream** option.



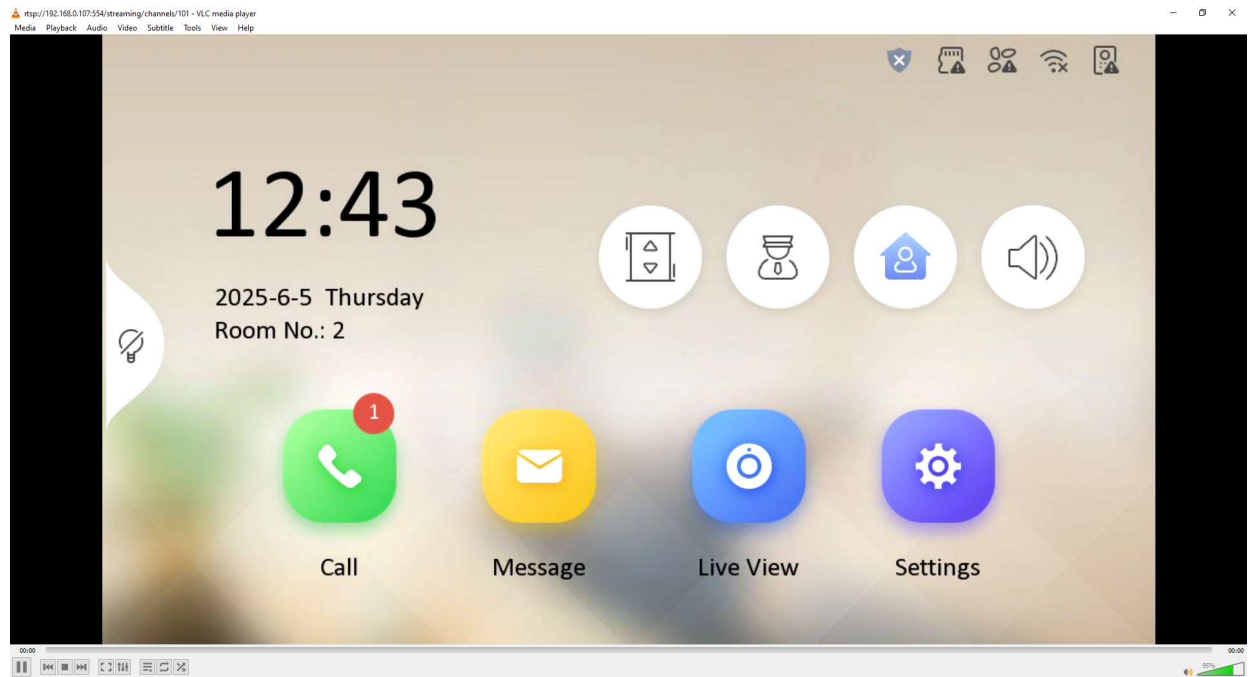
- Enter ***rtsp://admin:password@IP Address:554/Streaming/Channels/101***



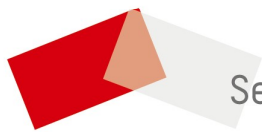
<b>Title:</b>	How to display the indoor station screen on a computer	<b>Version:</b>	v1.0	<b>Date:</b>	05/06/2025
<b>Product:</b>	Video intercom	<b>Page:</b>	3 of 3		



➤ Select **Play**.



**Note:** The function will occupy high performance of device, we recommend to use only for training or capturing the screenshot for making marketing / how-to documents. The door station video stream is encrypted in SDK protocol, we can't see it in the VLC player in this way.



See Far, Go Further