

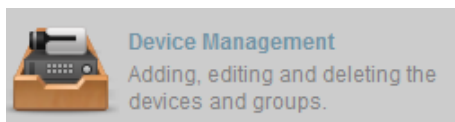
DS-K2600 Open Door with Card

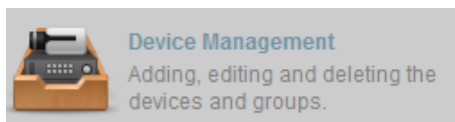
1. Operation Process

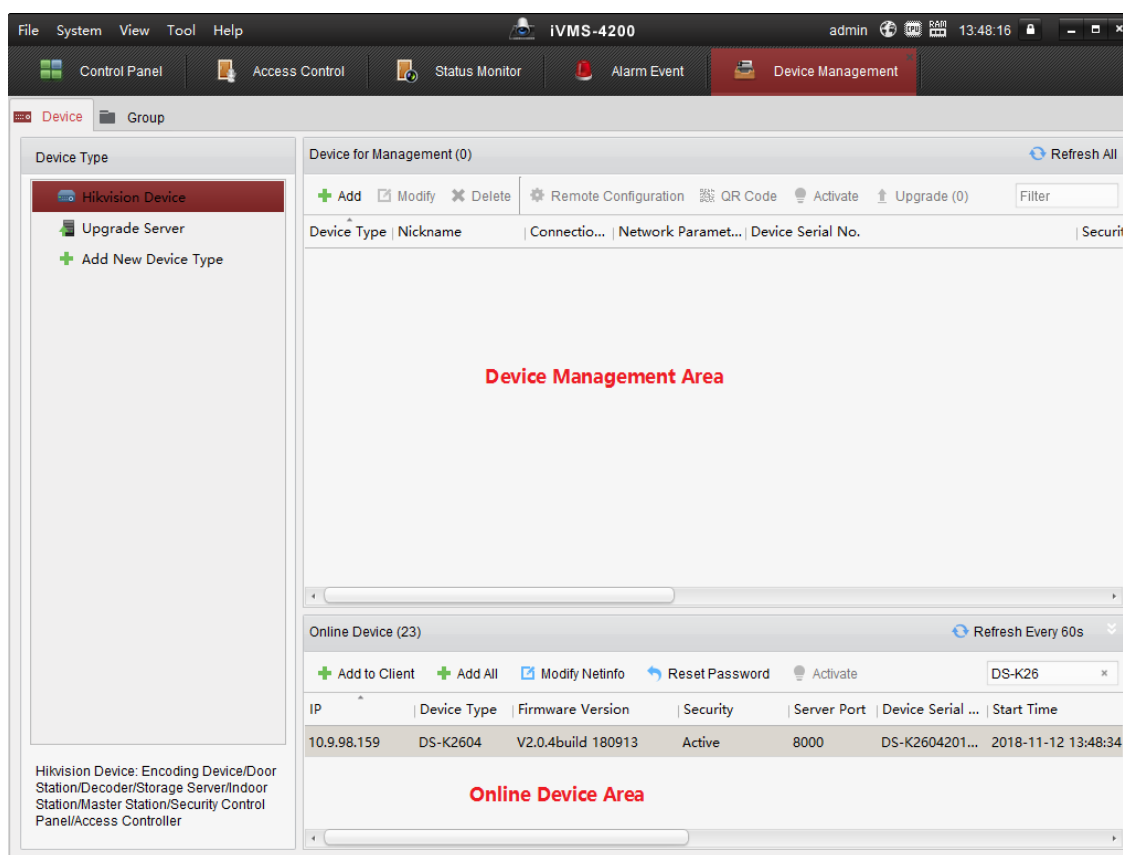
- 1) Add device to client software
- 2) User management(Organization management)
- 3) Apply permission to device

2. Operation Steps:

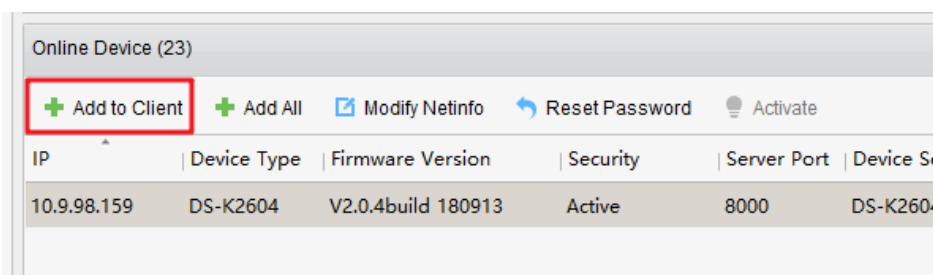
- 1) Add device on client software



a) On control panel, select , enter Device Management module.



b) Select device from Online Device Area and Click Add to Client button. Input device IP address, user name and activation password



DS-K2600 Open Door with Card

Add

Adding Mode:

IP/Domain IP Segment Cloud P2P Do... EHome Serial Port

IP Server HIDDNS Batch Import

Add Offline Device

Nickname:

Address:

Port:

User Name:

Password:

Synchronize Device Time

Export to Group

Set the device name as the group name and add all the channels connected to the device to the group.

Add **Cancel**

c) Check whether all doors are added to access control point, if not please import manually (picture 2)

File System View Tool Help iVMS-4200 admin

Control Panel Device Management

Device **Group**

Resource

Search...

K2604 Access Controller

- Encoding Channel
- Alarm Input
- Zone
- Access Control Point**
- Lane Controller
- Alarm Output

Access Control Point of Group K2604 Access Controller(4)

+ Import + Modify - Delete Remote Configuration Filter

Nickname	IP	Device Serial No.
Door1_K2604 Access Controller	10.9.98.159	DS-K26042018
Door2_K2604 Access Controller	10.9.98.159	DS-K26042018
Door3_K2604 Access Controller	10.9.98.159	DS-K26042018
Door4_K2604 Access Controller	10.9.98.159	DS-K26042018

File System View Tool Help iVMS-4200 admin 14:33:11

Control Panel Device Management

Device **Group**

Resource

Search...

+ Import + Modify - Delete Remote Configuration Filter

Nickname IP Device Serial No.

Add Group

Group Name:

Create Group by Device Name

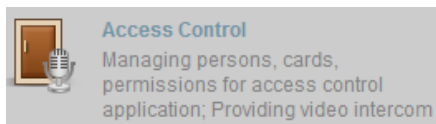
Search...

Nickname	Device Type
<input checked="" type="checkbox"/> K2604 Access Controller	Access Controller

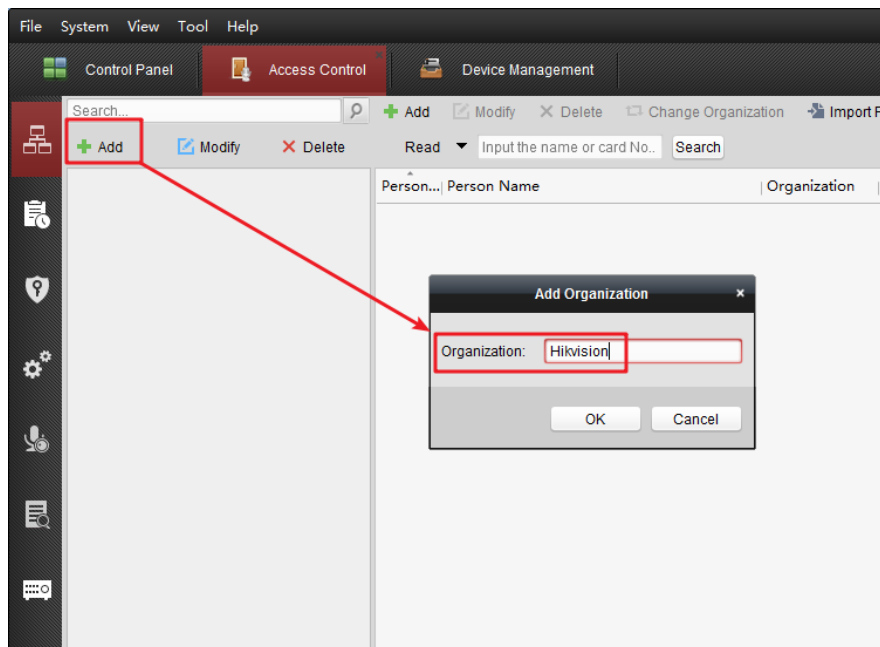
OK **Cancel**

DS-K2600 Open Door with Card

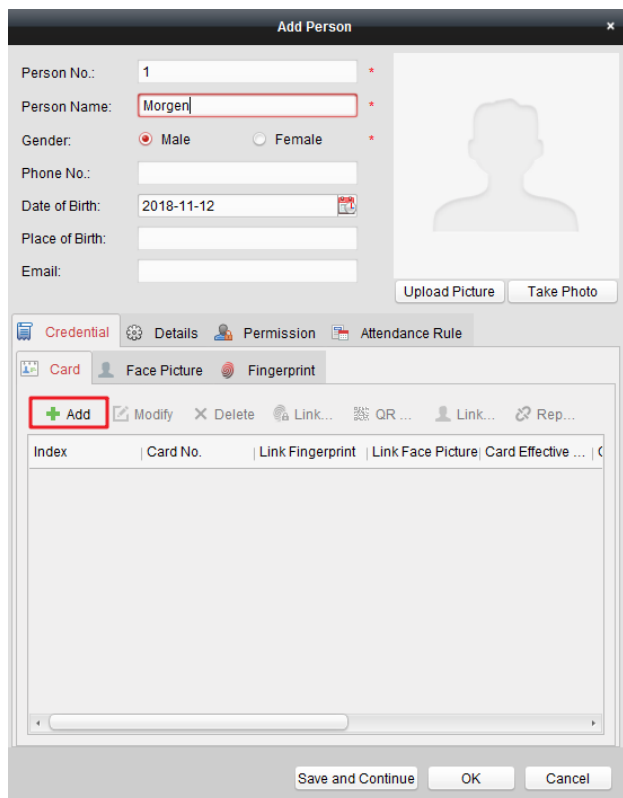
2) User management(Organization management)



- a) Enter module person management, click add on the left side to add organization, after input name click ok.



- b) Select the organization on the left then click Add on the right, after input related information, click OK to save. Person Name is required fields, click add button in the middle to add card number.



DS-K2600 Open Door with Card

- c) There are 3 methods to add card: add from access control device, add from USB card enroller and input manually. After add card, click OK to save it.

The 'Add Card' dialog box is titled 'Add Card' and has a close button (X) in the top right corner. It is divided into two tabs: 'General Card' and 'Smart Card'. The 'General Card' tab is active. The fields include: 'Card Type' (Normal Card), 'Remark' (empty), 'Card Password' (Password), and 'Effective Period' (From 2018-11-12 14:58:47 To 2028-11-12 14:58:47). There are radio buttons for 'Access Contro...' (selected), 'Card Enrollme...' (with a 'Set Card Enrollment Station' button), and 'Manually Input' (with an 'Enter' button). A 'Read' button is also present. At the bottom, there is a table with columns: Index, Card No., Card Type, Card Class, and Card Effect. Below the table are 'OK' and 'Cancel' buttons.

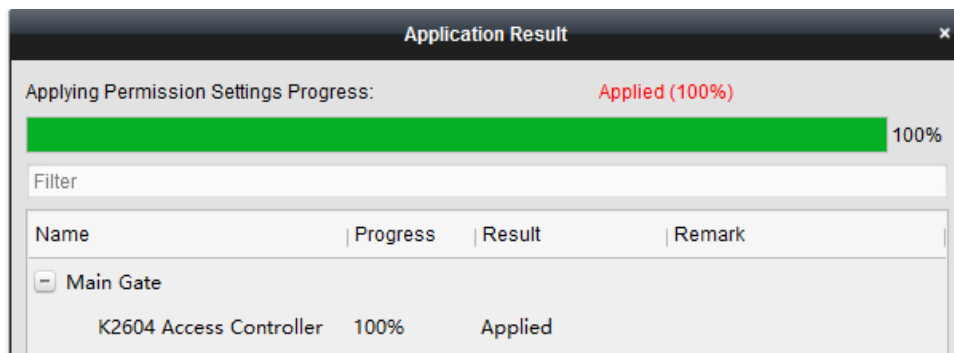
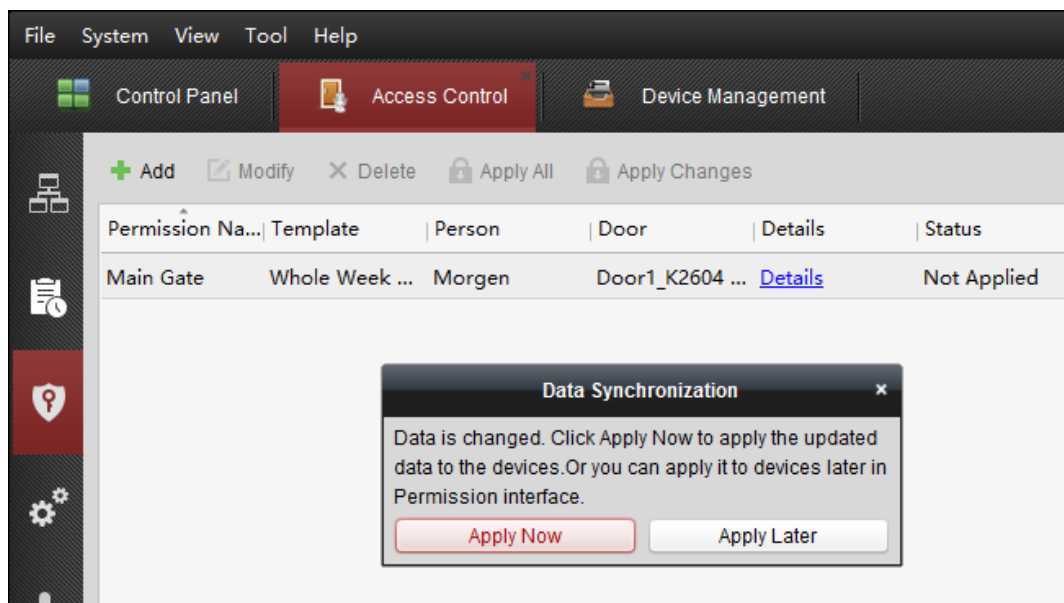
3) Apply permission to device

- a) Enter permission menu and click add, input permission name, add device and user to right side, click ok.

The screenshot shows the 'Add Permission' dialog box in the software interface. The main window has a menu bar (File, System, View, Tool, Help) and a toolbar with 'Add', 'Modify', 'Delete', 'Apply All', and 'Apply Changes'. The 'Add' button is highlighted with a red box. The 'Add Permission' dialog box has the following fields: 'Permission Name' (Main Gate), 'Template' (Whole Week Template), and 'Add Template' button. It is divided into two main sections: 'Person' and 'Access Control Point/Device'. The 'Person' section has a search bar and a list of users: Hikvision and Morgen. The 'Morgen' user is selected with a red checkmark and a red arrow points to the right arrow button. The 'Access Control Point/Device' section has a search bar and a list of devices: K2604 Access Controller, Door1_K2604 Access Controller, Door2_K2604 Access Controller, Door3_K2604 Access Controller, and Door4_K2604 Access Controller. The 'K2604 Access Controller' is selected with a red checkmark and a red arrow points to the right arrow button. The 'Selected Personnel(1)' section shows 'Morgen Hikvision' and the 'Selected Door/Device(4)' section shows 'Door1... K2604 Access Controller', 'Door2... K2604 Access Controller', 'Door3... K2604 Access Controller', and 'Door4... K2604 Access Controller'. At the bottom are 'OK' and 'Cancel' buttons.

DS-K2600 Open Door with Card

b) After that, it will prompt automatically to synchronize, click Apply Now and it will prompt applied.



Suitable Models:

Model	
DS-K2601	Single Door Access Controller
DS-K2602	Two Door Access Controller
DS-K2604	Four Door Access Controller