

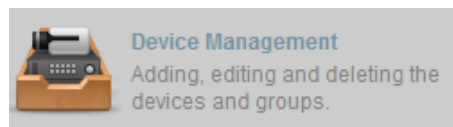
## DS-K2600 Open Door with Card or Password


### 1. Operation Process

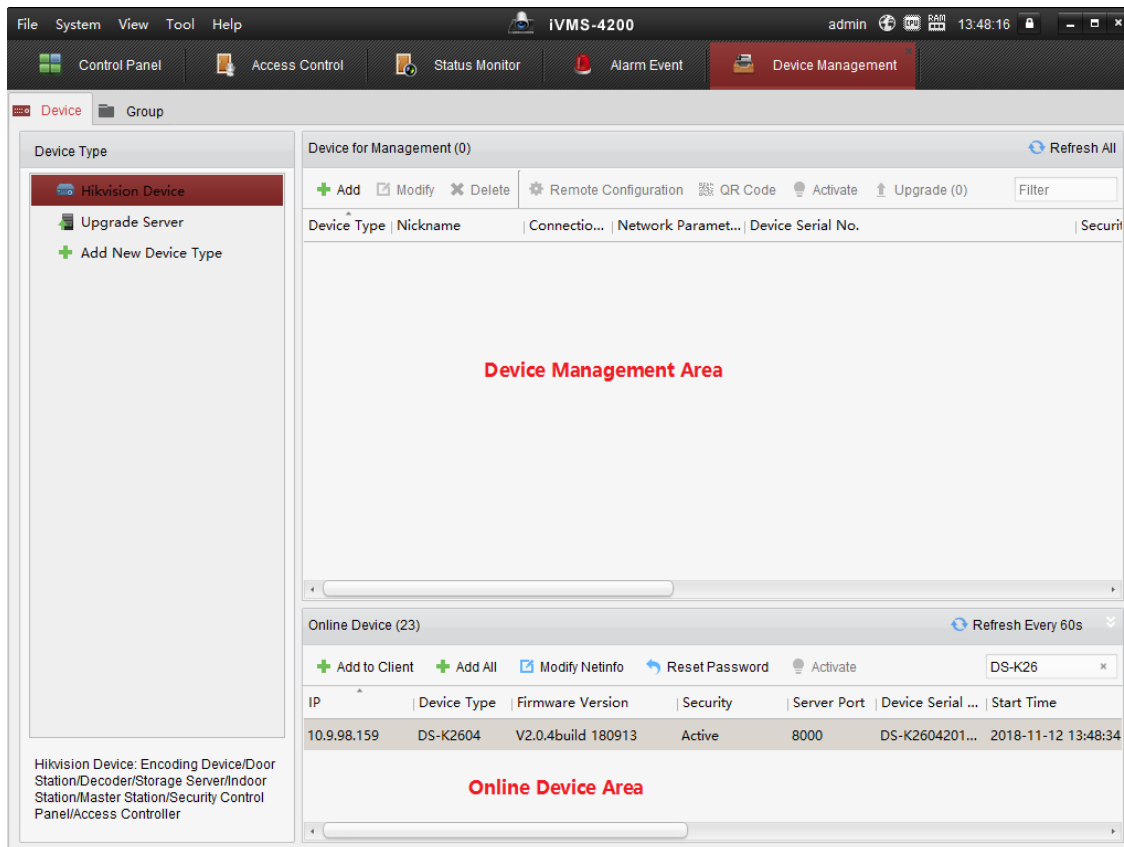
- 1) Add device to client software
- 2) User management(Organization management)
- 3) Apply permission to device
- 4) Add authentication password
- 5) Change reader verify mode
- 6) Test

### 2. Operation Steps:

- 1) Add device on client software



- a) On control panel, select , enter Device Management module.



- b) Select device from Online Device Area and Click Add to Client button. Input device IP address, user name and activation password

# DS-K2600 Open Door with Card or Password

Online Device (23)

**+ Add to Client** + Add All Modify Netinfo Reset Password Activate

IP	Device Type	Firmware Version	Security	Server Port	Device Se
10.9.98.159	DS-K2604	V2.0.4build 180913	Active	8000	DS-K2604

**Add**

Adding Mode:

IP/Domain  IP Segment  Cloud P2P Do...  EHome  Serial Port

IP Server  HIDDNS  Batch Import

Add Offline Device

Nickname:

Address:

Port:

User Name:

Password:

Synchronize Device Time

Export to Group

Set the device name as the group name and add all the channels connected to the device to the group.

Add Cancel

c) Check whether all doors are added to access control point, if not please import manually (picture 2)

File System View Tool Help ivMS-4200 admin

Control Panel Device Management

Device **Group**

Resource

Search...

K2604 Access Controller

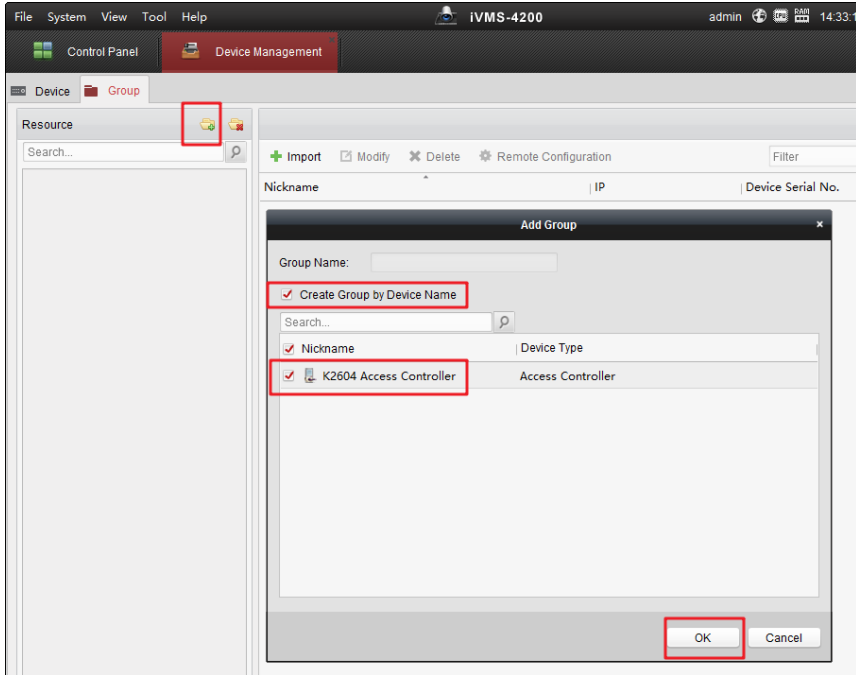
- Encoding Channel
- Alarm Input
- Zone
- Access Control Point**
- Lane Controller
- Alarm Output

Access Control Point of Group K2604 Access Controller(4)

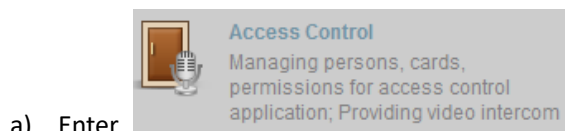
+ Import - Modify - Delete Remote Configuration Filter

Nickname	IP	Device Serial N
Door1_K2604 Access Controller	10.9.98.159	DS-K26042018
Door2_K2604 Access Controller	10.9.98.159	DS-K26042018
Door3_K2604 Access Controller	10.9.98.159	DS-K26042018
Door4_K2604 Access Controller	10.9.98.159	DS-K26042018

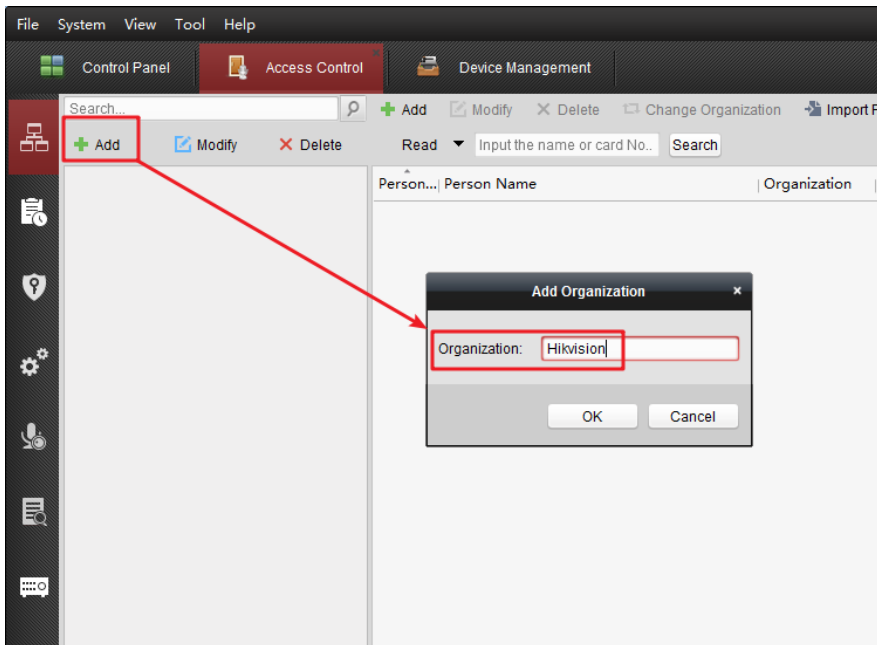
## DS-K2600 Open Door with Card or Password



### 2) User management(Organization management)



- a) Enter module person management, click add on the left side to add organization, after input name click ok.



- b) Select the organization on the left then click Add on the right, after input related information, click OK to save. Person Name is required fields, click add button in the middle to add card number.

## DS-K2600 Open Door with Card or Password

Person No.: 1

Person Name: Morgen

Gender:  Male  Female

Phone No.:

Date of Birth: 2018-11-12

Place of Birth:

Email:

Upload Picture Take Photo

Credential Details Permission Attendance Rule

Card Face Picture Fingerprint

+ Add Modify Delete Link... QR ... Link... Rep...

Index	Card No.	Link Fingerprint	Link Face Picture	Card Effective ...
-------	----------	------------------	-------------------	--------------------

Save and Continue OK Cancel

- c) There are 3 methods to add card: add from access control device, add from USB card enroller and input manually. After add card, click OK to save it.

General Card Smart Card

Card Type: Normal Card

Remark:

Card Password: Password

Effective Period: From 2018-11-12 14:58:47 To 2028-11-12 14:58:47

Access Contro...  Card Enrollme...  Manually Input

Read Enter

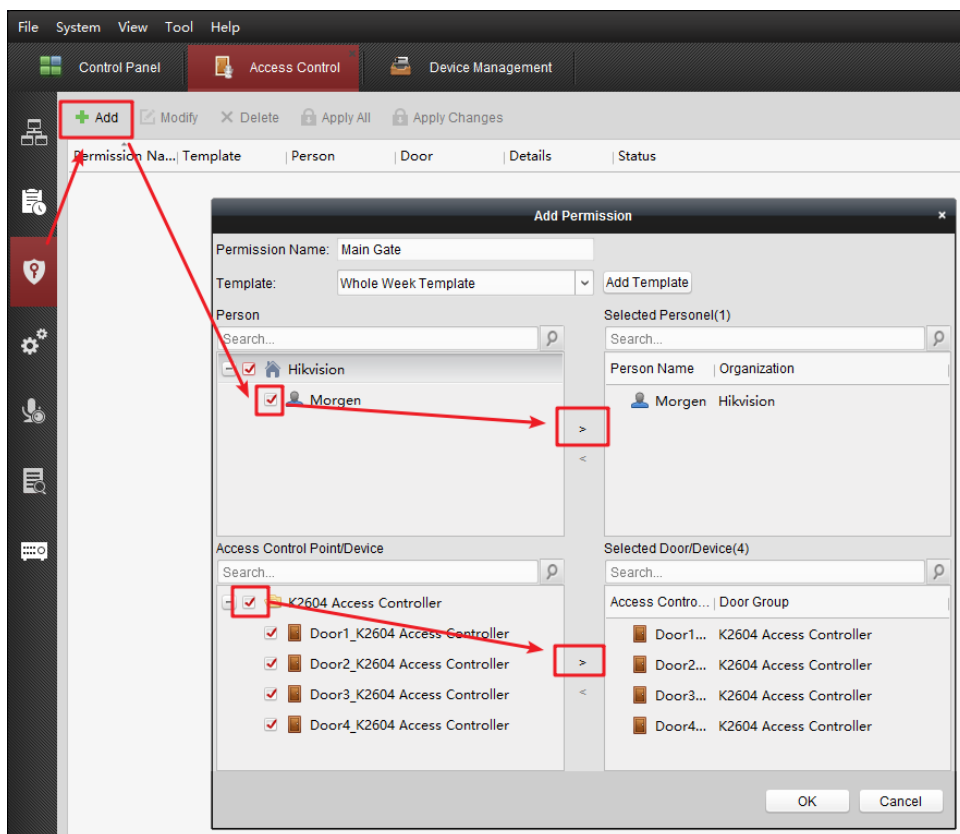
Index	Card No.	Card Type	Card Class	Card Effic
-------	----------	-----------	------------	------------

OK Cancel

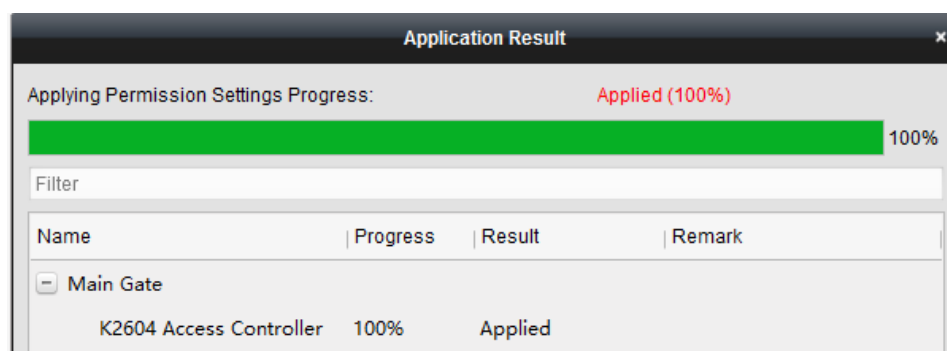
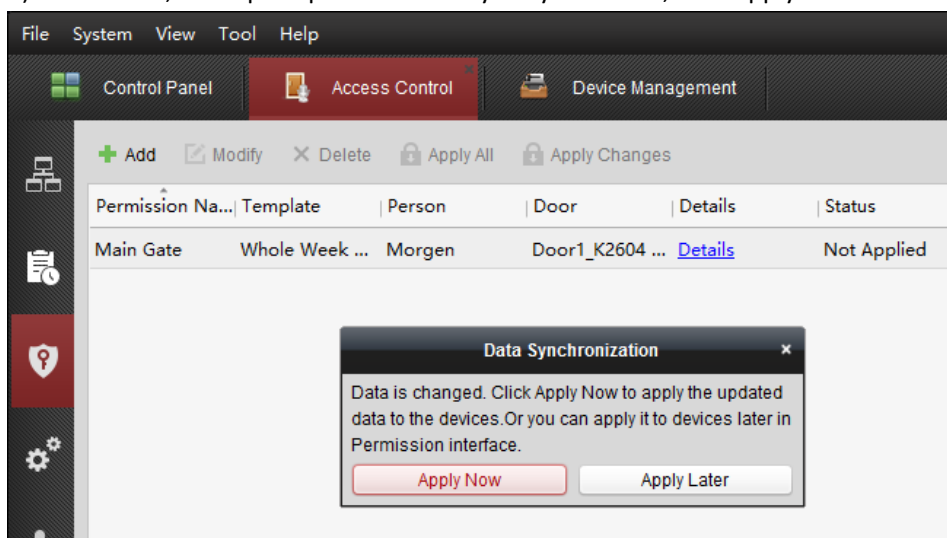
### 3) Apply permission to device

- a) Enter permission menu and click add, input permission name, add device and user to right side, click ok.

# DS-K2600 Open Door with Card or Password



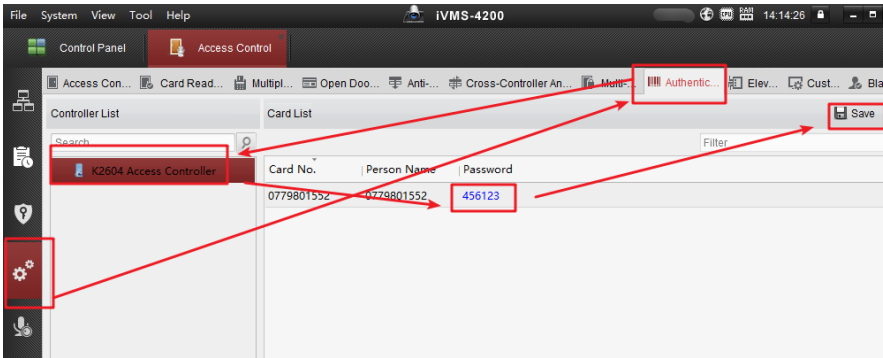
b) After that, it will prompt automatically to synchronize, click Apply Now and it will prompt applied.



## DS-K2600 Open Door with Card or Password

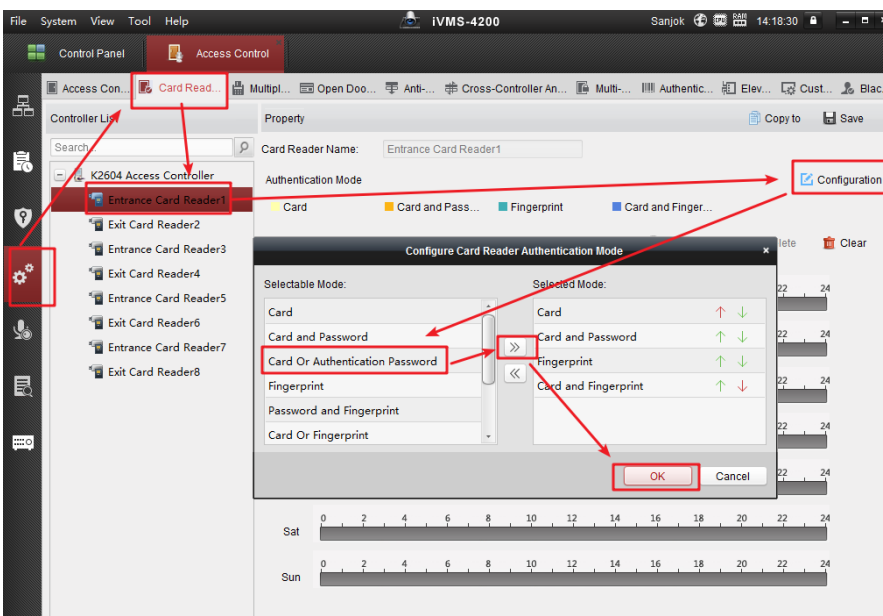
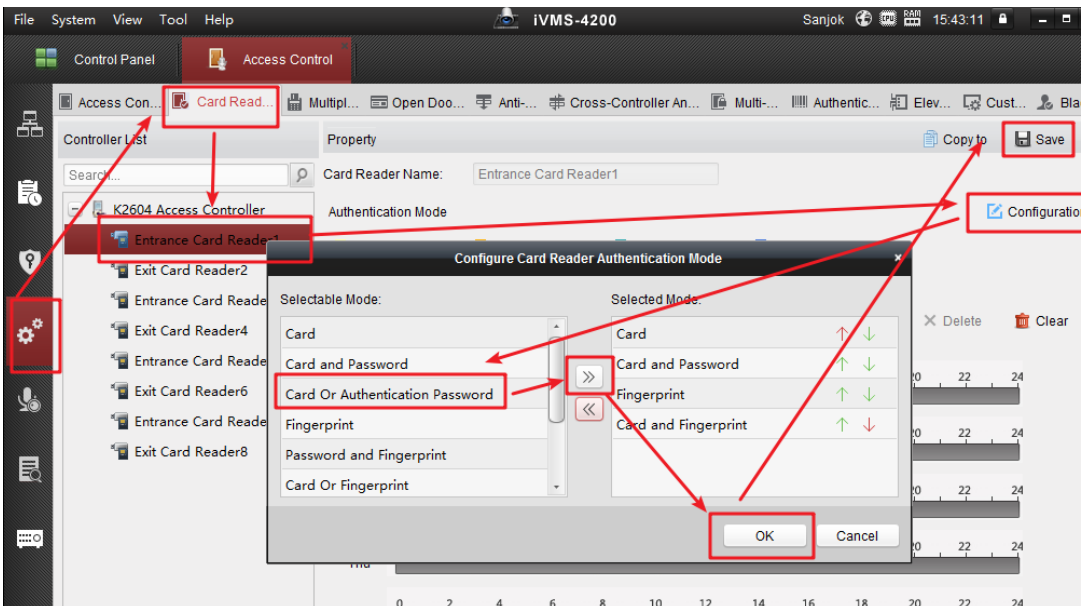
### 4) Add authentication password

Open advanced function menu and go to Authentication password interface



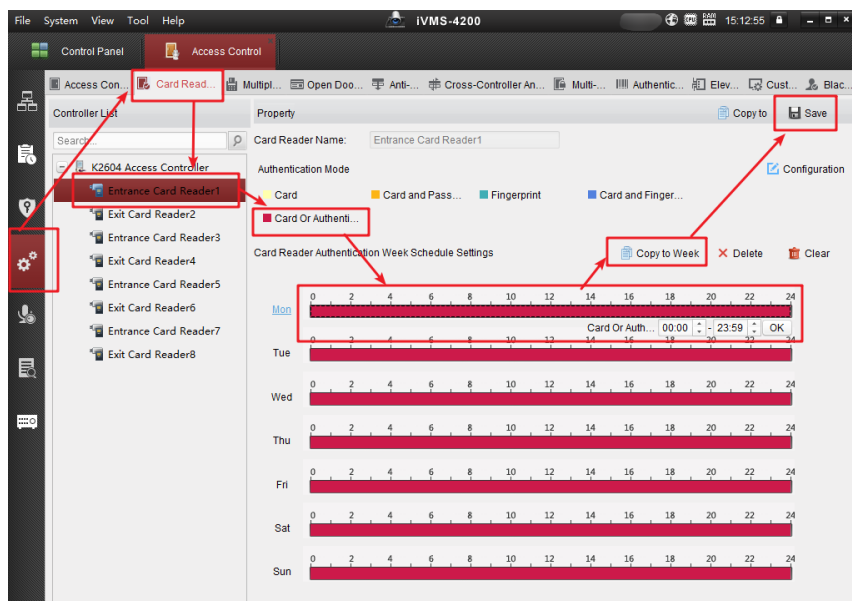
### 5) Change reader verify mode

a) Add verify mode Card or Authentication Password to list.



## DS-K2600 Open Door with Card or Password

b) Select Card or Authentication password, set effective duration, copy to week, and save to device.



6) Test

Swipe card on reader1, input password+# key to open door.

### Suitable Models:

Model	
DS-K2601	Single Door Access Controller
DS-K2602	Two Door Access Controller
DS-K2604	Four Door Access Controller