

<b>Title:</b>	How to add IP camera to indoor station	<b>Version:</b>	v1.0	<b>Date:</b>	05/12/2017
<b>Product:</b>	Video Intercom	<b>Page:</b>	1 of 4		



# How to add IP camera to indoor station

## Preparation

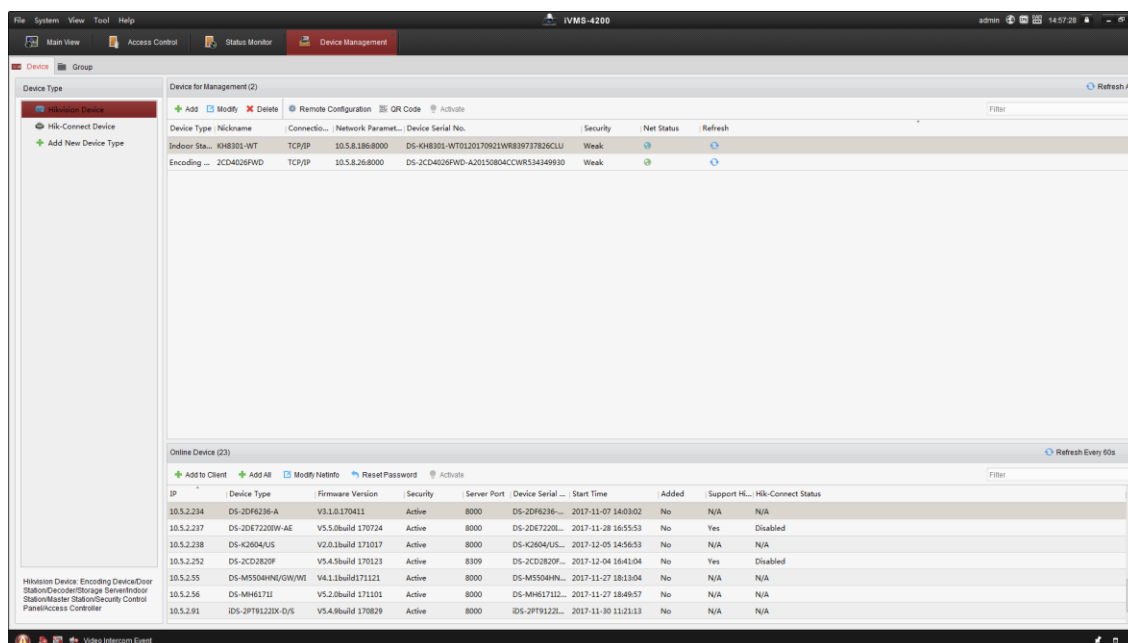
1. One indoor stations and one IP camera (DS-KH8301-WT firmware 1.4.71 & DS-2CD4026FWD-A firmware 5.4.5 in this document),
2. Client software iVMS-4200 (V2.6.2.50 bulid20170724 in this document).

### Note:

1. The camera should support H.264 coding
2. The indoor station can only support maximum 1280 \* 720 resolution.
3. Width range: 1280 960 800 720 704 640 528 352 320 288 176  
Height range: 720 608 600 576 480 384 320 288 240 208 144 128 120

## Step 1: Add Devices to iVMS-4200

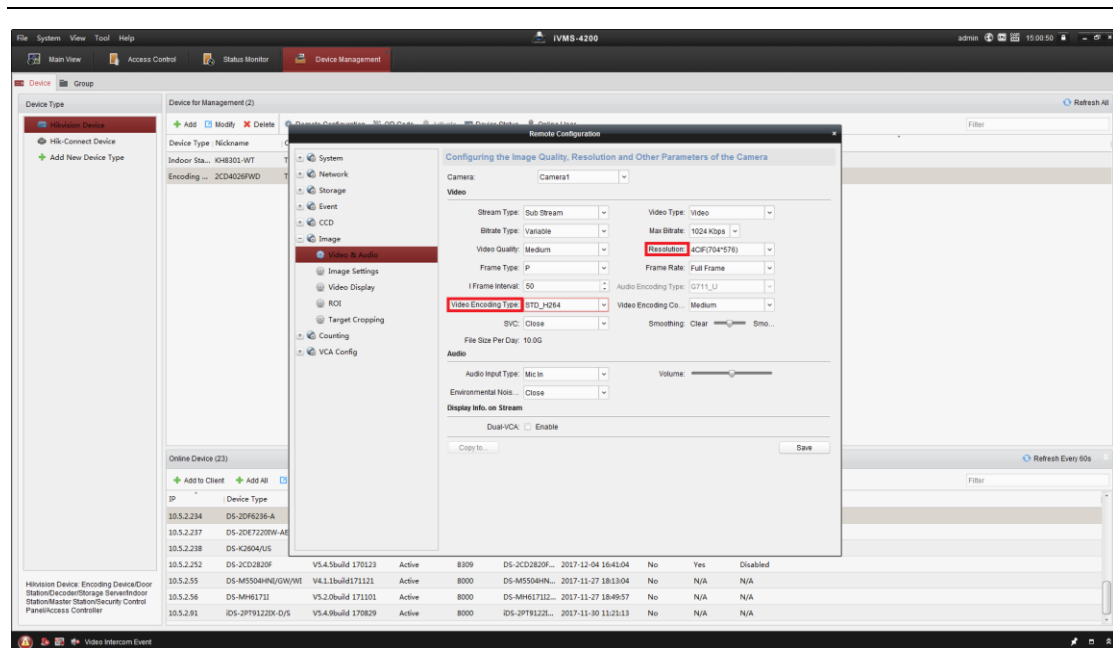
Click **Add to Client** tab to add all devices (one indoor stations and one IP camera) to iVMS-4200, make sure all devices are in the same local network, if not, click **Modify Netinfo** to modify it.



## Step 2: Set the IP Camera Stream

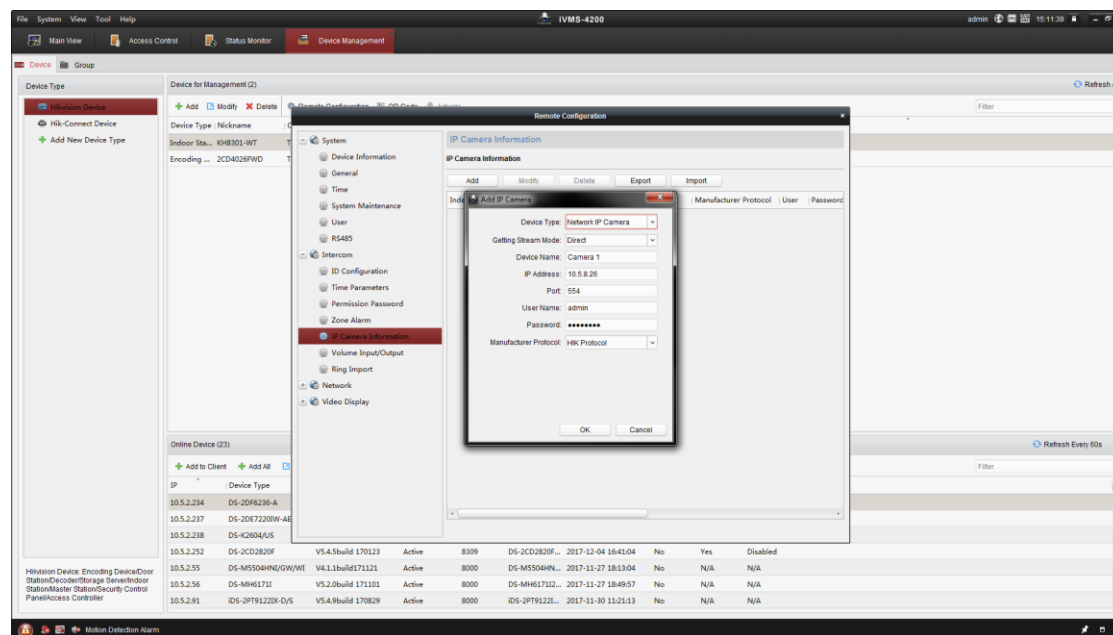
Choose IP camera, click **Remote Configuration**, Then go to **Image > Video & Audio**, set **Stream Type** as **Sub Stream**, set **Video Encoding Type** as **H264**, and make sure the **Resolution** is in the **Range**, then click **Save**.

<b>Title:</b>	How to add IP camera to indoor station	<b>Version:</b>	v1.0	<b>Date:</b>	05/12/2017
<b>Product:</b>	Video Intercom	<b>Page:</b>	2 of 4	<b>HIKVISION</b>	



### Step 3: Add the IP Camera to Indoor Station

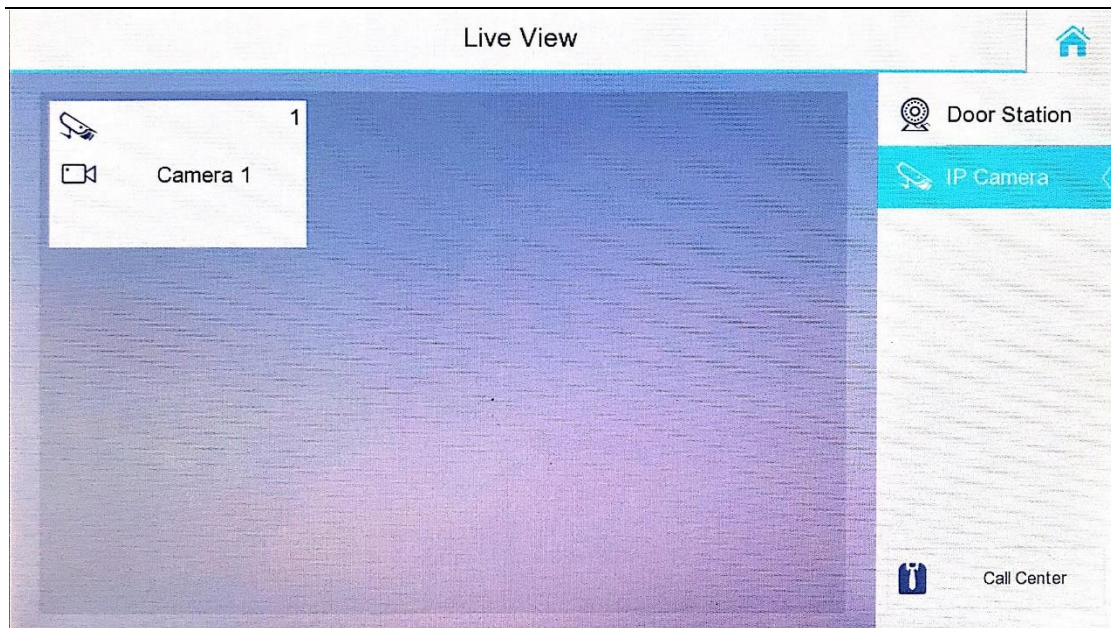
Choose one indoor station, click **Remote Configuration**, Then go to **Intercom > IP Camera Information**, set **Device Type** as **Network IP Camera**, input **Device Name** , in put **IP Camera IP Address**, input **Port 554** and **User name** , **Password** then click **Save**.



### Step 4: Watch the IP Camera on Indoor Station

Go to the indoor station. **Home Page > Live View >IP Camera>Device Name** you named.

<b>Title:</b>	How to add IP camera to indoor station	<b>Version:</b>	v1.0	<b>Date:</b>	05/12/2017
<b>Product:</b>	Video Intercom	<b>Page:</b>	3 of 4		



In this document, **IP Camera** named Camera 1. Choose this camera to get the live view.



**Live view** will be end in **30s**, and you can preview it again if the view was end.

<b>Title:</b>	How to add IP camera to indoor station	<b>Version:</b>	v1.0	<b>Date:</b>	05/12/2017
<b>Product:</b>	Video Intercom	<b>Page:</b>	4 of 4		



**First Choice for Security Professionals**

***HIK*VISION Technical Support**