

<b>Title:</b>	How to connect Two Indoor Stations to Two-button Villa Door Station	<b>Version:</b>	v1.0	<b>Date:</b>	26/01/2018
<b>Product:</b>	Video Intercom Device	<b>Page:</b>	1 of 5		



# How to connect Two Indoor Stations to Two-button Villa Door Station

## Preparation

- Two indoor stations and a villa door station;  
In this document, the model of first indoor station is DS-KH8301-WT and another one is DS-KH6310-W, the model of villa door station is DS-KV8202-IM;
- Free client iVMS-4200;

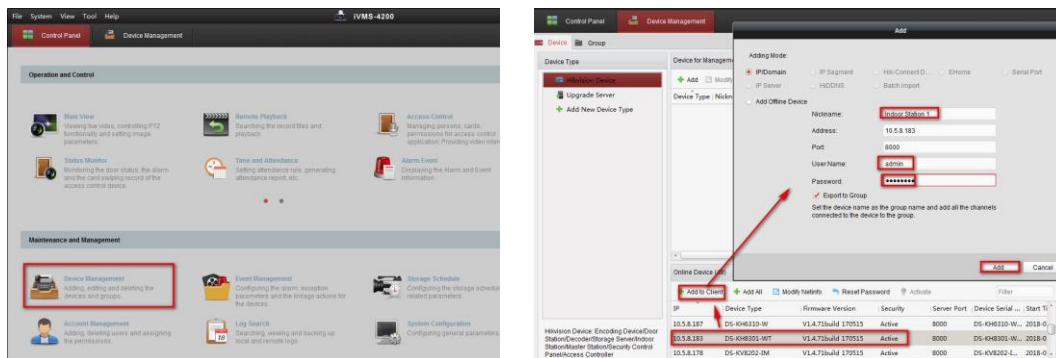
## Note

- The firmware of all devices should be the same version; and in this document all devices firmware is V1.4.71;
- In this document, we use V2.6.2.50 iVMS-4200 Client;
- This document is only for a simple video intercom system without master station;

### Step 1: Run iVMS-4200 Client

### Step 2: Add Devices to iVMS-4200 Client

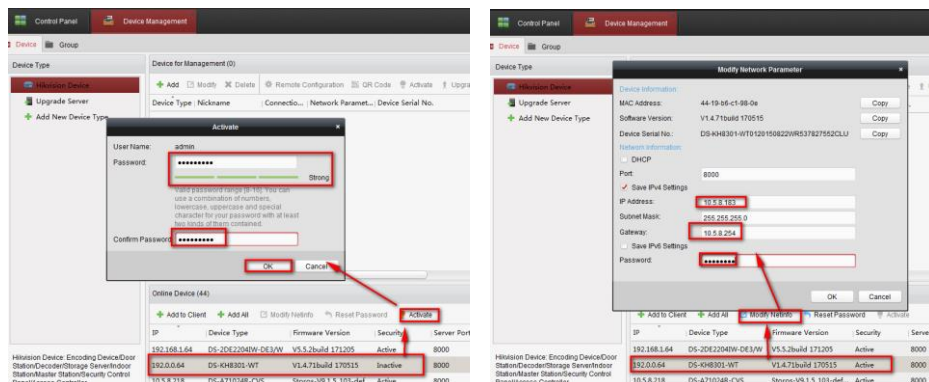
Enter **Device Management** interface, select your device and click **Add to Client** to add device;



*Note:*

*If your device are inative, please activate it first;*

*Make sure all devices are in the same local network; if not, click **Modify Netinfo** to modify it;*

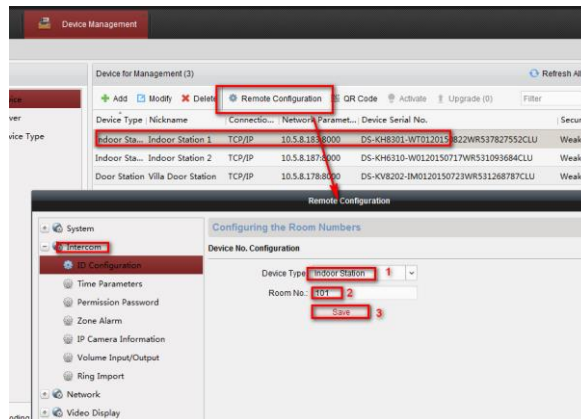


<b>Title:</b>	How to connect Two Indoor Stations to Two-button Villa Door Station	<b>Version:</b>	v1.0	<b>Date:</b>	26/01/2018
<b>Product:</b>	Video Intercom Device	<b>Page:</b>	2 of 5		



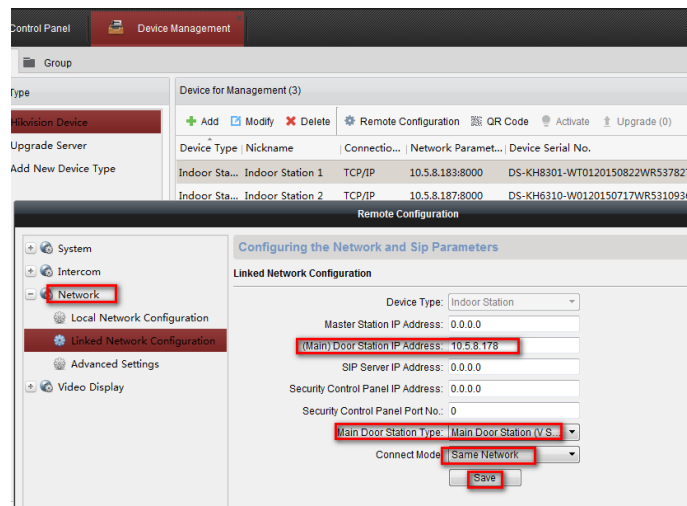
### Step 3: Set the First Mian Indoor Station --- ID Configuration

Select your indoor station and click **Remote Configuration, Intercom → ID Configuration**, set **Device Type** as **Indoor Station**, input room number (range from 1-9999), and click **Save**;



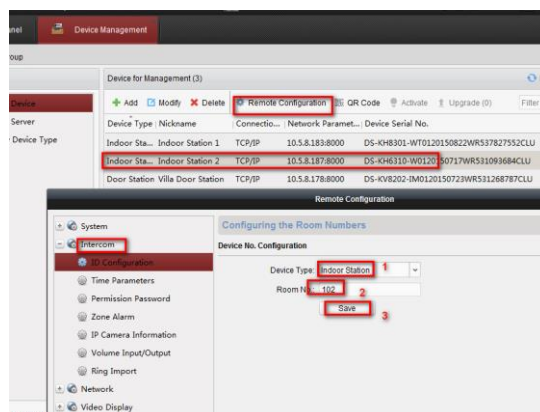
### Step 4: Set the First Mian Indoor Station --- Linked Network Configuration

Enter **Network → Linked Network Configuration** interface, input (**Main**) **Door Station IP Address** as the villa doors station's IP address, and select **Main Door Station Type** as **Main Door Station(V Series)**, **Connect Mode** as **Same Network**, and click **Save**;



### Step 5: Set Another Mian Indoor Station --- ID Configuration

Select your indoor station and click **Remote Configuration, Intercom → ID Configuration**, set **Device Type** as **Indoor Station**, input room number (range from 1-9999), and click **Save**;

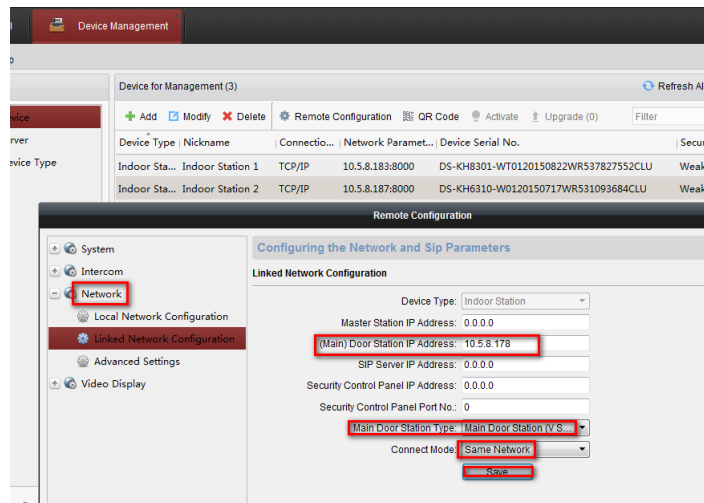


<b>Title:</b>	How to connect Two Indoor Stations to Two-button Villa Door Station	<b>Version:</b>	v1.0	<b>Date:</b>	26/01/2018
<b>Product:</b>	Video Intercom Device	<b>Page:</b>	3 of 5		



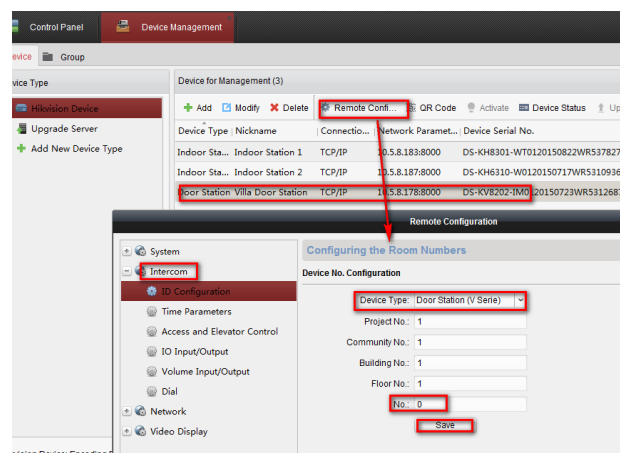
### Step 6: Set Another Main Indoor Station --- Linked Network Configuration

Enter **Network** → **Linked Network Configuration** interface, input (**Main**) **Door Station IP Address** as the villa doors station's IP address, and select **Main Door Station Type** as **Main Door Station(V Series)**, **Connect Mode** as **Same Network**, and click **Save**;



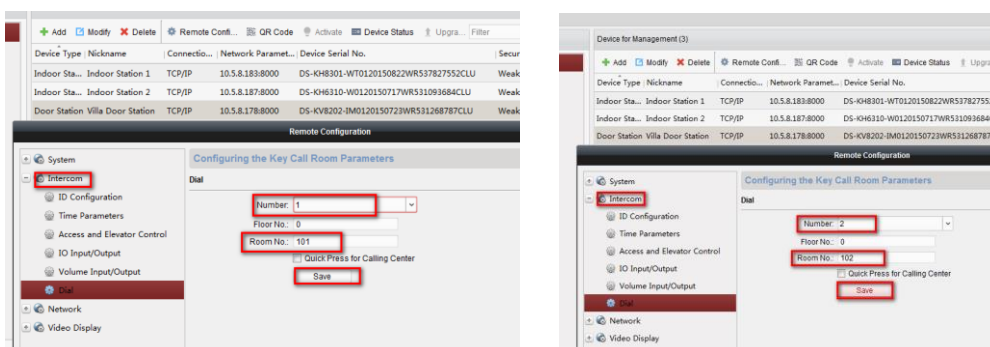
### Step 7: Set Villa Door station --- ID Configuration

Select your villa door station, click **Remote Configuration**, **Intercom** → **ID Configuration**, set **Device Type** as **Door Station (V Series)** and set **No.** as **0** (0 means villa door station works in main villa door station mode), and then click **Save**;



### Step 8: Set Villa Door station --- Dial

**Intercom** → **Dial**, configure as following pictures, and click **Save**;  
(**Number 1** means the first button of villa door station, **Number 2** means the second button)

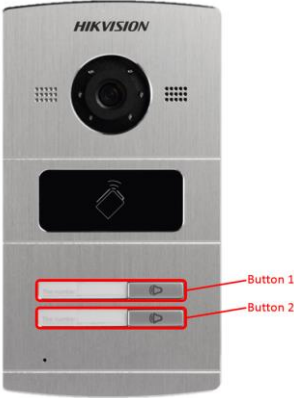


<b>Title:</b>	How to connect Two Indoor Stations to Two-button Villa Door Station	<b>Version:</b>	v1.0	<b>Date:</b>	26/01/2018
<b>Product:</b>	Video Intercom Device	<b>Page:</b>	4 of 5		



**Step 9: Calling**

Click calling-button of villa door station, and the indoor station will receive the calling.



<b>Title:</b>	How to connect Two Indoor Stations to Two-button Villa Door Station	<b>Version:</b>	v1.0	<b>Date:</b>	26/01/2018
<b>Product:</b>	Video Intercom Device	<b>Page:</b>	5 of 5		



**First Choice for Security Professionals**

***HIK*VISION Technical Support**