



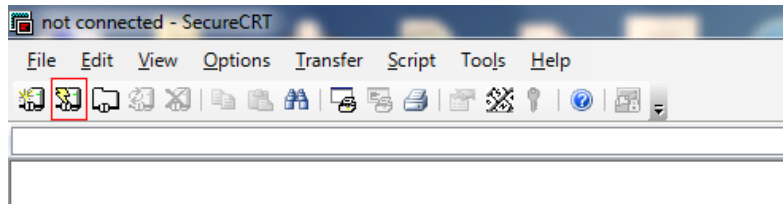
How to default 1200KI through serial port

HIKVISION TECHNICAL SUPPORT TEAM

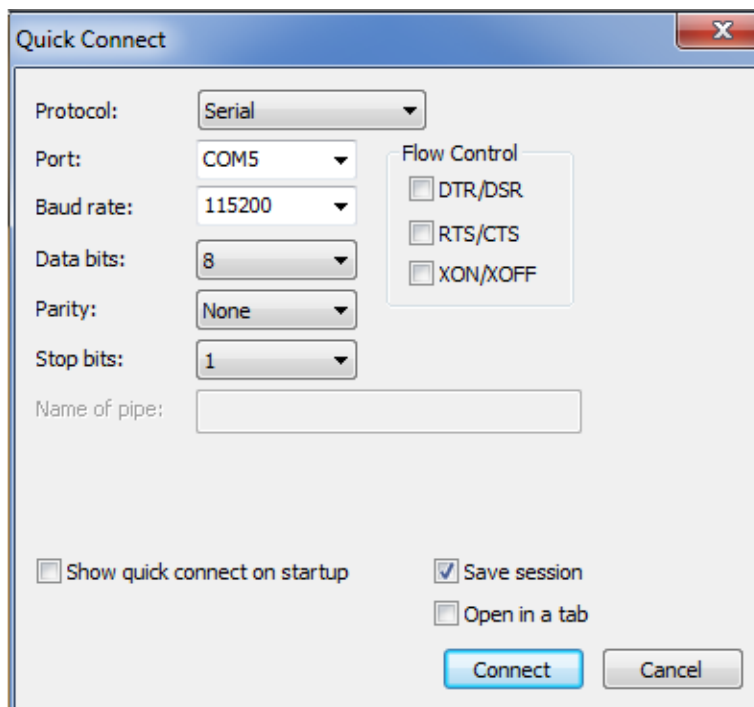
2018-6-23

How to Default 1200K through Serial Port

1. Open SecureCRT software and click **Quick Connect**

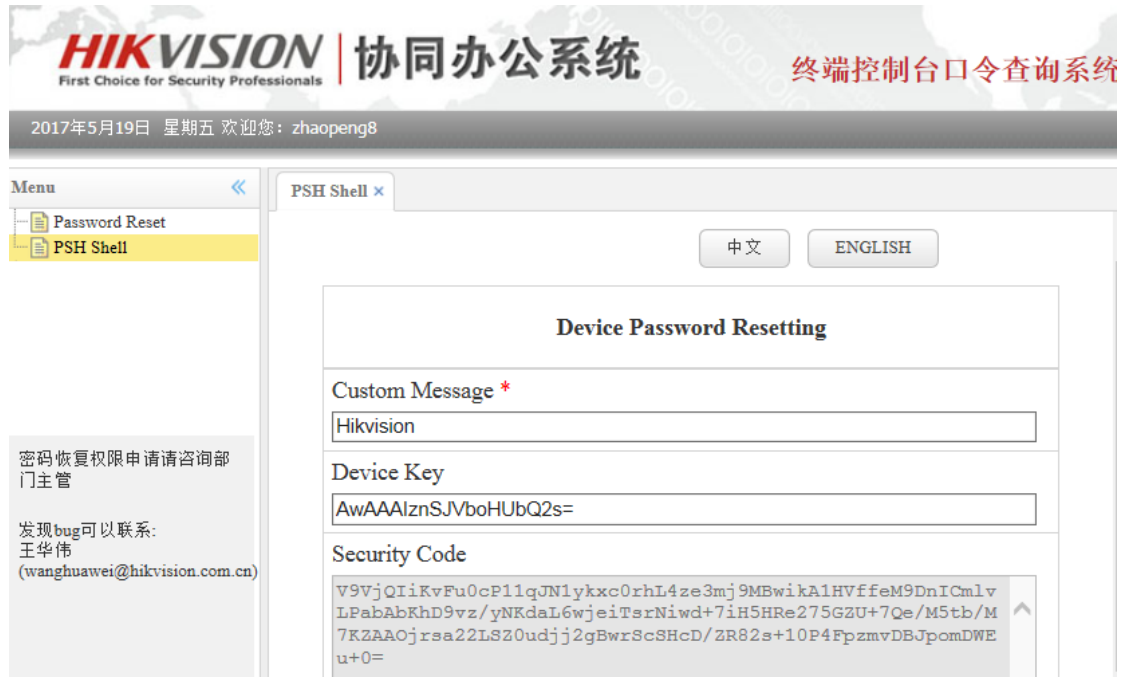


2. Choose **Serial** protocol, configure the parameters as below, disable flow control, and select the right COM port. You can find COM number in device management on computer.



3. Input **“zhimakaimen”** or **“debug”**, fill in the **security code** exported from **OA** to enter **debug mode**





- If you want to reset the 1006KI password, you can use the command **cd /** then, input **resetPassword** and then **reboot** it, the password will recover the default setting (nonactivated) .(above 1.1 version) another way:

rm /home/hik/mdCfg.bin

rm /home/hik/mdCfgB.bin

reboot

after rebooting, enter debug mode again, and then input **setInfo 1:1**.

- If you want to recover the 1200KI password, you can input **t1 h** and choose 5 option. Then the device will recover factory settings. You need to activate it again.



```
#  
#  
# t1 h  
  
T1 帮助文档:  
[t1]: 测试RTC、RS485/RS422、USB。  
[t1 0]: 测试RTC。  
[t1 1]: 测试RS485/RS422。  
[t1 2]: 测试USB。  
[t1 3]: 测试背光, 5秒后屏幕变暗。  
[t1 4]: 测试蜂鸣器, 发出3次"滴"的声音。  
[t1 5]: 测试按键开始, 串口打印键值。  
[t1 7]: 测试开机画面, 标配显示"HIKVISION", 中性显示"WELCOME"。  
[t1 r]: 恢复出厂。  
[t1 s]: 设置RTC, 格式为 "t1 s:2018-08-23/15:54:28"。  
[t1 h]: 帮助文档。  
[t1 q]: 退出T1。
```

Notes: Of course expect this way, you also can use SADP tool to reset password for 1200KI as IPC.



First Choice for Security Professionals Hikvision Technical Support

