

How to control IP speed dome by DS1100KI keyboard

Steps:

Step1. Power the DS1100KI and connect it into network.

Step2. Click **keyboard** in interface.



Step3. Select **admin** on the login interface and then input the admin password (default: 12345) to enter the admin interface of keyboard operation.



Step4. Click **Keyboard > Network** to enter the Network Settings interface. Configure the network settings of the keyboard, including the **Port**, **IP address**, **Subnet Mask** and **Default Gateway**, and finally click **Apply** to save the settings.



Step5. Click **Return** to back to the main interface.

Step6. Click **Device** on the **admin** main interface to enter the device management menu.

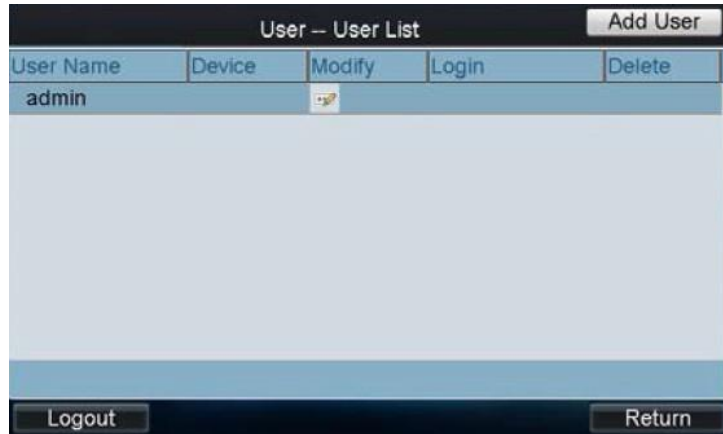
Step7. Click **Add Device** to enter the “Device-Add Device” interface. Input the device name, device IP, port, user name and password, and then click **Add** to add the device.

Step8. Return to the “Device-Device List” interface, and the successfully added device is shown on the list. Click **Return** to back to the main interface.

Device Type	Device Name	IP Address	Port	Status	Modify
Unknown	DVR	172.6.21.87	8000	Online	


Total 1 items Page 1/1 To 1 P

Step9. Click **User** on the main interface to enter the “User-User List” interface.



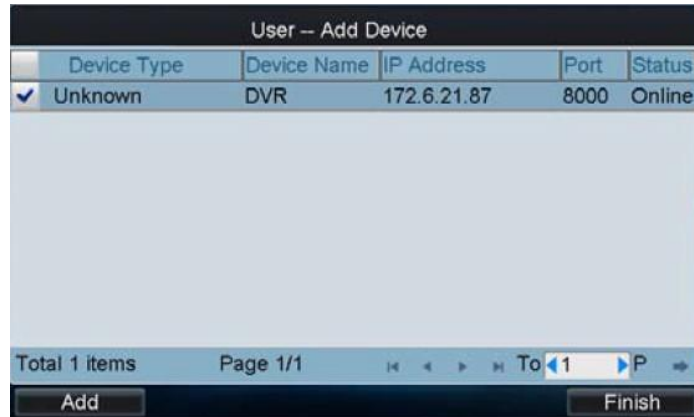
Step10. In the User List interface, click **Add User** to enter the “Add User” interface. Input the user name, password and verify the password. Finally, click **Add** to finish the adding of user.



Step11. Return to the User List interface, and click  of the selected user to enter the “User-Device” interface.



Step12. Click **Add Device** to enter the “User-Add Device” interface. Select the device by clicking the checkbox, and click **Add** to add the device for the current user. And the added device (s) for the current user can be displayed on the “User List” interface.



Step13. You can directly click the (Login) icon of a user to switch its operating interface.



Step14. Press **0** and then press **MON** to active local preview.

Step15. Press device number and then press **CAM** to choose the camera.

Step16. Press **Esc** to start preview



Step17. Operate the joystick to control PTZ movement.

Step18. Press number and then press **Preset** to set the preset.

Step19. Press number and then press **Call** to call the preset.

Step20. Press number and then press **Patrol** to call the patrol.

Step21. Press number and then press **Pattern** to call the pattern.

First Choice for Security Professionals
Hikvision Technical Support