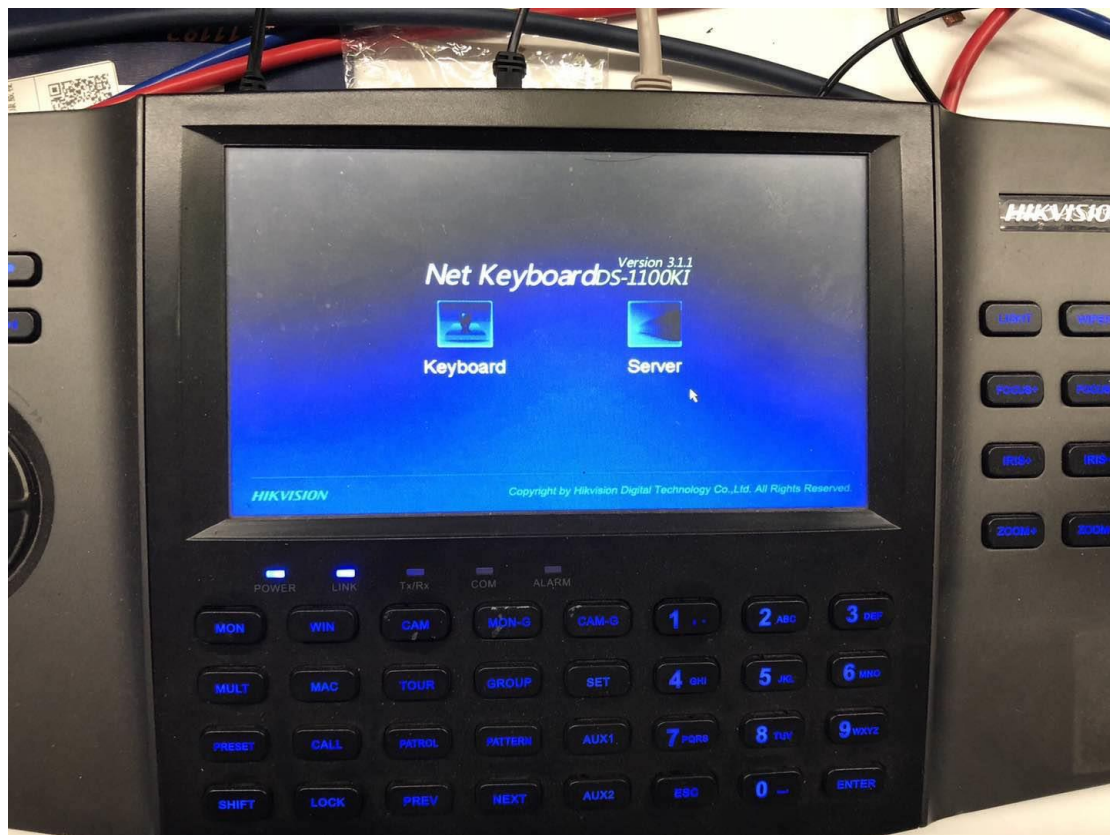
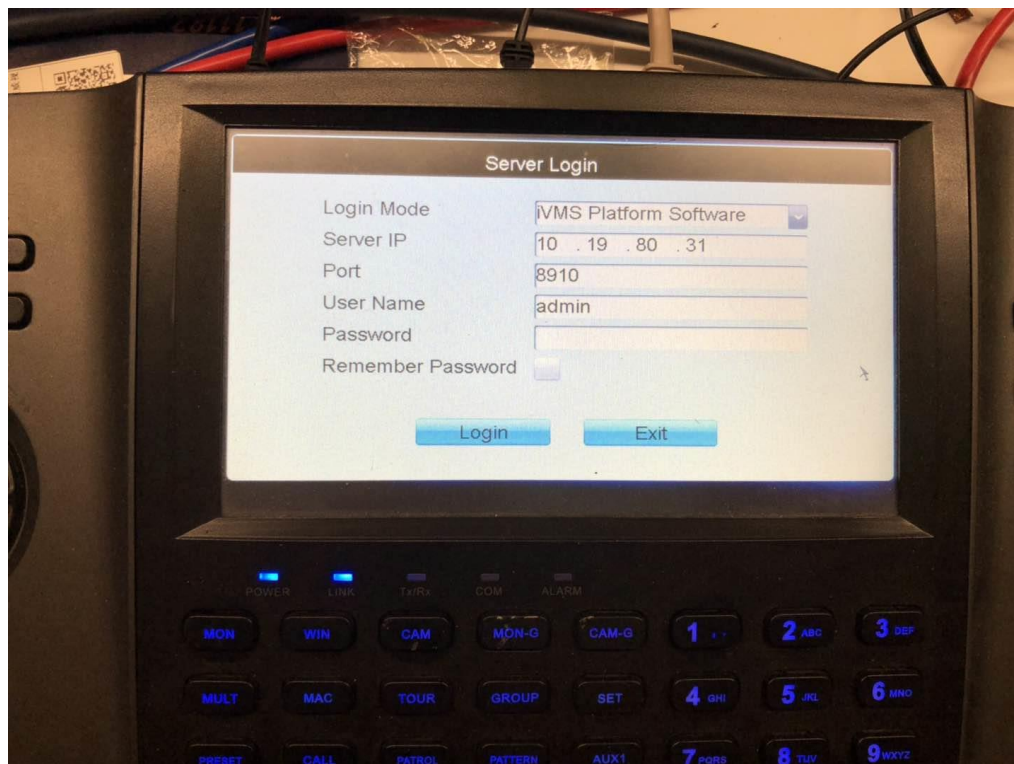


1100KI cooperate with HIK-central

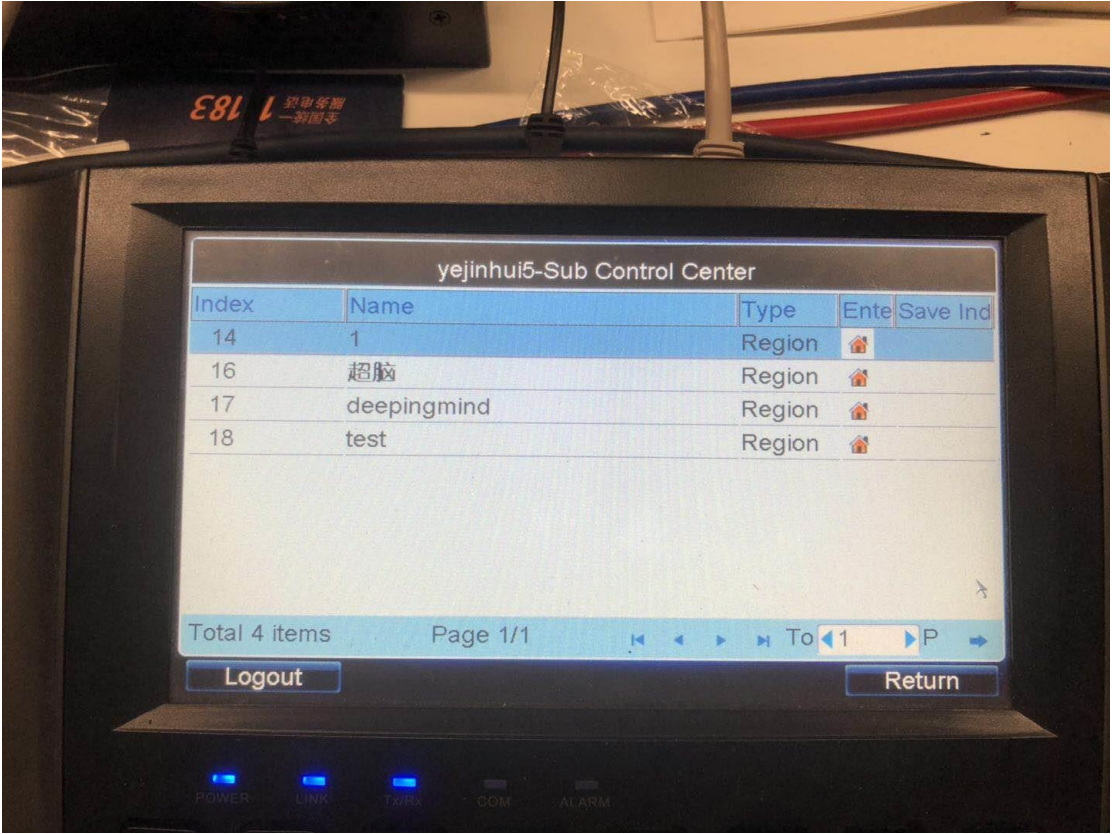
Step 1: choose server mode.



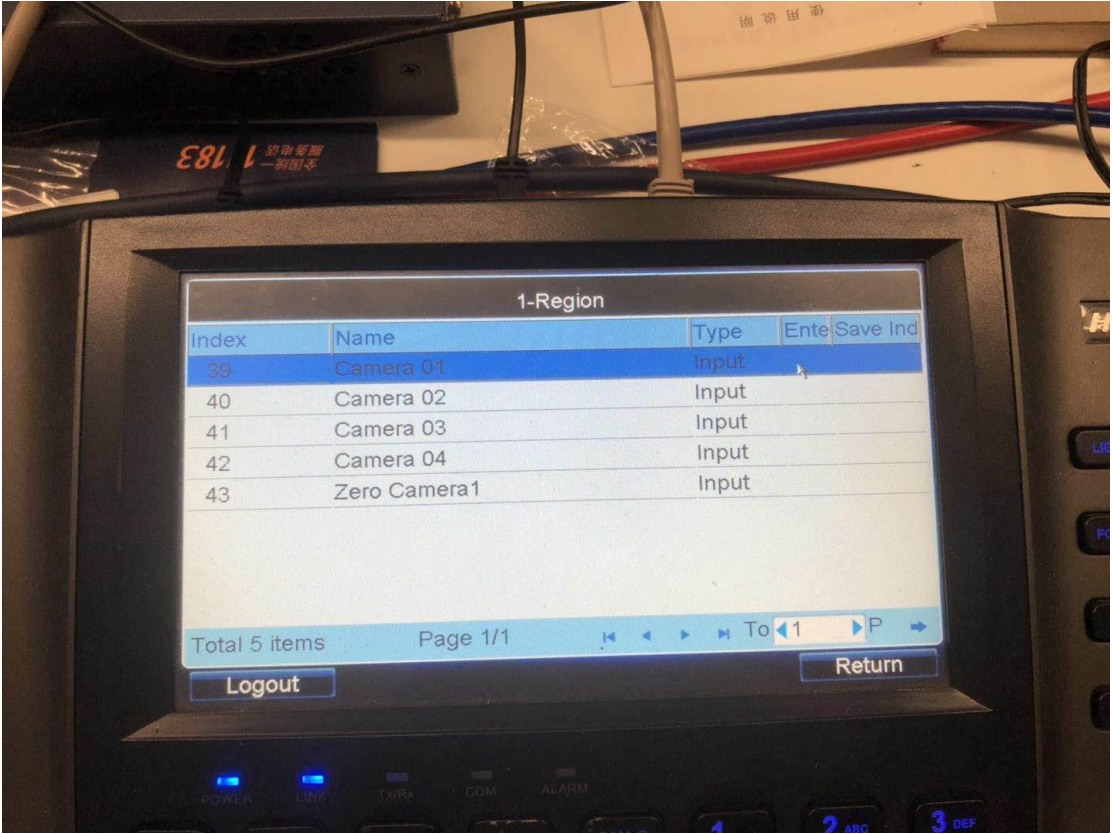
Step 2: choose iVMS Platform Software. Then input platform username and password. Port is 8910, we don't have to change.



Step 3: sub control center is the interface you can see added device on platform.

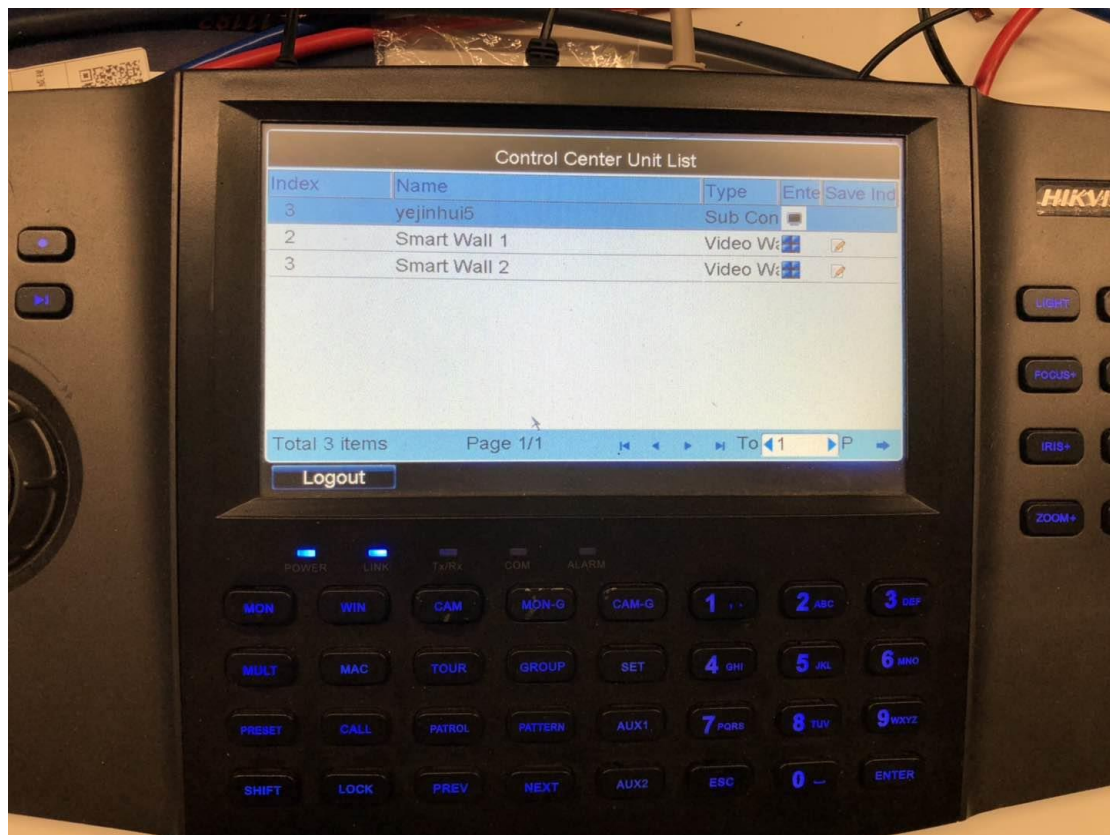


Index means the device index added on platform directly. When you enter the matched region, you can find the list of channel. This index means channel NO.

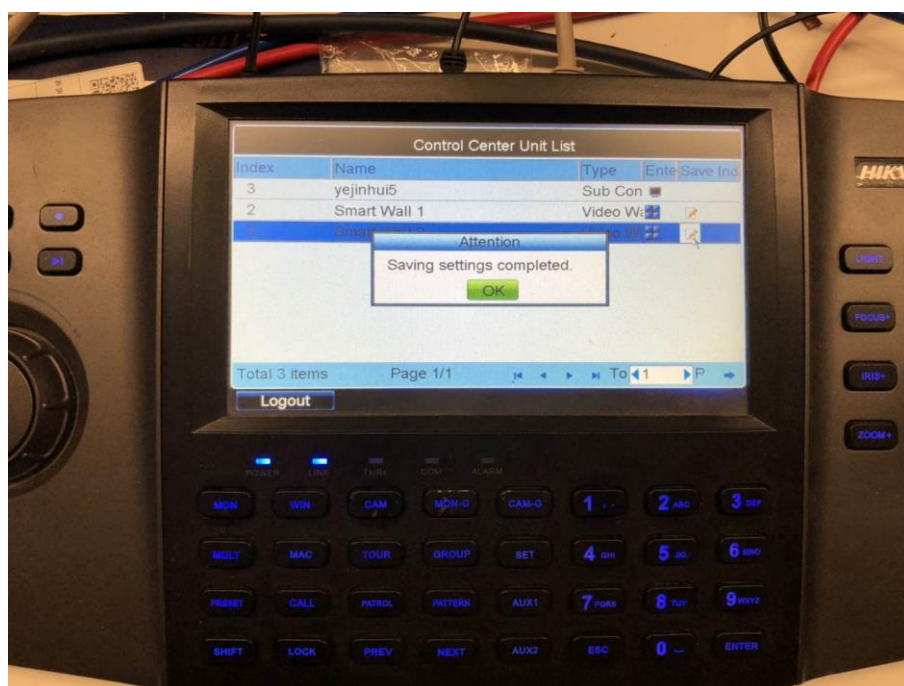




Choose Smart Wall and click save index button. This operation will make keyboard get newest information data from platform.

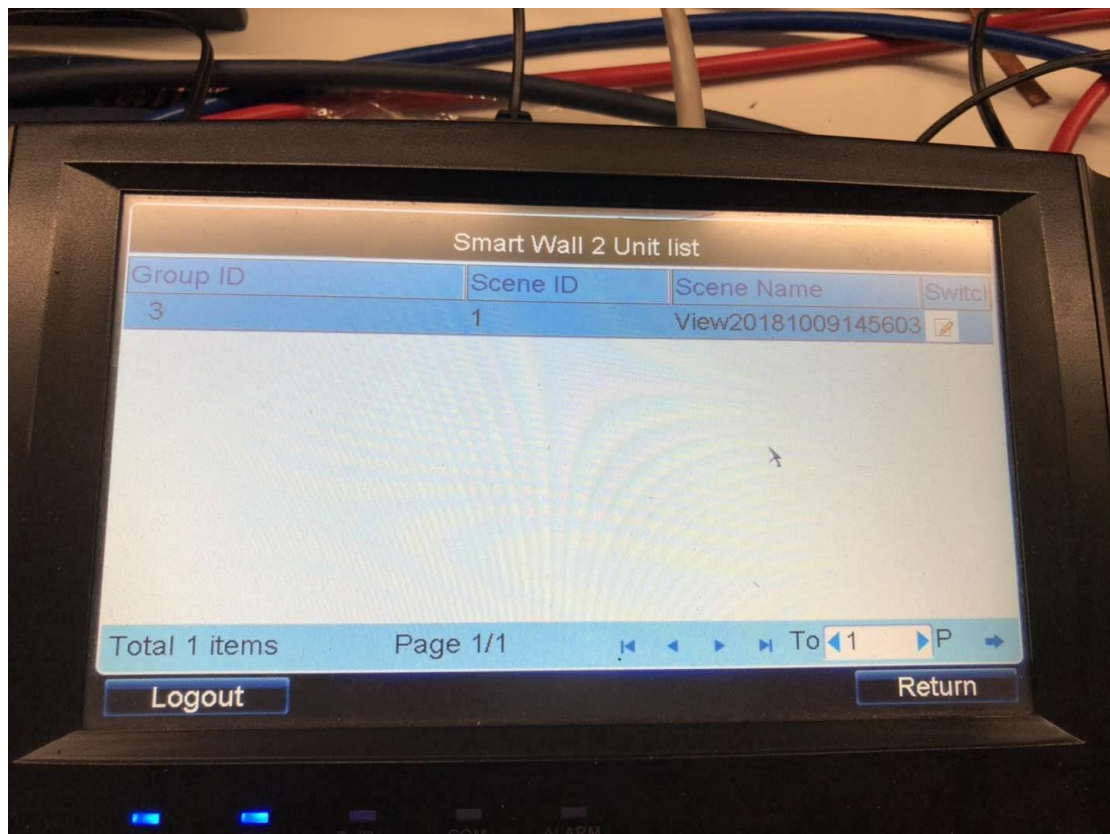


Step 4: when keyboard pop up this information, it means device has finished information synchronizing.

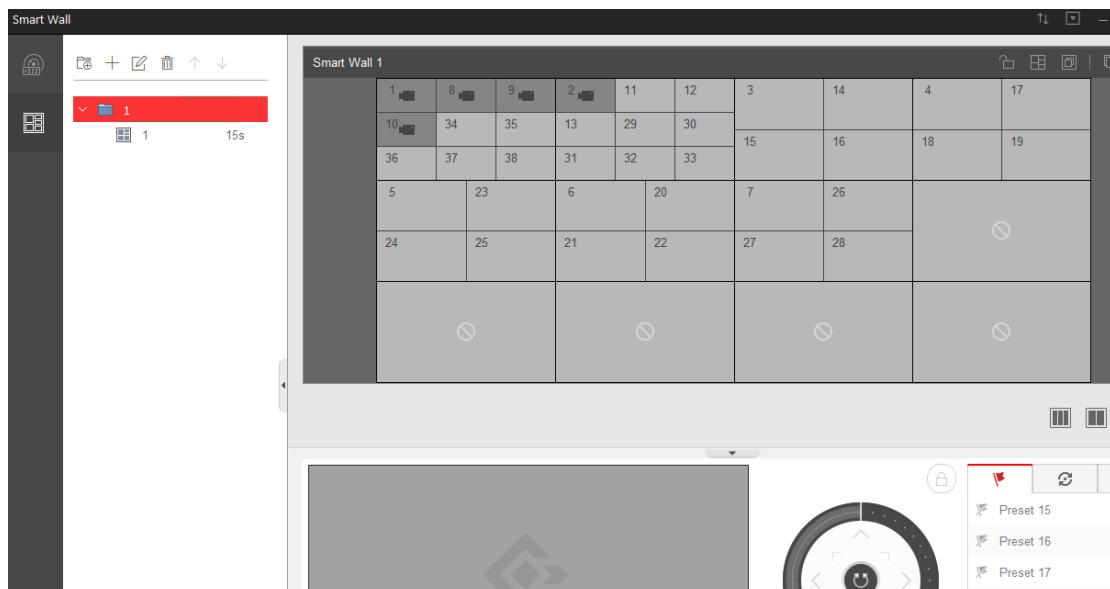


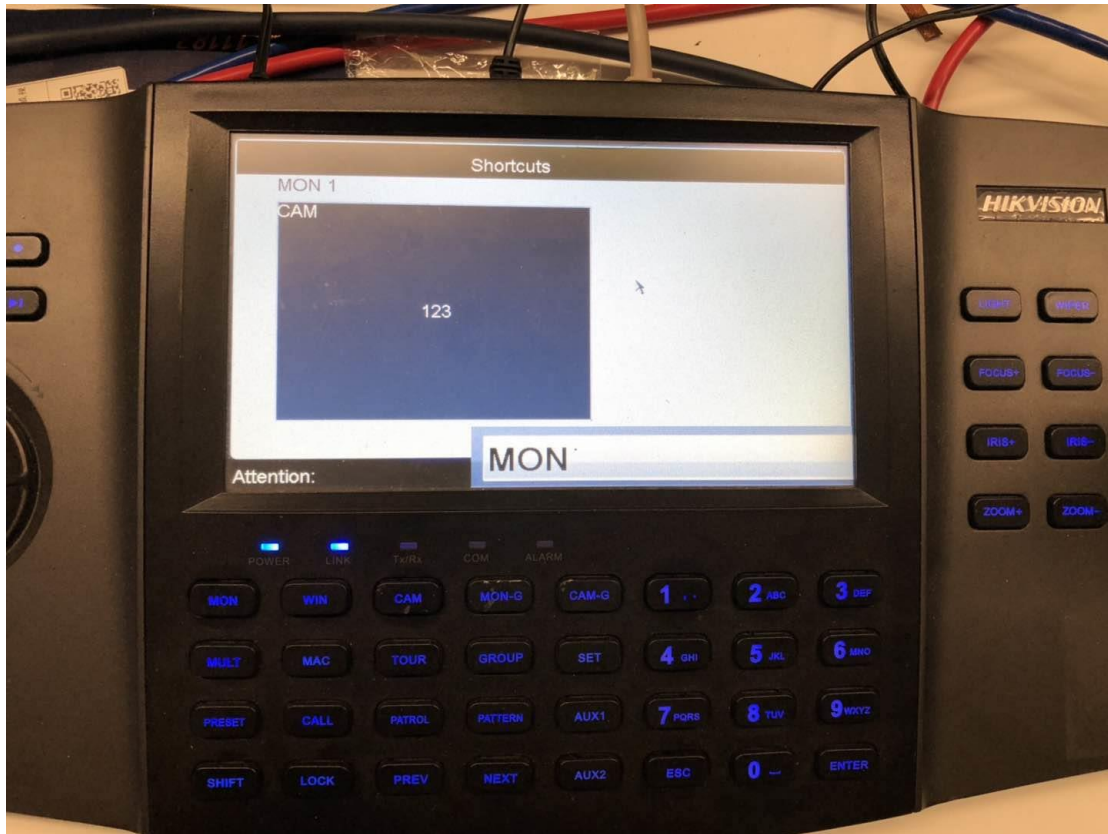
Step 5: enter Smart Wall and you can see the VIEW NO.(scene ID). And remember to save

view on platform, otherwise you can't find the scene ID.

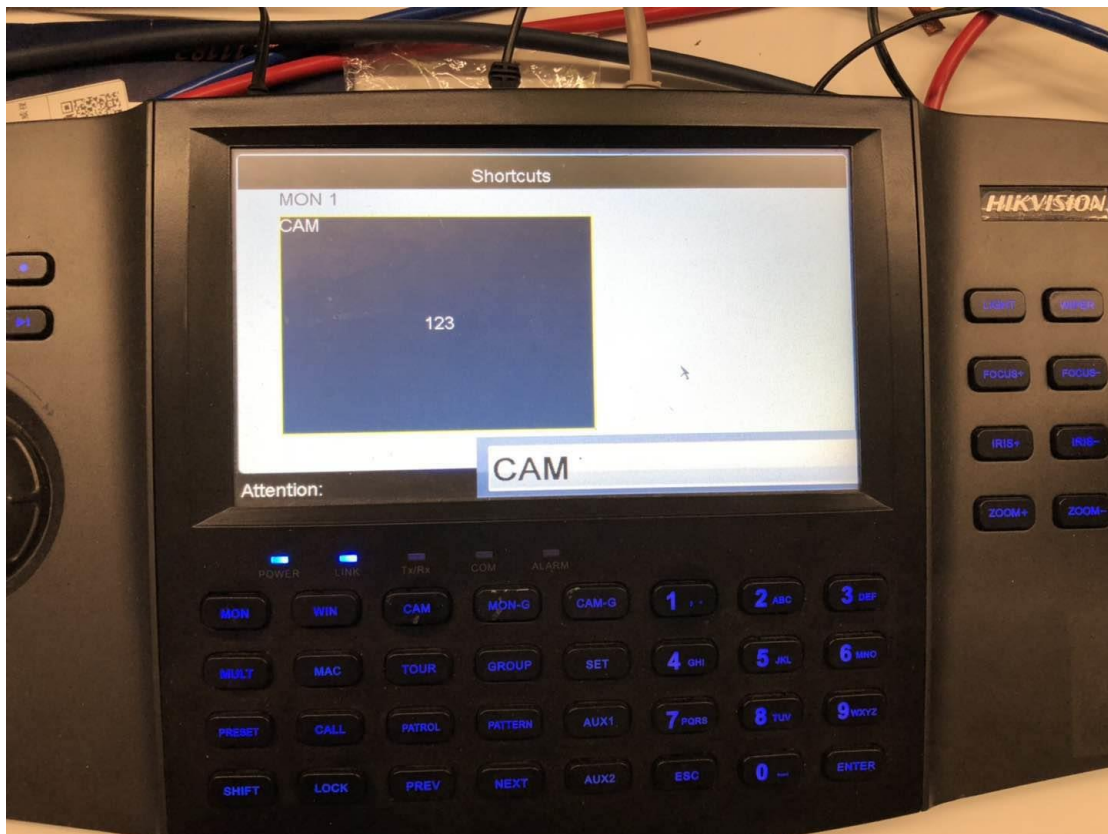


Step 6: press number + MON button you can enter the interface of this main window. The MON button, you need to find it from platform.





Step 7: press number + CAM button, you can change other camera to this window to display.



Step 8: if you want to divide the output interface, choose any sub MON belong to this output interface is ok. The division will apply to this output interface.