



## How to use 1005KI with iVMS-4200

HIKVISION TECHNICAL SUPPORT TEAM

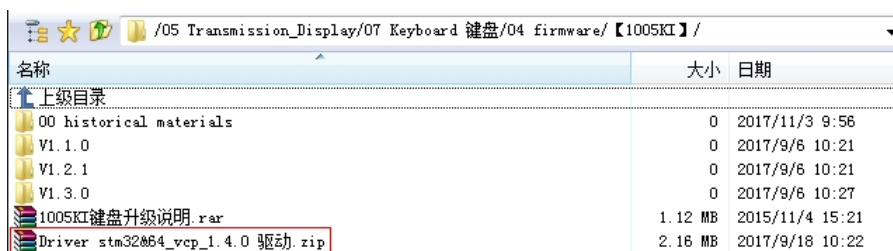
2017-11-03

## How to use 1005KI with iVMS-4200

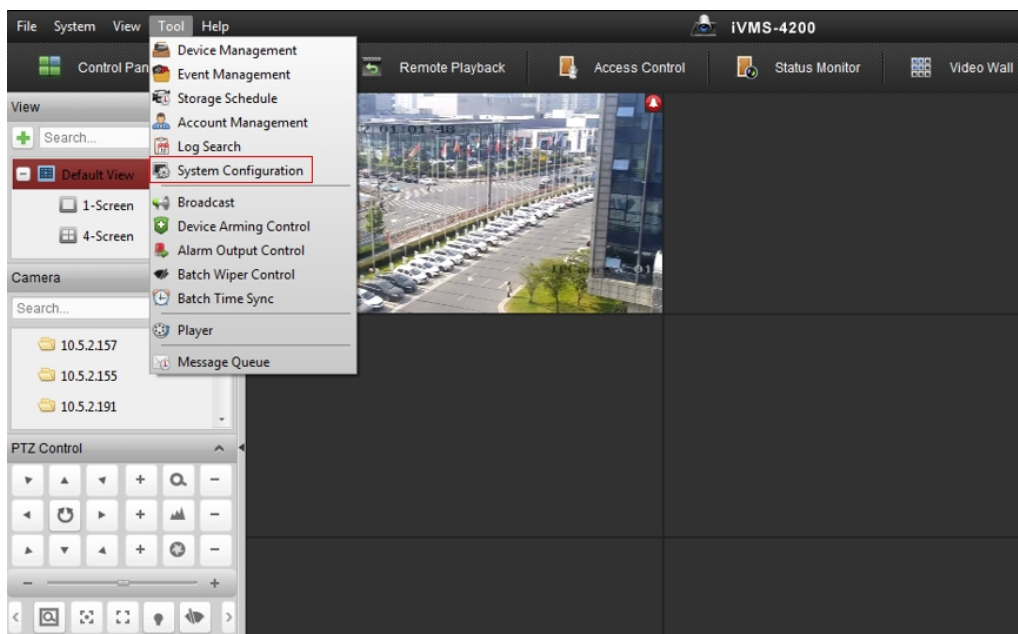
Hikvision keyboard DS-1005KI support USB connection to computer and control over client software iVMS-4200. This document is intended to show the steps of how to use 1005KI with iVMS-4200.

**Note:** iVMS-4200 Video Wall Client, platform software 5200P, 5200E, etc do not support connection with 1005KI

Tools: 1005KI, PC with iVMS-4200 installed, keyboard driver software

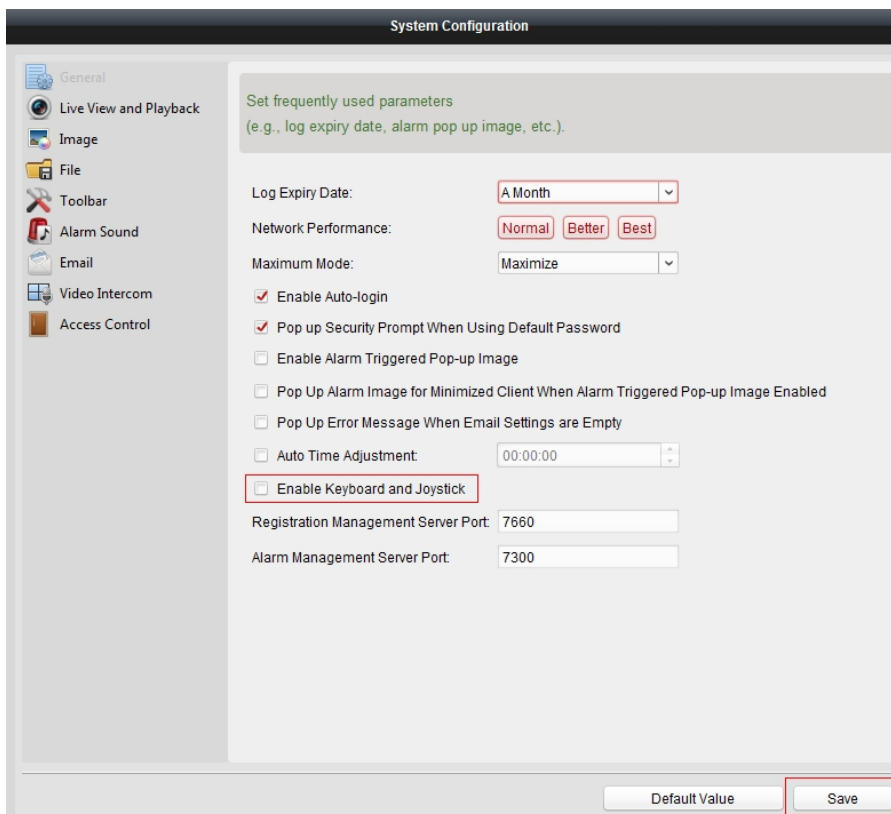


1. Download **driver** on PC and install
2. Run iVMS-4200, keyboard option is disabled by default, click **Tool – System Configuration**

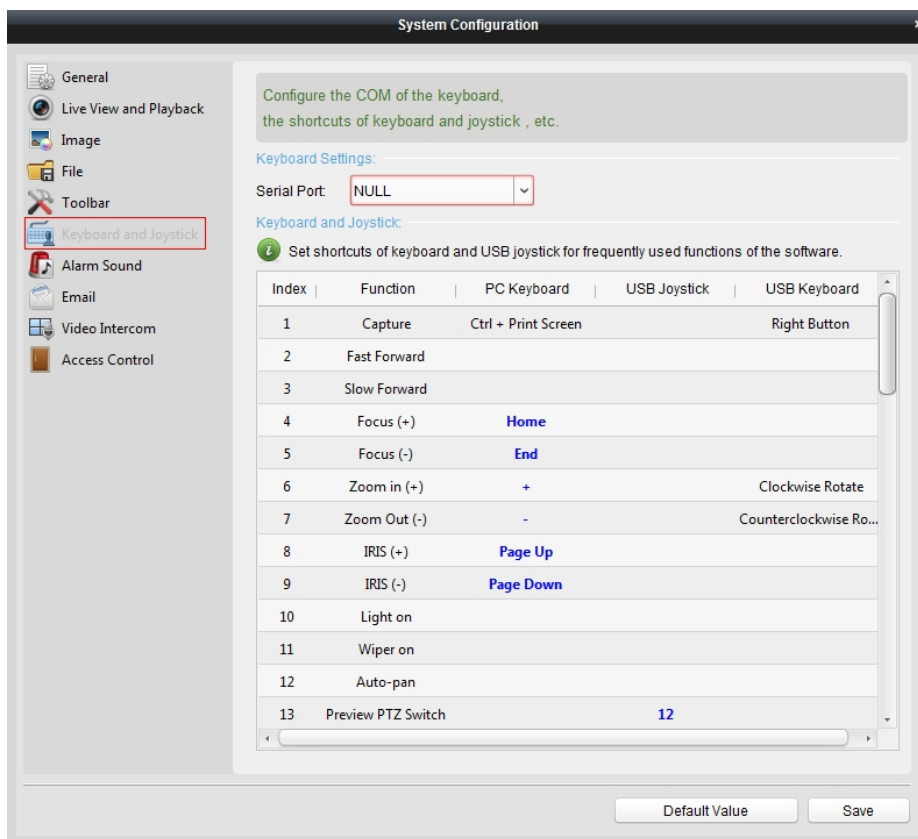


Tick **Enable Keyboard and Joystick**, save





Quit System Configuration and **enter again**, you will find **Keyboard and Joystick** option on the left. Shortcuts of keyboard can be configured here (Usually there's no need to change).



3. **Restart iVMS-4200** to take the configuration into effect, connect 1005KI to USB port of PC, and the keyboard will be auto-detected

USB joystick device is found.

4. Operation of keyboard

- 1) Default operation under **USB joystick mode(two lights on)**





Keyboard is under window switching mode once connected, you can use Joystick to select different window

The USB joystick is in the window switching mode currently.

Click right button on joystick to change keyboard to PTZ control mode, use joystick to control PTZ

The USB joystick is in the PTZ control mode currently.

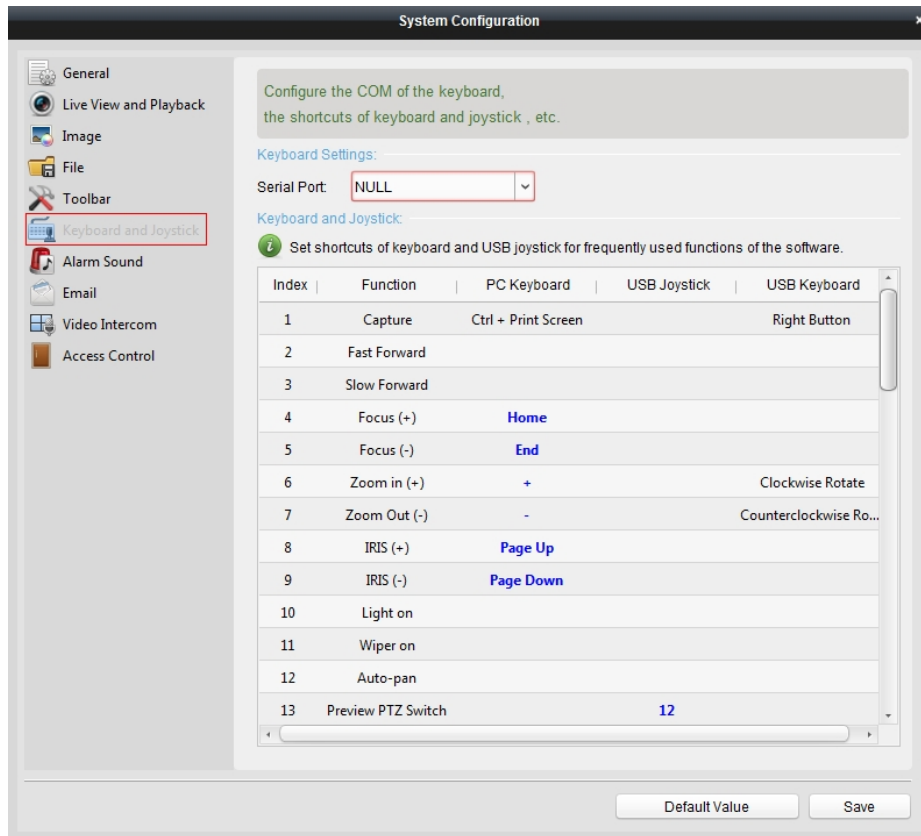
- 2) Default operation under **USB keyboard mode(one light on)**, long click  on keyboard to change mode

① With  on, use joystick to control PTZ, left button on joystick means record with and right button means capture picture

② With  on, press Num+  button to select different window



More details about operation, please refer to the relationship chart



# First Choice for Security Professionals Hikvision Technical Support

