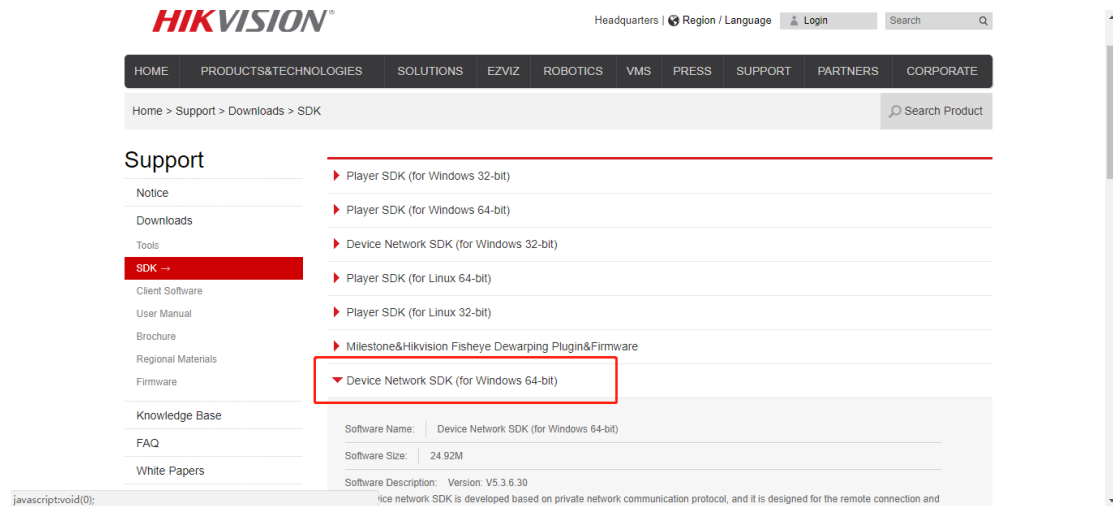


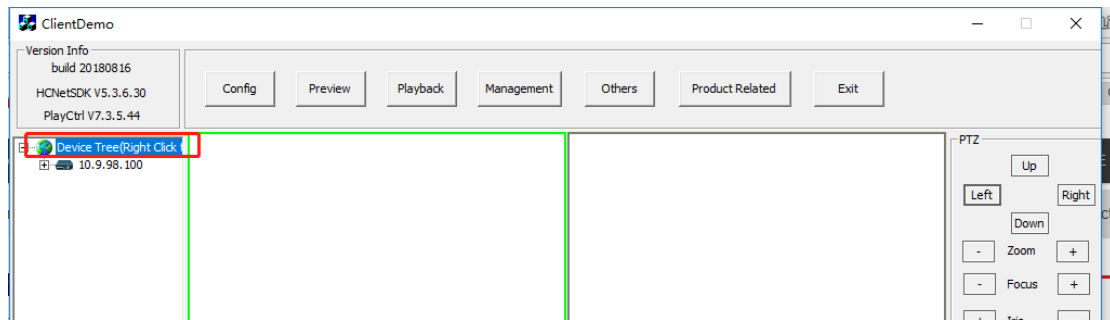
how to load config file by demo

1. Download demo from Hikvision official website.

Link: <https://www.hikvision.com/en/Support/Downloads/SDK>

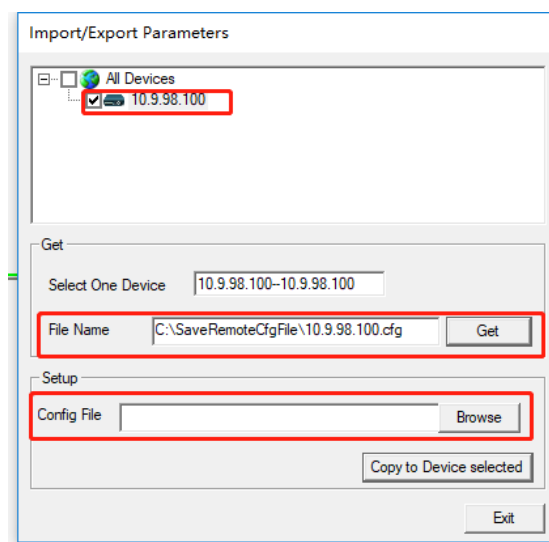
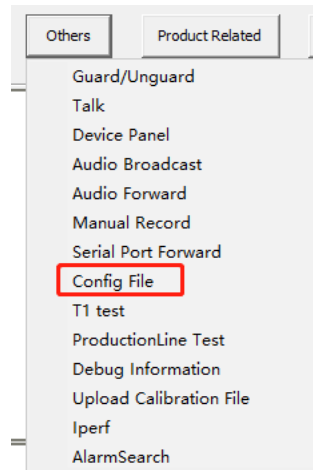
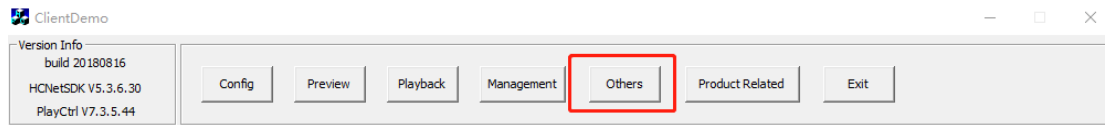


2. Add device on demo. Right click call the adding interface and then input device information then add it.



The screenshot shows the 'Add Device' dialog box in the ClientDemo application. The dialog has several sections for configuring a new device. The 'Local Node' field is empty. The 'Device Address' field contains '172.9.3.97' and is highlighted with a red box. The 'Port' field contains '8000'. The 'Username' field contains 'admin' and the 'Password' field contains '*****', both highlighted with red boxes. The 'Login Mode' is set to 'Private'. There are options for 'Get IP of Device on DDNS' and 'Get IP of Device on HCDNS'. The 'DDNS Address' is 'www.hiddns.com' and the 'DDNS Port' is '80'. The 'Device Serial Number' is 'E0120110526CCR-403594603'. The 'Device Name/Alias' field is empty. There are sections for 'Use HC Account' and 'Use Developer Account'. The 'Proxy server' is set to 'no use proxy'. The 'Add' button is highlighted with a red box.

- Then click **others** to call the list and choose **config file**. Then from **file name** option, you can get current selected device configuration, **browse** button, you can search the local file to load the selected device.



- After operation, tap **copy to device selected** button, finished.