



How to print decoder information via SSH  
Quick Guide

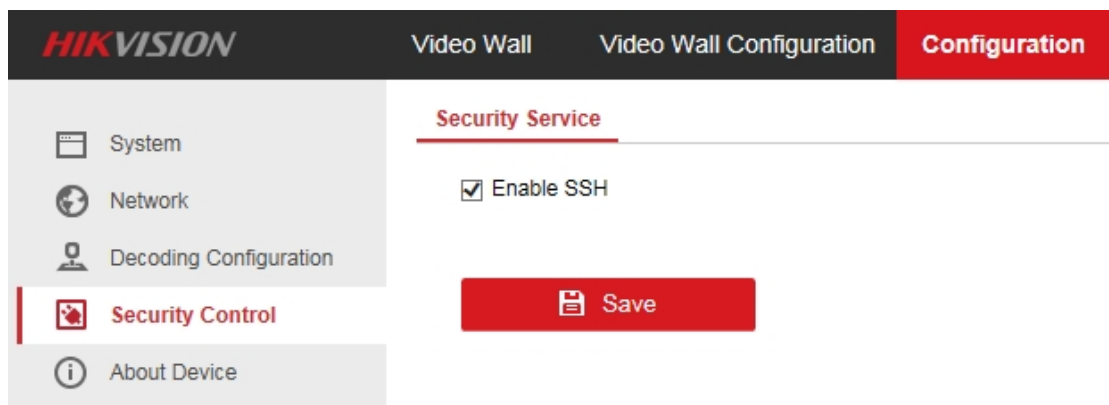
HIKVISION TECHNICAL SUPPORT TEAM

2017-8-15

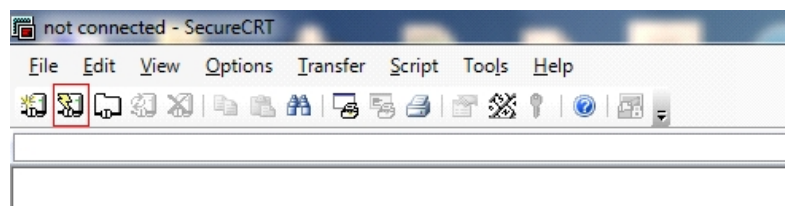
## How to print decoder information via SSH

In order to collect decoder's running status information, traditionally a serial port line is required to print running information. After **V2.1.0 (6900UDI series)** is released, 6900UDI series decoder now support SSH protocol. SSH protocol can establish a secure link between decoder and client, decoder's running status information can be transmitted through network. Notice that this function can only be used in Local Area Network.

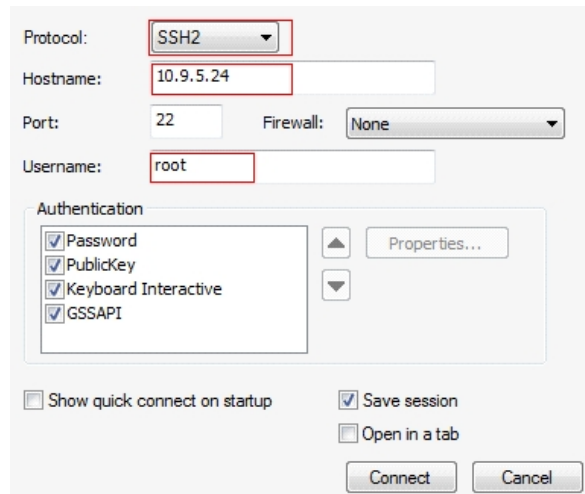
Login in decoder's webpage, go to Configuration-Security Control, check Enable SSH and click save. Remember disable SSH after operation.



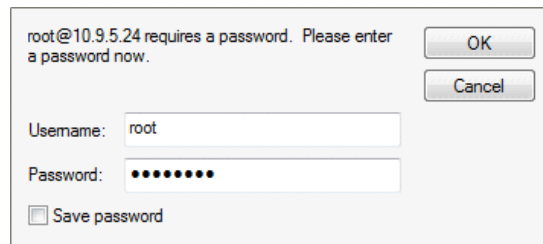
Open SecureCRT software and click Quick Connect.



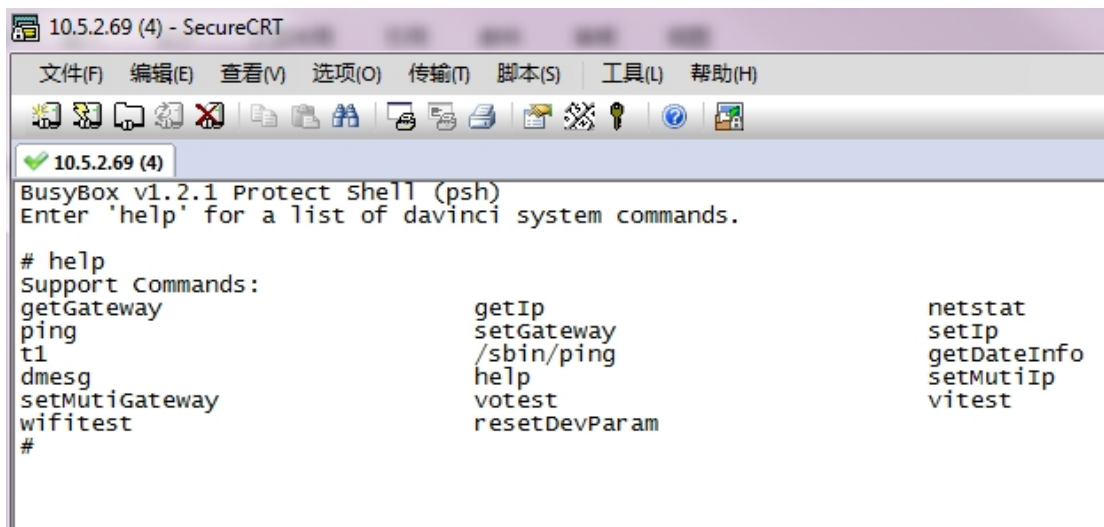
Choose SSH2 protocol, set 22 as port number, input the IP address and user name of decoder. Notice that the username must be 'root'.



Input the password of decoder and click OK.



Now you can test and debug the device. Notice that u-boot mode is not supported through SSH protocol.



# First Choice for Security Professionals Hikvision Technical Support

