



## How to default decoder through serial port

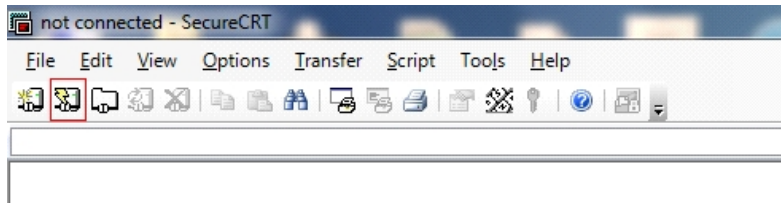
HIKVISION TECHNICAL SUPPORT TEAM

2017-5-19

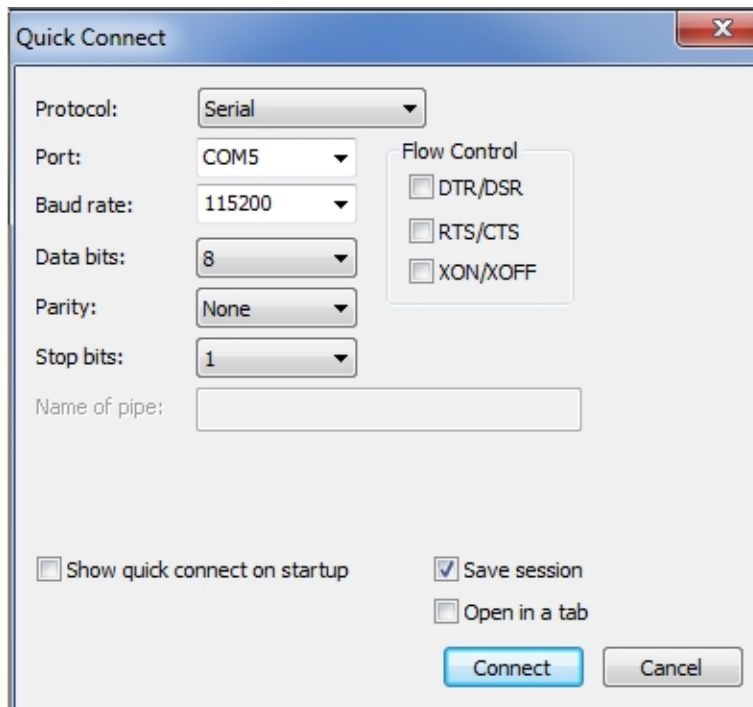
# How to Default Decoder through Serial Port

In some cases, decoders may break down, and cannot be operated through web or client software, even cannot be found on SADP Tool. Follow the steps listed below, you can default 6400HDI-T & 6900UDI via RS232 terminal commands successfully.

1. Open SecureCRT software and click Quick Connect



2. Choose Serial protocol, configure the parameters as below, disable flow control, and select the right COM port



3. Input "zhimakaimen", fill in the security code exported from OA to enter debug mode





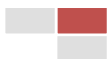
```
# zhimakaimen
AwAAAIznSJVboHUBQ2s=
Password:
Enter Debug Mode.
[1]+ Done /dav/initrun.78x60.sh
[root@Hik-DECODER-M ] # Niwd+7iH5HRe275GZU+7Qe/M5tb/M7KZAAOjrsa22LSZ0udjj2gBwrSc
SHCD/ZR82s+10P4FpzmVDBJpomDWEu+0=
-/bin/sh: Niwd+7iH5HRe275GZU+7Qe/M5tb/M7KZAAOjrsa22LSZ0udjj2gBwrScSHCD/ZR82s+10P4
[root@Hik-DECODER-M ] #
```

#### 4. Delete device's configuration parameters to default the device

1) For 6900UDI, the configuration parameters **devParam.db** and **devParamB.db** are in home/config, operations are as below:

```
[root@Hik-DECODER-M ] # cd home/config
[root@Hik-DECODER-M config] # rm -rf devParam.db
[root@Hik-DECODER-M config] # rm -rf devParamB.db
[root@Hik-DECODER-M config] # reboot
```

```
# zhimakaimen
AwAAAIznSJVboHUBQ2s=
Password:
Enter Debug Mode.
[1]+ Done /dav/initrun.78x60.sh
[root@Hik-DECODER-M ] # vsbUE7/sTTI9GDwwY6iP7j5GBj27scybxSHTK8P1H0D5DawJ6Mbiug
SMOxKPo8F9KIDNj3UQtK56QPP1sZrBA=
-/bin/sh: vsbUE7/sTTI9GDwwY6iP7j5GBj27scybxSHTK8P1H0D5DawJ6MbiugSMOxKPo8F9KIDNj3UQtK56QPP1sZrBA=: not found
[root@Hik-DECODER-M ] # ]
-/bin/sh: ]: not found
[root@Hik-DECODER-M ] #
[root@Hik-DECODER-M ] #
[root@Hik-DECODER-M ] #
[root@Hik-DECODER-M ] # cd home/config
[root@Hik-DECODER-M config] # ls
baseMap devParamB.db log lost+found
devParam.db ipc_decoder.db logo.bin sceneconfig
[root@Hik-DECODER-M config] # rm -rf devParam.db
[root@Hik-DECODER-M config] # rm -rf devParamB.db
[root@Hik-DECODER-M config] # ls
baseMap log lost+found
ipc_decoder.db logo.bin sceneconfig
[root@Hik-DECODER-M config] # reboot
The system is going down Now!
Sent SIGTERM to all processes
Terminated
Requesting system rebootig] #
```



Wait several minutes for the device to restart

- 2) For 6400HDI-T, **devParam.db** is in dav2 and **devParamB.db** is in log, operations are as below:

```
# cd dav2
# rm -rf devParam.db
# cd ../
# cd log
# rm -rf devParamB.db
# reboot

# zhimakaimen
AQAAAIznSI25joPq9Ds=
Password:
Enter Debug Mode.
# NafXmZd0Ddk6q4YugVEgr10cFcEMJ94Y4mHFkCbu142Z3Uvwo9HFwwePY3pv
TvIjqeCNafXmZd0Ddk6q4YugVEgr10cFcEMJ94Y4mHFkCbu142Z3Uvwo9HFwwe
-sh: NafXmZd0Ddk6q4YugVEgr10cFcEMJ94Y4mHFkCbu142Z3Uvwo9HFwwePY
3QfTvIjqeCNafXmZd0Ddk6q4YugVEgr10cFcEMJ94Y4mHFkCbu142Z3Uvwo9HFV
# ls
bin dav0 dav2 dev home log opt root srv tmp
dav dav1 dav4 etc lib mnt proc sbin sys var
# cd dav2
# ls
devParam.db lost+found
# rm -rf devParam.db
# ls
lost+found
# cd ../
# ls
bin dav0 dav2 dev home log opt root srv tmp
dav dav1 dav4 etc lib mnt proc sbin sys var
# cd log
# ls
LogFile000      LogFile004      LogFile008      ipc_decoder.db
LogFile001      LogFile005      LogFile009      logo.bin
LogFile002      LogFile006      LogFile010      lost+found
LogFile003      LogFile007      devParamB.db   sceneConfig
# rm -rf devParamB.db
# ls
LogFile000      LogFile004      LogFile008      logo.bin
LogFile001      LogFile005      LogFile009      lost+found
LogFile002      LogFile006      LogFile010      sceneConfig
LogFile003      LogFile007      ipc_decoder.db
# reboot
The system is going down NOW !!
```

Wait several minutes for the device to restart

SADP

Total number of online devices: **11** Export

ID	Device Type	Status	IPv4 Address	Port	Software Version	IPv4 Gateway	HTTP Port
001	DS-M7508HNI/GW	Active	10.5.2.251	8000	V4.1.1build160803	10.5.2.254	80
002	DS-6408HDI-T	Inactive	192.0.0.64	8000	V3.5.3 build 170...	192.0.0.1	80
003	DS-KB8112-IM	Active	10.5.2.56	8000	V1.4.5build 1702...	10.5.2.254	80
004	DS-6916UDI	Active	10.5.2.69	8000	V2.0.0 build 161...	10.5.2.254	80

- Note:
1. Use “cd filename” to enter certain file
  2. Use “cd ../” to return to previous directory
  3. Use “ls” to check the files in the directory

# First Choice for Security Professionals Hikvision Technical Support

