

Title:	How to control video wall by RS485	Version:	v1.0	Date:	07/08/2019
Product:	69 SERIES DECODER AND SERIAL KEYBOARD			Page:	1 of 15

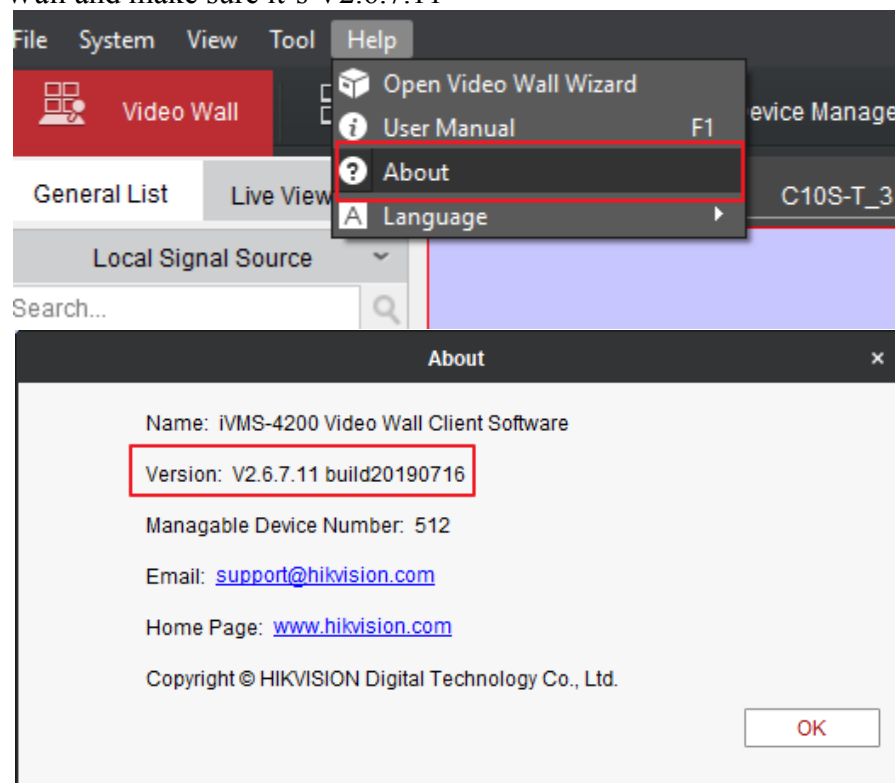
Preparation

1. 4200 Video Wall V2.6.7.11
2. Decoder V2.4.0

How to control video wall by RS485

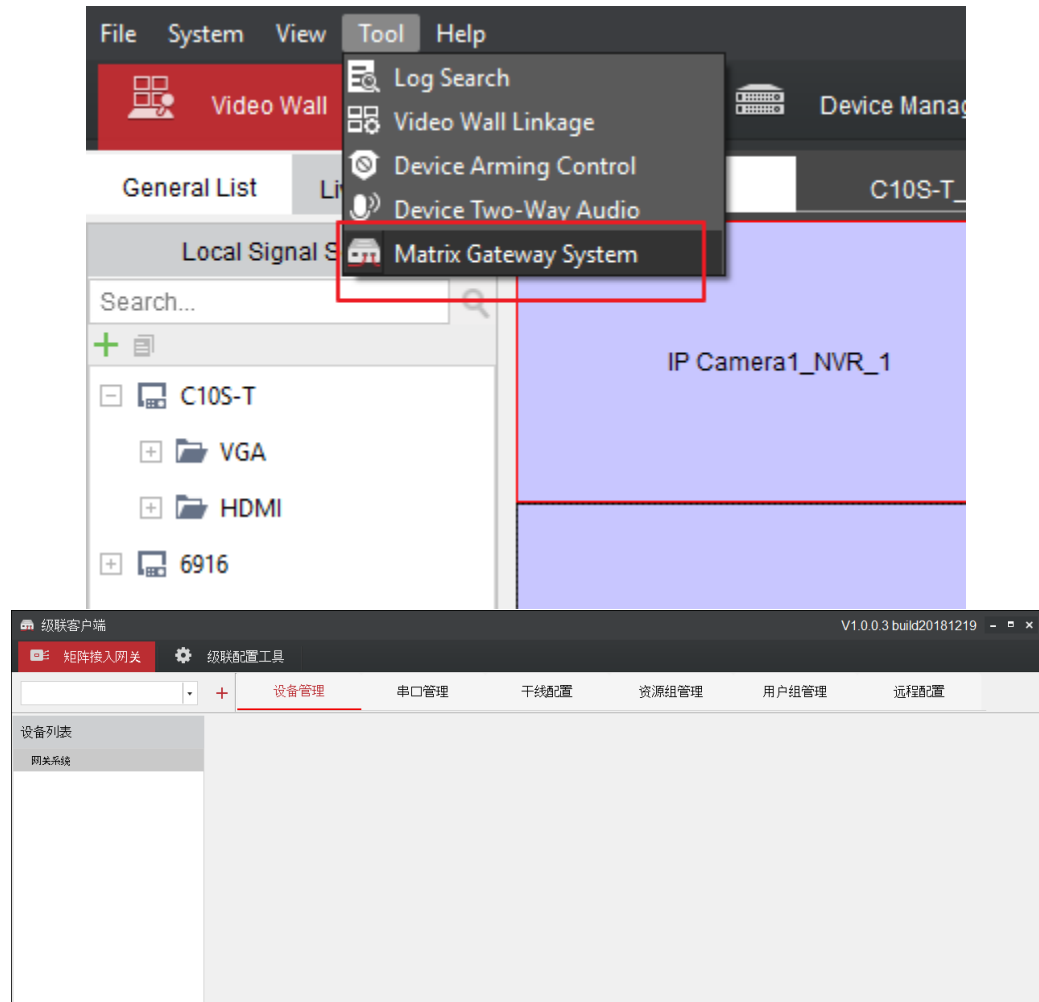
1. Open Matrix Gateway System

- 1) Run 4200 Video Wall and make sure it's V2.6.7.11



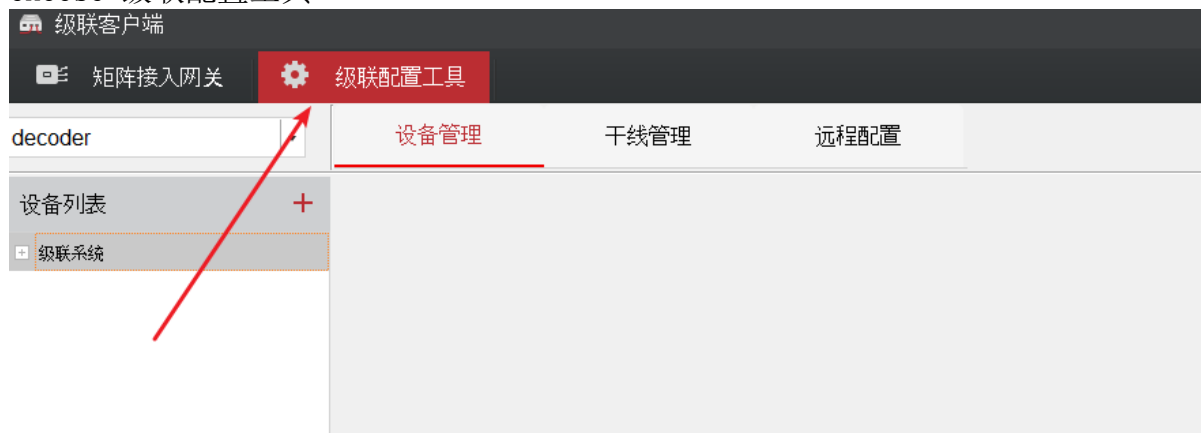
- 2) Choose Tool menu and choose Matrix Gateway System

Title:	How to control video wall by RS485	Version:	v1.0	Date:	07/08/2019
Product:	69 SERIES DECODER AND SERIAL KEYBOARD			Page:	2 of 15



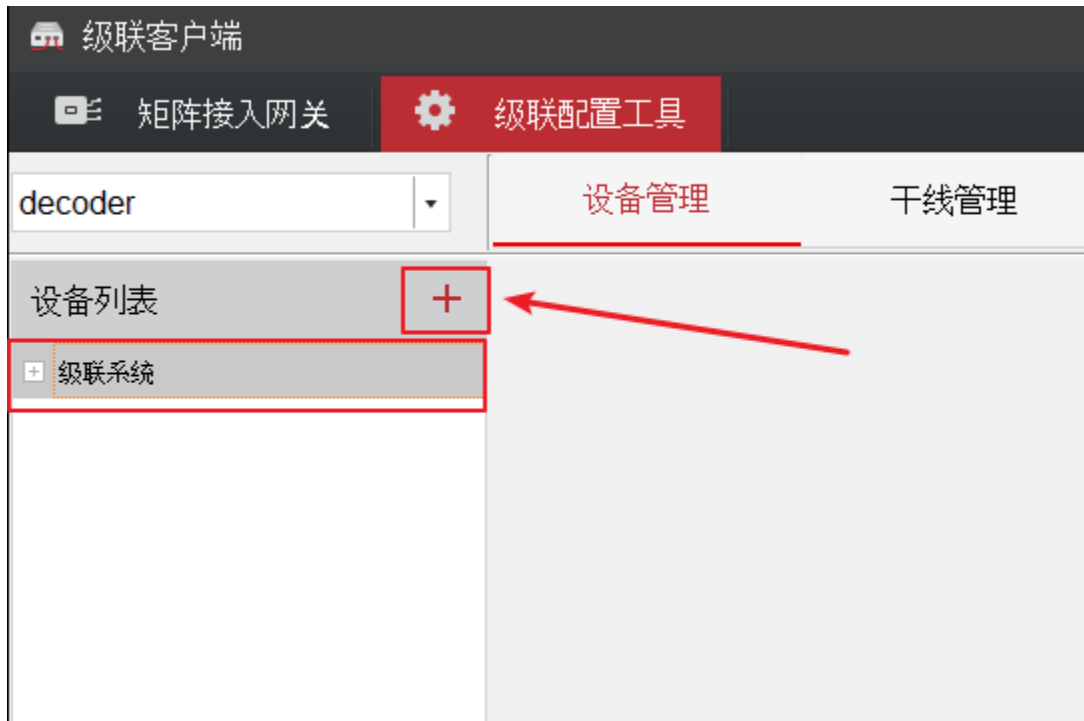
2. Set camera number

- 1) Choose 级联配置工具



- 2) Choose 级联系统 then click + button.

Title:	How to control video wall by RS485	Version:	v1.0	Date:	07/08/2019
Product:	69 SERIES DECODER AND SERIAL KEYBOARD			Page:	3 of 15



3) Input decoder information

The screenshot shows the '添加' (Add) dialog box. It has a title bar with '添加' and a close button. The dialog contains five input fields with labels in red and Chinese: 'device alias' (设备名称), 'IP address' (IP地址), 'port' (端口) with the value '8000', 'username' (用户名), and 'password' (密码). At the bottom right, there are two buttons: 'ADD' (添加) and 'Cancel' (取消).

4) Then choose the decoder you have added. Click + button.

Title:	How to control video wall by RS485	Version:	v1.0	Date:	07/08/2019
Product:	69 SERIES DECODER AND SERIAL KEYBOARD			Page:	4 of 15

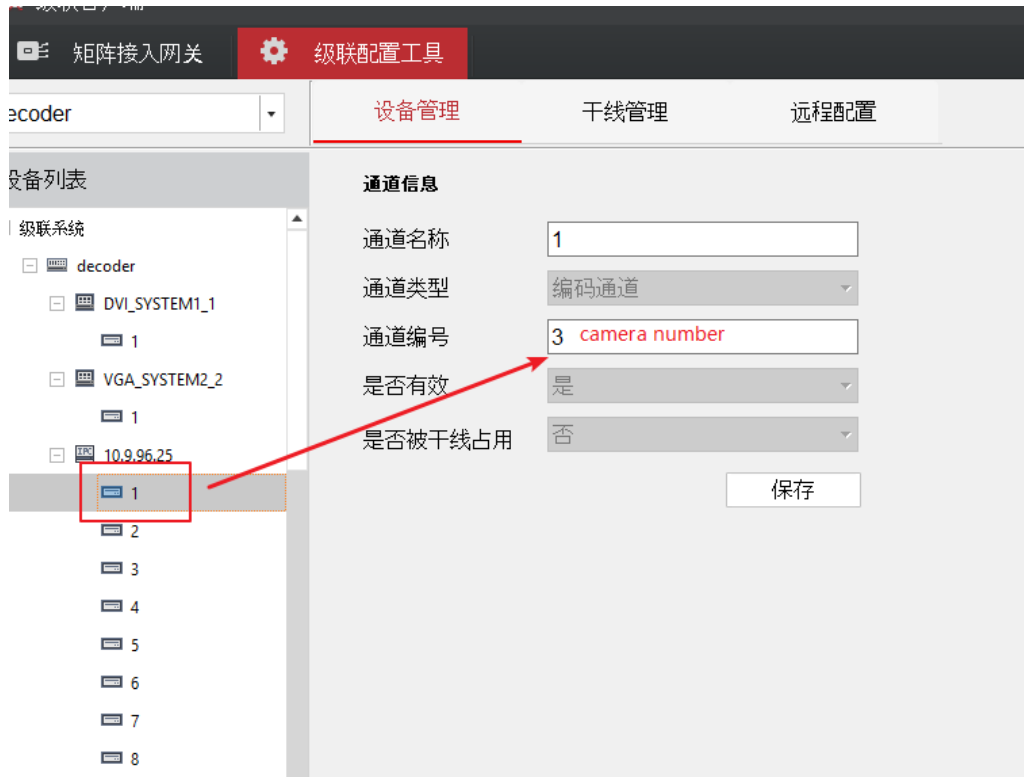


5) Input NVR or IPC information



6) Choose NVR or IPC you have added. Find out camera number.

Title:	How to control video wall by RS485	Version:	v1.0	Date:	07/08/2019
Product:	69 SERIES DECODER AND SERIAL KEYBOARD			Page:	5 of 15



7) Use keyboard to operate decoder. Please refer to 《How to control Video Wall by 1200&1006》



Title:	How to control video wall by RS485	Version:	v1.0	Date:	07/08/2019
Product:	69 SERIES DECODER AND SERIAL KEYBOARD			Page:	6 of 15

First Choice for Security Professionals
HIKVISION Technical Support