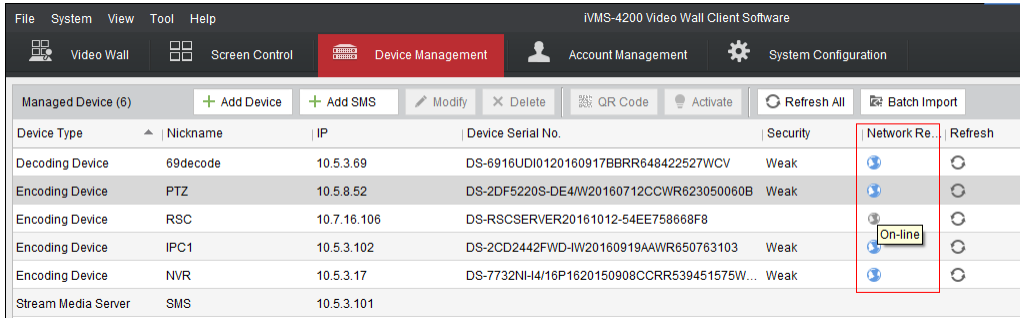
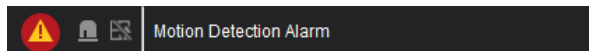


How to Display Video Triggered by Event on 69 Decoder

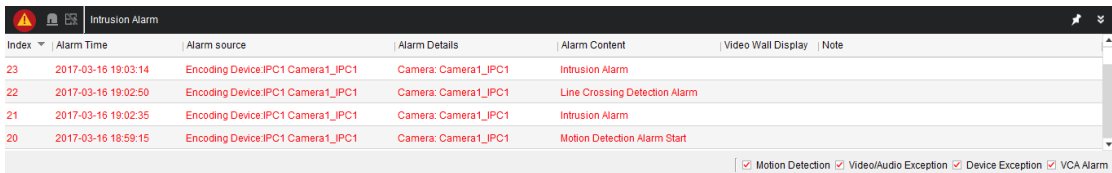
1. Adding encoding devices(IPC, NVR, DVR, etc) and decoder on 4200 video wall client



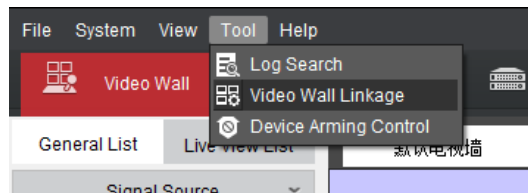
2. Configure corresponding smart event on encoding device, once configured successfully, you can see the alarm triggered on 4200



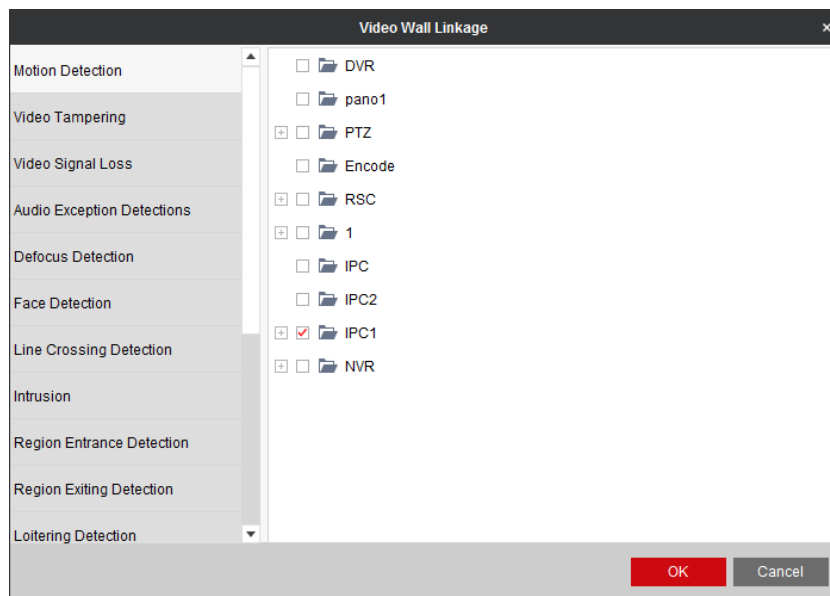
Click on lower right corner to display the alarm details



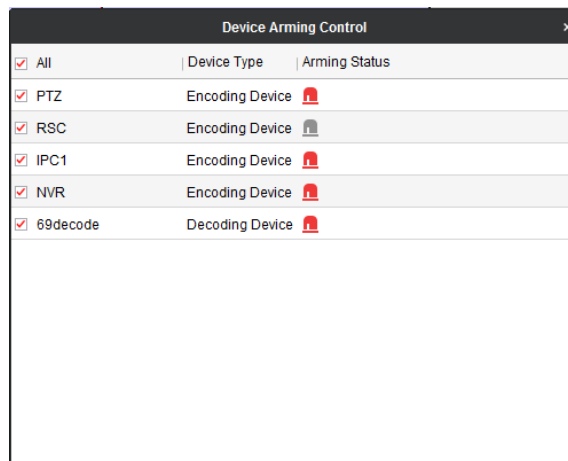
3. Click Tool -> Video Wall Linkage to link the encoding device with corresponding events



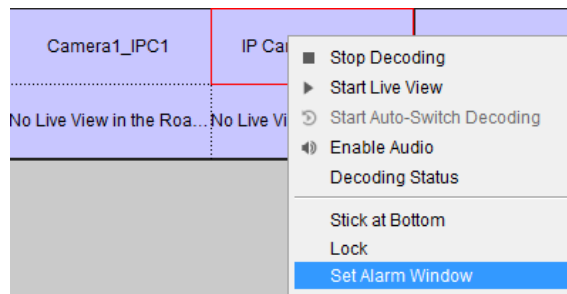
E.g. link motion detection of IPC1 with the video wall, click OK (More than one event and one camera can be linked)



- Click Tool -> Device Arming Control, link all the devices in the list



- Click on lower left corner to start video wall linkage, make sure the icon's status is
- Right click on the window, choose Set Alarm Window, and a icon will show up on the corresponding window



Note: only one alarm window can be set on the video wall



- Trigger the alarm again, you will see a icon in the alarming status and the linked camera will show up on the alarm window successfully

Index	Alarm Time	Alarm source	Alarm Details	Alarm Content	Video Wall Display	Note
4	2017-03-16 19:21:40	Encoding Device:IPC1 Camera1_IPC1	Camera: Camera1_IPC1	Line Crossing Detection Alarm		
3	2017-03-16 19:21:06	Encoding Device:IPC1 Camera1_IPC1	Camera: Camera1_IPC1	Line Crossing Detection Alarm		
2	2017-03-16 19:20:56	Encoding Device:IPC1 Camera1_IPC1	Camera: Camera1_IPC1	Motion Detection Alarm Start		
1	2017-03-16 19:16:41	Encoding Device:IPC1 Camera1_IPC1	Camera: Camera1_IPC1	Motion Detection Alarm Stop		

Motion Detection Video/A