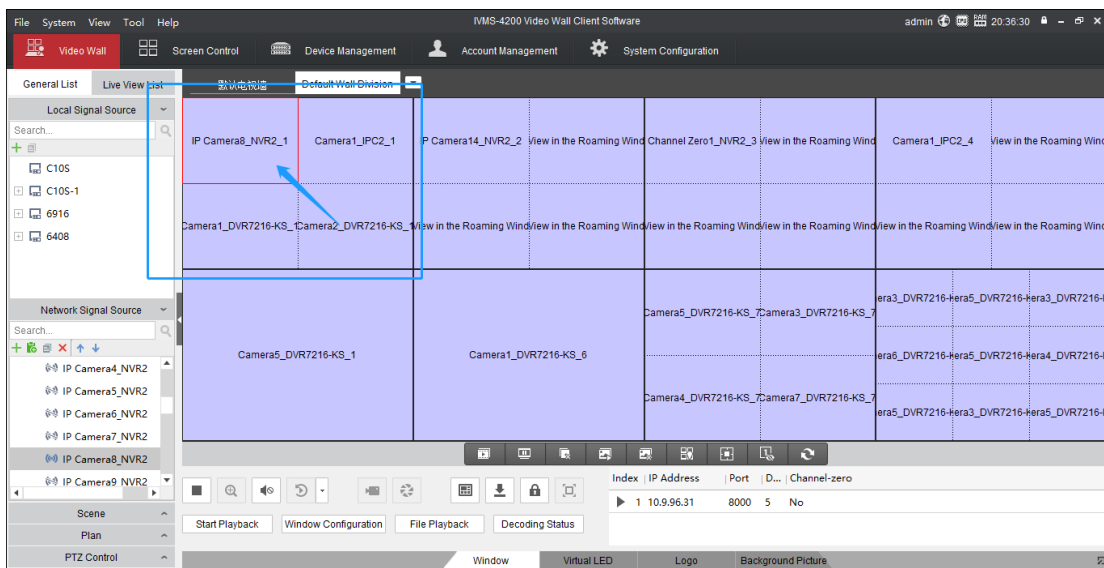


## 4200 auto-switch decoding and split screen

### Split screen

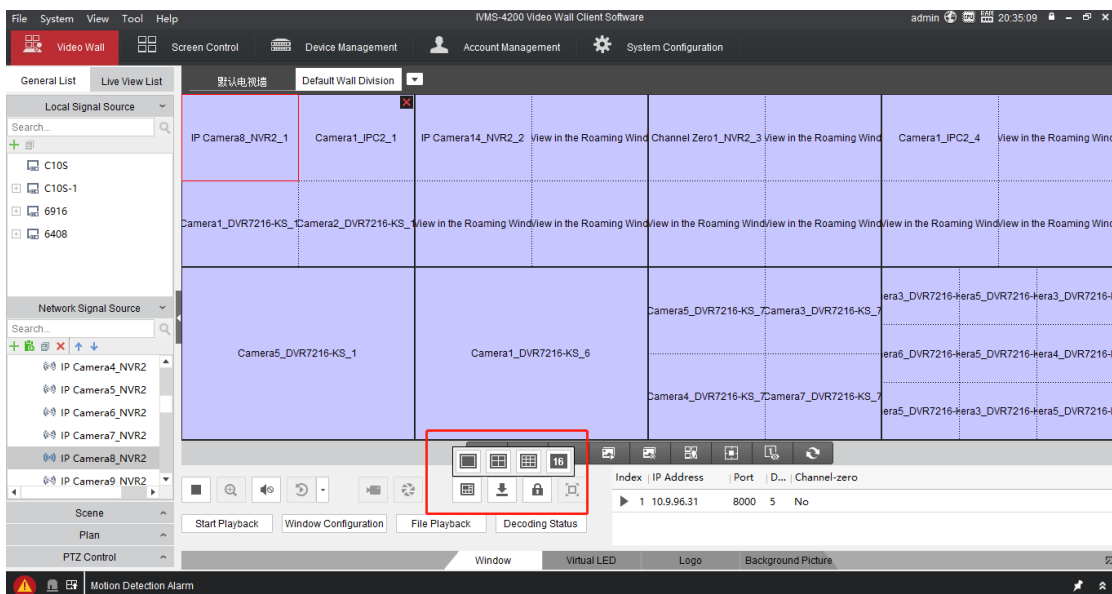
Step 1: Choose the monitor you want to make split. When you have chosen the monitor, you can see a red border in the monitor. As follow in the figure 1-1.



1-1

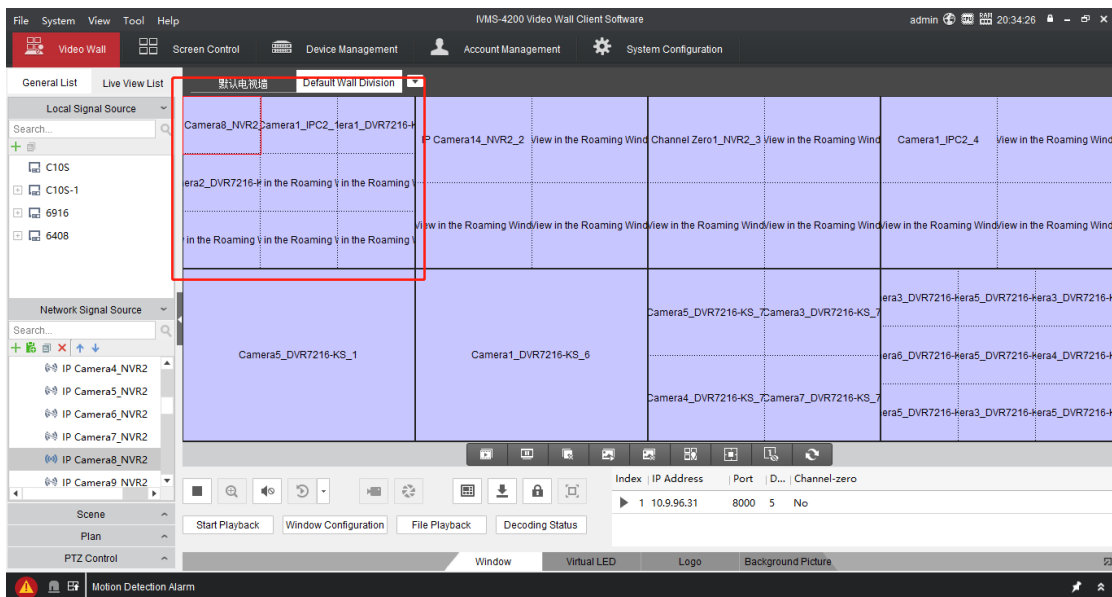
Step 2: Click the button in window option. You can see many patterns for split screen.

As follow in the figure 1-2.




1-2

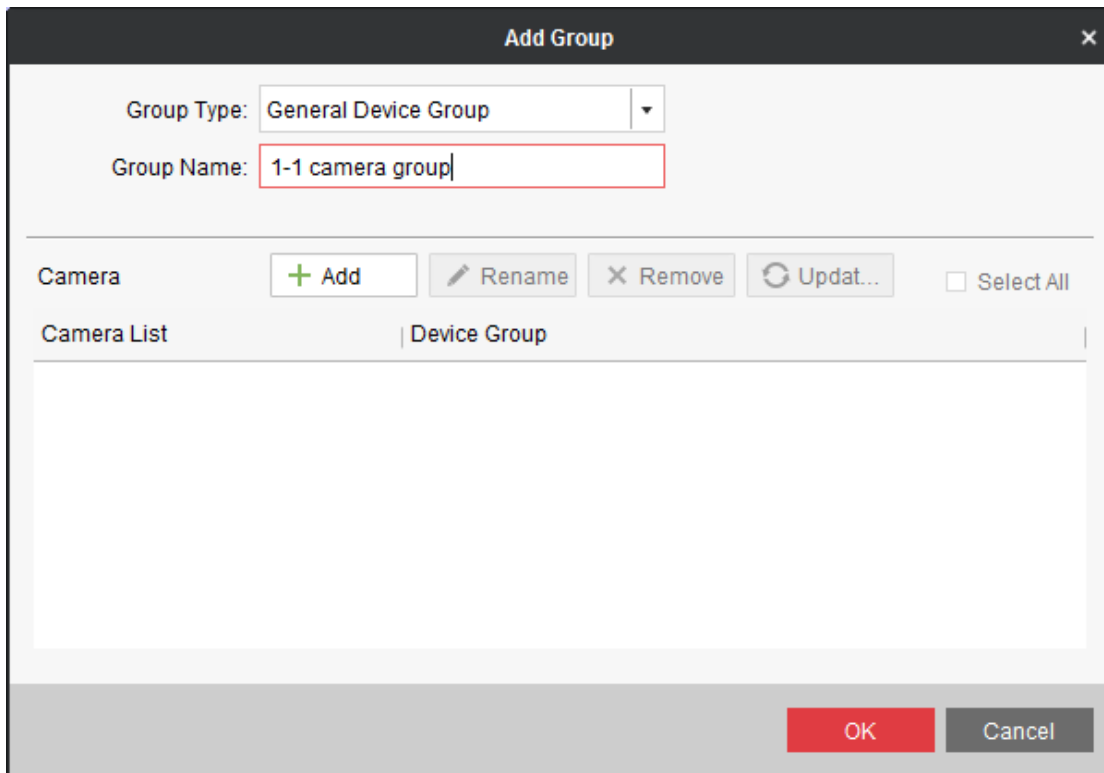
Step 3: Choose the split pattern, you can find the monitor has been split. As follow in the figure 1-3.




1-3

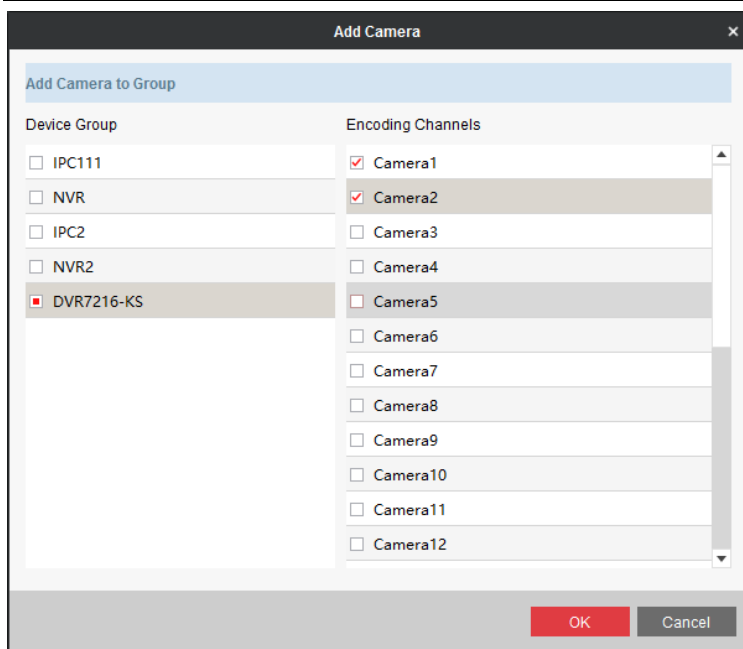
## auto-switch decoding

Step 1: Click the  button to create a camera group then add the camera you want to let them auto-switch decode in one channel. As follow in the figure 2-1.



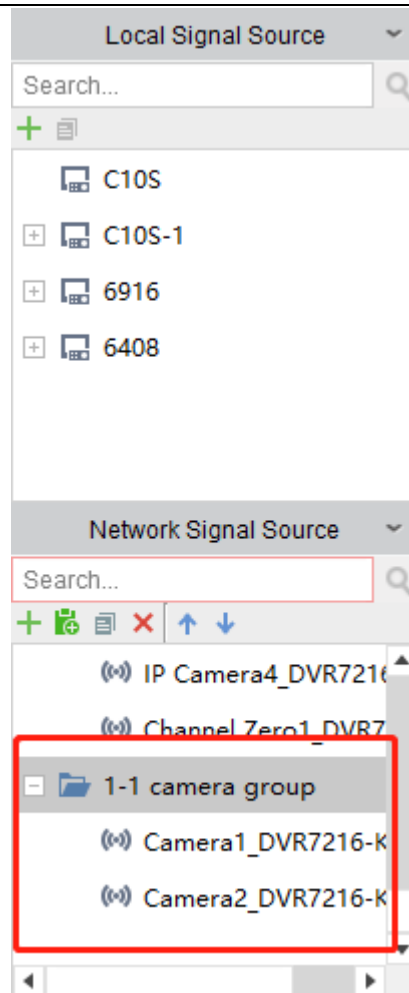
2-1

Step 2: Click  button to add camera to your group. As follow in the figure 2-2.




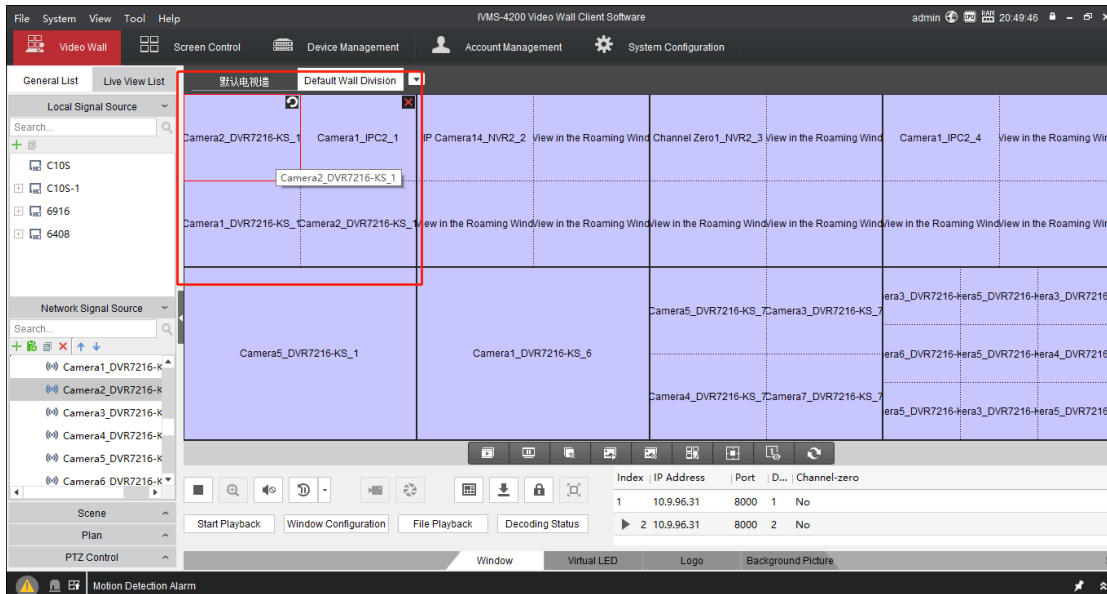
2-2

Step 3: After you created the group, you can find them in left side. As follow in the figure 2-3.




2-3

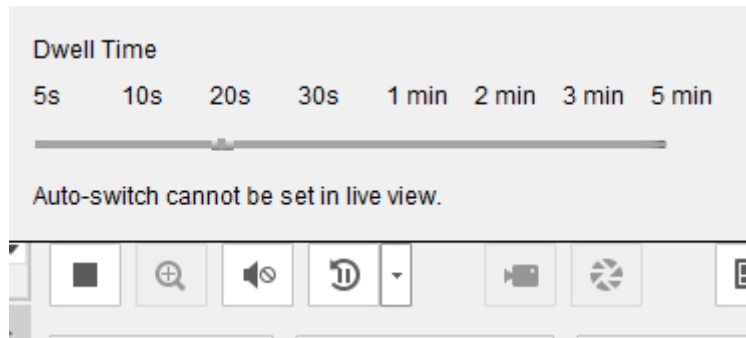
Step 4: Drag a camera which is in your camera group to the video wall position where you want to let them display. Then you drag the group to the same position, you can find  logo on the right top. It means this channel has been auto-switch decoding. As follow in the figure 2-4.



2-4

Step 5: Choose the time between auto-switch decoding, you can click  button.

And you can click  button to start or stop auto-switch decoding. As follow in the figure 2-5.



2-5

**HIKVISION**

First Choice for Security Professionals

---

First Choice for Security Professionals